

# HEALTH INNOVATION COMMUNITY PARTNERSHIP

Monthly Meeting  
September 10, 2021

Reunión mensual  
10 de septiembre  
de 2021



# Tech Tips for Zoom Meetings

## Consejos técnicos para reuniones de Zoom

- All attendees – please mute yourself unless you are speaking!

*If there is too much background noise, the moderator will mute your line automatically.*

- See your control panel at the bottom of your screen. You can turn your audio and video on or off by clicking the **microphone** or **camera**.

- A Todos los Participantes –por favor silencie su micrófono al menos que esté hablando.

*Si hay mucho ruido de fondo, la moderadora lo silenciará automáticamente.*

- Mire el panel de control en la parte inferior de su pantalla. Puede prender o apagar su audio y video presionando el micrófono o la cámara.



Mute



Stop Video



Invite



Participants



Share



Chat



Record



Interpretation



More

End Meeting

# Tech Tips for Zoom Meetings

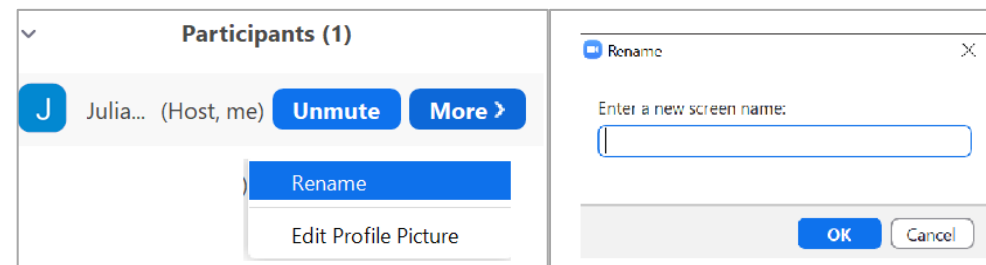
## Consejos técnicos para reuniones de Zoom

- **Participants** shows a list of who is in the meeting.
  - Rename yourself: Look for your name>More>Rename>Ok
  - Click the “Raise Hand” button if you want to ask a question



Raise Hand

- **Chat** opens up a shared window where you can type comments or questions to be read by the moderator.
- **Interpretation** allows you to attend in your language of choice.

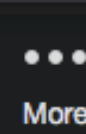
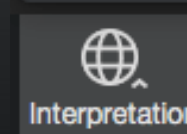
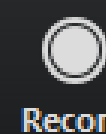
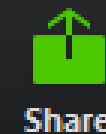
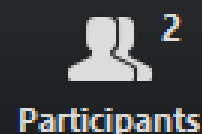
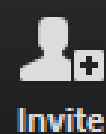
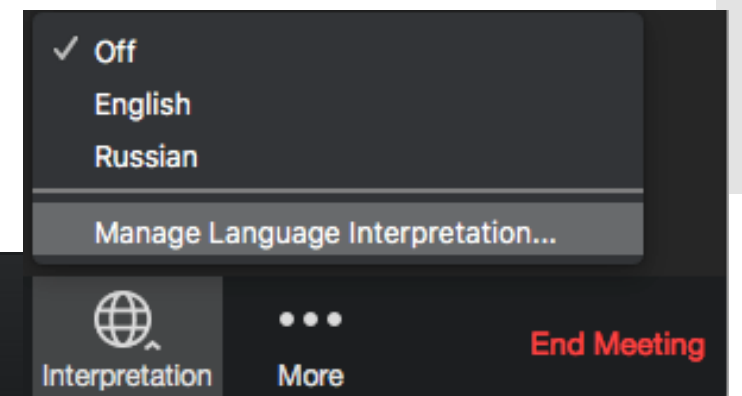


- **Participants** muestra la lista de quiénes están en la reunión.
  - Cambie su nombre: Busque su nombre>More>Rename>Ok
  - Presione el botón “Raise Hand” para hacer preguntas



Raise Hand

- **Chat** abre una ventana compartida donde puede escribir comentarios o preguntas que serán leídas por la moderadora.
- **Interpretation** permite escuchar la reunión en su lenguaje de preferencia.



End Meeting

## Q&A

# Preguntas y respuestas

- We will try to allow for as many questions as possible, but with a very full agenda, we may not be able to answer all questions live.
  - To ask a question – please “Raise a Hand” or type your question into Chat.
  - You can also use Chat for any comments or feedback for the session.
  - The moderator will ask for any questions from those on the phone during the Q&A period.
- Trataremos de permitir la mayor cantidad de preguntas posibles pero, como la agenda es muy extensa, es posible que no contestemos todas las preguntas en vivo.
  - Para hacer preguntas- por favor “Levante la Mano” o escriba su pregunta en el Chat.
  - También puede usar el Chat para comentarios o devoluciones de la sesión.
  - La moderadora tomará preguntas de quienes estén en el teléfono durante el período de Preguntas y Respuestas.

# HICP Guiding Principles

(from our Vision  
and Mission  
document)

1. All participants agree to basic principles prioritizing equity, community resilience, and health in all programs and projects.
2. All participants agree to approach issues with an open mind, be willing to engage in dialogue, and commit to thinking boldly about solutions.
3. Participants will state views and ask genuine questions.
4. Participants will seek to avoid monologues and arguments; move to conversations where participants are curious and seek to understand various points of view.
5. Participants will explain reasoning and intent; share how we reach our conclusions so that others can understand our divergent reasoning.
6. Participants will attack the problem and not the person, organization, or institution.
7. Participants will define key terms so that we can attain a shared understanding.
8. Participants will share all relevant information.
9. Participants will always arrive prepared for the meeting.
10. During meetings, only one person speaks at a time; we will not engage in sidebar conversations.
11. Participants will work to develop a comprehensive, common set of information with which to solve problems and make decisions.
12. Participants will jointly design next steps.

# Agenda

8:45	<b>Welcome, Meeting Overview and Guiding Principles</b>	<b>Bienvenida, resumen de la junta y principios rectores</b>
8:50	<b>LAC+USC Medical Center Update</b>	<b>Actualización del Centro Médico LAC + USC</b>
9:10	<b>Housing Update</b>	<b>Actualización de vivienda</b>
9:40	<b>Policy Initiatives Update</b>	<b>Actualización de iniciativas de política</b>
10:30	<b>Partner Announcements</b>	<b>Anuncios de socios</b>

LAC+USC

LAC+USC Medical Center  
Update

**Actualizaciones del Centro Medico de  
LAC+ USC**

*Edgar Solis, Chief Operating Officer / Director de  
operaciones*

Housing

Vivienda

LA County Housing Element

**Elemento de vivienda del condado de  
Los Ángeles**

*Elsa Rodriguez and Tina Fung*

*Los Angeles County Department of Regional Planning*

*Departamento de Planificación Regional del Condado de  
Los Ángeles*



**Los Angeles County**  
**Housing Element Update:**  
**Actualización del Capítulo de Vivienda**  
**Condado de Los Ángeles: Versión Preliminar del**  
**Programa de Rezonificación**

---

**Health Innovation Community Partnership**  
**September 10, 2021**



# Housing Element

- Required element of the General Plan
- Demonstrate capacity to meet Regional Housing Need Allocation
- Must be updated periodically
- Planning Cycle: 2021-2029

RHNA 2021-2029	Affordability				Total
	Very Low (<50% AMI*)	Lower (50 - 80% AMI*)	Moderate (80 - 120% AMI*)	Above Moderate (>120% AMI*)	
	25,648	13,691	14,180	36,533	90,052

\*AMI = Area Median Income

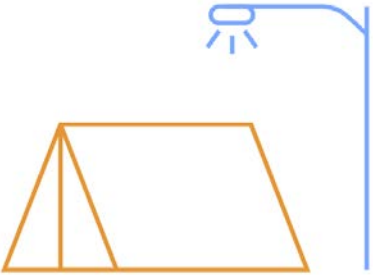


# Needs Assessment

- Demographic trends



- 55% of renter households are cost burdened



- In 2020, 6,088 people experiencing homelessness

- Housing trends

- 76% Single-family
- 90% of the housing stock is at least 30 years old



- 20% of households are overcrowded



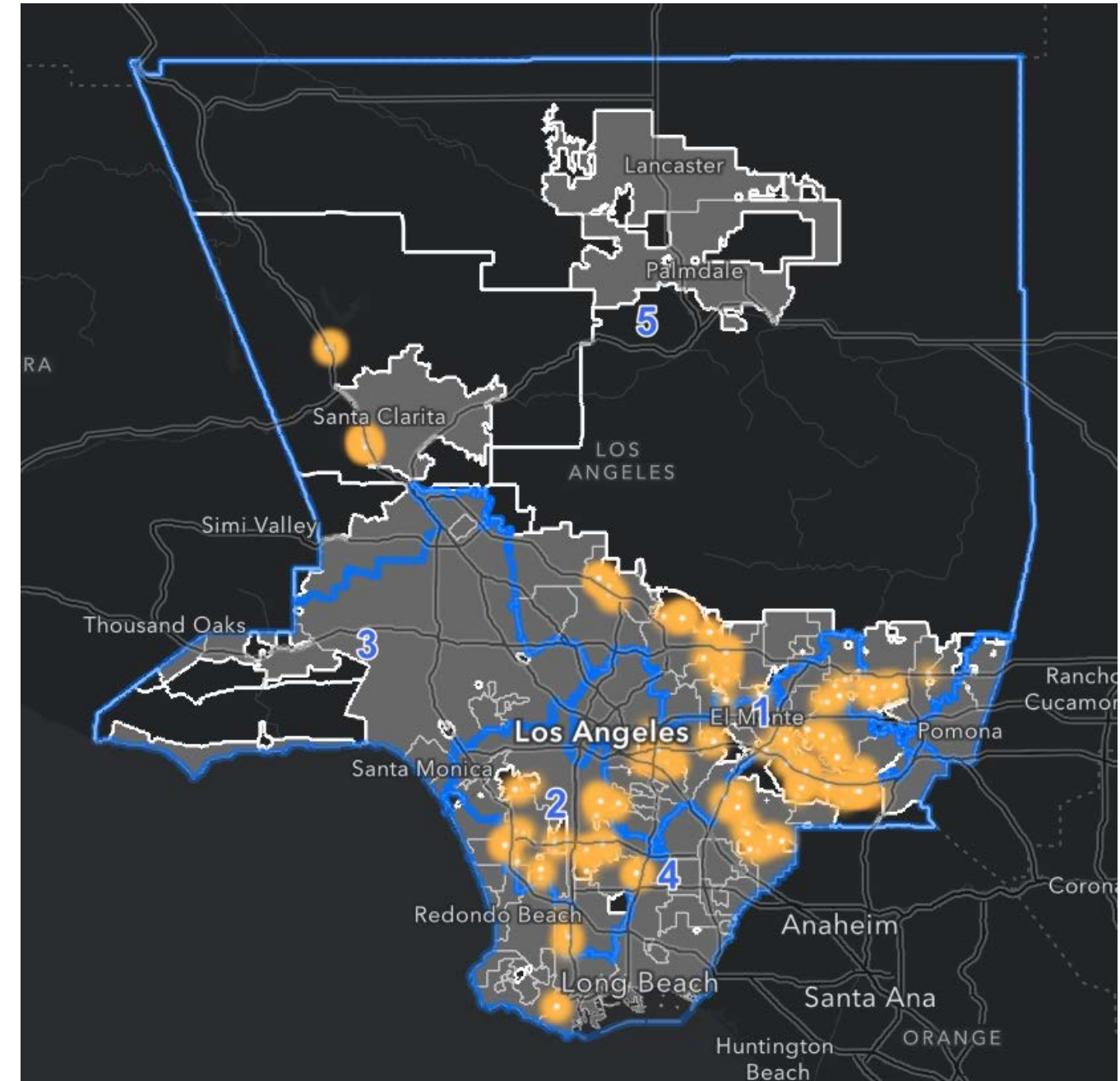
- 13% of households identify as Seniors



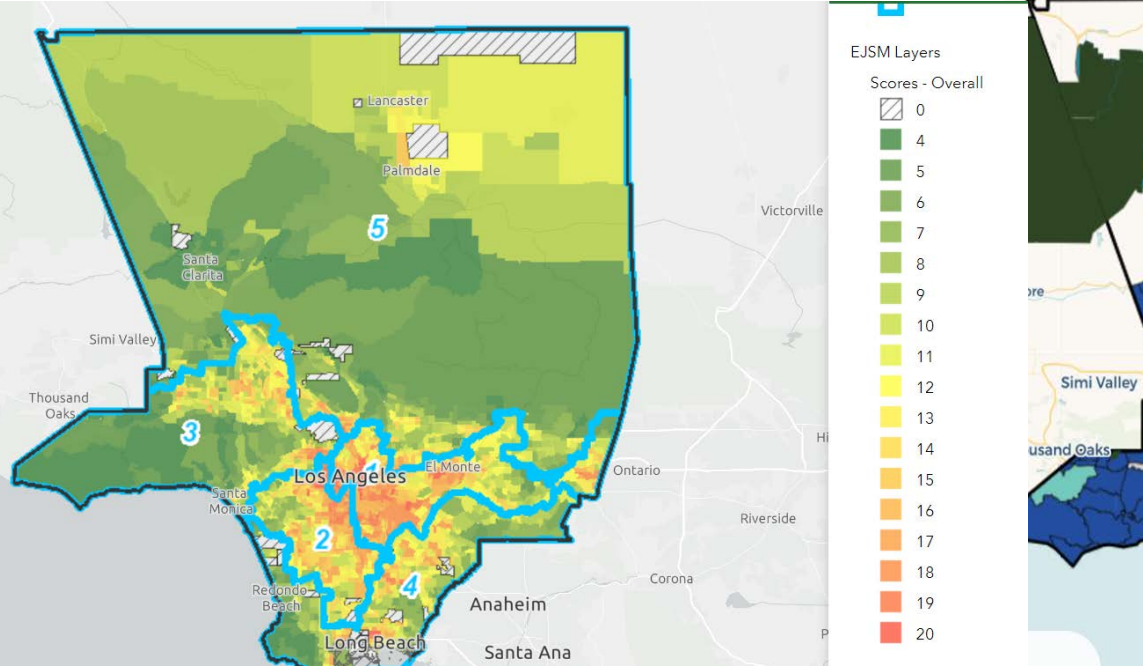
# Housing Element – Sites Inventory and Rezoning

## Sites Inventory/Inventario de Sitios

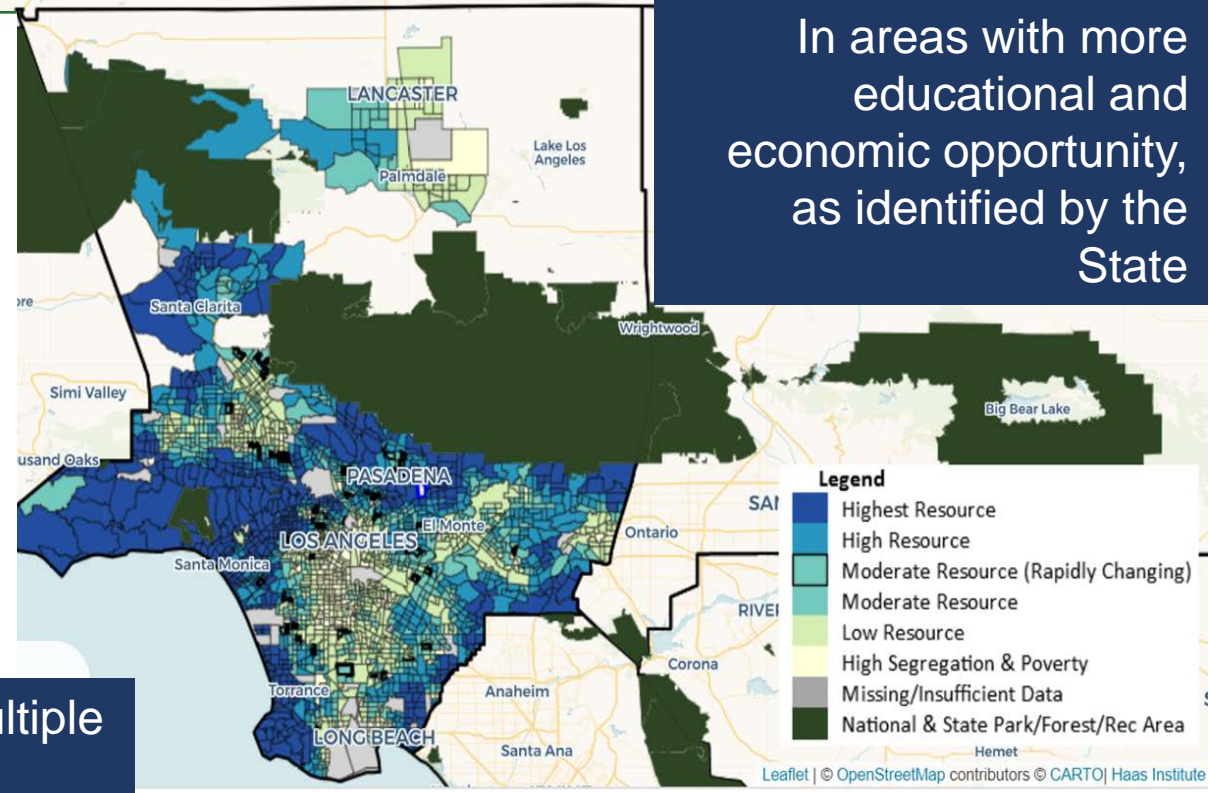
- There are not enough sites to accommodate the 90,000 units.
- No hay suficientes sitios para las 90.000 unidades de vivienda.
- Rezoning will ensure that there are enough sites with adequate densities so that the 90,000 homes could be built in the upcoming 8 years.
- La rezonificación asegura que haya suficientes sitios con densidades adecuadas para que se puedan construir las viviendas en los próximos ocho años.



# Rezone Criteria - Where should multi-family housing be built?



In areas less burdened by and vulnerable to multiple types of pollution and health risks



In areas with more educational and economic opportunity, as identified by the State



Outside of environmentally sensitive or naturally constrained areas

How likely is a site to be suitable for housing development?

¿Qué posibilidad hay de que un sitio esté adecuado para la construcción de viviendas?



# Rezoning Program

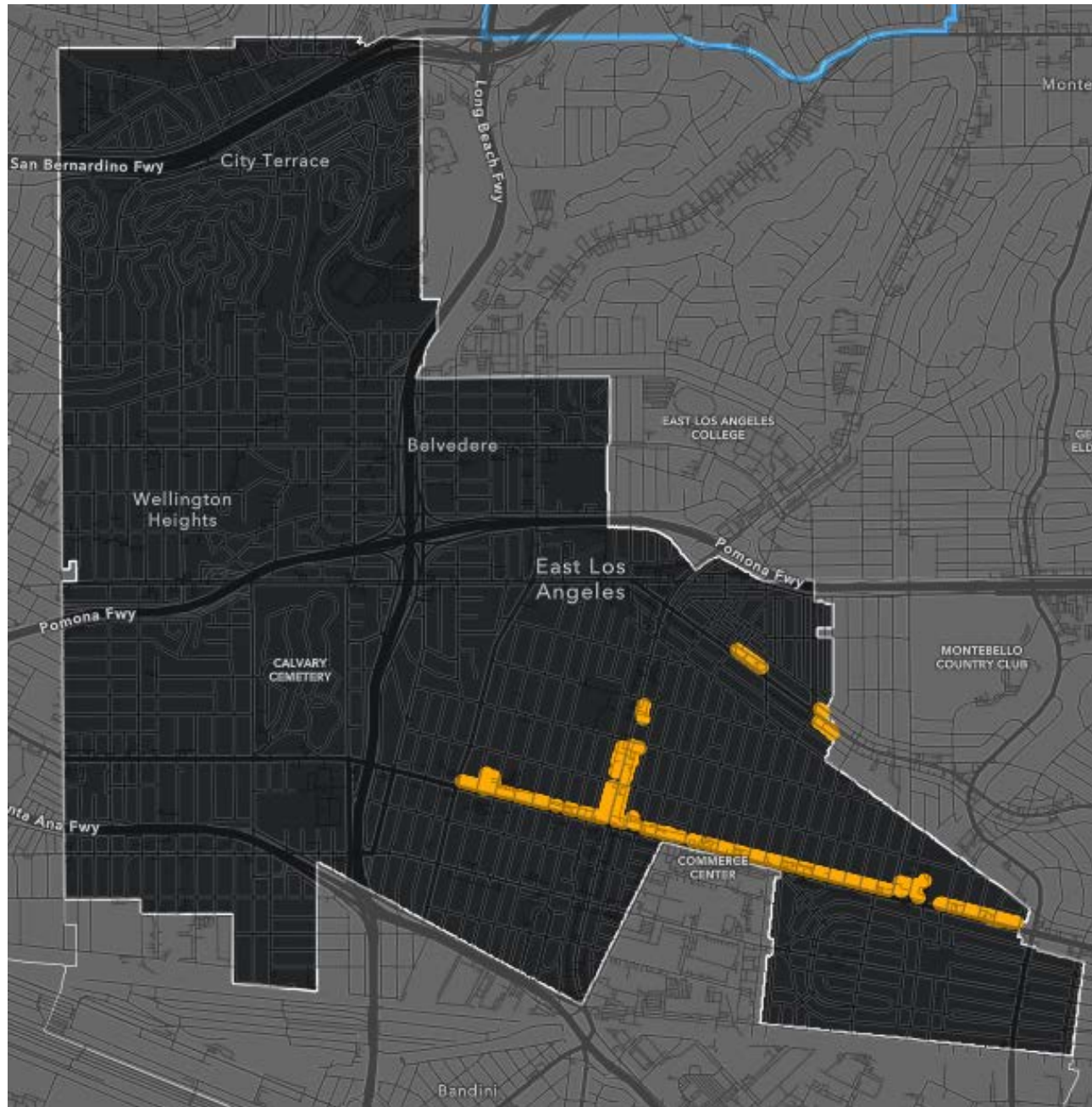
---

- **Does NOT** actually rezone properties, only demonstrates capacity.  
Rezoning will occur in future planning efforts by 2024
- **Does NOT** require any property owner to do anything or build anything
- **Does NOT** require the County to build anything



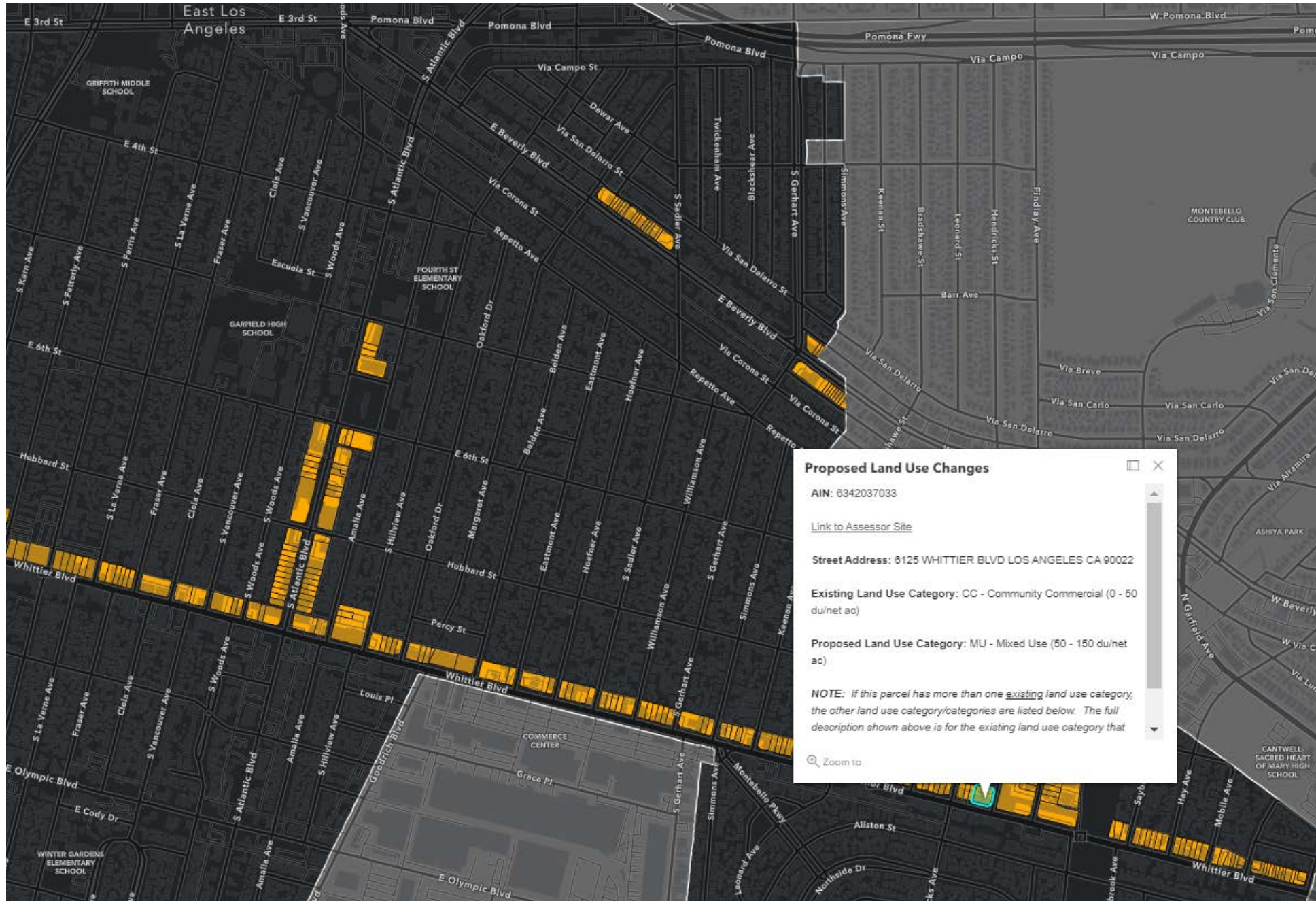
# Interactive map/ Mapa interactivo

[Housing Element Update - Draft Rezoning Program \(arcgis.com\)](https://arcgis.com)



Proposed Zone Changes along Whittier Blvd, Atlantic Blvd and Beverly Blvd

# Interactive map/ Mapa interactivo



● MU - Mixed Use





# How to participate/Como participar

Milestone	Date
Board of Supervisors Hearing	October 19, 2021
Board of Supervisors Adoption	November 30, 2021
HCD Certification	December 2021 – March 2022

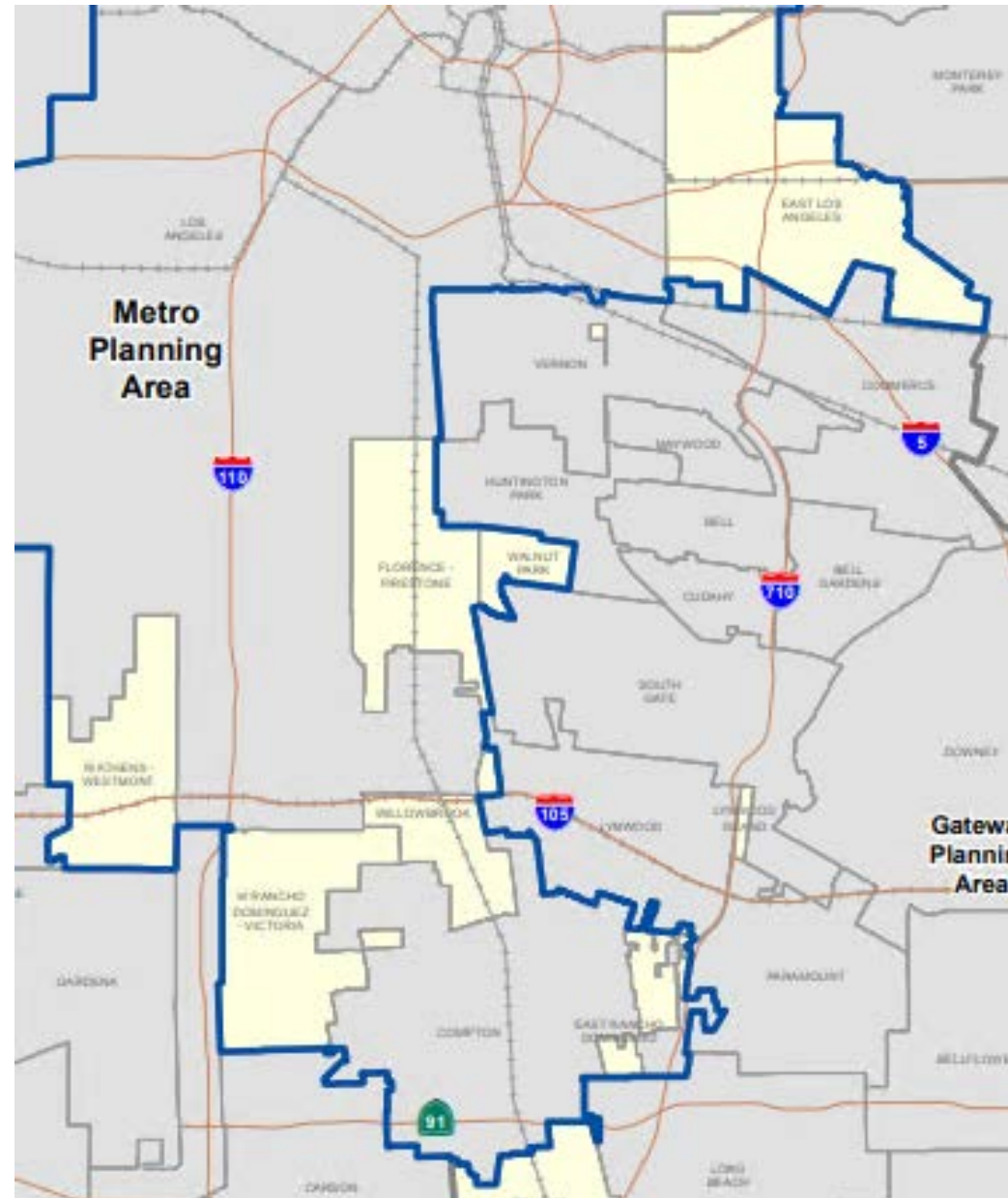
Email us at/[envíenos un correo electrónico a housing@planning.lacounty.gov](mailto:housing@planning.lacounty.gov)

Stay informed by visiting our Housing Element webpage at/[Manténgase informado visitando nuestra página en http://planning.lacounty.gov/housing/](http://planning.lacounty.gov/housing/)

Call us/llámenos: (213) 974-6417/(213) 974-6427 (español)



# Introducing – Metro Area Plan 2023



- Includes seven communities;
- 21.34 square miles and 313,764 people;
- Community-specific economic development strategies through incentives or land use policy changes (e.g., value capture) as well as redevelopment or tenanting strategies;
- Mobility Element- coordinate land use and transportation, promote active transportation, reduce vehicle miles traveled and improve air quality in the County's most disadvantaged communities;
- A gentrification and displacement study

Questions?

¿Preguntas?

Housing

Vivienda

Permanent Supportive Housing

**Vivienda de apoyo permanente**

*Susana Oliveras*

*Los Angeles County Development Authority*

*Autoridad de Desarrollo del Condado de Los Ángeles*

Policy

Política

## LA County Policy Update

# Actualización de la política del condado de Los Ángeles

*Anthony Cespedes and Guadalupe Duran-Medina,  
Office of Supervisor Hilda L. Solis*

*Rosa Soto, LAC+USC Medical Center Foundation, Inc.*

---

## Reparations for Forced Sterilizations at LAC+USC

- Motion by Supervisor Hilda L. Solis
- Approved by BOS on July 13, 2021
- Motion includes direction to:
  - Send a letter to the Governor, the California Senate President, and the Speaker of the California State Assembly advocating for reparations for the survivors at LAC+USC in the FY22-23 budget.
  - Determine the feasibility to identify the patients impacted by the coerced sterilization at LAC+USC Medical Center between the years of 1968 and 1974 and validate said individuals
  - Explore the feasibility of utilizing existing DHS funding sources to provide appropriate reparations to the survivors in the event the State does not provide the additional compensation
  - Engage with community regarding appropriate reparations and methods of validation



Partner  
Announcements  
Anuncios de socios

# Meeting Feedback Poll

## Encuesta de reunión



Next Meeting:  
Friday, October 1, 2021

Próxima reunión: viernes  
1 de octubre de 2021

[www.hicpla.org](http://www.hicpla.org)

**H**HEALTH  
**I**INNOVATION  
**C**COMMUNITY  
**P**PARTNERSHIP