

HEALTH INNOVATION COMMUNITY PARTNERSHIP

Monthly Meeting
June 4, 2021

Reunión mensual
4 de junio
de 2021



HICP Guiding Principles

(from our Vision
and Mission
document)

1. All participants agree to basic principles prioritizing equity, community resilience, and health in all programs and projects.
2. All participants agree to approach issues with an open mind, be willing to engage in dialogue, and commit to thinking boldly about solutions.
3. Participants will state views and ask genuine questions.
4. Participants will seek to avoid monologues and arguments; move to conversations where participants are curious and seek to understand various points of view.
5. Participants will explain reasoning and intent; share how we reach our conclusions so that others can understand our divergent reasoning.
6. Participants will attack the problem and not the person, organization, or institution.
7. Participants will define key terms so that we can attain a shared understanding.
8. Participants will share all relevant information.
9. Participants will always arrive prepared for the meeting.
10. During meetings, only one person speaks at a time; we will not engage in sidebar conversations.
11. Participants will work to develop a comprehensive, common set of information with which to solve problems and make decisions.
12. Participants will jointly design next steps.

Agenda

8:45	Welcome, Meeting Overview and Guiding Principles	Bienvenida, resumen de la junta y principios rectores
8:50	LAC+USC Medical Center Update	Actualización del Centro Médico LAC + USC
9:10	USC Special Projects Update	Actualización de proyectos especiales de la USC
9:30	Rental Assistance Programs Update	Actualización de los programas de asistencia para el alquiler
9:50	Youth Experience Under COVID	Experiencia de los jóvenes durante el COVID
10:30	Partner Updates	Actualizaciones de socios

COVID-19

LAC+USC Medical Center
Update

**Actualizaciones del Centro Medico de
LAC+ USC**

*Edgar Solis, Chief Operating Officer / Director de
operaciones*

USC Special Projects Update

Actualización de proyectos especiales de la USC

David Galaviz, Community & Local Government Partnerships

Kate Weber, USC Public Exchange

Professor Esther Margulies, Graduate Program in Landscape Architecture + Urbanism

Urban Trees Initiative

A Scientific Plan for a Healthier, More Resilient
Eastside L.A.

Coordinated by  PUBLIC EXCHANGE

USCDornsife
Spatial Sciences Institute

USCSchool
of Architecture

 **CARBON CENSUS**
at USC



Urban Trees Initiative Team

Spatial Sciences Institute,
Landscape Architecture
and Urbanism, Carbon
Census



John Wilson

USC Spatial Sciences
Institute



Esther Margulies

USC School of
Architecture



Will Berelson

USC Earth Sciences



Beau
MacDonald

USC Spatial
Sciences
Institute



Seher
Randhawa

USC Spatial
Sciences
Institute



Erik Huisman

USC Spatial Sciences
Institute



Rachel Ablondi

USC Spatial Sciences
Institute



Jackson
FitzGerald

USC Spatial
Sciences
Institute

University



David
Galaviz

USC University
Relations



Dulce Acosta

USC University
Relations



Melinda Ramos-Alatorre

USC
University
Relations



Coleman
Reardon

USC University
Relations

Public Exchange



Kate vweber

USC Dornsife
Public Exchange



Marianna
Babboni

USC
Dornsife Public
Exchange

City of Los Angeles



Rachel
Malarich

L.A. Department
of Public
Works



Melinda
Gejer

L.A. Department
of Public
Works

Project Goals

- Help the City of LA plan urban forestry efforts in part of the Eastside of Los Angeles
- Determine **where, how many, and what types** of new trees can be added in the study site
- Use USC air quality sensors to test which tree species are most effective in absorbing pollutants
- Share our research and data with our Eastside neighbors

Timeline

August 2020 – April 2021

Project Outcomes

A baseline
assessment

A selection of 5 candidate sites
and greening scenarios

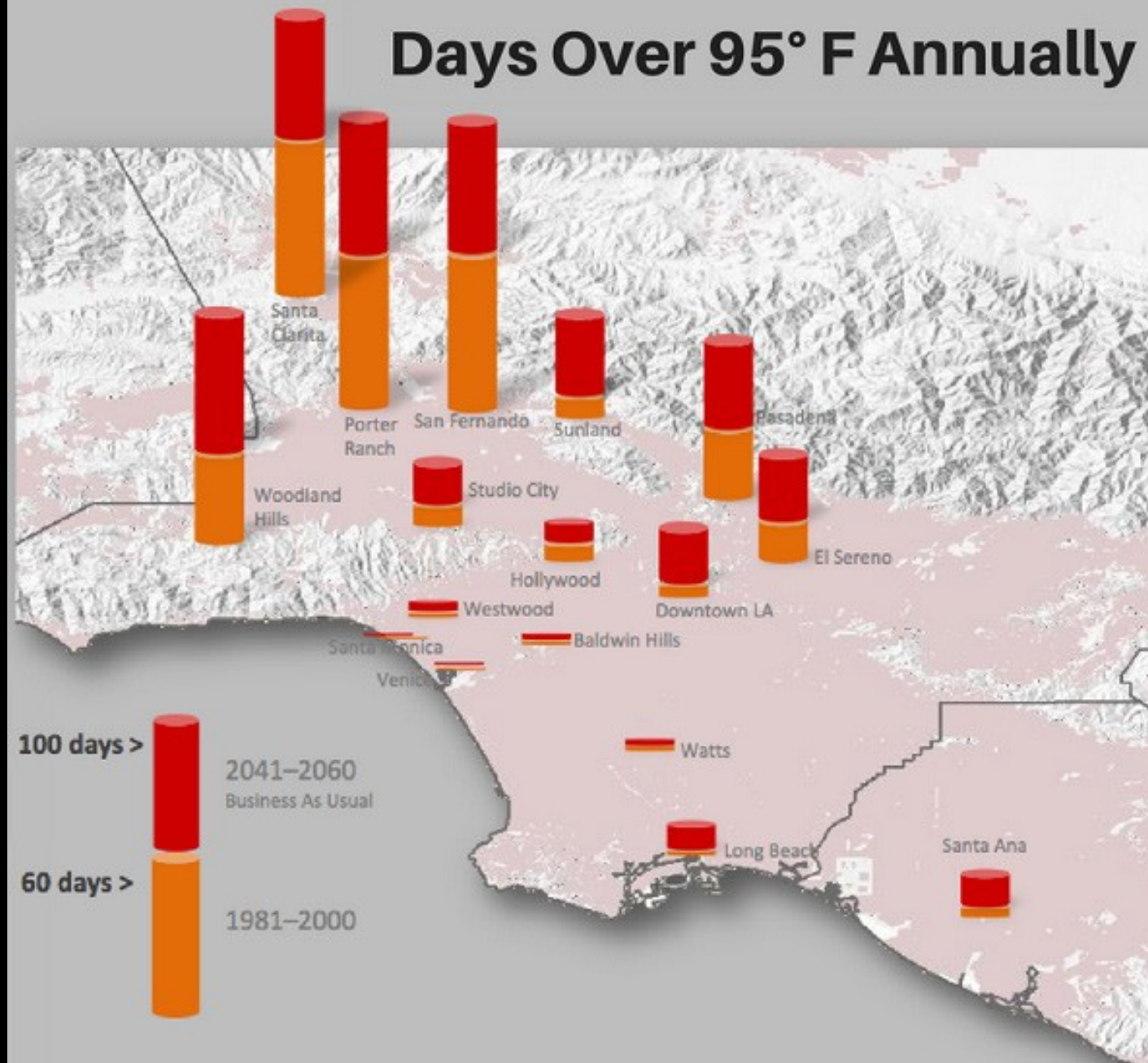
A preliminary scientific analysis of
which tree species remove
particulate matter

Input from community
organizations and leaders in the
area

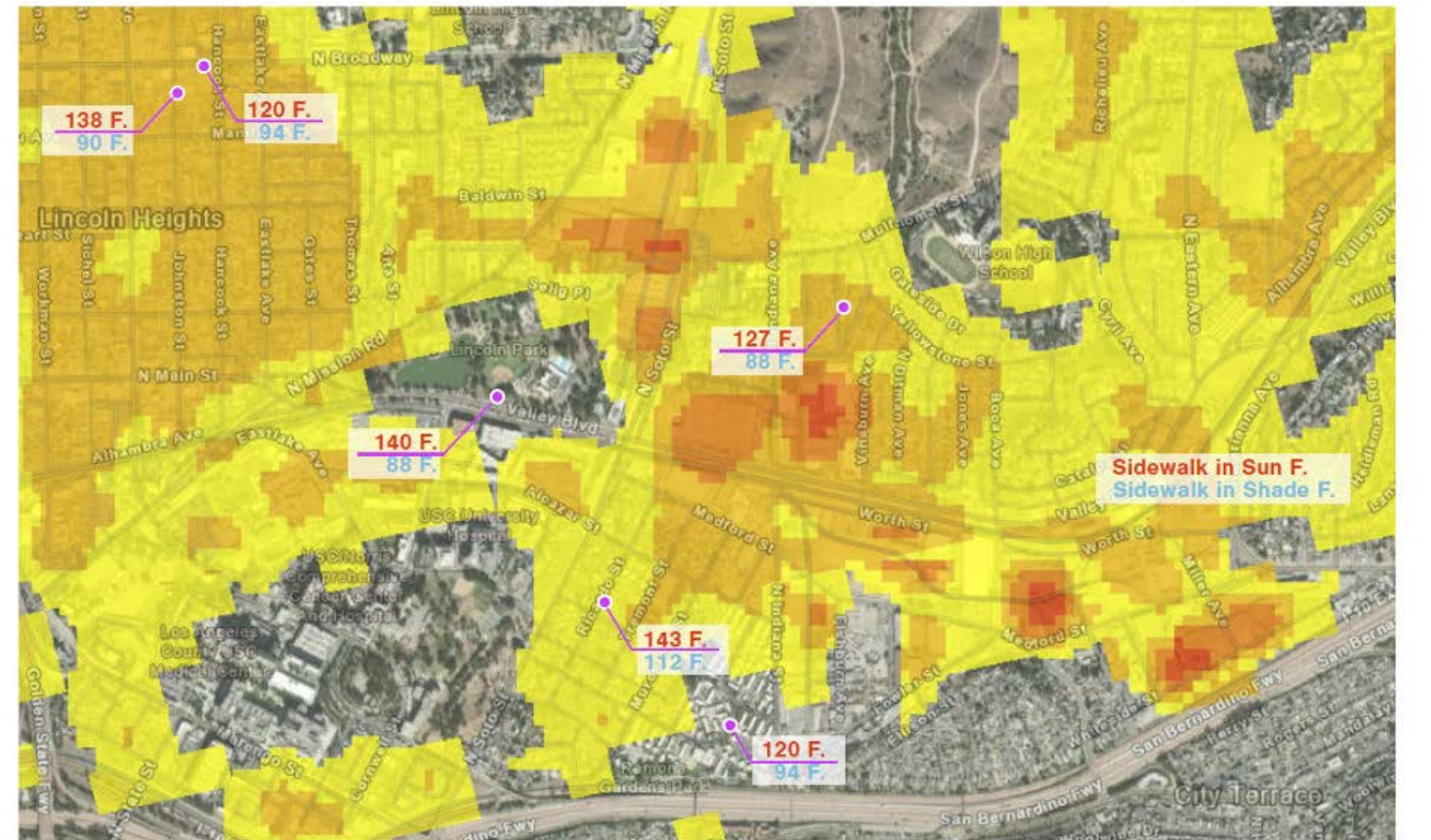
PROJECT CONTEXT

Extreme Heat and Air Pollution in LA

Days Over 95° F Annually



Temperature Readings September 15, 2020



This image service contains the relative heat severity for every pixel for every city in the United States. This 30-meter raster was derived from Landsat 8 imagery band 10 (ground-level thermal sensor) from the summers of 2018 and 2019.

The Trust for Public Land, Descartes Labs, USGS | USDA FSA, Maxar, Microsoft | Esri Community Maps Contributors, County of Los Angeles, Esri, HERE, Garmin, SafeGraph, INCREMENT P, METI/NASA, USGS, Bureau of Land Management, EPA, NPS, US Census Bureau, USDA

Dozens of researchers who looked at heat deaths in 732 cities around the globe from 1991 to 2018 calculated that 37% were caused by higher temperatures from human-caused warming, according to a study Monday in the journal Nature Climate Change.

September 15, 2020

Typical Residential Street

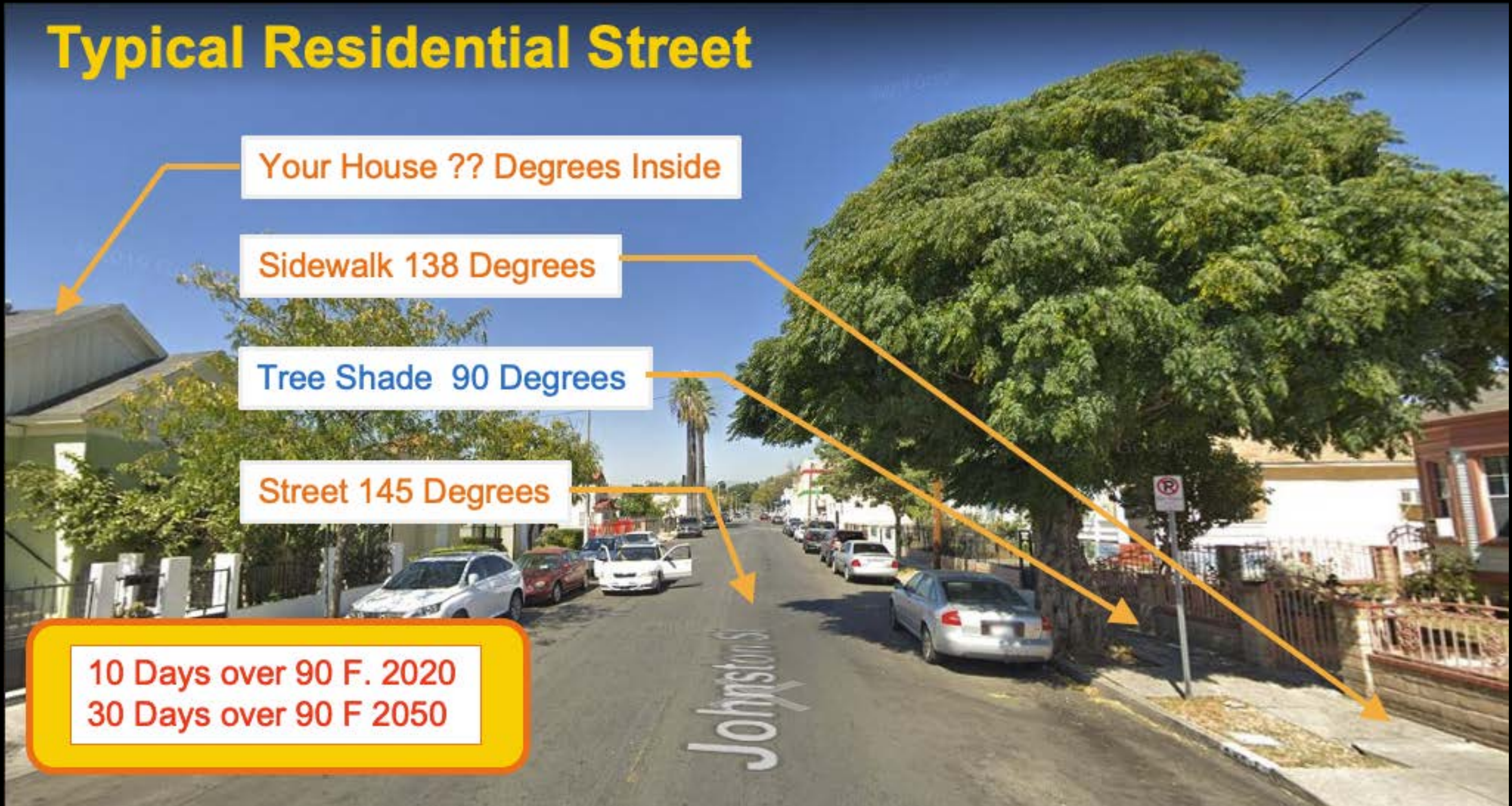
Your House ?? Degrees Inside

Sidewalk 138 Degrees

Tree Shade 90 Degrees

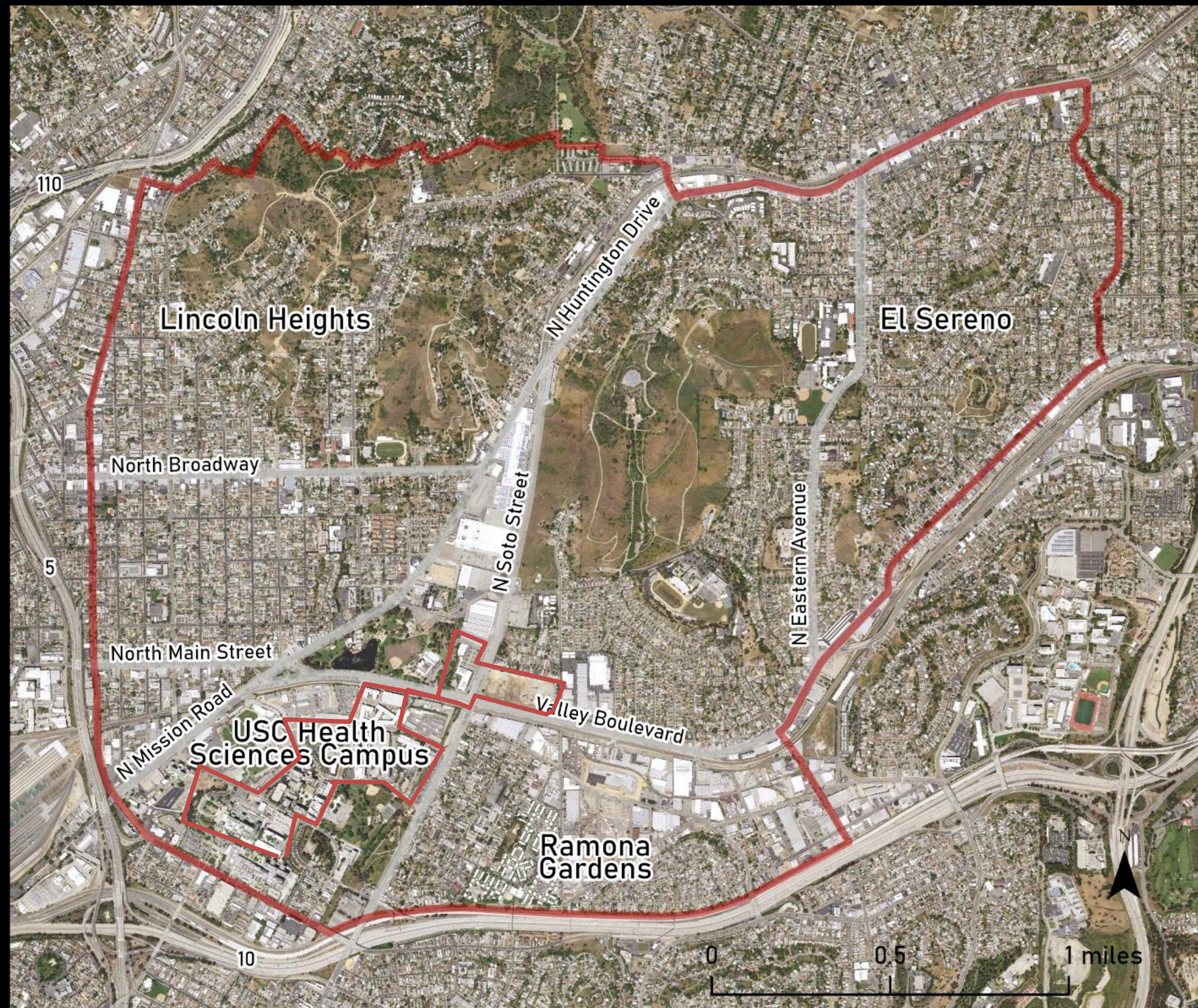
Street 145 Degrees

10 Days over 90 F. 2020
30 Days over 90 F 2050

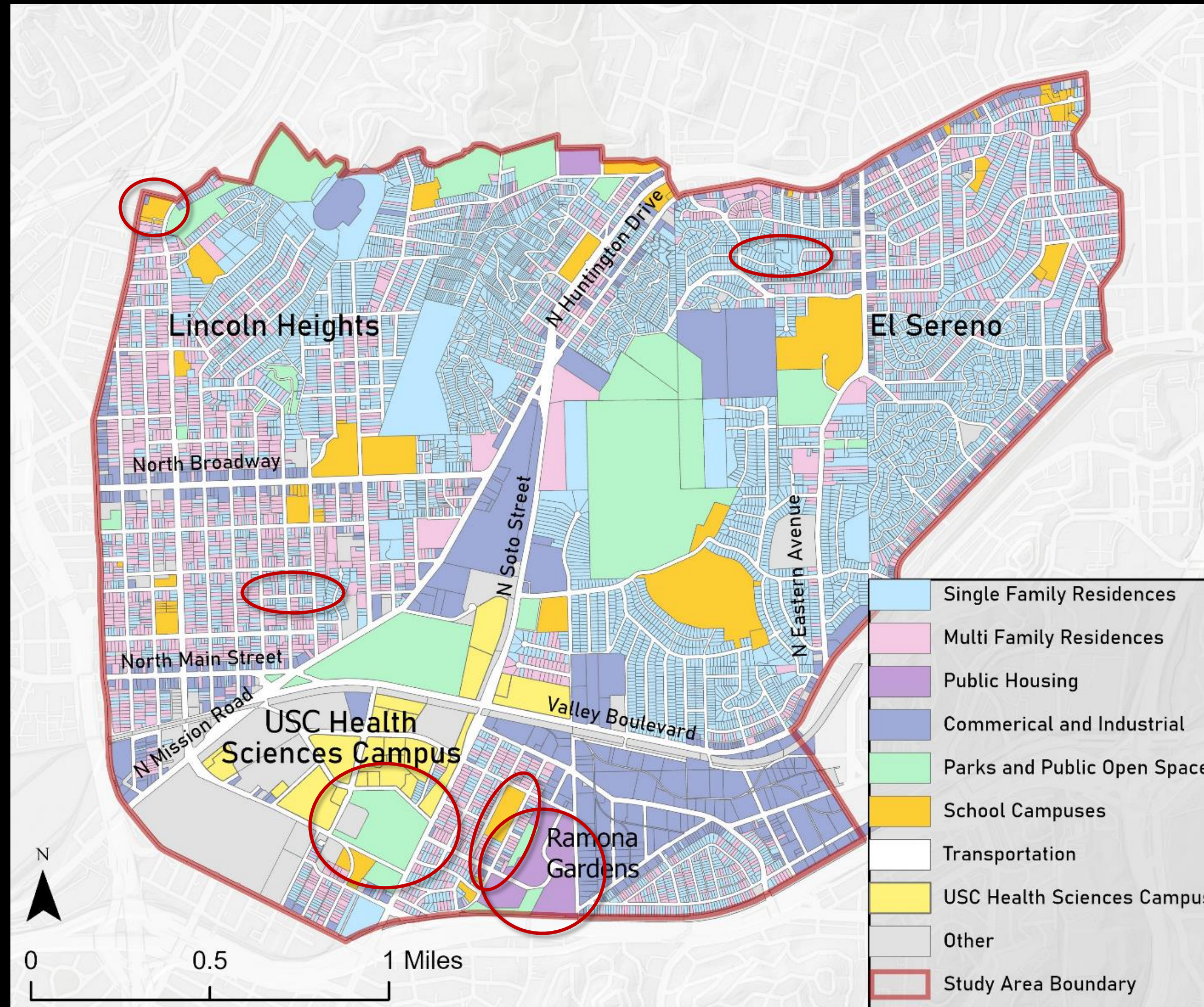




Study Site

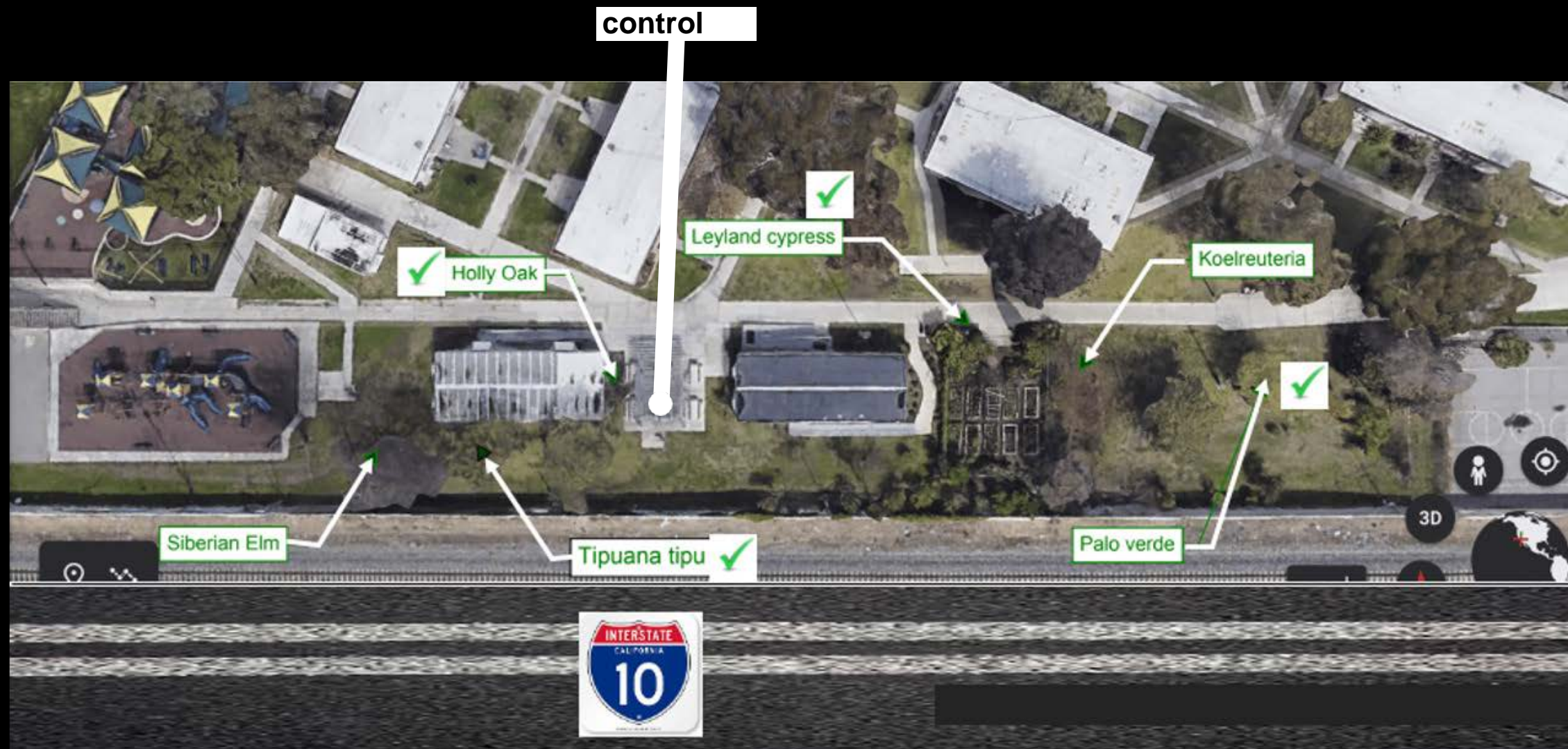


Land Use and Scenario Sites

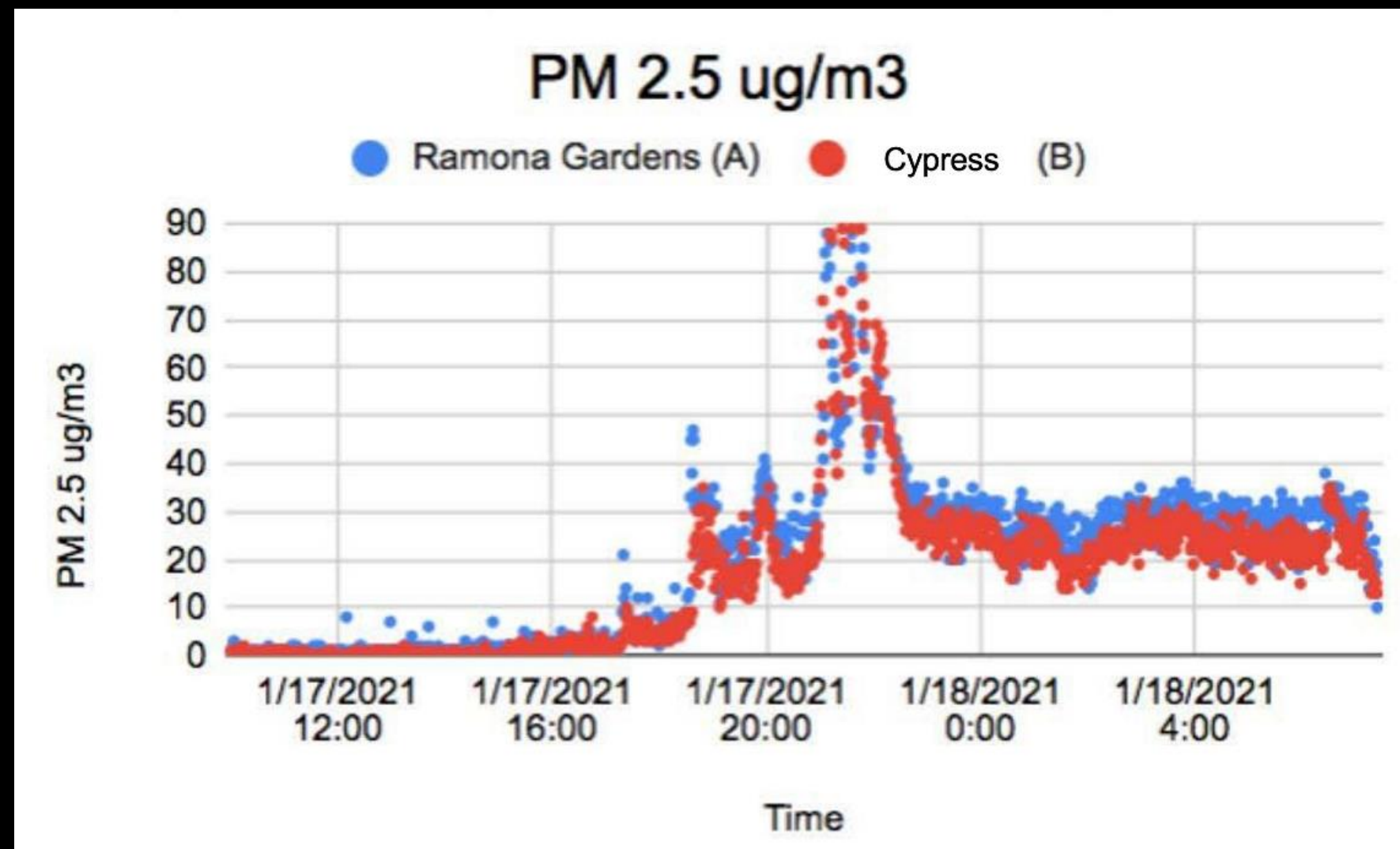


Ramona Gardens

January 17-21, 2021
Compared 4 trees to a control site

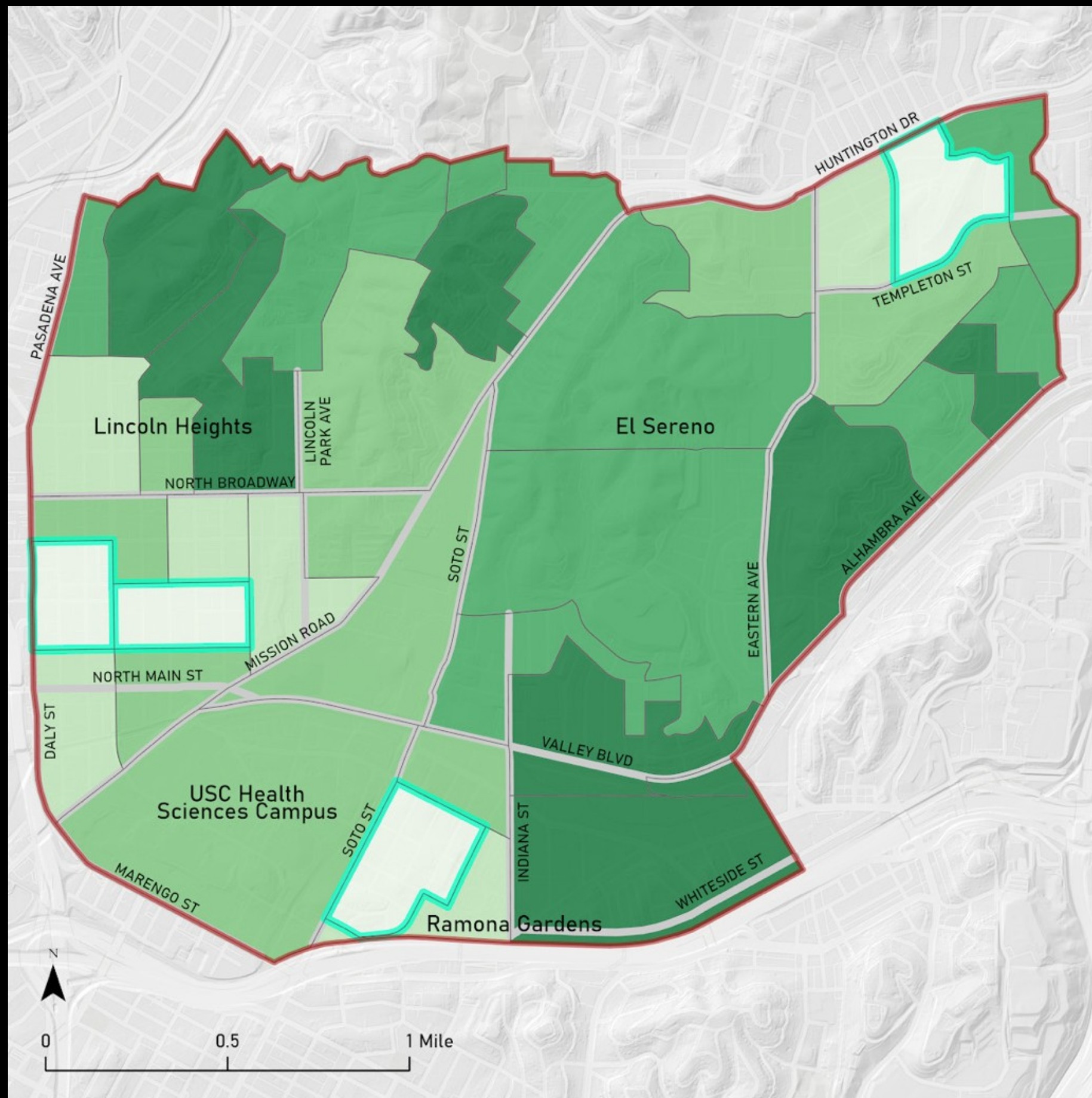


Can an individual tree make a difference? Yes



In terms of
PM capture:
Cypress >
Palo verde >
Oak = Tipu
tipu

Urban Forestry Priorities



Preferred Locations

Criteria Met



Criteria:

High % > 65 and
< 15 Years of Age

Median Household
Income < \$45,000

Persons per Square Mile
Density > 15,000

High % with Walking or
Bus Commute

Census Block Groups

Study Area Boundary

5 Greening Scenarios

Wide parkway
streets

Narrow parkway
streets

Public
parks

Elementary school
campuses

Ramona Gardens
public housing
complex

Narrow parkway streets



800% Additional Shade Cover by Trees

Legend

- Sidewalk
- Driveway
- Curb
- Property Green
- Parkway
- Street Parking
- House Roof
- Street Paving
- Utility Line
- Property Tree
- Street Tree

Existing Site



Tree Species

Large Shade Street Trees for Street Spaces



Small Trees in Existing Parkway and under Utility Lines

Private Property Trees



Barbee Street Plan-Tree Planting Street Improvements

New Trees in Narrow Parkway and Street – 36 Additional Trees
800 % Increase in Shade Area

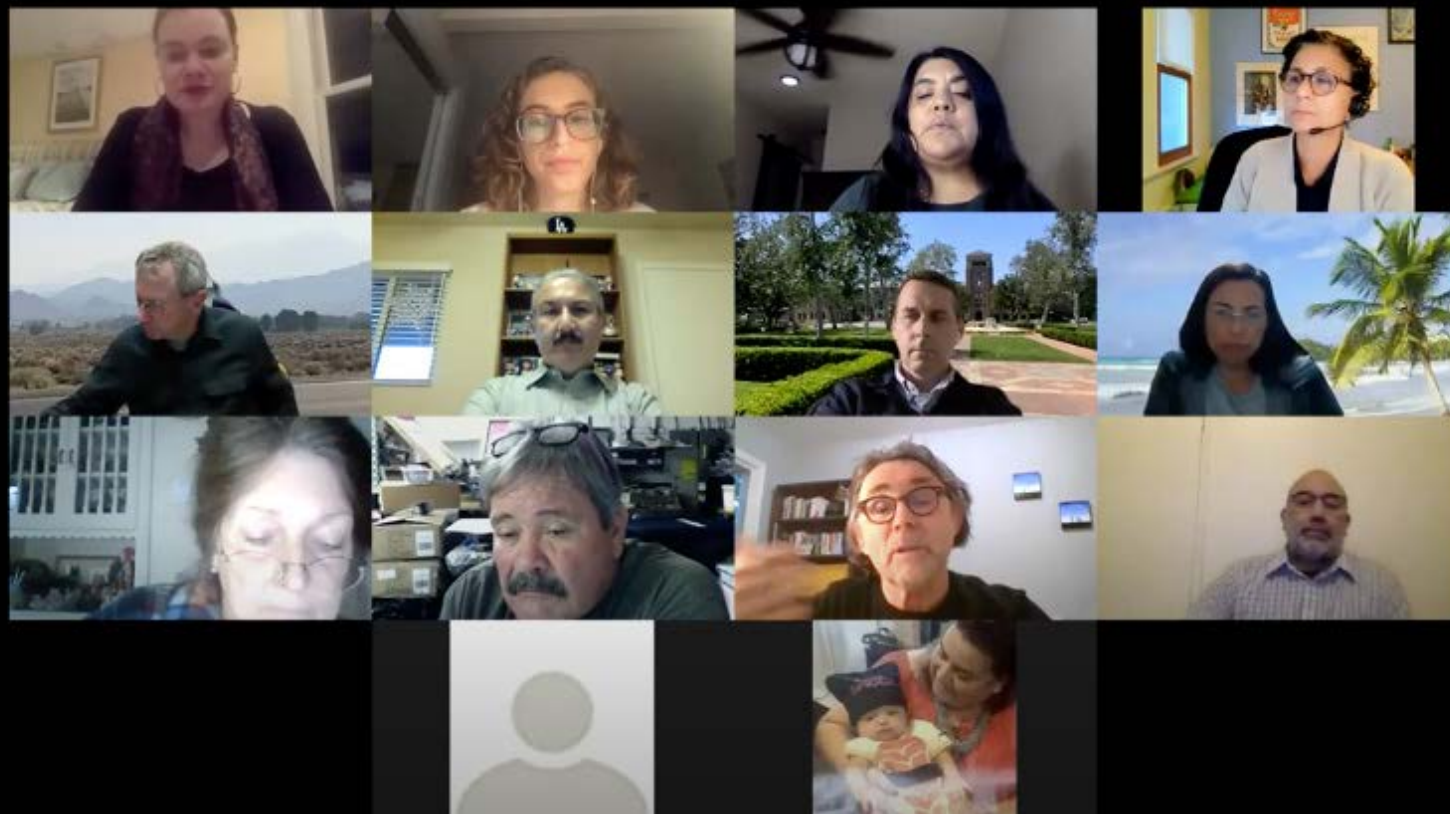


Existing Narrow Parkway Street



Proposed 'Cool Street'

Community Engagement



- Two community meetings
- One City Council Districts meeting
- Four North East Trees meetings
- 40 individuals invited, representing 29 groups and organizations

"I think these trees would be super awesome. In our communities, we do not have a lot of access to green space, and we deserve to have green space in our community. I think this is something that is really important."

Michelle,
Ramona
Gardens
Residential
Advisory
Committee

FOR MORE INFORMATION

Visit our website at <https://publicexchange.usc.edu/urban-trees-initiative/>

PDF [Download Arrow]

Urban Trees Initiative
Executive Summary

USC Dornsife, USC School of Architecture, CARBON CENSUS at USC

Extreme heat from climate change is a growing concern in Los Angeles. Current predictions suggest that by 2060 the city will see temperatures of 55 degrees Fahrenheit or higher 40 days per year.

With higher temperatures come greater risks to human health, including life-threatening conditions such as heat stroke and heart attacks. High temperatures also lead to increases in harmful air pollution that can trigger health issues for residents.

Unfortunately, communities of color and those with low incomes are disproportionately more likely to live in areas with less shade and worse air quality. For the University of Southern California and the City of Los Angeles, this inequity is an important issue of environmental justice.

In April 2019, Mayor Eric Garcetti announced Los Angeles' Green New Deal in response to the global climate emergency. The Green New Deal includes ambitious goals to address shade inequity; the city aims to plant 90,000 new trees and the plan calls for a 50 percent increase in land area covered by tree canopies in neighborhoods with the greatest need.

Increasing the urban tree canopy reduces risks caused by heat and pollution, improves health outcomes and general well-being, and makes urban neighborhoods more walkable, more enjoyable, more livable environments.

The Urban Trees Initiative is a collaboration between USC and the City of L.A. to guide the growth of an urban forest on the Eastside. This is part of a growing partnership between the city and USC as envisioned by Mayor Garcetti and President Carol L. Folt. Under this partnership, USC developed a strategic vision that recommends where the city and others could plant trees, as well as how many and what types of trees, to achieve the greatest benefit to the health and well-being of local residents. The initiative

presents a vision for climate justice that is driven both by data and meaningful engagement with the people who live in the area.

The multidisciplinary research team is composed of USC faculty and students with expertise in advanced mapping techniques, earth sciences and landscape architecture. The team studied a 5-square-mile area surrounding USC's Health Sciences Campus that is home to underserved communities, including much of Lincoln Heights, El Sereno and Ramona Gardens.

The project team spent time in the area and held several meetings with community members to understand their needs and preferences for green space. Over 29 organizations and groups were represented in these meetings, including pertinent nonprofits, local businesses and representatives from L.A. City Council district offices. Combining social priorities with scientific data, the project team

HSC Community	
79% Hispanic, 14% Asian	
34.7yrs median age, 21% 0-15 yrs, 12% > 65 yrs	
15,544 households, 3.6 people per household	
\$48,700 median household income	
71% of households < 200% of Federal Poverty Line	
62% are renters, 38% homeowners	
28% spend >50% of income on housing	
15% lack a vehicle	
66% of residents have lived in area > 10yrs	

PDF [Download Arrow]

Maximizing the benefits of increased urban canopy on the eastside of Los Angeles

Authors: Rachel Abizaid, Dulce Acosta, Mariana Sabbani, Will Bevelson, Jackson Fitzgerald, David Galaviz, Erik Holzman, Yuhang Jiang, Beau MacDonald, Esther Margulies, Melinda Ramos-Alarcon, Seher Randkawa, Coleman Rowland, Kate Weber, John Wilson

USC Dornsife, USC School of Architecture, CARBON CENSUS at USC

PDF [Download Arrow]

Iniciativa de Árboles Urbanos
Resumen Ejecutivo

USC Dornsife, USC School of Architecture, CARBON CENSUS at USC

El calor extremo debido al cambio climático es una preocupación creciente en Los Angeles. Las predicciones actuales indican que para el 2060 la ciudad tendrá temperaturas de 55 grados Fahrenheit (35 grados C) o mayores 40 días al año.

Con temperaturas más altas existen mayores riesgos para la salud humana, incluyendo condiciones que pueden ser mortales como la insolación y los ataques cardíacos. Las temperaturas altas también resultan en aumentos en la contaminación del aire dañina, lo que puede causar problemas de salud para los residentes de la ciudad.

Desafortunadamente, las comunidades de color y aquellas de bajos recursos son desproporcionadamente las que viven en zonas con menos sombra y peor calidad del aire. Para la Universidad del Sur de California y la ciudad de Los Angeles, esta inequidad es un asunto importante en cuestiones de justicia ambiental.

En abril de 2019, el alcalde Eric Garcetti anunció el Nuevo Acuerdo Ecológico (Green New Deal) de Los Angeles en respuesta a la emergencia mundial del cambio climático. El Nuevo Acuerdo Ecológico incluye metas ambiciosas para abordar el problema de la inequidad de sombra; la ciudad tiene planificado sombrar 90,000 árboles nuevos y el plan incluye un aumento del 50 por ciento en superficie terrestre cubierta por árboles en vecindarios más necesitados.

Aumentar la sombra urbana por medio de árboles reduce el riesgo causado por el calor y la contaminación, mejora la salud y el bienestar general y hace que los vecindarios urbanos sean más transitables, agradables y habitables.

La iniciativa de Árboles Urbanos es una colaboración entre USC y la ciudad de Los Angeles para guiar el crecimiento de un bosque urbano en el lado este de la ciudad. Esta forma parte de una asociación en desarrollo entre la ciudad y USC prevista por el alcalde Garcetti y la presidenta Carol L. Folt. Bajo esta asociación, USC desarrolló una visión estratégica que recomienda en dónde la ciudad y otros socios pueden sembrar árboles, así como también cuántos y qué tipos de árboles deben sembrarse para obtener las mejores resultados en beneficio para la salud y el bienestar de los residentes locales. La iniciativa presenta una visión de justicia ambiental que está siendo impulsada por tanto los datos científicos como la participación significativa de las personas que viven en el área.

El equipo multidisciplinario de investigación está formado por la facultad de USC y estudiantes con experiencia en técnicas avanzadas de mapeo, ciencias de la tierra y arquitectura de paisajes. El equipo estudió un área de 5 millas cuadradas (13 km²) alrededor del campus de Ciencias de la Salud de USC que sirve como el hogar de comunidades marginadas, incluyendo gran parte de Lincoln Heights, El Sereno y Ramona Gardens.

El equipo del proyecto dedicó su tiempo a estudiar el área y organizó varias reuniones con miembros de la comunidad para entender sus necesidades y preferencias para espacios verdes. Más de 29 organizaciones y grupos fueron representados en estas reuniones, incluyendo organizaciones sin fines de lucro, negocios locales y representantes de las oficinas de distrito del Ayuntamiento de Los Angeles. Combinando las prioridades sociales con los datos científicos,

Comunidad del HSC	
79% Hispánicos, 14% Asiáticos	
34.7 años edad promedio, 21% 0-15 años, 12% > 65 años	
15,544 viviendas, 3.6 personas por vivienda	
\$48,700 ingreso familiar promedio	
71% de las viviendas < 200% del Nivel Federal de Pobreza	
62% son inquilinos, 38% son propietarios de su vivienda	
28% gastan >50% de sus ingresos en su vivienda	
15% no tienen un vehículo	
66% de los residentes han vivido en el área > 10años	

Housing

Vivienda

Rental Assistance Programs Update

Actualización de los programas de asistencia para viviendas de alquiler

Greg Bonett, Public Counsel

Ruby Rivera, InnerCity Struggle

KEEP LA
HOUSED





THE CRISIS ISN'T OVER!

- **As of April 26th 2021, tenants in LA County accrued an estimated \$938 million in rental debt.**
- **Over 218,000 LA County households are behind on rent**

¡LA CRISIS SIGUE!

- **A partir del 26 de abril de 2021, los inquilinos del condado de Los Ángeles acumularon una deuda de alquiler estimada en \$ 938 millones.**
- **Más de 218,000 hogares del condado de Los Ángeles están atrasados en el pago de la renta**

EMERGENCY MEASURES SET TO EXPIRE JUNE 30

MEDIDAS DE EMERGENCIA SE EXPIRAN EL 30 DE JUNIO

Unless extended, many tenants could face eviction on July 1st or be sued in small claims court for rent debt on August 1st

A menos que se extiendan, muchos inquilinos podrían enfrentar el desalojo el 1 de julio o ser demandados en corte de reclamos menores por deudas de alquiler el 1 de agosto.

Could face wage garnishment - *Podrian enfrentar embargo de sueldo*

Visit stayhousedla.org if you receive a notice from your landlord

Visiten stayhousedla.org si reciben aviso de su propietario

State rental assistance is available, but has been difficult for tenants to access and can still leave tenants in debt.

Asistencia estatal esta disponible, pero ha sido dificil acceder y aun puede dejar inquilinos endeudados.

Visit housingiskey.com if you need to apply for rental assistance

Visiten housingiskey.com si necesita solicitar asistencia para el alquiler.

WHILE CORPORATE LANDLORDS ARE MAKING MILLIONS

MIENTRAS PROPIETARIOS CORPORATIVOS ESTAN GANANDO MILLONES

Invitation Homes, the nation's largest landlord of single-family residences, collected \$50 million more last year than in 2019, a 30% increase, Mid-America Apartment Communities, which owns around 100,000 units, saw operating profits increase by 60% last year, by far the company's biggest-ever increase.

Invitation homes, el propietario de residencias unifamiliares más grande del país, recaudó \$ 50 millones más el año pasado que en 2019, un aumento del 30%, Mid-America Apartment Communities, que posee alrededor de 100,000 unidades, experimentó un aumento de 60% en las ganancias operativas el año pasado, el mayor aumento en la historia de la compañía.

DEBT FREE RECOVERY PLAN TO KEEP LA HOUSED

PLAN DE RECUPERACIÓN SIN DEUDA PARA MANTENER L.A. ALOJADOS

1

ADDRESS THE GAPS IN RENTAL ASSISTANCE
ABORDAR LAS DEFICIENCIAS EN LA ASISTENCIA DE ALQUILER

2

ELIMINATE COVID-19 HOUSING DEBT
ELIMINAR DEUDA DE VIVIENDA POR COVID-19

3

END EVICTIONS & COLLATERAL CONSEQUENCES OF RENT DEBT
PREVENIR DESALOJOS Y CONSECUENCIAS COLATERALES DE LA DEUDA DE ALQUILER

TAKE ACTION - TOMEN ACCION



- Endorse the Platform - Respaldar la plataforma <http://bit.ly/KLAHendorse>
- Sign the Petition- Firma la Peticion <http://bit.ly/keeplahoused>
- Provide Public Comment at June 8th BOS Meeting in favor of motion by Sup. Solis to study how to resolve rent debt and support tenants.
- *Dar comentario público en la reunión de la Junta de Supervisores el 8 de junio en favor de nuestra moción*
<http://bit.ly/takeactionklah>



Youth

Juventud

Youth Experience Under COVID-19

Experiencia juvenil durante COVID-19

Stephanie Medina and Cassandra Castillo, Invest in Youth Coalition

Tanya Ortiz-Franklin, LAUSD Board Member

Paula Helu-Brown, PhD, LMFT, Mount Saint Mary's University

Dr. Nava Yeganeh, Acute Communicable Disease Control Program, LA County Department of Public Health

INVEST IN YOUTH

Stephanie Medina & Cassandra Castillo



Health Innovation Community Partnership

June 4, 2021

Tanya Ortiz Franklin
LA Unified School Board Member



**TANYA ORTIZ
FRANKLIN**
BOARD DISTRICT 7



achieve.lausd.net/bd7



bd7@lausd.net



(213) 241-6385



[lausdbd7](#)

LAUSD Path to Recovery



Health and Safety

Nation-leading standards for safe school campuses

Accelerate Learning

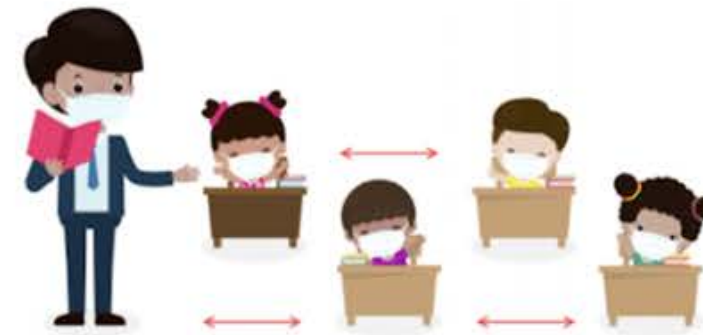
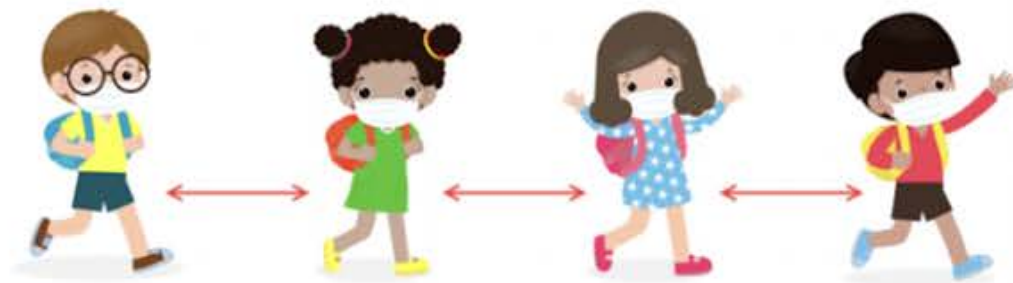
Instructional supports for all learners

Mental Wellness

Resources dedicated to whole child

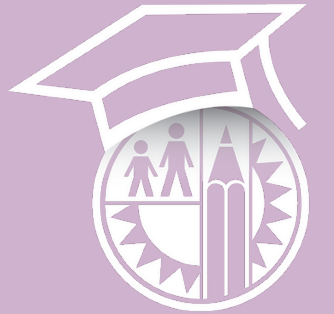
Supports for Specialized Populations

Intensive supports for students with unique needs



Consistent focus on equity to meet the needs of students

LAUSD Recovery: Vaccination Program



- <https://achieve.lausd.net/covidvaccineappt> or **(213) 328-3958**
- Vaccination access to students ages 12-18 and their families
- 25 vaccination sites throughout LA with community partners
- 250 secondary schools mobile vaccination
- 5,000 first dose of student vaccinations to date
- <https://dailypass.lausd.net> for easy student appointments
- Ages 12-15 adult presence required
- Ages 16-17 consent forms required (available on website)
- Public Service Announcements [@laschools](#) [@lausdbd7](#)



LAUSD Recovery: Learning & Wellness

- **\$5.5 billion** in state and federal recovery dollars (\$1.2B already spent)
- LAUSD is hiring! Teachers, social workers, psychologists, custodial staff, IT support, licensed vocational nurses, teachers assistants and more!
- Certificated apply at <https://teachinla.com>
- Classified apply at <https://lausdjobs.org>
- Upcoming Board discussions <https://laschoolboard.org>
 - June 8th (includes Partners for Student Success)
<https://achieve.lausd.net/Page/16480>
 - June 15th Budget & Local Control Accountability Plan
 - June 17th & 21st Accelerating Learning & Wellness
 - June 22nd Budget Approval



LAUSD Recovery: Specialized Populations

- Black students: Black student achievement plan and investments
- High & highest need schools: Student Equity Needs Index \$700 million directly to schools
- Youngest learners: Primary Promise
- Students with disabilities: Additional staff
- Food distribution daily, including Grab & Go for students staying online
- Summer learning available for all!

<http://achieve.lausd.net/summer2021>



Los Angeles Unified **Summer of Learning**

An illustration of four diverse children (two boys and two girls) sitting on the floor, engaged in learning activities. One boy is reading a book, another is playing with colorful blocks, and two girls are also reading. The background is a dark blue space-themed scene with planets, a rocket, and a satellite.

JOIN LOS ANGELES UNIFIED FOR A FUN SUMMER OF LEARNING

June 22nd - July 23rd
Visit [Achieve.lausd.net/summer2021](http://achieve.lausd.net/summer2021) for all the exciting details!

Programs for all currently enrolled Los Angeles Unified students in TK - 12th grade

A Few Summer Highlights

- On-campus and online options
- Full-day (8:30 a.m. - 6:00 p.m.) on-campus programs available
- For credit classes available

Meals available for participating students

Please visit [Achieve.lausd.net/summer2021](http://achieve.lausd.net/summer2021) for application details

The LAUSD logo is repeated at the bottom right of the flyer. It features the same circular emblem as above, but with the text "LOS ANGELES UNIFIED SCHOOL DISTRICT" around the top and "STUDENTS AT THE CENTER" around the bottom.

Adolescent Mental Health

- 12 -17 developmentally (not always coincides with chronological age)
- They seek differentiation and individuation (usually from parents/caregivers)
- Characterized by attachment to peers and peer-reliant self esteem
- Learning becomes increasingly difficult with distractions



Psychological Disorders and COVID-19

- Visits to the hospital related to mental illness increased by 31% during the pandemic in ages 12-17.

Main Concerns have been:

- Anxiety
- Depression
- Sleep disorders
- Stress

There has also been an increase in eating disorders.





Let's think Intersectionally

- Race
- Ethnicity
- Gender
- Sexuality
- Religion
- Immigration Status

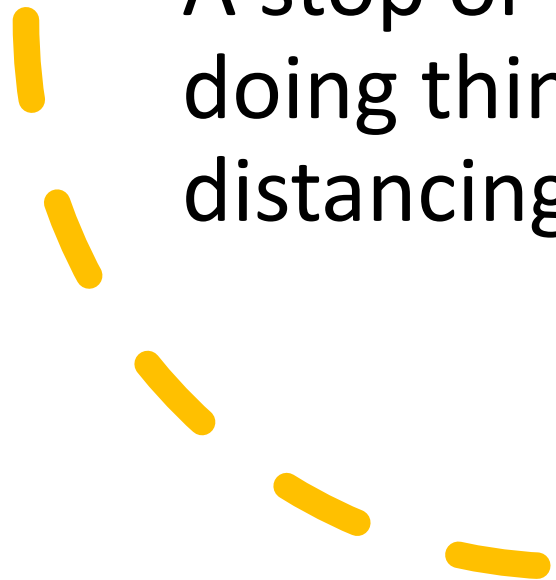
What else has been happening alongside a pandemic? All of this might be impacting mental health. Let's not minimize other issues or think of only one thing.





Red Flags/Warning Signs

- Constant irritability and anger
- Persistent sleep disturbances
- Lasting behavioral changes
- Neglecting responsibilities often
- A stop or noticeable decrease in doing things they enjoyed or distancing from friends and family
- Lasting changes in eating
- Getting sick frequently (GI)



Suicide in Adolescents

Myths and Taboos

Talk and Ask Direct Questions:

- “Have you thought of hurting or killing yourself?”
- Don’t become alarmed, don’t get angry or make them feel guilty about their thoughts/feelings.
- Seek help from a specialist.



What to do?



Don't stop asking "How are you?"



Listen whenever they are ready to speak



Recognize how hard it is to be a teenager during these times



Give them choices and help promote their independence



Structure and responsibilities can help

Areas of Support

1

Give them their own space and be available to listen:

- If there isn't enough room in the home all the time, try to allow them time in the bathroom or other spaces for a bit of privacy every day. Be ready to listen when they are ready to talk.

2

Don't put too much pressure on academic achievement but support and celebrate success:

- It is normal to fall a bit behind. Talk through what might be difficult for them and offer support so they can catch-up once they are able to focus.

3

Make sure there is still some structure in place:

- With some school, chores and responsibilities, but also time for them to spend with friends (online or in-person when possible) and on hobbies.

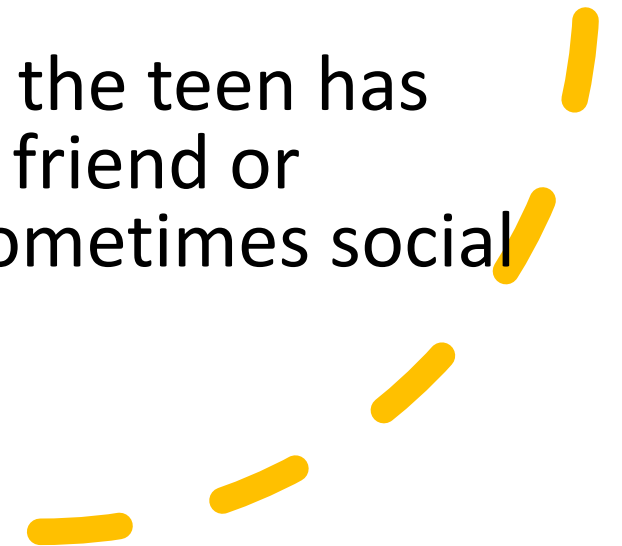
Areas of Support

- **Don't emphasize or make comments about weight gain or physical appearance, but support outdoor activities when desired (no pressure):**

Many people have gained weight and spent their days in sweatpants or PJ's during the pandemic, this is perfectly normal. They also might be wanting to get out and exercise and might need encouragement or support, however too much focus on this from parents/caregivers/schools can backfire.

- **Social media can be a source of both support and stress:**

Make sure to talk about it and that the teen has other non-media outlets such as a trusted friend or relative to talk to and confide in. Realize sometimes social media can be their only lifeline.



Contact info and Resources



phelu@msmu.edu



@dra.paulahb

<https://teenlineonline.org/>

<https://theyouthalliance.com/resources/help-hotlines/>

DMH Helpline 24/7 : [1-800-854-7771](tel:1-800-854-7771)

COVID-19 Cases and Vaccination for Pediatrics

Children and COVID-19

3,782,000 million children in the US have been diagnosed with COVID-19

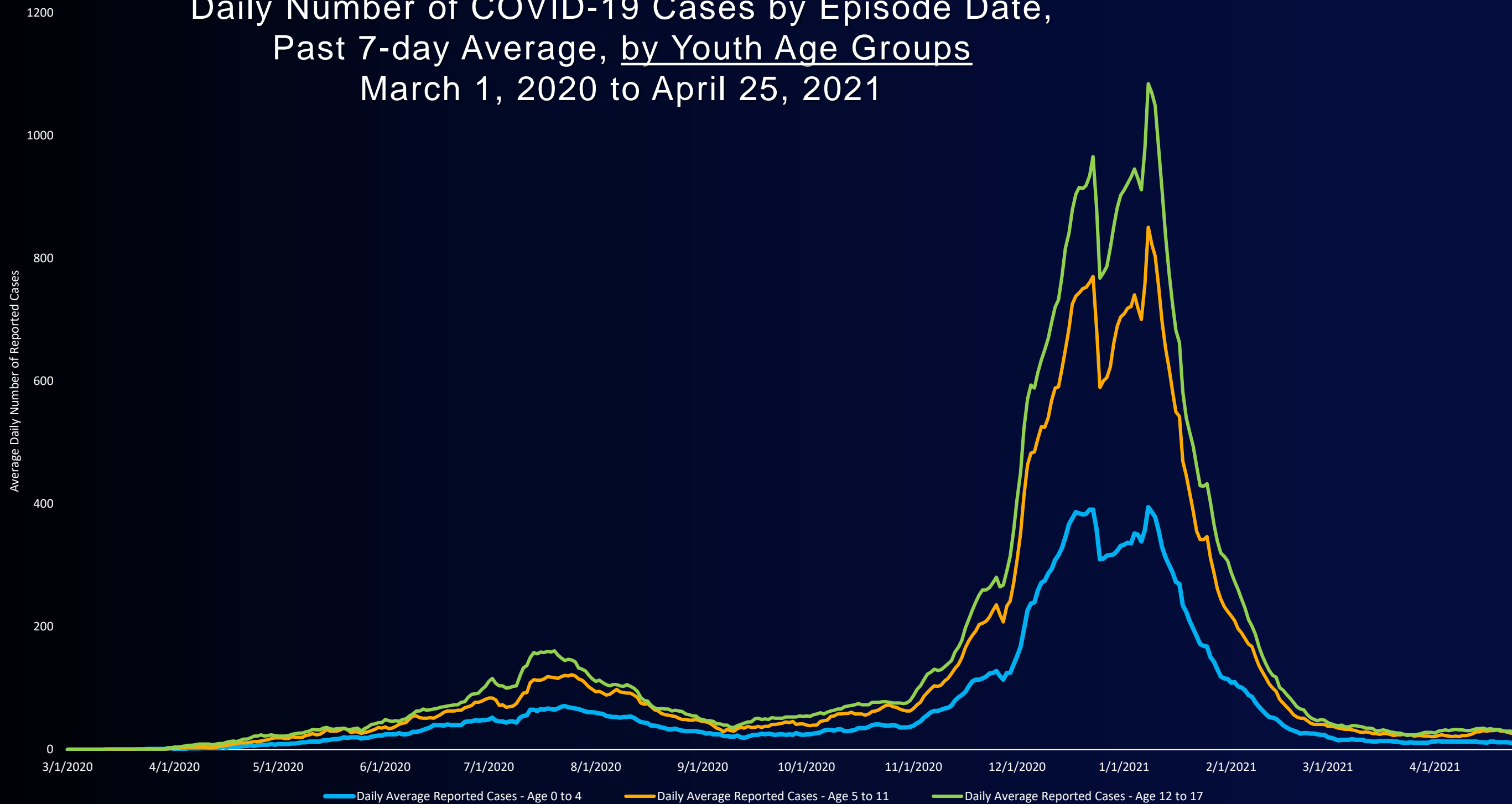
- Roughly 1-2% are hospitalized
- Over 300 deaths

Serious disease and death are less common in children; however, COVID-19 has indirectly impacted their health and well-being through

- School closures
- Cessation of important activities for children's development, including specialized therapy services, sports and social gatherings
- Loss of family members
- Loss of familial sources of income

Vaccines are critical for children's health and provide a pathway to return to more normal activities

Daily Number of COVID-19 Cases by Episode Date, Past 7-day Average, by Youth Age Groups March 1, 2020 to April 25, 2021



covid19.lacounty.gov

5/02/2021

Cumulative Deaths by youth Age groups, March 1, 2020 – April 25, 2021*

		Cumulative Deaths
Age	0-4 years	1
	5-11 years	0
	12-17 years	4

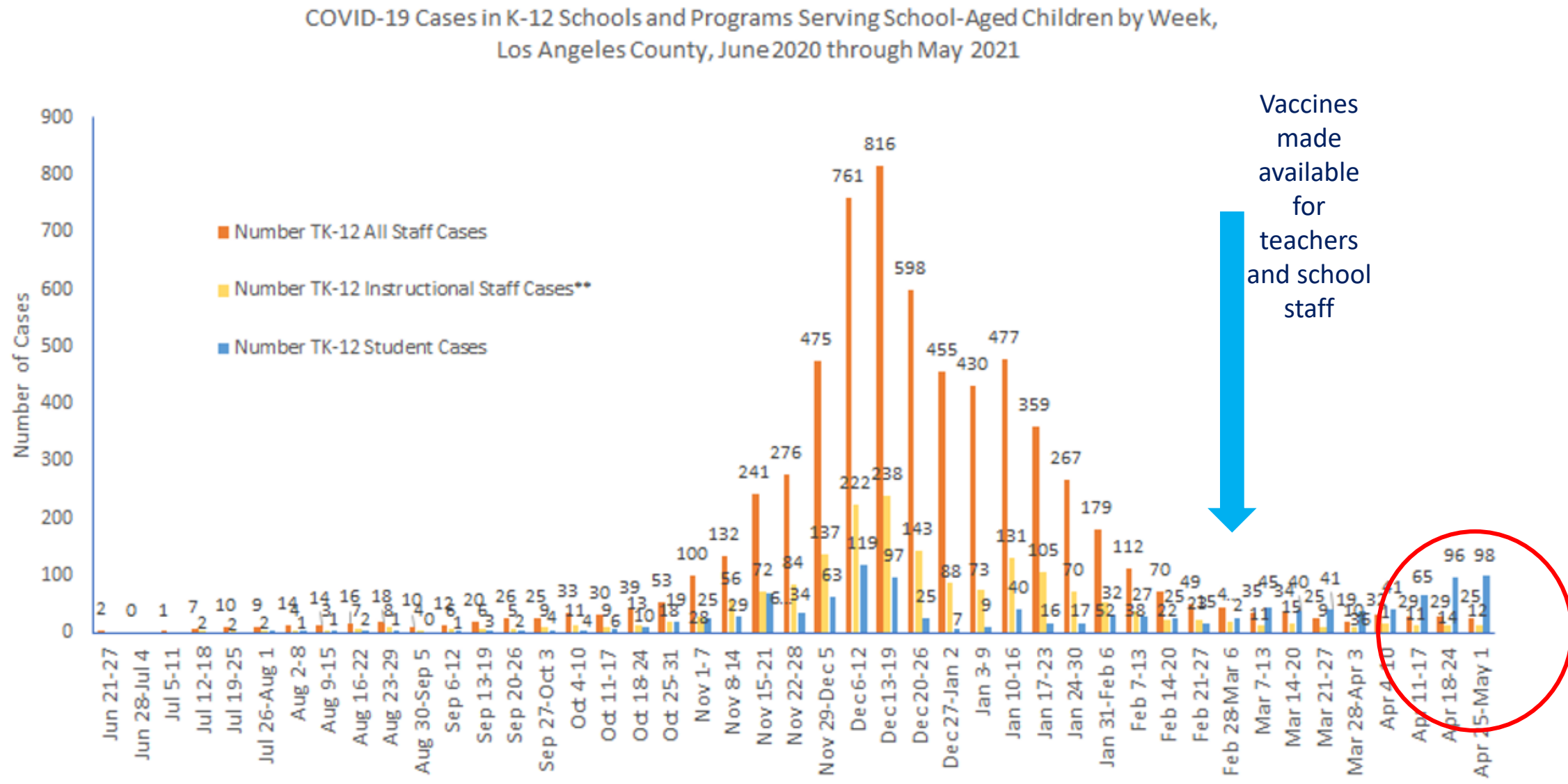
*Excluding Long Beach and Pasadena



COVID Impact in Schools

COVID-19 Cases in K-12 Schools and Programs Serving School-Aged Children in Los Angeles County

Figure 7. Student and Staff COVID-19 Cases in K-12 Schools and Programs Serving School-Aged Children by Week, LA County, Data as of 5-4-2021



Los Angeles Pediatric COVID-19 Vaccine

- Children and adolescents comprise 21% of the population in Los Angeles County
 - Since April 15th, 253,131 adolescents 16-17 years of age have been eligible for the Pfizer-Biontech COVID-19 vaccine
 - 111,773 (44%) received one dose of vaccine
 - Food and Drug Administration expanded Pfizer vaccine eligibility to include 502,674 youth 12-15 years of age with vaccines beginning May 13th for this age group
 - 109,078 (21.7%) received one dose of vaccine

Pediatric vaccine Plan



School-based Clinics

- FQHC school-based clinics
- Wellbeing Centers/Planned Parenthood
- School Nurse

School-site Pop-up Clinics

- FQHC/Pharmacy/ACH/Provider Partner

Primary-care Pediatricians and Family Practice

- AAP
- VFC and Primary care provider onboarding

Summer Programs



[covid19.lacounty.gov](https://www.covid19.lacounty.gov)

5/02/2021

School-based Clinics

- There are 62 permanent **School Based Clinics**
 - 82% of the school-based clinics are in HPI+ zip codes
- 19 of the school-based clinics are actively administering COVID-19 vaccines
- Capacity at school-based clinics ranges from 100-500 per day

Wellbeing Centers

- **27 DPH Wellbeing Centers supported by Planned Parenthood Los Angeles (PPLA).**
- PPLA clinicians staff the Wellbeing Centers one day per week, providing the opportunity to administer 30 vaccines per day per site
- PPLA will receive vaccine to a central clinic and reposition vaccine to the Wellbeing Centers for each vaccine clinic
- The first vaccine event was held at Esteban Torres High School School on 5/26

Pop-up School Clinics

- Vaccine clinics held at a school one time or on a semi-regular basis
- Pop-up clinics utilize school grounds such as a parking lot, gymnasium, or auditorium
- 21 school districts in HPI+ regions have been partnered with at least one vaccine partner for school site pop-up clinics
- There are currently 118 school sites providing vaccine clinics and 69% are in HPI+ regions

School Site Clinic Calendar – June 6-12

SYMBOL	SCHOOL	SYMBOL	SCHOOL
1	EASTSIDE UNION ELEMENTARY	42	WEST COVINA UNIFIED SCHOOL
2	LANCASTER ELEMENTARY	43	ROSEMEAD ELEMENTARY
3	GORMAN ELEMENTARY	44	GARVEY ELEMENTARY
4	WESTSIDE UNION ELEMENTARY	45	MOUNTAIN VIEW ELEMENTARY
5	HUGHES-ELIZABETH LAKES ELEM	46	BASSETT UNIFIED SCHOOL
6	WILSONA ELEMENTARY	47	WALNUT VALLEY UNIFIED SCHOOL
7	PALMDALE ELEMENTARY	48	HACIENDA-LA PUENTE UNIF SCHOOL
8	KEPPEL UNION ELEMENTARY	49	MONTEBELLO UNIFIED SCHOOL
9	CASTAIC UNION ELEMENTARY	50	SANTA MONICA-MALIBU UNIF SCH
10	SAUGUS UNION ELEMENTARY	51	VALLE LINDO ELEMENTARY
11	ACTION-AGUA DULCE UNIF SCHOOL	52	ROWLAND UNIFIED SCHOOL
12	SULPHUR SPRINGS UNION ELEM	53	WHITTIER CITY ELEMENTARY
13	NEWHALL ELEMENTARY	54	CULVER CITY UNIFIED SCHOOL
14	SNOWLINE JOINT UNIFIED SCHOOL	55	EL RANCHO UNIFIED SCHOOL
15	LA CANADA UNIFIED SCHOOL	56	INGLEWOOD UNIFIED SCHOOL
16	LOS ANGELES UNIFIED SCHOOL	57	EAST WHITTIER CITY ELEMENTARY
17	AZUSA UNIFIED SCHOOL	58	LOS NIETOS ELEMENTARY
18	CLAREMONT UNIFIED SCHOOL	59	LOWELL JOINT ELEMENTARY
19	GLENDALE UNIFIED SCHOOL	60	DOWNEY UNIFIED SCHOOL
20	PASADENA UNIFIED SCHOOL	61	SOUTH WHITTIER ELEMENTARY
21	MOUNT BALDY JOINT ELEMENTARY	62	LITTLE LAKE CITY ELEMENTARY
22	BONITA UNIFIED SCHOOL	63	LENNOX ELEMENTARY
23	DIARTE UNIFIED SCHOOL	64	LOWELL JOINT ELEMENTARY
24	GLENDORA UNIFIED SCHOOL	65	LYNWOOD UNIFIED SCHOOL
25	BURBANK UNIFIED SCHOOL	66	EL SEGUNDO UNIFIED SCHOOL
26	MONROVIA UNIFIED SCHOOL	67	WISEBURN ELEMENTARY
27	ARCADIA UNIFIED SCHOOL	68	HAWTHORNE ELEMENTARY
28	LAS VIRGENES JOINT UNIF SCHOOL	69	COMPTON UNIFIED SCHOOL
29	SAN MARINO UNIFIED SCHOOL	70	NORWALK-LA MIRADA UNIFIED SCHO
30	BALDWIN PARK UNIFIED SCHOOL	71	PARAMOUNT UNIFIED SCHOOL
31	TEMPLE CITY UNIFIED SCHOOL	72	BELLFLOWER UNIFIED SCHOOL
32	SOUTH PASADENA UNIFIED SCHOOL	73	LAWDALE ELEMENTARY
33	SAN GABRIEL UNIFIED SCHOOL	74	MANHATTAN BEACH UNIFIED SCHOOL
34	CHARTER OAK UNIFIED SCHOOL	75	ABC UNIFIED SCHOOL
35	SANTA MONICA-MALIBU UNIF SCH	76	REDONDO BEACH UNIFIED SCHOOL
36	BEVERLY HILLS UNIFIED SCHOOL	77	TORRANCE UNIFIED SCHOOL
37	COVINA VALLEY UNIFIED SCHOOL	78	LONG BEACH UNIFIED SCHOOL
38	BEVERLY HILLS UNIFIED SCHOOL	79	HERMOSA BEACH CITY ELEM
39	EL MONTE CITY ELEMENTARY	80	PARAMOUNT UNIFIED SCHOOL
40	ALHAMBRA UNIFIED SCHOOL	81	PALOS VERDES PENINSULA U SCH
41	POMONA UNIFIED SCHOOL		

6	7	8	9	10	11	12
Centennial HS 2-5pm 1st dose, Kaiser, Pfizer & J&J (300)	Dominquez HS 8:30- 7:30, St John's,Pfizer	Markham MS 9- 11:45am & 1:30-3:45, Watts Healthcare, Moderna	Animo Pat Brown HS 8-5pm, St. John Mobile Team, Pfizer, Capacity:300 1st dose	Markham MS 9- 11:45am & 1:30-3:45, Watts Healthcare, Moderna	Gompers MS South LA, 10-4pm, Kedren, 1st dose, Pfizer and J&J	Maclay MS 8:30- 11:30am, Northeast Valley Health, Pfizer, Moderna and J&J, Capacity:110
	South East HS 11- 4pm, John Wesley Health Institutue, Pfizer	Crenshaw HS 8-5pm, THE Clinic, Pfizer	Gage MS, Northeast Community Clinic, Pfizer, Moderna	Maclay MS 8:30- 11:30am, Northeast Valley Health, Pfizer, Moderna and J&J, Capacity:100	Crenshaw HS 8-5pm, THE Clinic, Pfizer	Hollenbeck MS 8- 4pm, Clinica Romero, Moderna
	Magnolia Science Academy (1) 9:30- 3pm, Southern CA Medical Center Pfizer	Dominquez HS 8:30- 7:30, St John's,Pfizer	Crenshaw HS 8-5pm, THE Clinic, Pfizer	Crenshaw HS 10- 6pm, THE Clinic, Pfizer	Dominquez HS 8:30- 5:30, St John's,Pfizer	Gompers MS South LA, 10-2pm, Kedren, 2nd dose, Pfizer and J&J
	Placerita Junior HS, Albertsons,Pfizer	Clinton Elementary School 9-5, St John's,Pfizer	Clinton Elementary School 9-5, St John's,Pfizer	Centennial HS 2-5pm, Kaiser Permanente, 1st dose , Capacity: 300	Clinton Elementary School 9-5, St John's,Pfizer	South Pasadena MS,USC Pharmacy, Pfizer, Capacity:200, 2nd dose
	Acton Agua Dulce USD, Mobile Unit, Pfizer	South East HS 9- 4pm, John Wesley Health Institutue, Pfizer,	South East HS 9- 4pm, John Wesley Health Institutue, Pfizer,	Dominquez HS 8:30- 7:30, St John's,Pfizer	South East HS 9- 4pm, John Wesley Health Institutue, Pfizer,	Crenshaw HS 8-5pm, THE Clinic, Pfizer
	Adams MS, Beach Cities District, Pfizer	Magnolia Science Academy (2) 9:30- 3pm, Southern CA Medical Center Pfizer	Esteban Torres 8- 3pm, Planned Parenthood, Pfizer	Clinton Elementary School 9-5, St John's,Pfizer		Dominquez HS 7- 3:30, St John's,Pfizer
				South East HS 9- 4pm, John Wesley Health Institutue, Pfizer,		Clinton Elementary School 9-3, St John's,Pfizer
						Animo Westside Charter MS 8-5pm, St. Johns Mobile Team 2, Pfizer, Capacity:300 1st dose

Summer Programming

- Ongoing planning
 - LA County Parks and Rec
 - Dodgers RBI, Parks after Dark, Free Concerts
 - Training Parks & Rec staff about vaccines
 - Education session for youth followed by vaccine clinics at Our Spot Teen Summit in June
 - LA City Parks and Rec
 - Summer Night Lights
 - YMCA
 - Vaccine clinics planned at nine YMCA locations starting in June
 - Boys and Girls Club Alliance
 - Vaccine clinics planned at four B&GC locations in June
 - Heart of LA

DPH Vaccine Dashboard

<http://publichealth.lacounty.gov/media/coronavirus/vaccine/vaccine-dashboard.htm#selectcity>

Track vaccinations over time with this interactive tool.



12/14/20

05/28/21

[Reset View](#)

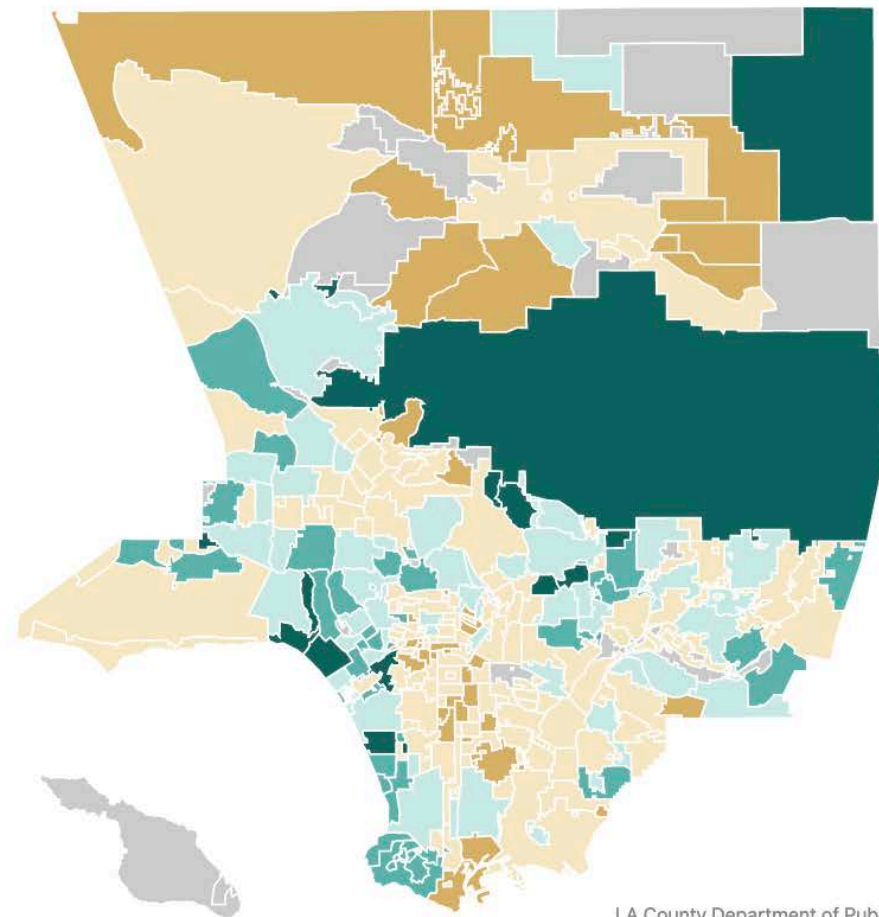
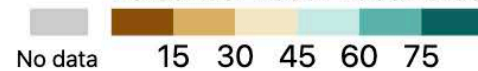
All (16+)

Youth (16-17)

Seniors (65+)

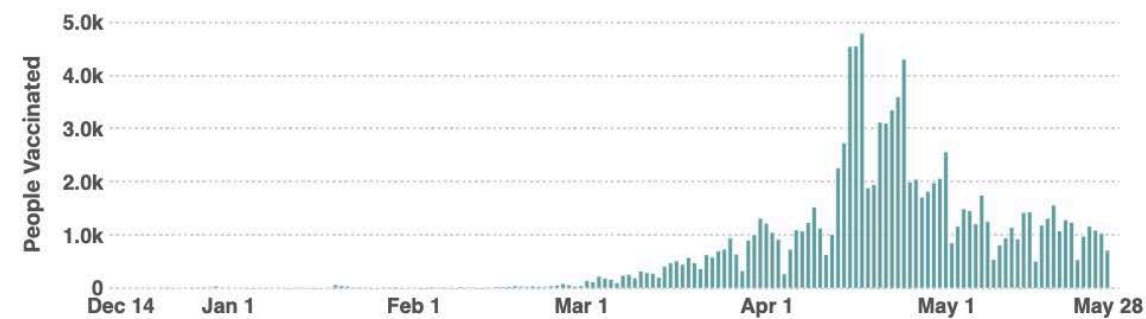
May 28, 2021

Percent of Youth Vaccinated with 1+ Dose

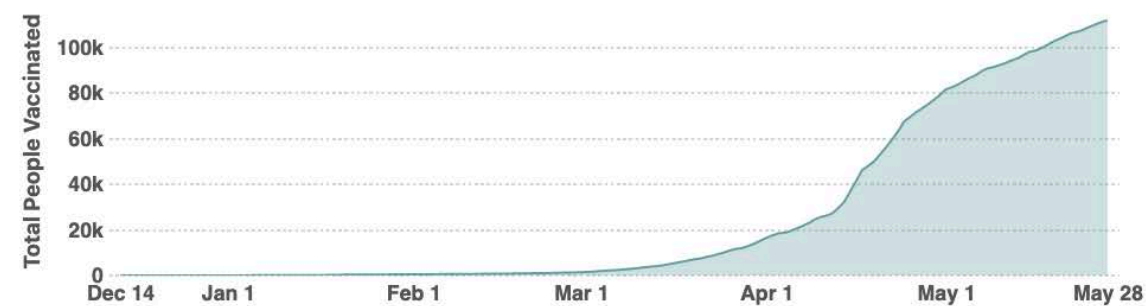


LA County Department of Public Health

Vaccinations by *Click on a bar to view the map on that date.*



Cumulative Vaccinations



Click on regions on the map or use the dropdown menu to update the charts.

Community:

Select all

[Download full time series data \(csv\)](#)

[Save map image \(png\)](#) Shift + Scroll to Zoom

12/14/20

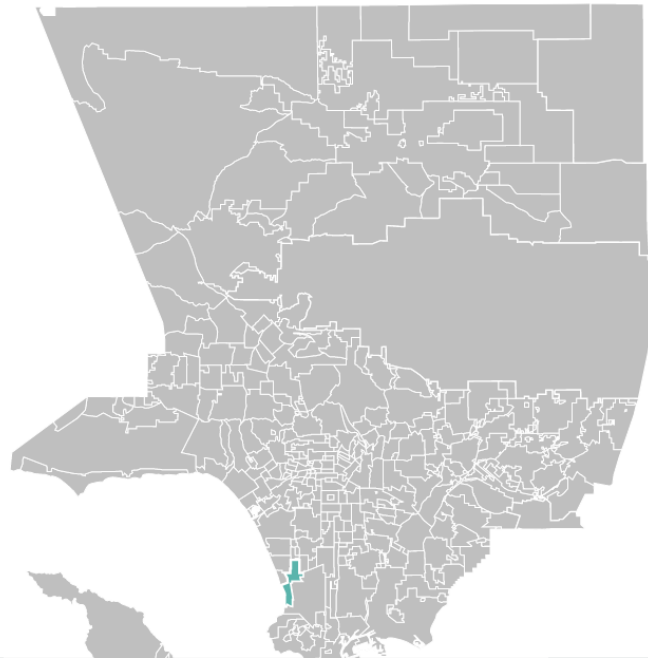
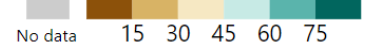
05/05/21

[Reset View](#)

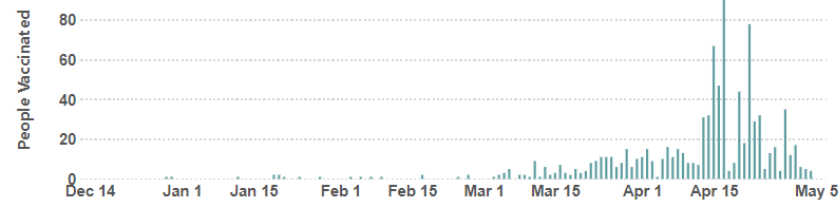
City of Redondo Beach

May 5, 2021

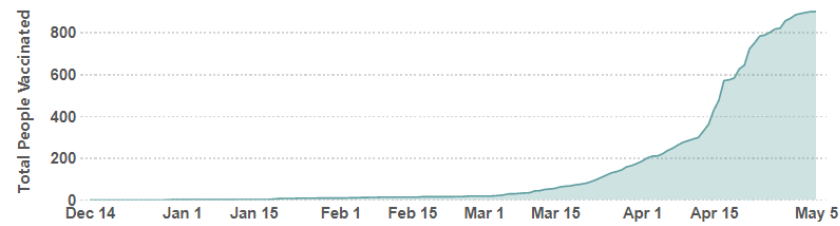
Percent of Youth Vaccinated with 1+ Dose



Vaccinations by [Click on a bar to view the map on that date.](#)



Cumulative Vaccinations



Click on regions on the map or use the dropdown menu to update the charts.

Community: [Clear selection](#)

City of Redondo Beach

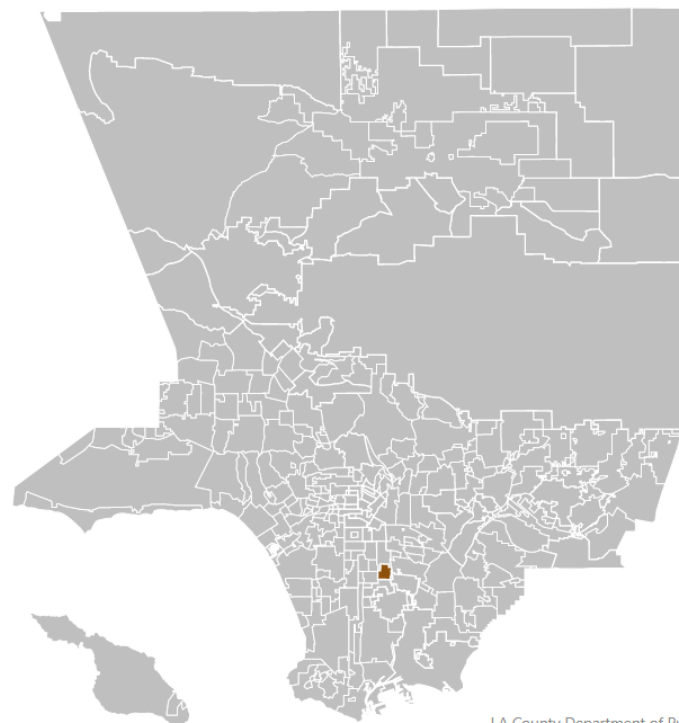
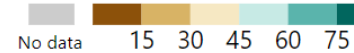
[Reset View](#)

Vaccine events after outbreaks

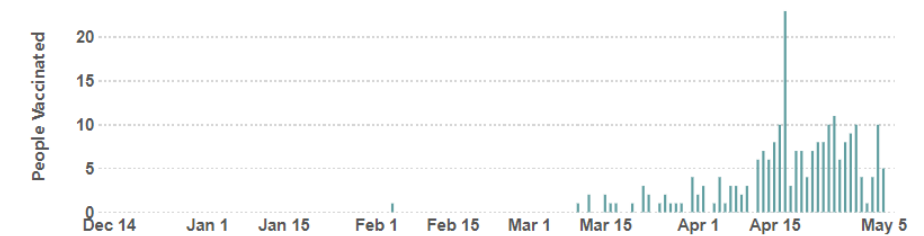
Los Angeles - Watts

May 5, 2021

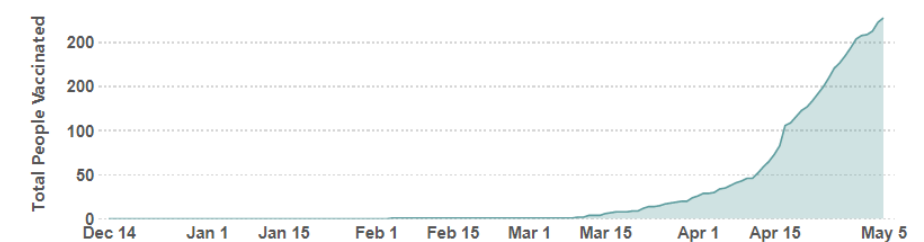
Percent of Youth Vaccinated with 1+ Dose



Vaccinations by [Click on a bar to view the map on that date.](#)



Cumulative Vaccinations



Click on regions on the map or use the dropdown menu to update the charts.

Community: [Clear selection](#)

Los Angeles - Watts

**Two-Week Case Incidence, Hospitalization, and Death Rates per
100,000 People and Cumulative Percent Vaccinated
by Race/Ethnicity
May 9 - May 22, 2021**

Race/ Ethnicity	Case Incidence Rate	Hospitalization Rate	Death Rate	% With ≥1 Vaccine
Black	37	7.98	0.74	41%
Latino	22	6.57	0.62	48%
White	17	4.18	0.34	63%
Asian	8	1.46	0.28	71%



Who isn't getting vaccinated?

Percent of LA County Residents With At Least 1 Dose of Vaccine as of May 28, 2021

	12-15	16-17	18-29	30-49	50-64	65-79	80+
Black/African American	10	21	24	35	49	66	59
Latinx	12	32	37	45	61	75	57
American Indian/Alaska Native	23	41	53	61	54	71	66
White	28	51	54	60	58	82	71
Asian	34	67	70	69	71	82	66



Benefits of vaccine

- Skip quarantine following a known exposure if asymptomatic
- Skip screening testing
- Take part in outdoor activities and recreation without mask except for crowded settings
- Travel without pre/post testing and quarantine in the US
- Protect your loved ones
- Protect yourself

VACCINATE LA COUNTY

**DON'T WAIT
TO VACCINATE**

EVERYONE 16+ IS ELIGIBLE

BENEFITS OF BEING FULLY VACCINATED:



Travel with less restrictions on testing and quarantine



Provide additional protection to loved ones



Enjoy more activities with friends and family without fear



LA County can reopen faster, safer, and stronger

Find a location near you at [VaccinateLACounty.com](https://www.vaccinatelacounty.com)



COUNTY OF LOS ANGELES
Public Health

COVID-19

The Risk is Still Real:

Teenager COVID-19 Vaccine PSA

El riesgo sigue siendo real:PSA de la
vacuna COVID-19 para adolescentes

Noelani and Monica Alcaraz

Partner Updates

Actualizaciones
de socios

CA Low Cost Auto Insurance

Seguro de auto de bajo costo en CA

Sally Kim, California Department of Insurance



**CALIFORNIA'S
LOW COST
AUTO INSURANCE**



- State program
- Liability Auto Insurance
- Must qualify (low to moderate income)
- Good or New Drivers
- Premium is under \$500 for “good” drivers

- www.MyLowCostAuto.com
- 866-602-8861
- Watch YouTube video
- <https://www.youtube.com/watch?v=uRGVJaxuZ7k&t=2s>
- For Outreach and materials contact Sally Westlake
sally.kim@insurance.ca.gov

Next Meeting:
Friday, July 2, 2021

Próxima reunión: viernes
2 de julio de 2021

www.hicpla.org

HHEALTH
IINNOVATION
CCOMMUNITY
PPARTNERSHIP