

HHEALTH
IINNOVATION
CCOMMUNITY
PPARTNERSHIP

Welcome!

For the best meeting experience, please:

- Mute your microphone unless speaking
- Enable your camera
- Click on the interpretation button to select your language of choice
- Please note – this meeting is being recorded

¡Bienvenidos!

Para la mejor experiencia de reunión, por favor:

- Silencia tu micrófono a menos que estés hablando
- Habilita tu cámara
- Haga clic en el botón de interpretación para seleccionar el idioma de su elección
- Tenga en cuenta - esta reunión se está grabando

HEALTH INNOVATION COMMUNITY PARTNERSHIP

Monthly Meeting

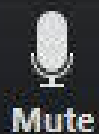
Reunión mensual



Tech Tips for Zoom Meetings

Consejos técnicos para reuniones de Zoom

- This meeting is being recorded and will be posted to the hicpla.org website
 - All attendees – please mute yourself unless you are speaking!
 - Turn your audio and video on or off by clicking the microphone or camera.
 - Click the “Raise Hand” button if you want to ask a question
 - Type questions in the Chat
 - Interpretation allows you to attend in your language of choice.
- Esta reunión se está grabando y se publicará en el sitio web hicpla.org
 - Todos los asistentes tendrán que ponerse en silencio a menos que estén hablando directamente con un presentador
 - Encienda o apague su audio y video haciendo clic en el micrófono o la cámara.
 - Haga clic en el botón "Levantar la mano" si desea hacer una pregunta.
 - Escribe preguntas en el Chat
 - La interpretación le permite asistir en el idioma de su elección.



Mute



Stop Video



Invite



Participants



Share



Chat



Record



Interpretation



More

End Meeting

Agenda

8:45	Meeting Overview, Guiding Principles and Announcement	Resumen de la reunión, principios rectores y anuncio
8:50	LAC+USC Medical Center Update	Actualización del Centro Médico LAC + USC
9:00	US Department of Justice Report	Informe del US Departamento de Justicia
9:20	General Hospital-West Campus Update	Actualización del Hospital General-Campus Oeste
9:35	Restorative Care Permanent Supportive Housing Update	Actualización de Vivienda de Apoyo Permanente de Cuidado Restaurativo
9:55	Local Housing Developments: 3 rd and Dangler and 3 rd and LaVerne	Desarrollos de viviendas locales: 3rd y Dangler y 3rd y LaVerne
10:25	Community Conversation on Civic Leadership	Conversación comunitaria sobre liderazgo cívico
10:35	Partner Announcements	Anuncios de socios

HICP Guiding Principles

(from our Vision
and Mission
document)

1. All participants agree to basic principles prioritizing equity, community resilience, and health in all programs and projects.
2. All participants agree to approach issues with an open mind, be willing to engage in dialogue, and commit to thinking boldly about solutions.
3. Participants will state views and ask genuine questions.
4. Participants will seek to avoid monologues and arguments; move to conversations where participants are curious and seek to understand various points of view.
5. Participants will explain reasoning and intent; share how we reach our conclusions so that others can understand our divergent reasoning.
6. Participants will attack the problem and not the person, organization, or institution.
7. Participants will define key terms so that we can attain a shared understanding.
8. Participants will share all relevant information.
9. Participants will always arrive prepared for the meeting.
10. During meetings, only one person speaks at a time; we will not engage in sidebar conversations.
11. Participants will work to develop a comprehensive, common set of information with which to solve problems and make decisions.
12. Participants will jointly design next steps.

LAC+USC

LAC+USC Medical Center
Update

**Actualizaciones del Centro
Medico de LAC+ USC**

Edgar Solis, Chief Operating Officer

LAC+USC Medical Center Updates

Health Innovation Community Partnership (HICP) Meeting
Friday, December 2, 2022



COVID Update



World AIDS Day Health Fair

Join us!

Free HIV Testing

Date: **Friday, December 2nd, 2022**

Time: **10am – 2pm**



PUTTING OURSELVES TO THE TEST:
ACHIEVING EQUITY TO END HIV

FRIDAY, DECEMBER 2
10AM-2PM LAC+USC COURTYARD

RAFFLES - ENTERTAINMENT - RESOURCES - FOOD - MUSIC - AND MORE!

Ceremony of the Unclaimed Dead Virtual Ceremony

Date: **Thursday, December 8th, 2022**

Time: **10 a.m.**

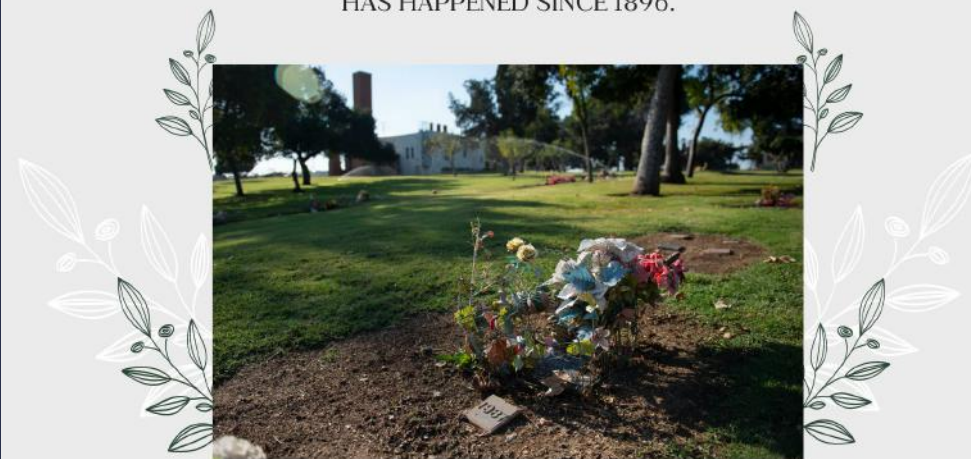
Facebook at <https://www.facebook.com/lacusmedical/>

Livestream: https://www.facebook.com/lacusmedical/live_videos/



WE REMEMBER THOSE WHO DIED IN 2019 AND NOW BEING BURIED IN 2022.

THE COUNTY OF LOS ANGELES BURIAL OF THE UNCLAIMED DEAD SERVICE
HAS HAPPENED SINCE 1896.



Virtual Ceremony
THURSDAY, DECEMBER 8TH, 2022
10 a.m.

Facebook at <https://www.facebook.com/lacusmedical/>
Livestream: https://www.facebook.com/lacusmedical/live_videos/



Questions & Answers



Thank you!



Safety

La seguridad

U.S. Department of Justice Report:
United Against Hate Program

**Informe del Departamento de
Justicia: Unidos contra el odio**

*Matthew Barragan, Assistant United States
Attorney, Civil Rights Division*

Ari Gutierrez-Arambula, Latino Equality Alliance

LAC+USC

General Hospital and West Campus RFP Project Update

Actualización del proyecto del hospital general y west campus RFP

*Rosa Soto, LAC+USC Medical Center
Foundation/The Wellness Center and
Albert Sou, LA County Department of Economic
Opportunity*

General Hospital and West Campus Update



Presented by:
Rosa Soto
LAC+USC Medical
Center Foundation, Inc.
&
Albert Sou
Department of Economic
Opportunity

Community Priorities Advisory Committee

Committee will review, assess, and summarize current **community guidance documents** from the Health Innovation Community Partnership and General Hospital Feasibility Study to **deliver a concise summary of community priorities** related to the General Hospital and West Campus Reuse to inform **future opportunities** related to the site.

- Thank you to everyone who applied!
- Our Committee members have been selected and will work through December 16th to deliver a summary report to the project team



Community Engagement Next Steps

Reimagine the future of General Hospital
and West Campus at LAC+USC

Industry Day

December 14, 2022
1:00 - 3:00 PM

LAC+USC Medical Center
Historic General Hospital

Please RSVP to hdelgado@actumlhc.com
by December 10

Join Los Angeles County
Supervisor Hilda L. Solis at
the General Hospital-West
Campus Industry Day
to learn more about
development opportunities
on the campus for this
iconic piece of
Los Angeles history.

Hosted by Los Angeles County
Supervisor Hilda L. Solis, the
Los Angeles County Chief Executive
Office, the Los Angeles County
Department of Economic
Opportunity, the Los Angeles
County Department of Health
Services and the Los Angeles
County Department of
Public Works.



Our First General Hospital-West Campus Industry Day will be December 14

- Excite interest in project among the developer and investor communities and the public at large.
- Highlight history, scope, scale of building
- Embed community voice/perspective as a key element of the project's intention and success.
- Second event will be Jan-February 2023



Thank You!

For more information, please contact

Heather Hays

Heather@TheWellnessCenterLA.org

Community
Stability

Estabilidad
Comunitaria

Restorative Care Village Permanent
Supportive Housing

Aldea de Cuidado Restaurativo
Vivienda de Apoyo Permanente

*Oscar Alvarado and Gilbert Gonzalez, Century
Housing*

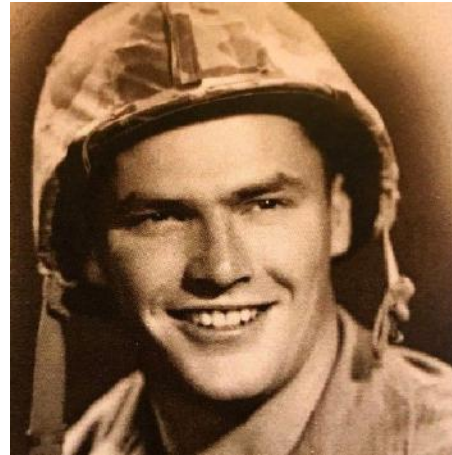


Housing Innovation Community Partnership

Introducing Century LAC + USC Project Design Approach

December 02, 2022





ABOUT CENTURY

Headquartered in Los Angeles, Century's mission is to invest in homes and communities so that low-income individuals and families may have a dignified living environment, achieve economic independence, and enjoy beautiful and vital places to live and work.

Unique Story



Founded in 1995, Century Housing is a local mission-driven 501(c)(3) nonprofit organization that finances and develops affordable housing. Roots in EJ.

Financial Strength



Century has invested >\$2.0 billion of capital that has resulted in the creation of more than 47,000 new affordable homes in California. Century is one of a handful of S&P rated Community Development Financial Institutions (CDFI) in the Nation.

Vertically-Integrated Operations



Century brings an integrated solution to our PSH assets, braiding real estate development, property management, residential services, and community engagement together with a common purpose.

AA Rated
Fitch Ratings

AA- Rated
S&P Global

Sustainability
Bond Issuer by
Bloomberg

Fitch Bank
San Francisco
Member

ABOUT



For over 40 years, GGA+ has been dedicated to creating built environments that reinforce social connection and enrich public life. The potential to amplify the human connection drives us to design with both passion and optimism.

Thriving communities are what great cities are made of places that are built upon the power of human experience. From new public schools in urban Los Angeles, to college campuses, to hillside residential communities for the formerly homeless, our designs are deeply rooted in community.

As recognized leaders in housing design, our studio has developed more than **3,000** units of affordable and permanent supportive housing for families, seniors, and veterans and over **1,200** beds of transitional and bridge housing for individuals experiencing homelessness.



LA Family Housing
"The Campus"



Rancho Los Amigos Restorative Care Village



Summit View Permanent Supportive Housing



'los Lirios' Boyle Heights
Affordable Housing

Doing Good with **Great Design**



LA River Revitalization



ABOUT STUDIO-MLA

Studio-MLA is a design advocacy firm focused on landscape architecture, urban design and systemic thinking to address complex relationships found within the urban and natural landscape.

The studio is involved in several transformative urban projects within Los Angeles County and is located in the Community of Boyle Heights on Mission Road very near LAC + USC.

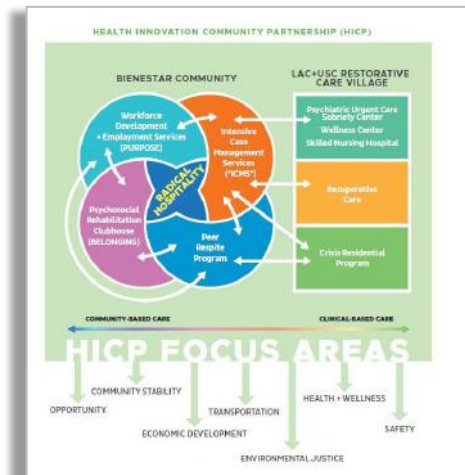
Studio-MLA is deeply committed to issues of ecological equity in Los Angeles and access to landscape including revitalization of the LA River, shading and greening of school yards, and restorative justice through design and programming that strengthen economic, social, and environmental health in underserved communities.



Destination Crenshaw

LAC + USC: HICP Focus Areas

HICP Focus Areas	Bienestar Alignment
Opportunity	300 affordable homes; local hire, community serving indoor/outdoor spaces
Community Stability	Transformation of underutilized site with permanent housing designed with placemaking architecture and urban design.
Economic Development	Workforce development, construction and permanent jobs, training
Transportation	Will seek AHSC funds to enhance connections to local bus lines and improve multimodal connections to the LAC +USC Medical Center and neighboring communities. Concept includes a shuttle/vehicular drop off on Eastlake.
Environmental Justice	Reduce GHG emission via improved access to transit and reduced car trips. LEED or equivalent certifications. Focus on air quality thru mechanical systems and landscape choices.
Health & Wellness	Peer respite program; linkages to LAC + USC medical center, onsite resident services, restorative outdoor spaces.
Safety	Improved lighting, sidewalks, crosswalks for bike and pedestrian access to LAC + USC medical Center. Design for defensible spaces.



LAC + USC: HOUSING PROGRAM



Our response maximizes the use of the site given site adjacencies and the immediate availability of amenities and services in the broader LAC+USC RCV community

Up to 300 homes

In two distinct buildings. Three to six stories in height.

Half for low income seniors

150 apartments for persons 62+ earning between 30% and 60% AMI

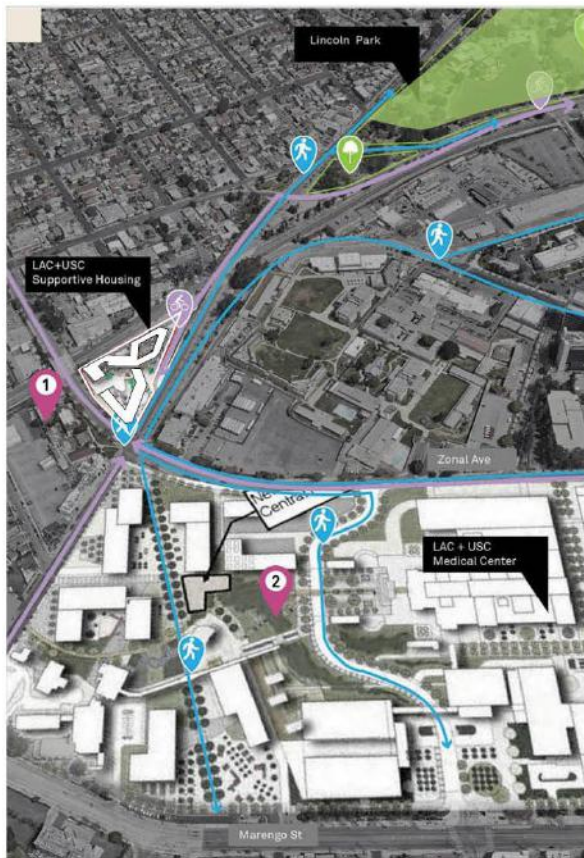
Half for formerly homeless

150 apartments for formerly homeless persons meeting the No Place Like Home program guidelines, eligible for ICMS.

Studio and 1-bedroom homes

Can adapt to various populations, including individuals and small households.

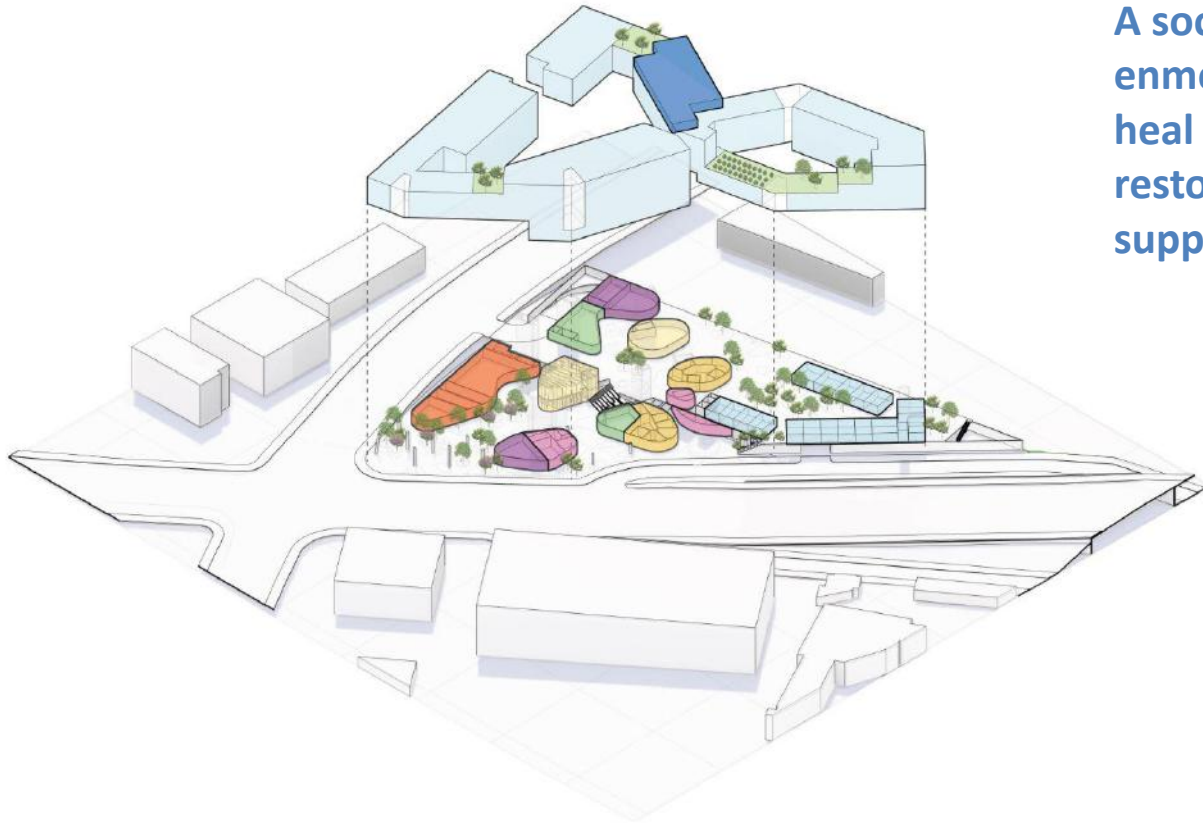
LAC + USC: WHOLE HEALTH INFRASTRUCTURE



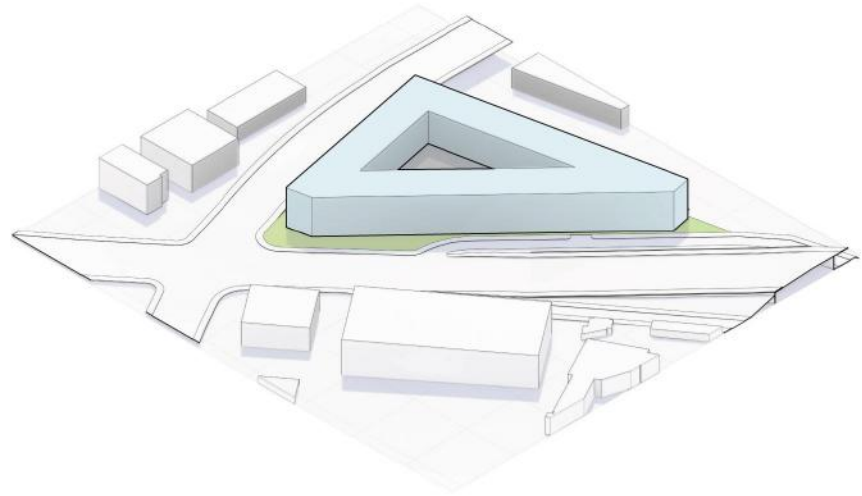
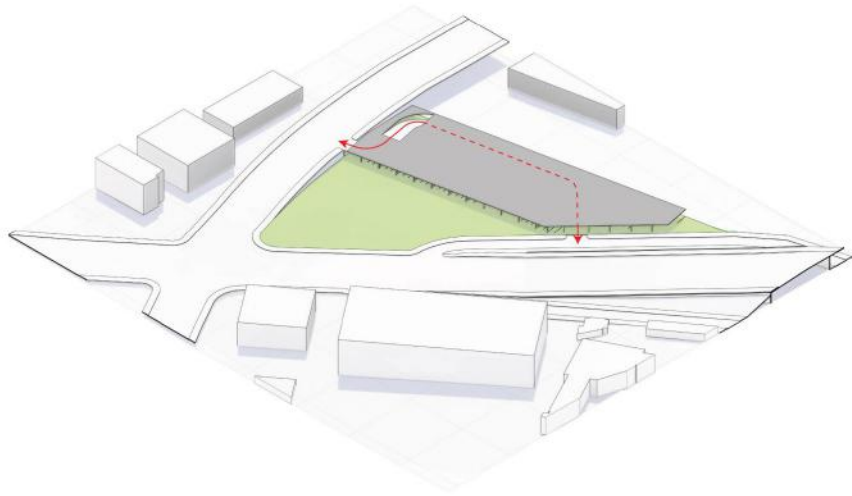
Woven into the fabric of the LAC+USC Restorative Care Village, LAC + USC is a vision for a holistic community that is designed for Wellness, Recovery, and Finding Purpose

LAC + USC: DESIGN VISION

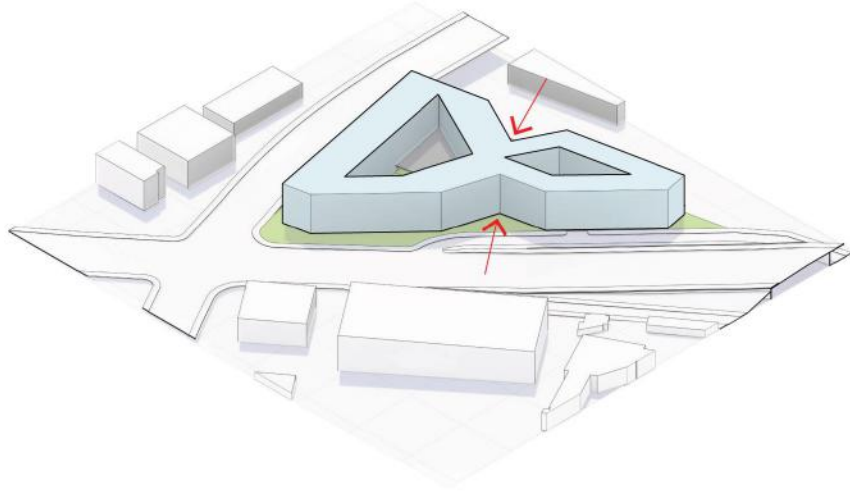
A socially woven livable place
enmeshed in helping people
heal through holistic and
restorative environments
supporting one's whole health



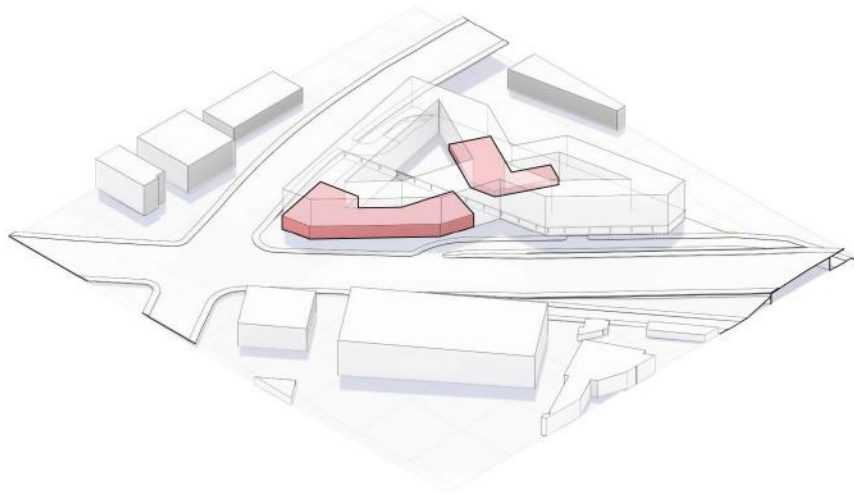
LAC + USC: CONNECTING BUILDING AND LANDSCAPE



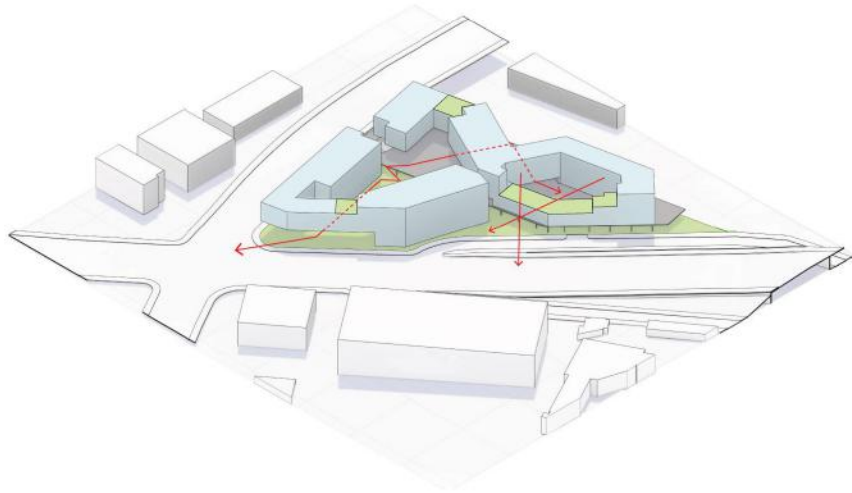
LAC + USC: OPEN SPACE DIVERSITY



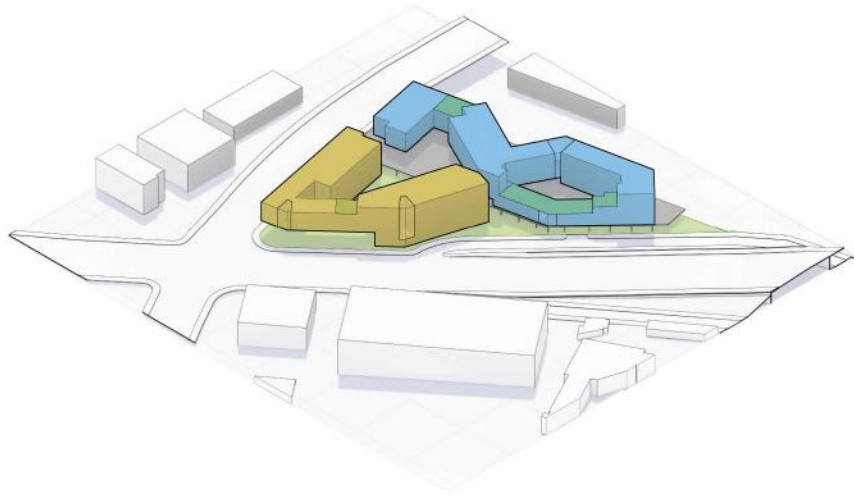
LAC + USC: SHADE: PORCHES & LOGGIAS



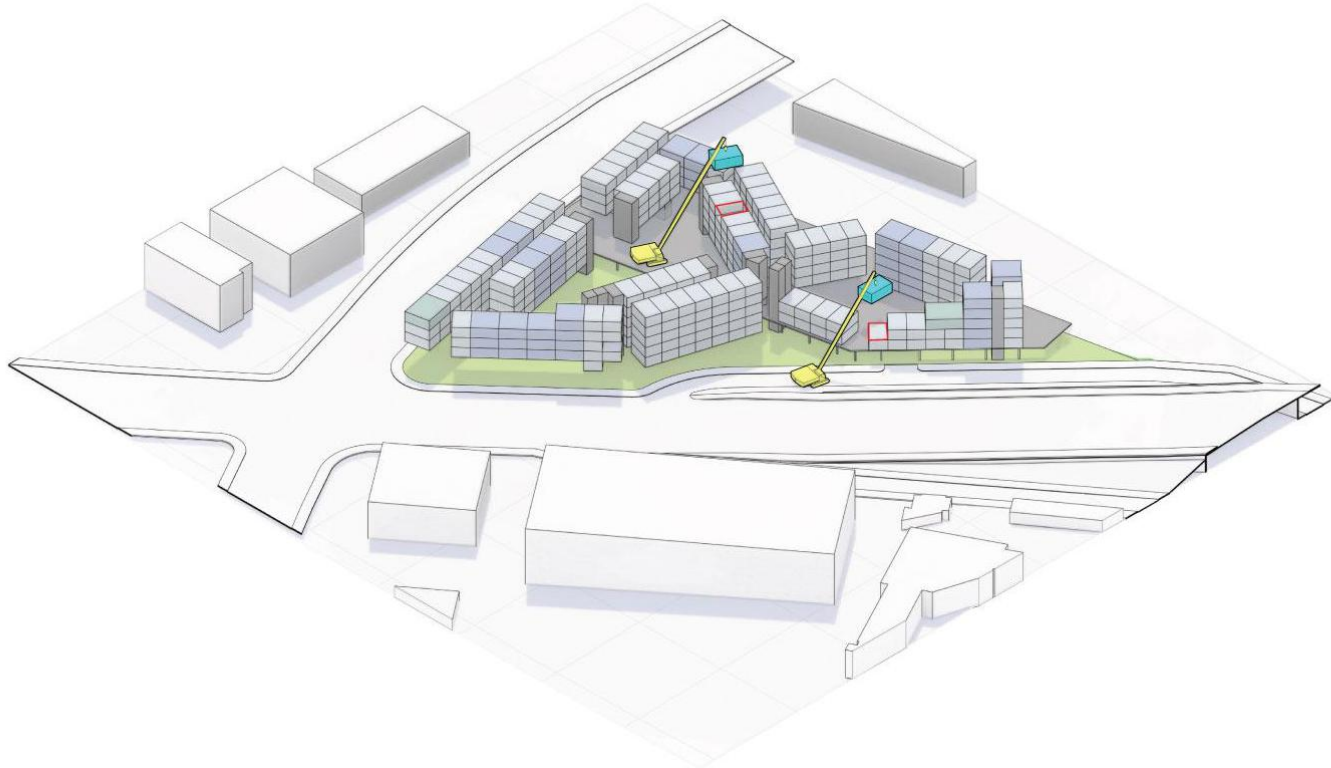
LAC + USC: LIVING TERRACES & GARDENS



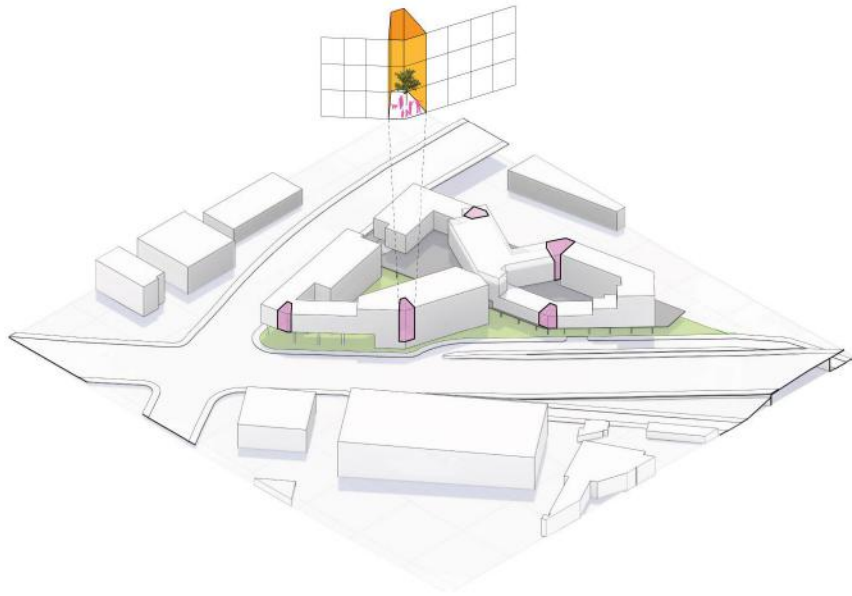
LAC + USC: TWO PHASES / 1 PROJECT



LAC + USC: MODULAR EFFICIENCY + EXPEDIENCY



LAC + USC: PUBLIC ART & GARDENS



LAC + USC: GROUND FLOOR PLAN



LAC + USC: SECOND FLOOR PLAN



LAC + USC: SECTION: From Rail Tracks to Mission

- (A) RESIDENTIAL UNITS
- (B) URBAN PORCH
- (C) COMMUNITY BRIDGE
- (D) CENTRAL COURTYARD
- (E) SOCIAL PERCH (BEYOND)
- (F) COMMUNITY ROOM (BEYOND)
- (G) GRAND STAIR
- (H) COMMUNITY TERRACE
- (I) PARKING
- (J) SENSORY GARDEN WALK
- (K) RAILROAD TRACKS
- (L) WORKFORCE PROGRAMMING (BEYOND)
- (M) PEER RESPITE SUPPORT
- (N) NORTH MISSION ROAD
- (O) STORAGE



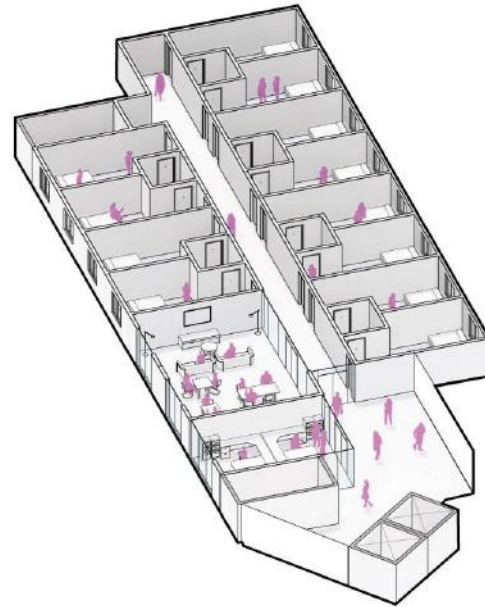
LAC + USC: SOCIAL PROGRAM

Peer Respite: Project Return Peer Support

Successful track record as a partner of
Century

12 bed program

Located on private floor within the
project with a distinct entry, staffing,
and common space



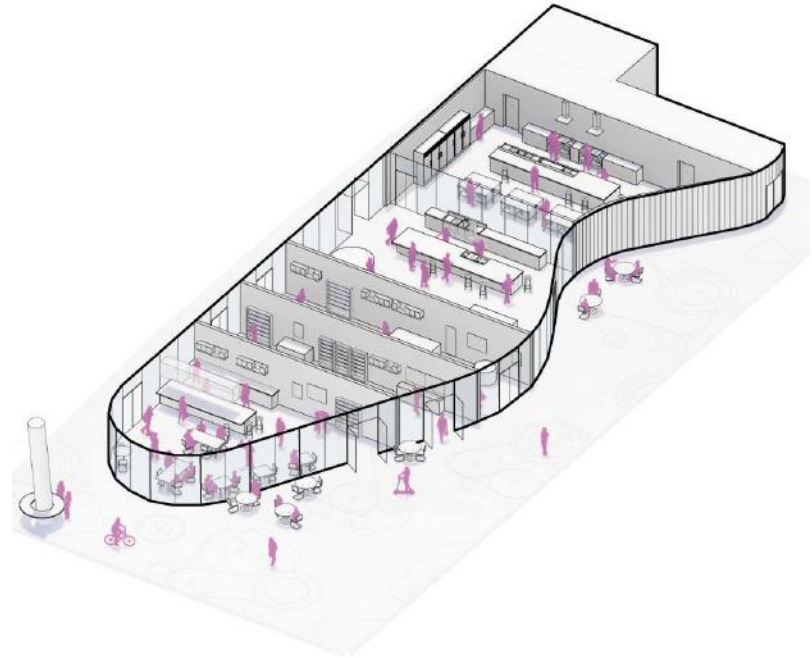
LAC + USC: SOCIAL PROGRAM

Workforce Development: LA Habitational House

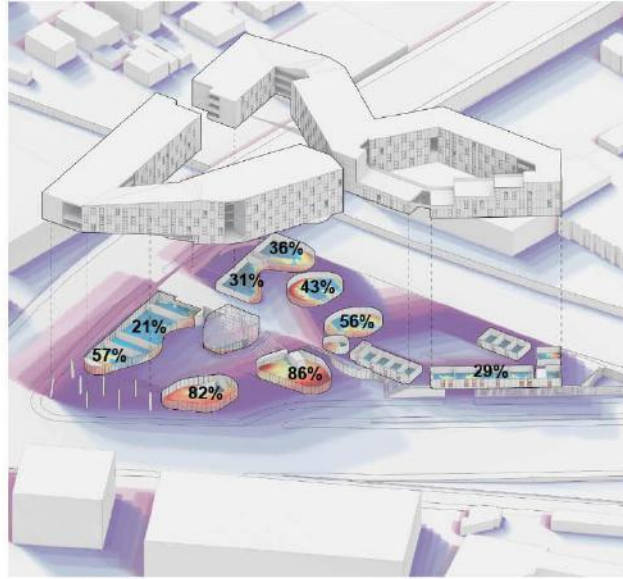
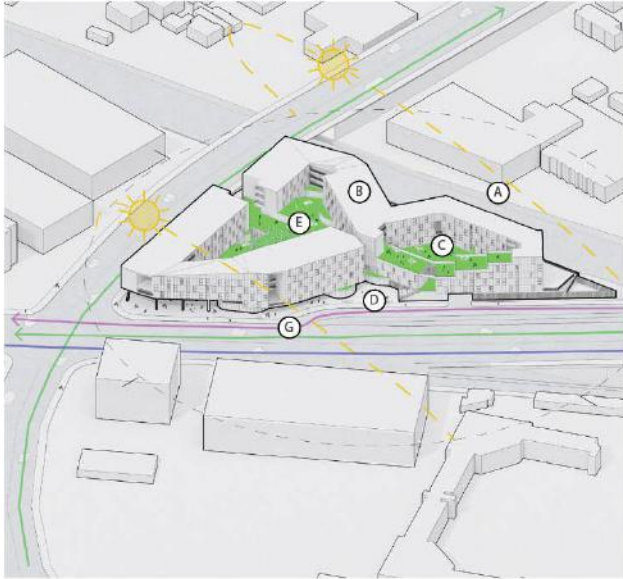
Successful track record as a partner of
Century

6,000 Square Foot Program Social
Enterprise- Pasta Making, retail storefront.

Job training, Career Development,
overcoming barriers.



LAC + USC: SUSTAINABLE COMMUNITY

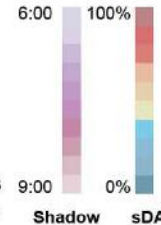


SUSTAINABILITY MEASURES

- (A) CARBON REDUCTION - Modular/Offsite Fabrication
- (B) ENERGY - PV Solar Array (typical at rooftop)
- (C) ENERGY - Daylighting & Natural Ventilation (windows at front + back of unit)
- (D) CARBON REDUCTION - Multimodal Transportation
- (E) HEAT REDUCTION - Greening / Landscape
- (F) ENERGY - All Electric Building Systems (HVAC & DHW)
- (G) ENERGY - Naturally Ventilated Exterior Corridors and Building Circulation

DAYLIGHTING & SHADE

Using spatial daylight autonomy (sDA) it shows the first-floor support spaces and podium level residential are receiving ample daylight. Also, reviewing the building shade analysis during summer months the courtyards will receive many sun hours. This high level of daylighting was provided through specifically located terraces and internal courtyards. In addition, this shading provides a place of respite from the sun, activating the interstitial spaces through a set of urban porches and loggias.



LAC + USC: Homes, Health, Purpose



LAC + USC: Timeline



Select major milestones listed below. Team has 180 days + 2 extensions available to negotiate a Development Agreement/ Lease with LACDA



LAC + USC: Next Steps



- Engage with HICP committee or working group to take input on design, housing and social service program and larger neighborhood and LAC+USC considerations
- Engage with Local Stakeholders including Neighboring Community groups to solicit input on program and design.
- Draft a outreach plan for LACDA Review
- Meet with Regional Planning to discuss path to entitlements and environmental clearances
- Refine program, design and project pro formas for LACDA approval

THANK YOU

Brian D'Andrea
bdandrea@century.org

Oscar Alvarado
oalvarado@century.org



WWW.CENTURYAFFORDABLE.ORG

WWW.CENTURYAFFORDABLE.ORG/RESTORATIVECAREVILLAGE

LAC+USC
Restorative Care
Village
Permanent
Supportive
Housing Update

**Actualización
de vivienda de
apoyo
permanente de
LAC+USC
Restorative
Care Village**

Join the HICP sub-committee to provide feedback on this project!

- As part of the outreach efforts, Century is looking for HICP members to be part of a subcommittee to provide feedback on this proposed development. If you are interested, please put your name and email in the chat, or email info@hicpla.org
- Como parte de los esfuerzos de divulgación, Century está buscando miembros de HICP para que formen parte de un subcomité para brindar comentarios sobre este desarrollo propuesto. Si está interesado, ingrese su nombre y correo electrónico en el chat, o envíe un correo electrónico a info@hicpla.org

Community
Stability

Estabilidad
Comunitaria

Local Housing Developments: 3rd
and Dangler and 3rd and LaVerne

**Desarrollos de viviendas locales:
3rd y Dangler y 3rd y LaVerne**

Cynthia Mejia, National CORE

Stephanie Medina, Local Artist

Megan Colvard, PATH



Las Dahlias Affordable Housing (3rd & Dangler)

CYNTHIA MEJIA, NATIONAL CORE



HOPE through HOUSING
120116-01-2014

Agenda



INTRODUCTION



DEVELOPMENT
SUMMARY



TIMELINE



CONSTRUCTION
SCHEDULE



COMMUNITY
BENEFITS



ART UPDATE

National CORE

- Founded in 1992
- Total Units: 10,000
- Total Residents: 30,000
- Nation's 4th Largest Nonprofit Affordable Housing Developer
- Full-Service Organization

WHAT WE DO

DEVELOP

Find creative solutions for financing, designing, and managing developments that foster community change

BUILD

Construct and rehabilitate innovative, safe, and green housing solutions

MANAGE

Maintain and manage properties once development is complete

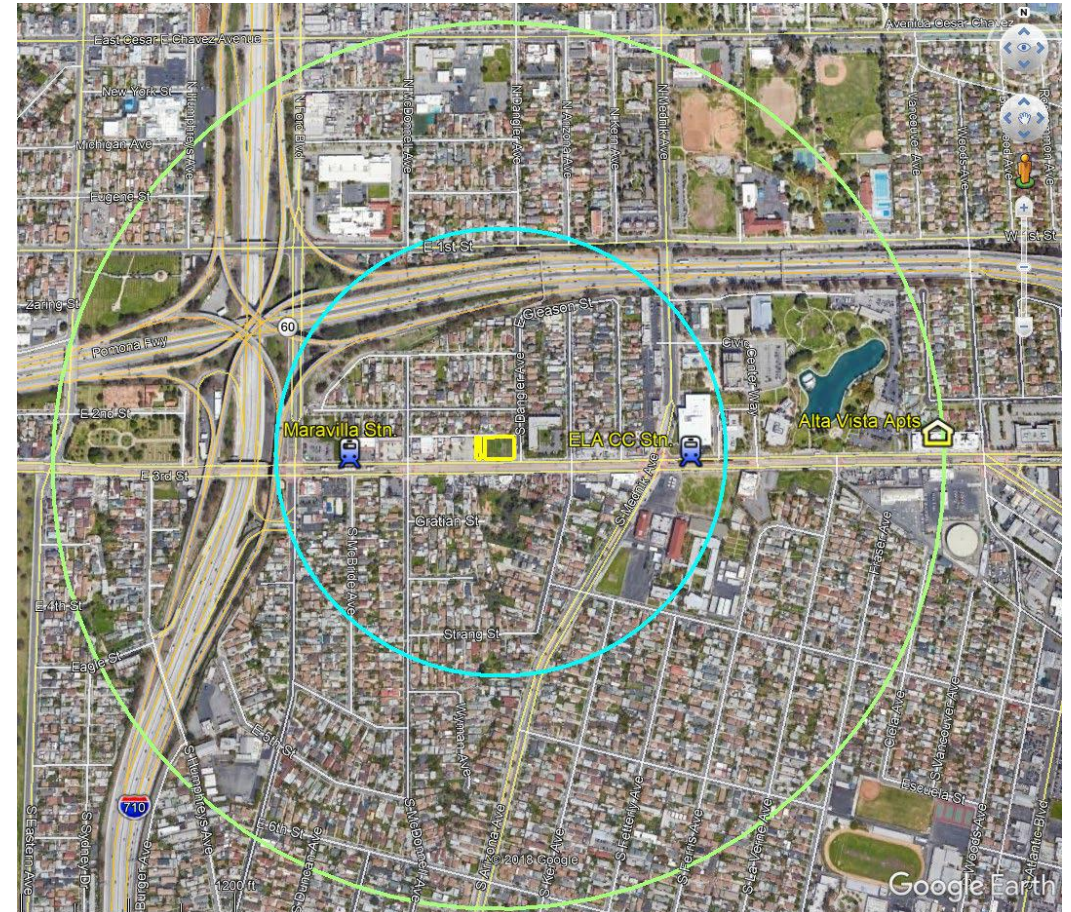
SERVE

Provide high quality social services for individuals, families, children, and seniors



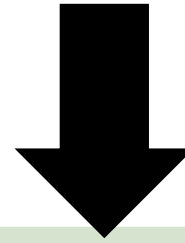
Las Dahlias (formerly known as 3rd and Dangler)

- 3rd Street and Dangler Avenue
- 78 units (20 studios, 49 1bds, 9 2bds)
- 39 Permanent Supportive Housing Units
 - In partnership with PATH
- Onsite Amenities:
 - Community Room
 - Tot lot playground
 - Rooftop garden
 - Bike parking and programming
 - Public forecourt plaza
 - Local Artist Mural
 - Pocket park
 - Onsite parking
 - Robust onsite services





Development Timeline



September
2019
Exclusive
Negotiating
Agreement

2019-2020
Community
Engagement
and Local
Approvals

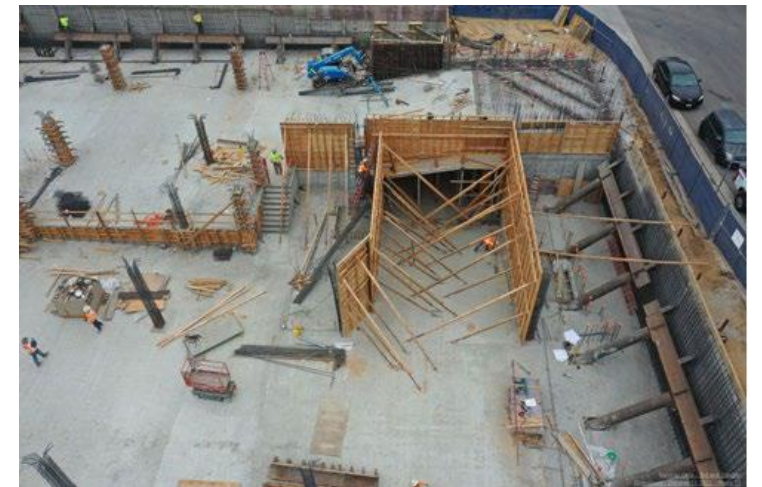
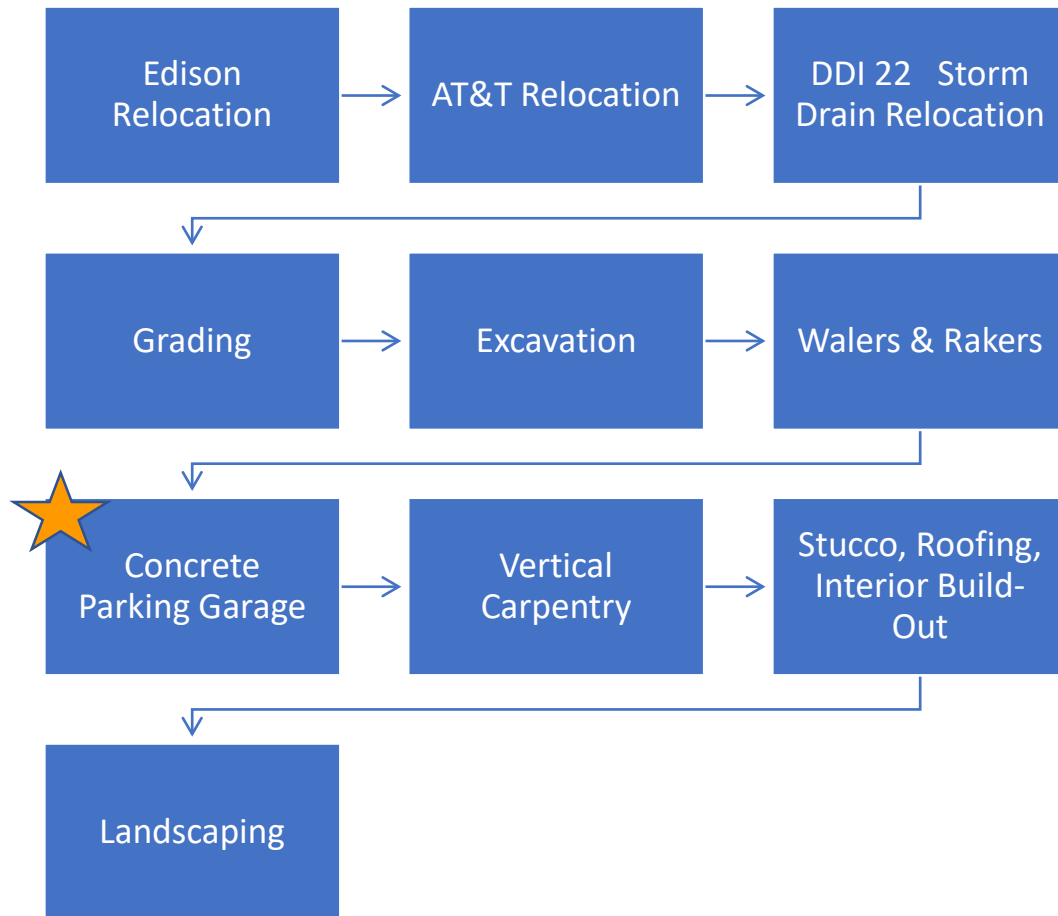
2020
Financing
Applications

2021-2023
Construction

Mid 2023
Marketing and
Leasing
Applications

Late 2023
Construction
Completion

CONSTRUCTION SCHEDULE





Community Benefits

- Revitalization of a vacant site along the Metro gold line
- 78 deed-restricted affordable housing units; 39 set aside for PSH
- Onsite subterranean parking
- On- and off-site infrastructure improvements
- Direct and indirect jobs during construction and operations
- Robust onsite supportive services
- Technology lab space
- Community room
- Pocket park
- Local art mural
- Local hiring
- Early leasing information workshops
- Community Benefit Agreement

Community enefit Implementation



Local Hire

Ongoing outreach to stakeholders; subcontractors and reporting



Pocket Park

Outreach, design, programming



Local Notification

Planning + coordination with partners, workshops in Spring



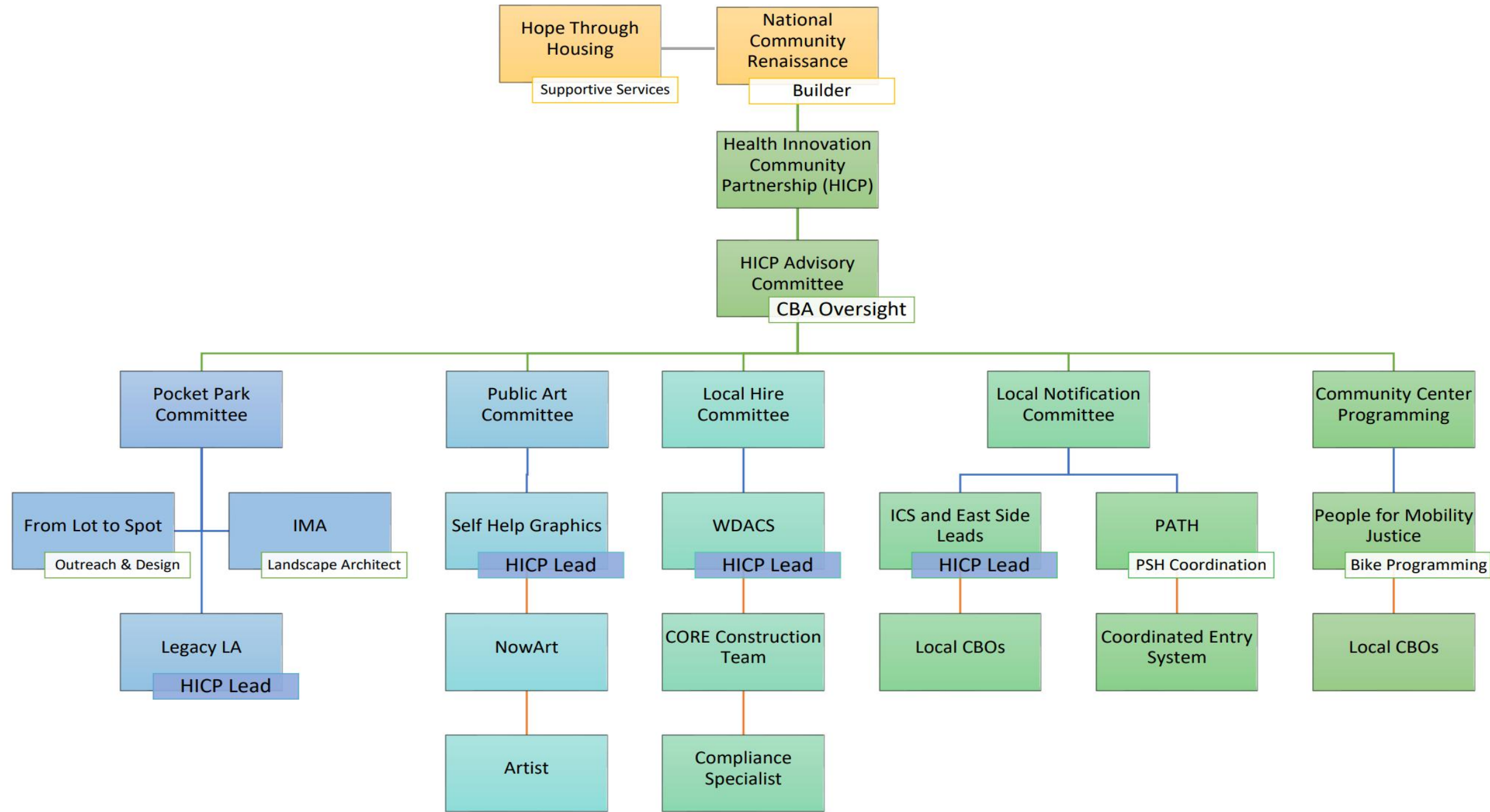
Local Art

Artist selected, engagement conducted, design finalized

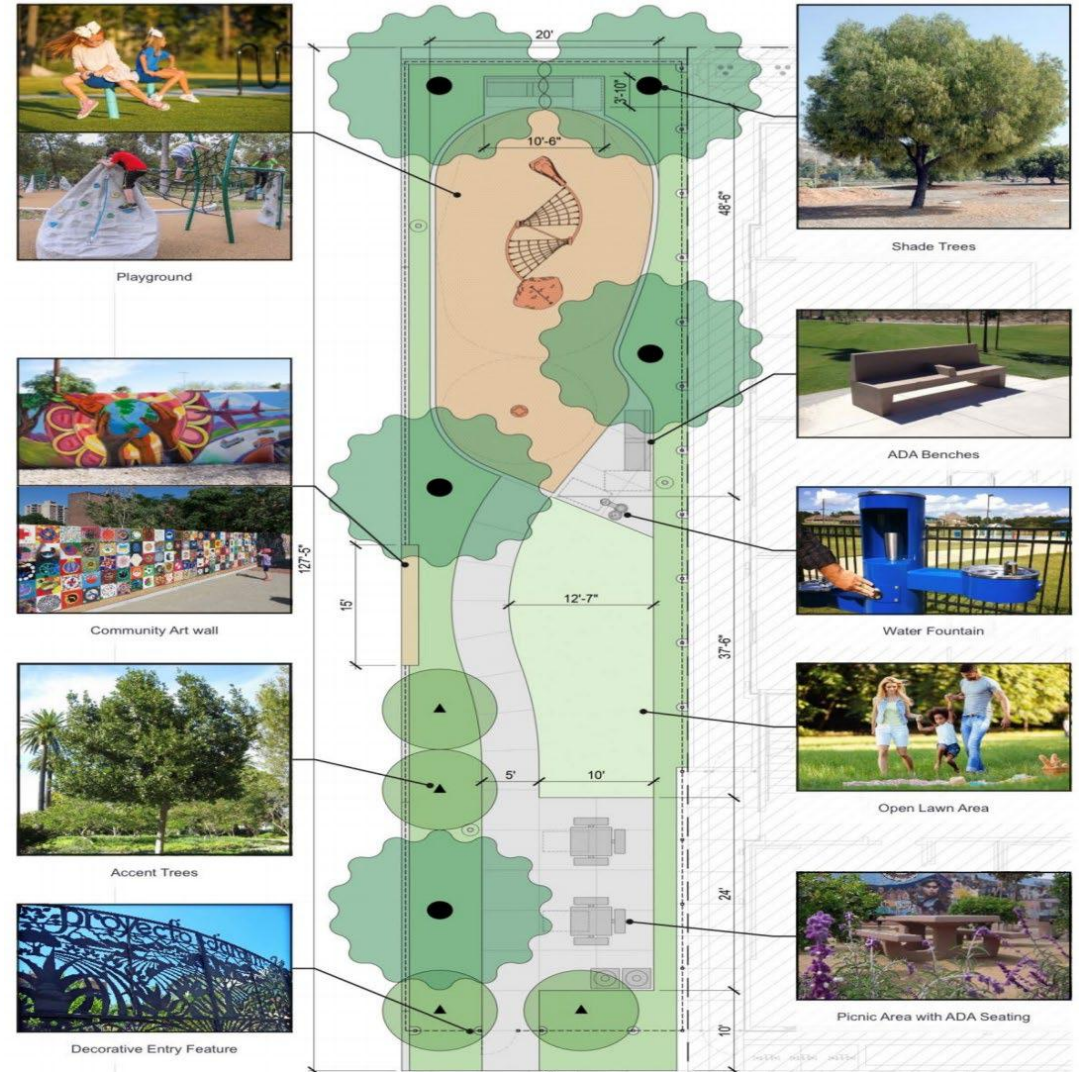


Onsite Community Room Programming

Planning + coordination this winter – spring, agreements in the summer



Pocket Park



Local hire

- LA Housing Compliance & Power 2 Workers overseeing local hire goals and requirements
- Reporting to HICP Targeted Worker monthly meeting
- Ongoing engagement with schools, colleges, CBOs, subcontractors

Eligible Candidates

	Total Candidates	Ready to Work
Within 2-mile radius	52	15
Within LACDA 5-mile radius	131	19
Within LACDA high unemployment Zip codes	385	42

Local Art

- Now Art Coordinating Mural Process
- RFQ for artist selection
 - Modified requirements to make it more inclusive, focused on ELA, and open to emerging local artists
- 3 top finalists
- **Stephanie Mercado, selected artist**
- Mural installation to take place promptly after the development is completed



Stay up to date!



Las Dahlias Apartments will be a vibrant transit-oriented development offering 78 affordable apartment homes in the heart of East Los Angeles for individuals and families with household income qualifying maximums at various set asides ranging from 30 to 60 percent of applicable area median income (AMI). Thirty-nine of the apartment homes will be reserved for individuals and families who are experiencing homelessness. Las Dahlias Apartments will be conveniently located along the Metro Gold line, between the Maravilla rail station and the East LA Civic Center rail station, connecting nearby residents to job opportunities in downtown Los Angeles and the San Gabriel Valley.

This stunning community will provide a mix of floor plans and an array of onsite community amenities, including programs and services provided by the Hope through Housing Foundation and several other community partners. The community has been designed to complement the surrounding neighborhood and will include a mural by a local artist. Residents of Las Dahlias Apartments will have access to a new community center, a public plaza, a stunning courtyard, a rooftop garden, laundry facilities, and so much more.

Las Dahlias Apartments

Enter your information below to be added to the property mailing list.

Name *

First Last

Email *

Zip Code *

Spam Protection. Please answer this simple question:

5, 6, 7, 8 : the 1st number is?

- Sign up on our development webpage to receive the latest updates
- nationalcore.org/communities/las-dahlias/
- Email Cynthia Mejia at cmejia@nationalcore.org

Stephanie Mercado

ABOUT

Born/Raised/Lives/Works

Boyle Heights

Influences

Textiles
Upholstery
Music
History
Science
Folklore
Story-telling

Values

Education
Empowerment
Artistic &
Cultural
Affirmation
Authenticity
Dignity

Artistic Mediums

Drawing
Painting
Acrylic
Gouache
Oil
Printmaking
Relief
Intaglio
Serigraphy
Monotype
Costuming
Ceramics
Video
Digital Design
Wed Design

Education

Bachelor of Art Drawing & Painting
California State University Long Beach



East Los Luv

Co-creating Art and Culture for the Love of East LA

A Public Art Project by Stephanie Mercado
www.eastlosluv.com



CO-CREATE WORKSHOPS
COMMUNITY ENGAGEMENT

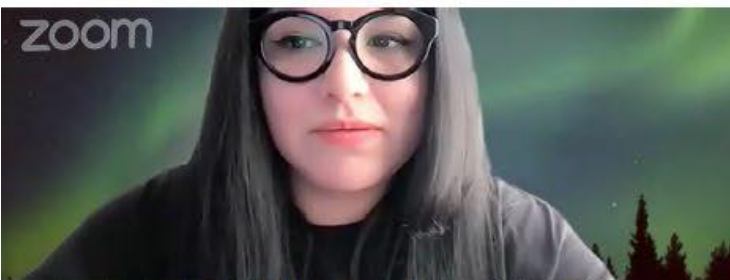




Co-create Workshop, Nonpalli Studio, East Los Angeles



Aspire High School, Día de los Muertos Activity, South East Los Angeles



Co-Create Artist Talk with Musician, Director, and Artist Sergio Arau, Zoom



ya_girl__kiki



Día de los Muertos Activity Installation, Online Engagement



Add a comment as eastlosluv...

COMMUNITY ENGAGEMENT STRATEGY

The community engagement phase for the project began in July of 2021 through January 2022. This period coincided with strict Covid protocols which influenced the community engagement process. Many efforts were made to schedule in person workshops with local schools and organizations, but many schools were not admitting guests or parents on campuses. Some schools and organizations were solely working remotely. The community outreach was split between a robust communications campaign online, notifying locals about the project through flyers at local businesses, and in person workshop as opportunities arose.

- Direct outreach, phone calls, emails, mailers
- Workshops
- Lesson plan
- Flyers
- Website
- Social Media Accounts
- Giveaways

Estimated Reach from Analytics and Head Count

- Online reach - 2,100 people
- High Schools - 340 students
- Workshops - 95 people
- Flyers - 2,000
- Artist Talks and Panels - 210 people
- Events (Fairs and Open Air Market) - 300 people
- Mail List - 350 people

Estimated reach: 5,735



Co-Create Workshop, Variety Boys and Girls Club, 2021



Co-Create Workshop, Variety Boys and Girls Club, 2021



Co-Create Workshop, Variety Boys and Girls Club, 2021



Co-Create Workshop, Variety Boys and Girls Club, 2021

CONNECTING THROUGH ART

- Workshops with artist designed coloring and collage activity sheets.
- Participants can include self-portraits, family photos, or images they would like to see included in the mural.
- Coloring sheets are themed to prompt participants to reflect on cultural values and identity.

Themes include:

- place
- family
- home
- portraiture
- food
- florals
- essential workers
- honoring loved ones
- celebrating artists

Coloring and collage activities are free and can be downloaded from EastLosLuv.com/resources

EAST LOS LUV FLYER DISTRIBUTION

- East Los Angeles Library
- Sandra's Tamales
- Sofreh Persian
- Nohpalli Studio
- International Printing Museum
- BLVD Market
- Chalio's Restaurant
- Los 5 Puntos
- El Mercadito
- Artists & Craftsman Art Supply

CO-CREATE WORKSHOPS

- Belvedere Park in person workshop
- Artist Talk with Sergio Arau via Zoom featuring special Sergio Arau Coloring Sheet
- Día de los Muertos Activity, Nohpalli Studio
- Día de los Muertos Activity, Aspire High School
- Día de los Muertos Activity, Locke High School
- Variety Boys and Girls Club Workshop, Boyle Heights



Co-Create Workshop, Belvedere Park, Mary Lou and Son Portrait

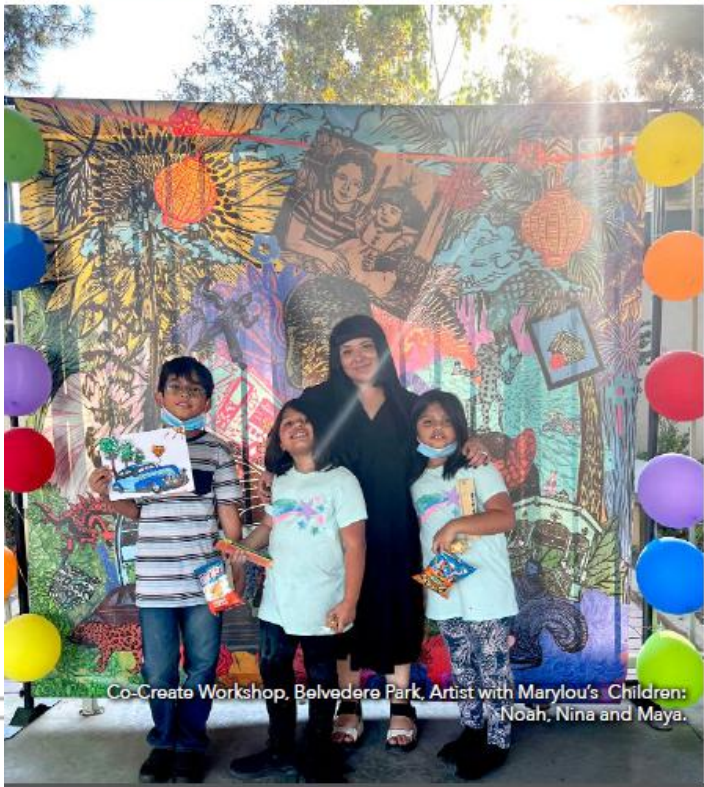
COMMUNITY FEEDBACK

Malou Soriano

to me ▾

Loved yesterday so much.

Our little unit really needed yesterday - more than I can really explain 🙏



Co-Create Workshop, Belvedere Park, Artist with Marylou's Children: Noah, Nina and Maya.

ART AND WELLNESS

Marylou is a registered nurse with three children who was working long hours during the height of the pandemic. Their family had just experienced the loss of their grandmother, and the children were studying remotely. Marylou shared with me that she really needed the time to be creative with her family and reconnect with old friends.

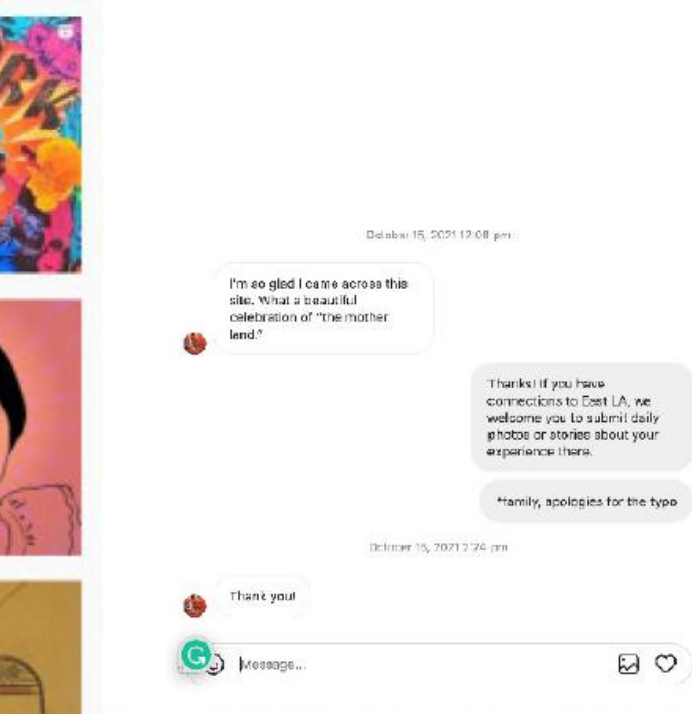
One of the goals of the coloring sheets was to encourage people to take a moment to be creative, de-stress, and reflect on their values during these stressful times.

Creative activities, art and events that inspire positive experiences such as listening to music, watching an uplifting film, and gathering with people have proven to improve health and wellness.

The elements within the proposed mural design also align with the goal to promote wellness and inspire cultural affirmation through natural elements, photos of community members, and cultural symbols.



Zoom



left: East Los Luv, Instagram feed with artist designed content, project updates, and prompts for participation.
 center top: East Los Luv Peechee Folder illustration, snapshot of audience's response.
 center bottom: Direct message responding to East Los Luv content.

COMMUNITY ENGAGEMENT - ONLINE

Digital content was created to engage people online through various social media channels and the East Los Luv website.

The coloring and collage activities were made available through the resources page on the website and announced on the social platforms to encourage people to participate.

The best performing content was a tribute to a Peechee folder featuring East Los Angeles icons. The post received 315 likes from followers and nonfollowers and had 3,936 unique impressions.

The total online reach to date is as follows:

Instagram: 112 posts - creative content developed by the artist
 680 followers
 13,398 - accounts reached
32,028 - impressions
 1,469 - profile visits

Facebook: 72 - followers
 2,025 - impressions

Twitter: 83 - followers
 2639 - impressions
 659 - profile visits

Website: 2,192 - all time views



East Los Luv Collage for Photo Backdrop, Co-Create Workshops

ADDITIONAL TOUCH POINTS

TEACHING ARTIST WORKSHOPS

Skirball Cultural Center, Honoring Memory Workshop for Educators

ARTIST TALKS

Skidmore College, New York, Artist Talk

Cal Poly Pomona, Pomona, Artist Talk

Cal State Long Beach, Long Beach, Artist Talk

Skirball Cultural Center, Town Hall, Los Angeles, CA

MENTIONS - project introduced at schools or online

Los Angeles Times Día de los Muertos Digital Altar

Los Angeles County High School for the Arts

Ramona Convent High School

Waverly High School

INTERVIEWS - project interview requested from community members

Samantha Nieves, Youth Writer for Boyle Heights Beat

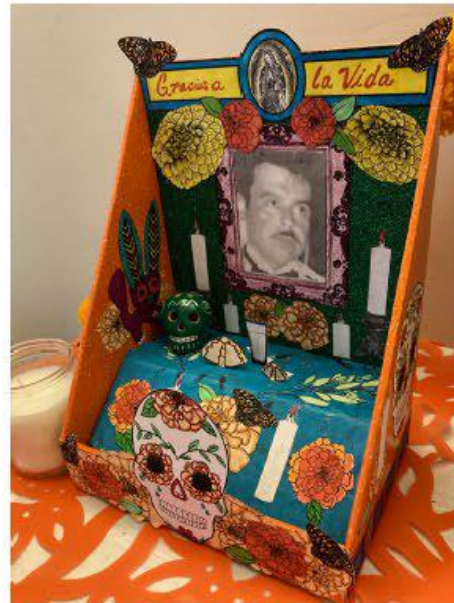
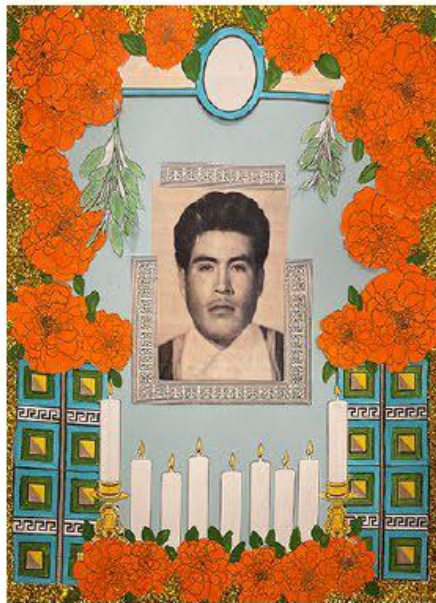
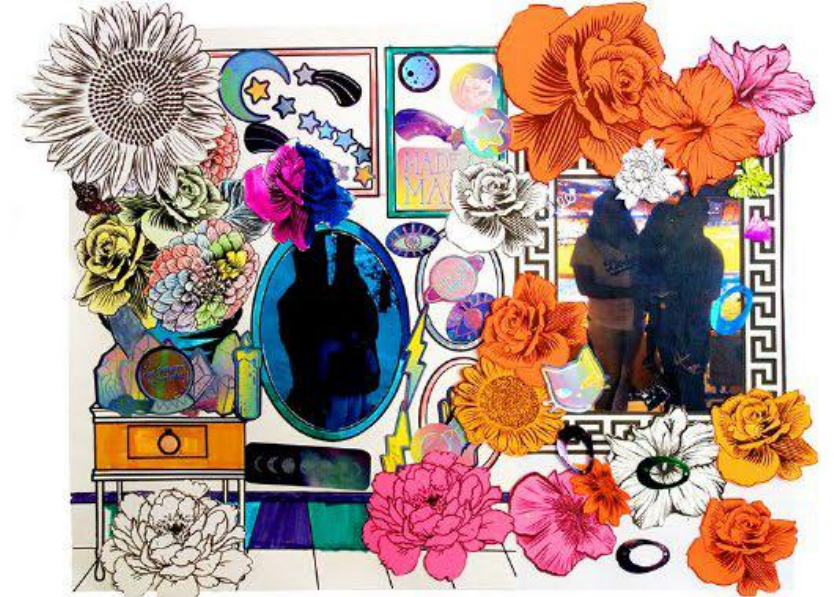
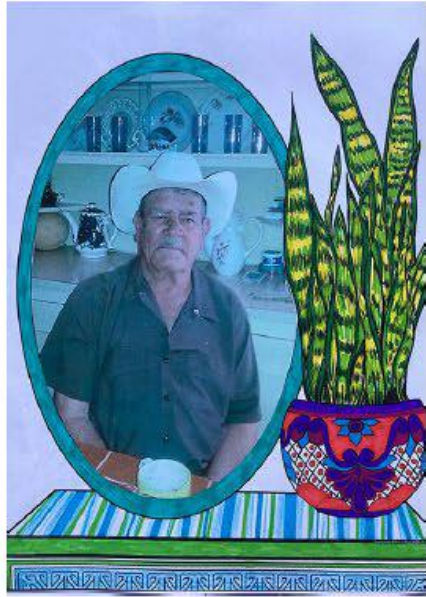
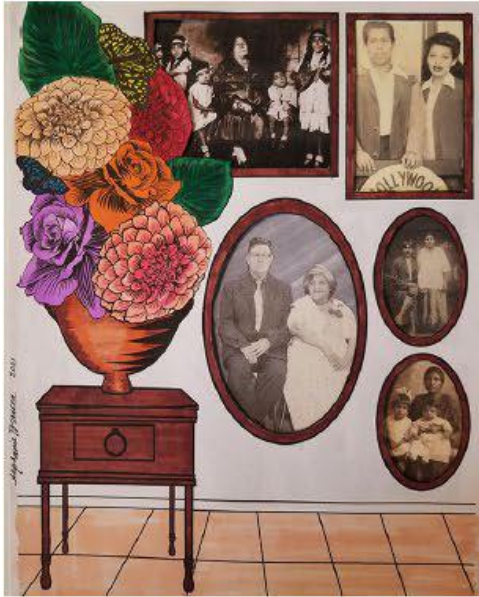
Marley Gonzalez, Youth Writer for high school literary magazine, Ramona

IN PERSON EVENTS

BLVD MKT, Gentefied Premier Night with artist vendors

International Printing Museum, Los Angeles Printers Fair

COMMUNITY ARTWORKS



COMMUNITY PHOTOS



"My parents immigrated from Mexico in the 80's and made East LA their refuge. Where many like them came for the American dream but stayed in East LA, where their culture was not lost. A home away from home. This picture I shared was of my mother and I in Hollenbeck Park, a park full of LA/ immigrant history. Where Sundays were meant for "raspado" day at the park. Those small gestures my mom did, have been the best memories for me. My mom is an amazing woman who did her best to seek a better future for my siblings and I. Making sure we don't forget our Mexican background and embrace our American future. As a native Angeleno, I proudly say I am from East LA. But also thank my mother who has done the best to make sure we don't forget her culture." - **DEISSY FLORES**

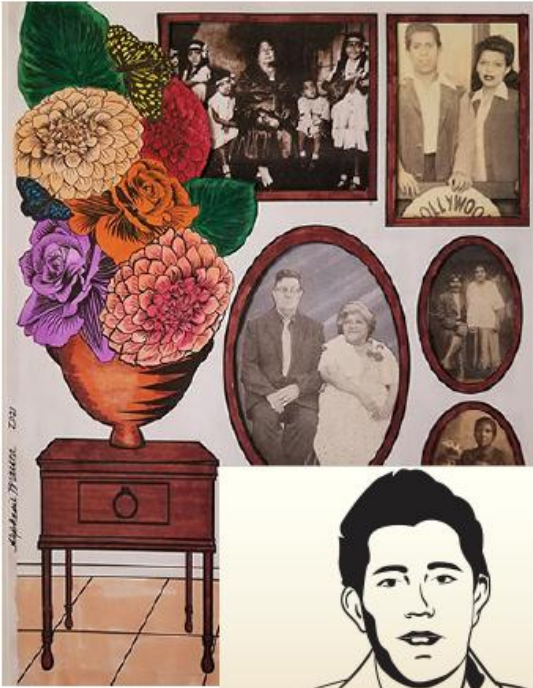


"I think back to realize what my parents went through, raising four kids after the war. I see that I've relived my Dad's life through my life. Having raised four kids myself and was in a war also. Life really is a circle." - **PETE TOVAR**

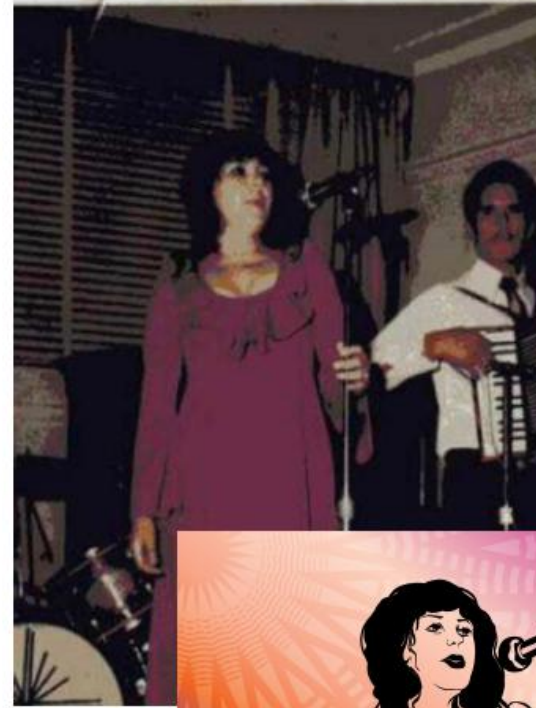
Pete Tovar is a Vietnam Veteran and Chicano artist. Art became a refuge for Pete after returning from the war.



COMMUNITY PHOTOS



"Growing up in Los Angeles in the time of the depression, families were large and close, and if you had friends, they were for life. Marco Trinidad and Rafaela (Fela) Carrillo both grew up and attended schools in East Los Angeles, but they didn't meet until she joined his carpool to work at Lockheed Aircraft during WWII. What started as friendship grew into love, and they married in 1946 at Our Lady Queen of Angels church. They celebrated 60 years of marriage before Marco passed away in 2006. Strong faith in God, a great work ethic, love of family and friends, love of being involved in church and community group events, and just celebrating life's simple pleasures is how they are remembered. Fela is still going strong and God willing will celebrate her 100th Birthday this year." - **STEPHANIE BRASSEA**



"My mom was a talented singer. Rancheras were her jam... In the early 70's she entered a contest at the Million Dollar theater in Downtown LA. She won first place, prize money, and a recording contract. The prize also included a local tour. She was a devoted wife and mother, and was not able to realize her dreams of becoming a singer due to family obligations. In another world I always wondered where it would have taken her if she followed her dreams" - **Ceci Camacho**

In memory of Cecilia Gonzales De La Hoya (1950 - 1990).



COMMUNITY PHOTOS



Cathy as a Garfield High School Cheerleader, ca. 1980.

Cathy describes her experience at Garfield High School as "A place where we were taught to dream big and the place where the journey started."

Cathy now works for Los Angeles County serving the East LA community.



My grandmother was Rosario "Rose" Lopez Pacheco, or NanaMom in our family. She was the mother of 7 children. During the chicano movement she became an organizer, a counselor, and an advocate for education. She has been credited by Dr. Rosa Maria Hernandez (former Principal of Bravo) for the creation of Bravo Medical Magnet High School. She founded PICA (Parents Involved in Community Action) where she worked pretty much until she got cancer, in the early 1990s.

She also was an evangelist at Dolores Mission and counseled many Central-American immigrants, especially women escaping war in the 80s and early 90s.

She was born and raised in East Los Angeles. Her father's family was from central Mexico and her mother's family was native to Southern California. She claimed in an interview that the house my parents live in was one of the first houses in the neighborhood.

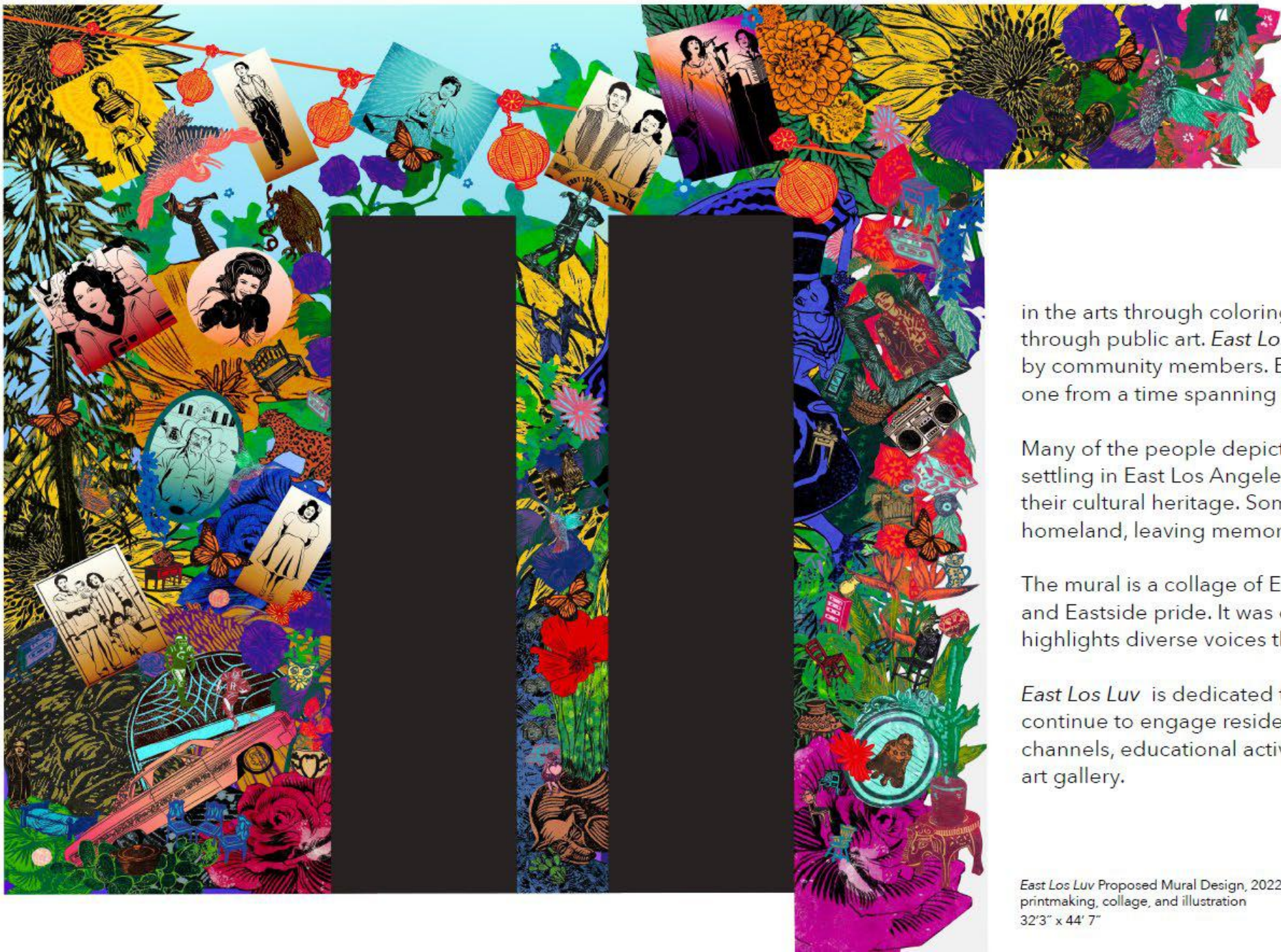
My family was there when they built Soledad Church, in fact she lived across the street from the church when she got married, where the medical clinic is now.

Thank you for including my grandmother, my family is going to love this!
- **JACOB HERNANDEZ**









DESIGN

East Los Luv is a collaborative public art project and mural that reflects and uplifts the diverse communities of East Los Angeles.

The public art project includes community engagement activities, encourages the public to participate in the arts through coloring sheets, and to honor their loved ones through public art. *East Los Luv* incorporates ten photos submitted by community members. Each photo captures an image of someone from a time spanning over one hundred years.

Many of the people depicted immigrated to the United States, settling in East Los Angeles because it resonated with them and their cultural heritage. Some of the individuals moved back to their homeland, leaving memories, and families behind.

The mural is a collage of East Los Angeles icons, cultural memory, and Eastside pride. It was co-created with Eastside residents and highlights diverse voices throughout the region.

East Los Luv is dedicated to the people of East LA and seeks to continue to engage residents through the website, social media channels, educational activities and a growing virtual community art gallery.

East Los Luv Proposed Mural Design, 2022
printmaking, collage, and illustration
32'3" x 44' 7"



East Los Luv
a Public Art Project
by Stephanie Mercado
www.stephaniemercado.com

PATH VILLAS EAST LA





Since our founding in 1984, **PATH** has pioneered bold and effective approaches to end homelessness and increase housing affordability throughout the state of California.

PATH currently works in over 150 cities serving approximately 20% of people experiencing homelessness and housing instability in California.





PATH Ventures PATH founded PATH Ventures in 2007 to develop high-quality, affordable, and stable homes for people struggling with the high cost of housing in California.

PATH Ventures builds and operates affordable rental homes paired with on-site services that support residents in regaining long-term stability, independence, and health.

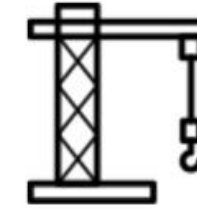
Built



1,132

UNITS

In Construction



338

UNITS

Coming Soon



1,021

UNITS

Retention Rate



90%

People Served



800+

Communities



36

TOTAL UNITS

2,491

PATH's work in East Los Angeles

Since 2015, PATH has been the central CES lead in East Los Angeles and throughout SPA 7, helping to conduct the following services:



Street Outreach



Screening & CES Assessments



Case Management



Housing Location Services



Ongoing Supportive Services





**CURRENT EAST LA
PRIORITY AREAS INCLUDE**



East LA Library



La Verne and 3rd St



Atlantic Park



Salazar Park



**HELPING PEOPLE
MAKE IT HOME**

PATH VILLAS EAST LA



5010 E. 3RD ST, LOS ANGELES

PATH Ventures newest effort is a supportive housing development designed to increase the availability of affordable housing in the neighborhood and help homeless individuals rebuild their lives in permanent homes.

MODULAR UNITS



These affordable units are innovatively constructed using factory-built modular containers, expediting housing for those most in need.





PATH VILLAS EAST LA

59 studio apartments

On-site case management & supportive services

2 BD apartment for on-site manager



PROJECT TIMELINE



APPLY FOR FUNDING

Nov 2022-
June 2023



BEGIN CONSTRUCTION

Dec 2023

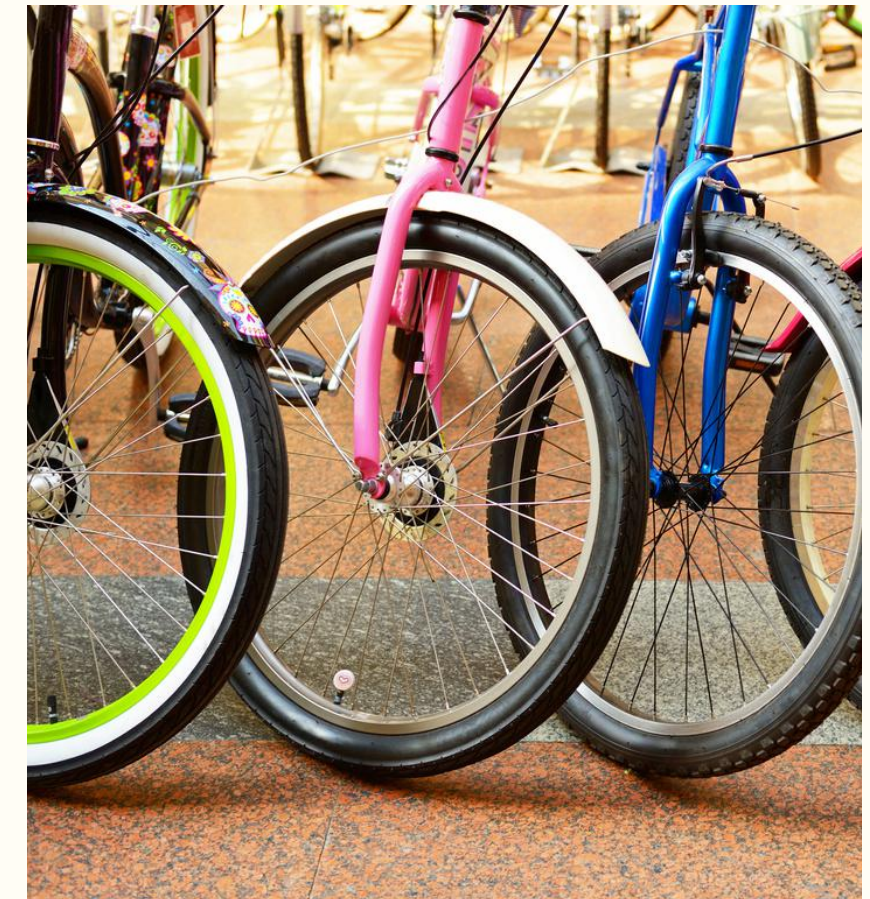


**COMPLETE
CONSTRUCTION**

Dec 2024

COMMUNITY SPACES & AMENITIES

- Community Meeting/Conference Space
- Resident Lounge w/ Full Kitchen
- Edible Gardens
- Roof Deck & Second Floor Terrace
- Computer Lab
- Parking & Bike Storage



HEALTH & WELLNESS

Food & Nutrition: Residents have access to a dietician and can benefit from growing fruits and vegetables in our rooftop community garden. Our clients also receive regular deliveries of fresh produce, meat, and nonperishable items through our partnership with Trader Joe's local food banks.



Wellness Group Activities: PATH offers a wide range of emotional wellness activities for our residents every week, including Coping Skills Class, Seeking Safety Workshop, Art Therapy, and a Paths to Recovery Class.

HEALTH & WELLNESS

Physical Wellness: PATH staff host a variety of activities to help promote an active and healthy lifestyle, including a weekly walking club and group outings to the local farmer's market.



Activities to Reduce Social Isolation: Our Activities Coordinator works to build community by hosting socially distanced documentary viewings, virtual tours of international cities, bingo, arts and crafts workshops, and various other competitive games with raffle prizes.

ON-SITE SERVICES

Job Training/ Computer Lab: Our computer lab provides residents the ability to remain connected to friends and family. It also gives an opportunity for residents to work on resumes, conduct employment searches, and take classes.



Community Room: Our community room and kitchen allows residents to come together to get to know one another and enjoy activities together, such as cooking classes and arts and crafts workshops hosted by volunteers.



Neighborhood Events to Build Community: PATH holds regular events with residents, PATH staff, and neighbors. Examples include a community cleaning event to pick up trash in the surrounding areas and beautify the neighborhood.



TRANSPORTATION

Transit Passes: PATH provides free transit passes to remove barriers for residents to use public transit.

Bikeshare Program: PATH has an on-site bikeshare program, bicycle maintenance shop and classes for residents to learn basic bicycle repair.

LYFT: PATH has a statewide partnership with Lyft to provide residents with free transportation to critical appts (medical, legal etc).

Community Integration Activities: PATH staff host community events designed to promote alternative transportation (i.e. VTA riding parties to fun destinations, group walking trips to local coffee shops, art galleries and the Farmer's Market).



THANK YOU!

Q&A

Community
Stability

Estabilidad
Comunitaria

Community Conversation on Civic
Leadership

**Conversación comunitaria sobre
liderazgo cívico**

Health
Innovation
Community
Partnership
(HICP)

How does HICP elevate consciousness to eliminate anti-Blackness and anti-Indigenous bias and promote anti-racist leadership, policies and practices?

Como puede HICP elevar la conciencia para eliminar el racismo contra la raza negra y la gente indígena? Como promovemos liderazgo, políticas y practicas que eleminan el racismo?

HICP Members

A recap of LA City Councilmember Crisis:

Leaked audio recording of a meeting between 4 very powerful Los Angeles Latinx leaders. Meeting took place over a year ago during the City of LA redistricting process.

Disturbing racist comments were made during that meeting.

Anti-Black comments.

Anti-Indigenous (Oaxacan Community) comments.

Homophobic comments.

Purpose and intent of the meeting was to draw council districts beneficial to the 3 council members present in that meeting.

Zero-sum game politics. In order for them to gain, others had to lose.

Accumulate “assets” for their districts at the expense of other districts losing those assets.

Attack on historically Black districts and Black political representation.

Attack on renter power and influence by ensuring renters do not become a dominant force with the support of one of the staunchest renter’s rights advocates on City Council.

How do we use the health equity space to elevate consciousness around anti-Blackness and anti-indigenous beliefs and rhetoric? How do we promote anti-racist policies and elevate consciousness around equity and just policies and practices?

I would like HICP to help us focus on mental health about these issues. I am suffering a lot over this. It hurt my heart tremendously.
- Monica Mejia

HICP can advocate for parity representation - Ari Gutierrez

Maybe we can commit to bring on reps from CD1 and CD 14 to this space to keep them mindful of what we expect from their representation - Francisco Sanchez

Can we recommend training to make our space more equitable and an opportunity for learning

Important convo to continue. We as HICP discussed the murder of George Floyd in 2020 but since then we haven't had ongoing discussions of racial discrimination.

Anti-racist policies must include inclusion of communities historically kept out of development process. One example is listening to reccs such as include IZO in ELA

elimination of bias trainings for health care providers are helpful, but it might also be helpful for them to get narratives from the community/patients they serve

Perhaps the HICP could host a discussion/forum on Anti-racism initiatives and best organizational and community engagement practices. Collaboratin



How do we use the health equity space to elevate consciousness around anti-Blackness and anti-indigenous beliefs and rhetoric? How do we promote anti-racist policies and elevate consciousness around equity and just policies and practices?

Mental health assistance is needed. Racial equity and gender equity need mental health support.

We can affirm that there is a need to reach out to POC and LGBTQ and to include them and listen to them.

Allow indigenous folks to enter into the conversation around client protocol in healthcare settings.

Next Steps

- Share ideas presented at last meeting
 - Develop an ad-hoc workgroup to address opportunities
 - Present to HICP in March 2023
-
- **Presentar ideas de la ultima junta para elevar la conciencia para eliminar el racismo contra la raza negra y la gente indígena**
 - **Desarrollar un grupo pequeño para evaluar oportunidades**
 - **Presentar a HICP en Marzo 2023**

Partner
Announcements
Anuncios de socios

Register for all HICP 2023 Meetings

See link in chat

Jan 13, 2023 08:45 AM

Feb 3, 2023 08:45 AM

Mar 3, 2023 08:45 AM

Apr 14, 2023 08:45 AM

May 5, 2023 08:45 AM

Jun 2, 2023 08:45 AM

Jul 7, 2023 08:45 AM

Aug 4, 2023 08:45 AM

Sep 1, 2023 08:45 AM

Oct 6, 2023 08:45 AM

Nov 3, 2023 08:45 AM

Dec 1, 2023 08:45 AM

Next Meeting:
Friday, January 2022

Próxima reunión:
viernes, de enero
2022

www.hicpla.org

HEALTH
INNOVATION
COMMUNITY
PARTNERSHIP