

HEALTH INNOVATION COMMUNITY PARTNERSHIP

Monthly Meeting
May 7, 2021

Reunión mensual
7 de mayo
de 2021



Tech Tips for Zoom Meetings

Consejos técnicos para reuniones de Zoom

- All attendees – please mute yourself unless you are speaking!

If there is too much background noise, the moderator will mute your line automatically.

- See your control panel at the bottom of your screen. You can turn your audio and video on or off by clicking the **microphone** or **camera**.

- A Todos los Participantes –por favor silencie su micrófono al menos que esté hablando.

Si hay mucho ruido de fondo, la moderadora lo silenciará automáticamente.

- Mire el panel de control en la parte inferior de su pantalla. Puede prender o apagar su audio y video presionando el micrófono o la cámara.



Tech Tips for Zoom Meetings

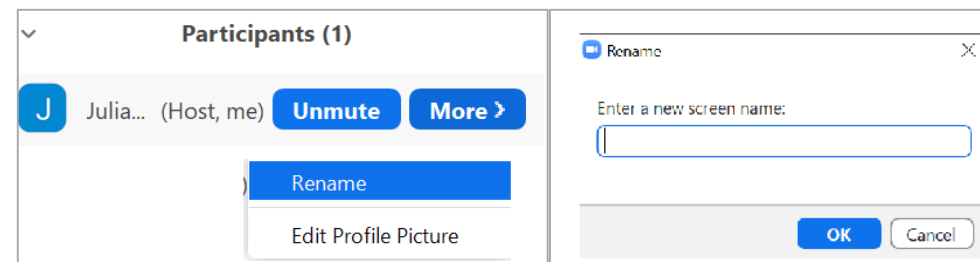
Consejos técnicos para reuniones de Zoom

- **Participants** shows a list of who is in the meeting.
 - Rename yourself: Look for your name>More>Rename>Ok
 - Click the “Raise Hand” button if you want to ask a question



Raise Hand

- **Chat** opens up a shared window where you can type comments or questions to be read by the moderator.
- **Interpretation** allows you to attend in your language of choice.

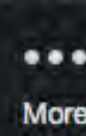
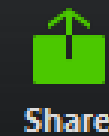
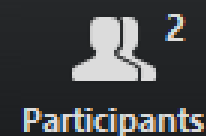
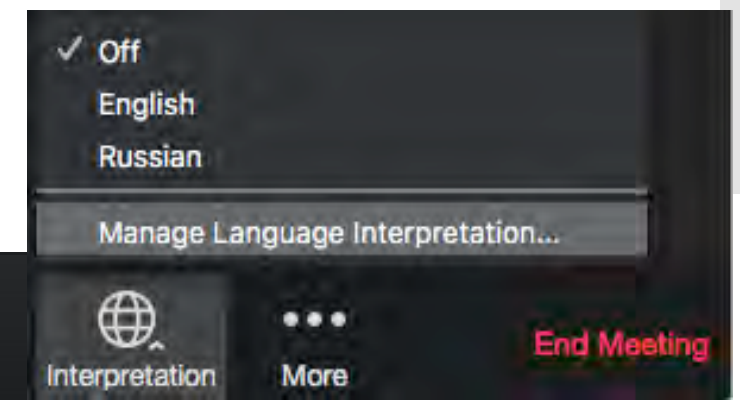


- **Participants** muestra la lista de quiénes están en la reunión.
 - Cambie su nombre: Busque su nombre>More>Rename>Ok
 - Presione el botón “Raise Hand” para hacer preguntas



Raise Hand

- **Chat** abre una ventana compartida donde puede escribir comentarios o preguntas que serán leídas por la moderadora.
- **Interpretation** permite escuchar la reunión en su lenguaje de preferencia.



End Meeting

Q&A

Preguntas y respuestas

- We will try to allow for as many questions as possible, but with a very full agenda, we may not be able to answer all questions live.
 - To ask a question – please “Raise a Hand” or type your question into Chat.
 - You can also use Chat for any comments or feedback for the session.
 - The moderator will ask for any questions from those on the phone during the Q&A period.
- Trataremos de permitir la mayor cantidad de preguntas posibles pero, como la agenda es muy extensa, es posible que no contestemos todas las preguntas en vivo.
 - Para hacer preguntas- por favor “Levante la Mano” o escriba su pregunta en el Chat.
 - También puede usar el Chat para comentarios o devoluciones de la sesión.
 - La moderadora tomará preguntas de quienes estén en el teléfono durante el período de Preguntas y Respuestas.

HICP Guiding Principles

(from our Vision
and Mission
document)

1. All participants agree to basic principles prioritizing equity, community resilience, and health in all programs and projects.
2. All participants agree to approach issues with an open mind, be willing to engage in dialogue, and commit to thinking boldly about solutions.
3. Participants will state views and ask genuine questions.
4. Participants will seek to avoid monologues and arguments; move to conversations where participants are curious and seek to understand various points of view.
5. Participants will explain reasoning and intent; share how we reach our conclusions so that others can understand our divergent reasoning.
6. Participants will attack the problem and not the person, organization, or institution.
7. Participants will define key terms so that we can attain a shared understanding.
8. Participants will share all relevant information.
9. Participants will always arrive prepared for the meeting.
10. During meetings, only one person speaks at a time; we will not engage in sidebar conversations.
11. Participants will work to develop a comprehensive, common set of information with which to solve problems and make decisions.
12. Participants will jointly design next steps.

Agenda

8:45	Welcome, Meeting Overview and Guiding Principles	Bienvenida, resumen de la junta y principios rectores
8:50	LAC+USC Medical Center Update	Actualización del Centro Médico LAC + USC
9:00	COVID Vaccine Equity Update	Actualización sobre la equidad de la vacuna COVID
9:15	SCAG Award Update	Actualización del premio SCAG
9:30	Measure J	Medida J
9:50	LA City Housing Element Plan	Plan de elementos de vivienda de la ciudad de Los Ángeles
10:20	Campus Civic Arts Update	Actualización de las artes cívicas del campus

COVID-19

LAC+USC Medical Center
Update

**Actualizaciones del Centro Medico de
LAC+ USC**

*Edgar Solis, Chief Operating Officer / Director de
operaciones*

COVID-19

LA County Vaccine Equity

**Equidad de vacunas del condado de
Los Ángeles**

Tiffany Romo, LA County Department of Public Health



Vaccine Equity

May 7, 2021

Tiffany Romo, MPH

Sr. Public Health Analyst – SPA 4 (Metro LA)



Overview

- ❖ Current Status of Vaccination
- ❖ Vaccine Equity
- ❖ Outreach Efforts





LA County's Current Status

Adjusted Cases (per 100K)	Positivity Rate	Positivity Rate Lowest HPI
1.6	0.7%	0.8%

LA County moves into the **Yellow** Tier this week



Current Status of Vaccination





**COVID-19 VACCINES
ARE AVAILABLE FOR
ANYONE 16+ WHO
LIVES OR WORKS IN
LA COUNTY.**

Sign up for appointment notifications:

MYTURN.CA.GOV

Phone assistance:

(833) 540-0473

from 8am-8:30pm



DID YOU KNOW?

**COVID-19 VACCINES
ARE 100% FREE**

Health insurance is not required.



COVID-19 Vaccinations in LA County



Total Doses Administered

as of 04/30/2021

8,033,146

First Doses: 4,988,031

Second Doses: 3,045,115



Residents Vaccinated

Age 16+ with at least 1 dose

as of 04/28/2021

4,485,937 (53.9%)

Fully Vaccinated: 2,983,914 (35.8%)



Seniors Vaccinated

Age 65+ with at least 1 dose

as of 04/28/2021

1,087,846 (79.2%)

Fully Vaccinated: 887,855 (64.6%)



Vaccination Declining in LA County

Week	Doses Administered	Average daily doses administered
Apr 17-Apr 23	611,592	87,370
Apr 24-Apr 30	467,134	66,733



COVID-19 VACCINE

Need Help?

Call the DPH Vaccine Call Center at 833-540-0473 if:

- You don't have a computer or need help making an appointment
- You need transportation to a vaccination site
- You are homebound and need to get vaccinated at home (availability may be delayed due to high demand)

The Call Center is open daily 8:00am to 8:30pm. Information is also available in multiple languages 24/7 by calling 2-1-1.





Vaccine Equity





Cumulative Percent of Population 16 and Older who have Received At Least 1 Dose of Vaccine, by Week and Race/Ethnicity

Race/Ethnicity	Mar 25, 2021	April 25, 2021	Relative Increase
Latino/Latinx	19%	33%	79%
American Indian/Alaska Native	34%	53%	55%
Asian	38%	59%	55%
Black/African American	21%	32%	52%
White	36%	53%	48%
Multiracial	30%	38%	27%



Cumulative Percent of Population 16 and Older Who Have Received At Least 1 Dose of Vaccine, by Gender

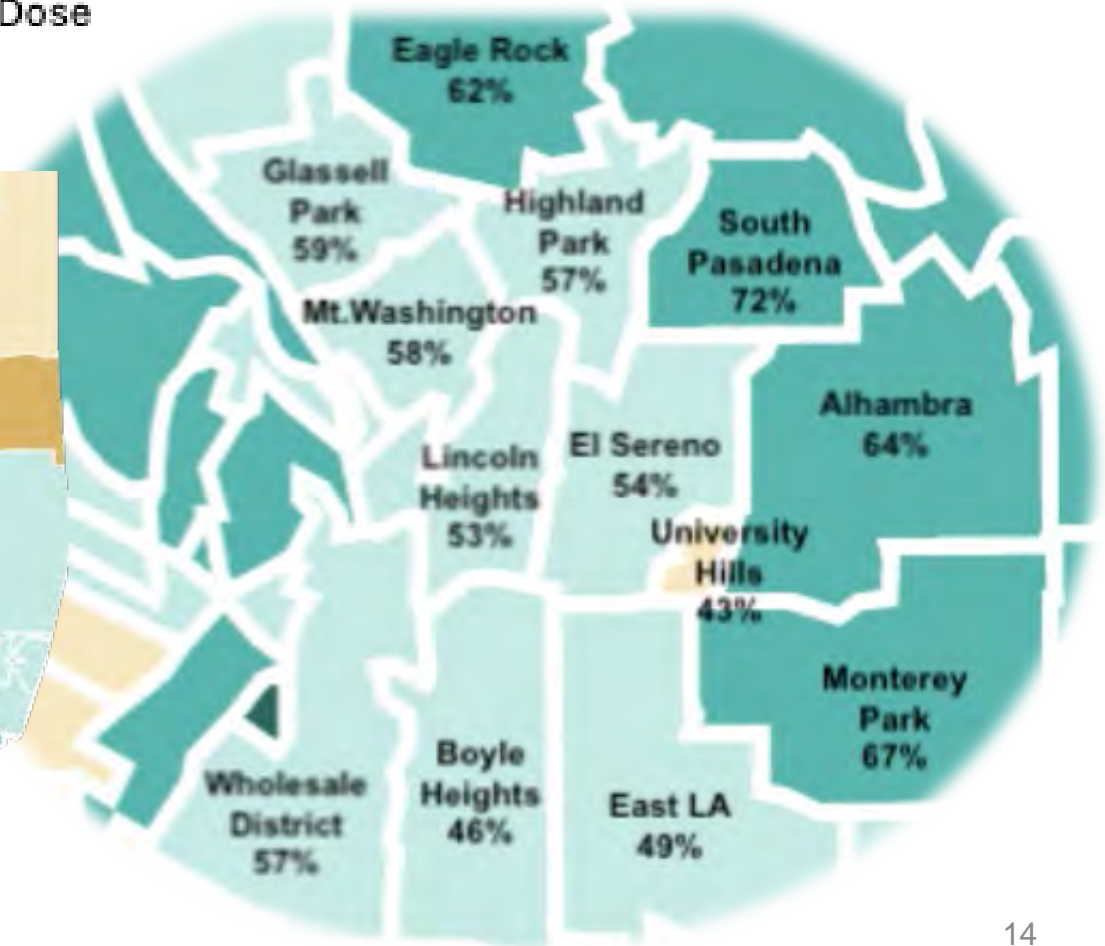
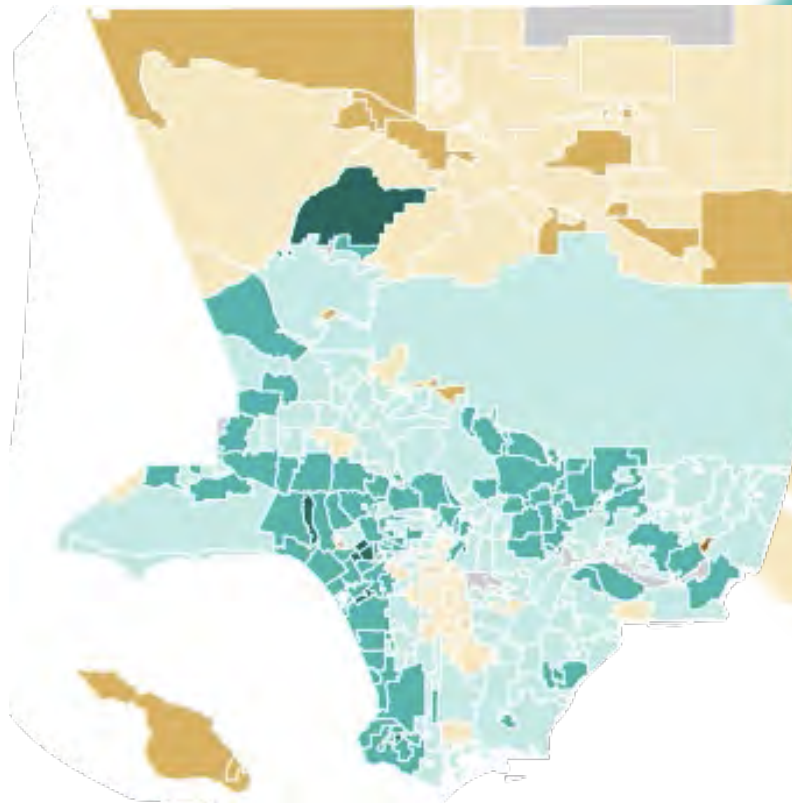
Gender	People Who Have Received at Least 1 Dose of Vaccine
Male	1,779,467 (45.5%)
Female	2,126,197 (54.3%)
Other	15 (0.00%)
Unknown	9,059 (0.2%)
Total	3,914,738

Data from 4/18/21

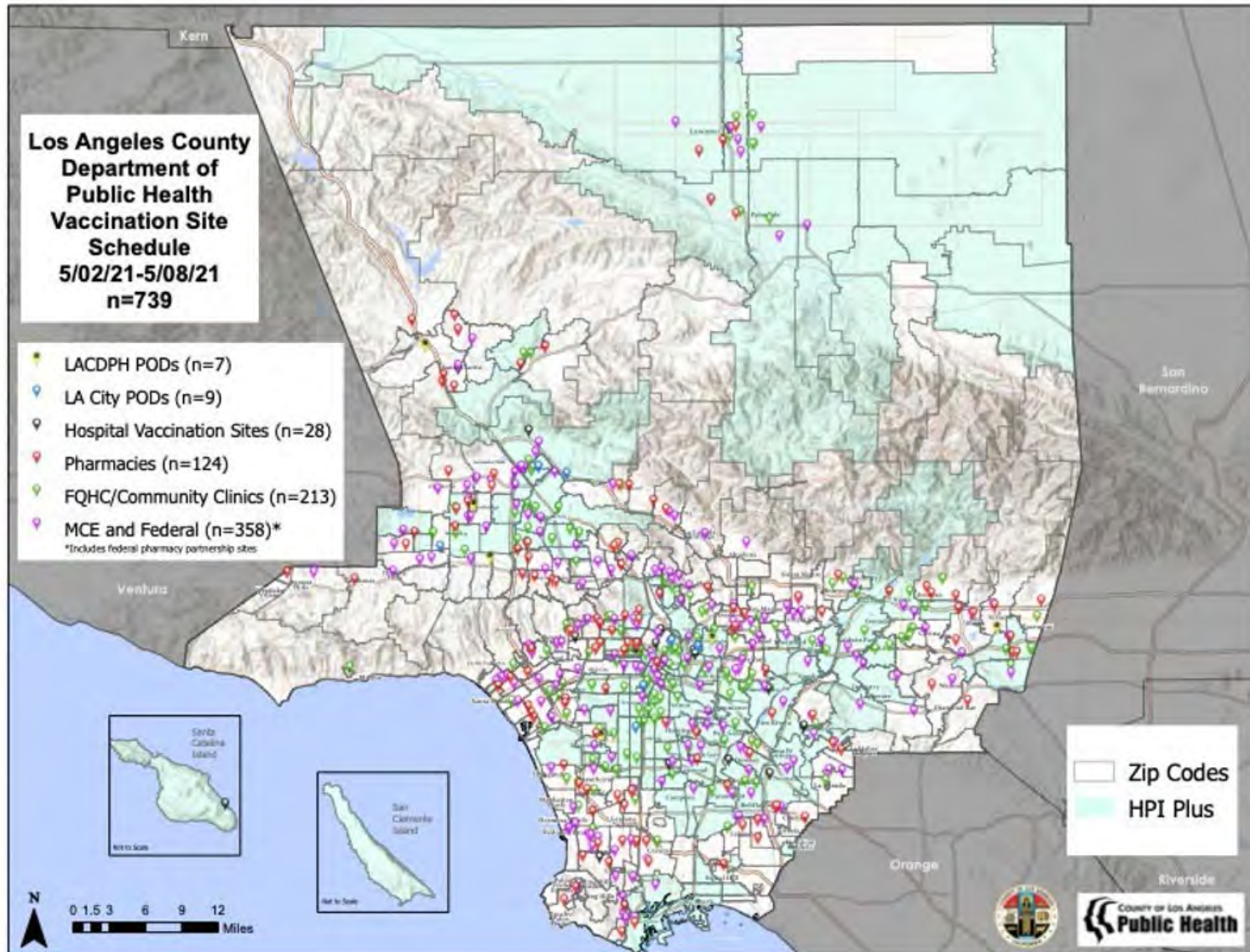
Percent Vaccinated with 1+ Dose By Community

April 30, 2021

Percent Vaccinated with 1+ Dose

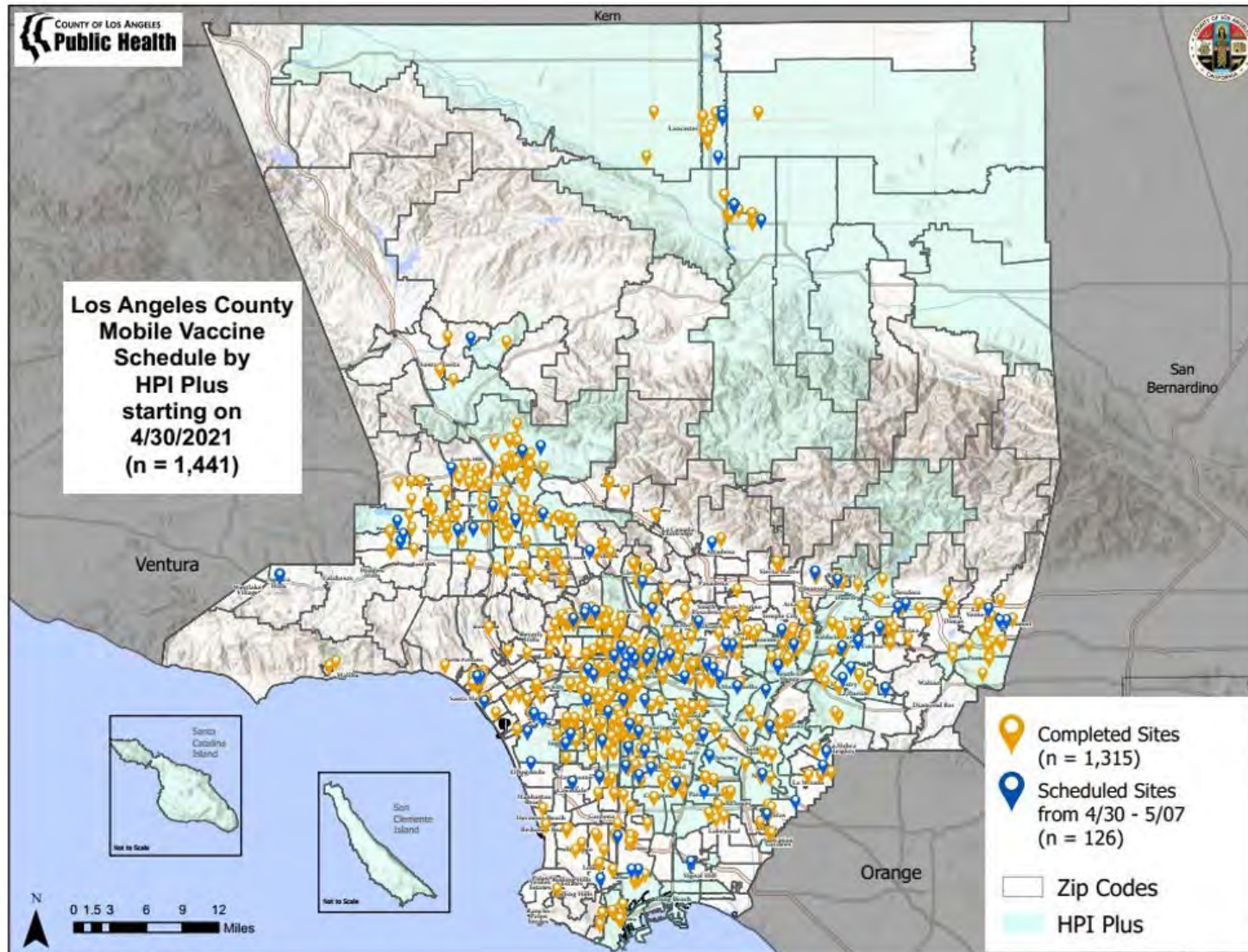


Increasing Vaccination Sites in Hard Hit Communities

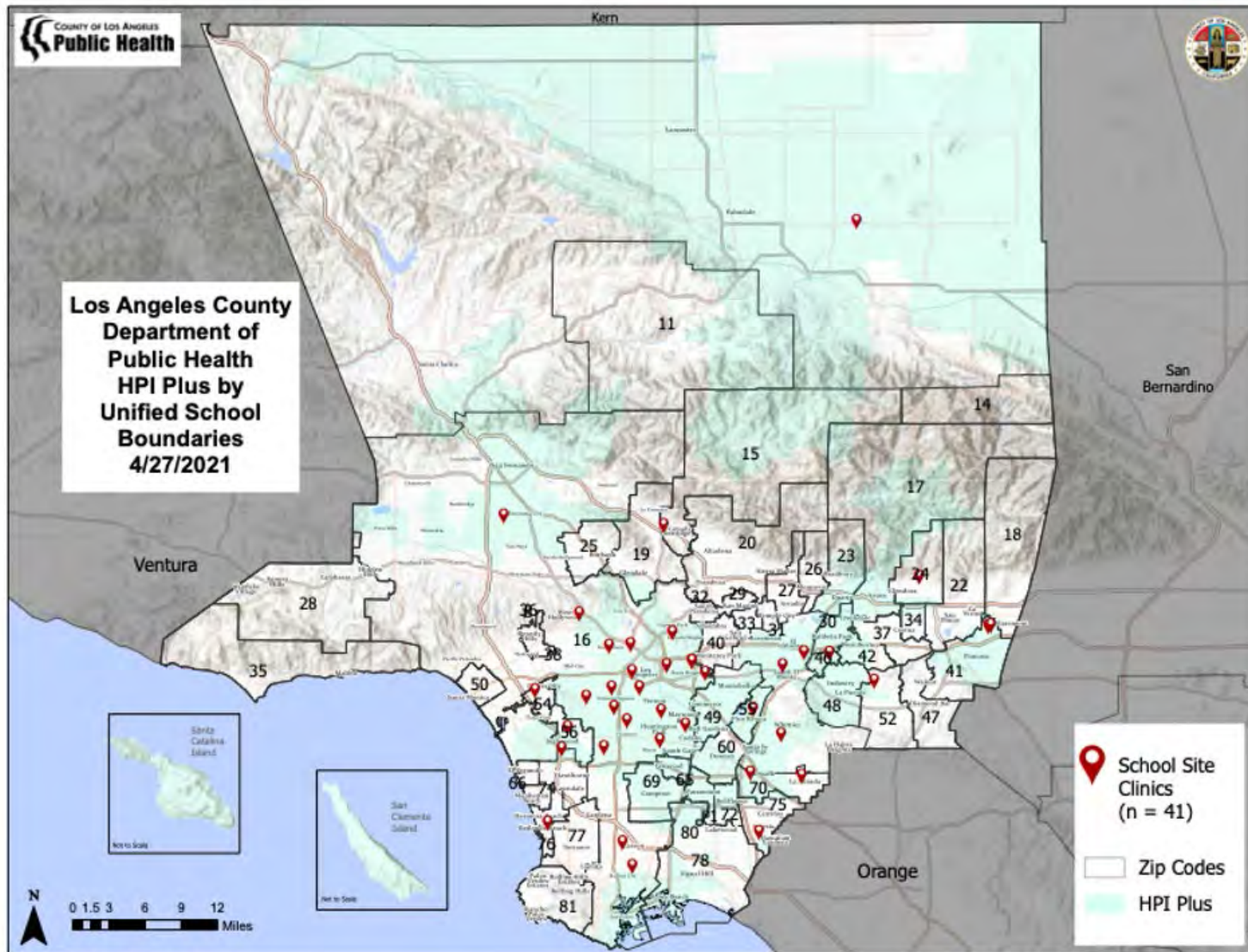


Map created April 29, 2021 by: KDC/CMH - COVID-19 KSL/IK/WH/STP
 Disclaimer: The printed form of information presented only and may not be subject to high resolution, or interpretation.
 Some of the information displayed on or printed from this site and information source is subject to the availability of the information.

Mobile Vaccination Sites Across Los Angeles



School Partnerships



Map created April 27, 2021. All icons/lines - ©2020 by Esri/US Products. Content: This product is for informational purposes only and may not be suitable for high, engineering, or surveying use. Users of this information should always consult the original data and information sources to determine the validity of the information.

Source: Esri, USGS, NOAA



DPH Outreach Efforts





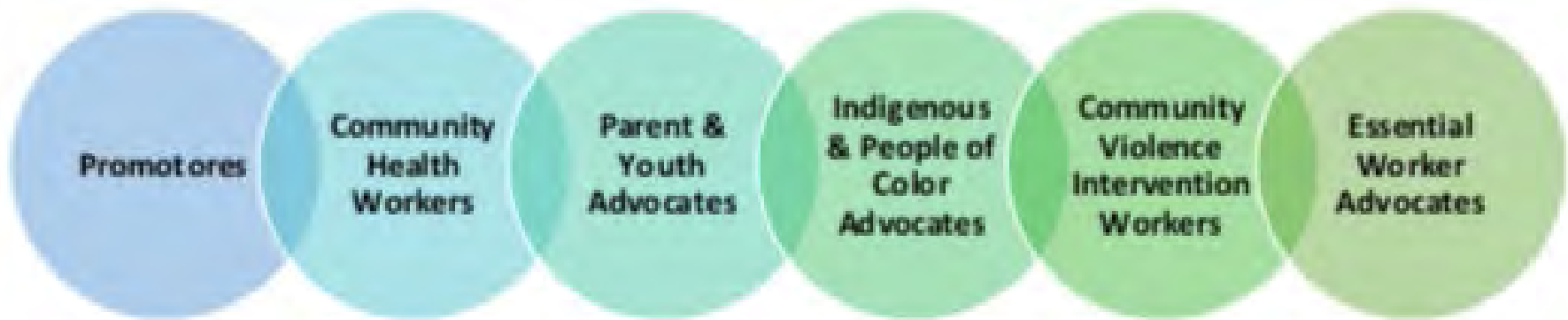
Faith Based Initiative



- 230 congregations across LA County
- Partnerships with faith-based organizations have helped deliver nearly 30,000 total doses of vaccine.
- 22,000 first doses; 6,500 second doses
- More than 100,000 projected doses



Community Health Worker Outreach Initiative



Slow the Spread, Build Vaccine Confidence, and Connect to Resources

CHWs provide both in-person and virtual outreach to priority groups in communities that have the highest need based on analysis of COVID-19 case rates, Social Vulnerability Index, and vaccination rates.



Public Health Councils



Public Health Council members are promoting health and safety at worksites

- PHCs are groups of trained workers ensuring compliance with HOO safety measures at workplaces by conducting worker trainings and reporting non-compliance

Community partners across a variety of industries are involved

- Priority sectors for initial PHCs are apparel and food manufacturing, warehousing and storage, restaurants, and grocery stores



Community Equity Fund



LA County Launches the Community Equity Fund with Community-based Organizations in Regions and for Communities Most Impacted by COVID-19

GOAL: Reduce the disproportionate impact of COVID-19 in L.A. County by partnering with organizations and providing them with funding, training and technical assistance.

Los Angeles County In-Home COVID-19 Vaccination Requests

Community-based organizations and other agencies can make referrals for their clients who are unable to attend existing community vaccination sites

Eligibility Criteria:



The individual needs the help of another person or medical equipment such as a wheelchair to leave their home OR their doctor believes that their health or illness could get worse if they leave their home



AND it is difficult for the individual to leave their home
AND the individual typically cannot leave their home



Public Request forms are also available for individuals or their loved ones who are unable to attend an existing community vaccination site.



Stay Informed

COVID-19 VACCINE

Sign up for the
Vaccine Newsletter at
VaccinateLACounty.com



 County of Los Angeles
Public Health 

Follow DPH on Social Media
@lapublichealth



Watch Virtual Briefings
every Monday at 2pm



For More Information

COVID-19 Vaccine Eligibility & Appointments:

<http://www.publichealth.lacounty.gov/media/coronavirus/vaccine/index.htm>

LA County COVID-19 Vaccine Dashboard:

<http://publichealth.lacounty.gov/media/coronavirus/vaccine/vaccine-dashboard.htm>

Public Health Councils Initiative:

[http://publichealth.lacounty.gov/phcommon/public/media/mediapubhpdetail.cfm?pri
d=3102](http://publichealth.lacounty.gov/phcommon/public/media/mediapubhpdetail.cfm?pri
d=3102)

Equity Fund:

<https://covid19.lacounty.gov/covid19-news/>

LAC In-Home COVID-19 Vaccination Request Forms:

(CBO's & Agencies)

[https://forms.office.com/Pages/ResponsePage.aspx?id=SHJZBzjqG0WKvqY47du
sgfxfscVnb11MIWE_8lqAo0IUNjNCOFI4OTZTMktBMTVRUFIBODNRWEgyUC4u](https://forms.office.com/Pages/ResponsePage.aspx?id=SHJZBzjqG0WKvqY47du
sgfxfscVnb11MIWE_8lqAo0IUNjNCOFI4OTZTMktBMTVRUFIBODNRWEgyUC4u)

(Public Request Form)

[https://forms.office.com/Pages/ResponsePage.aspx?id=SHJZBzjqG0WKvqY47du
sgfxfscVnb11MIWE_8lqAo0IUQjcxQ0ISRjJHskRIUFBIQT12SUJEQ01LRC4u](https://forms.office.com/Pages/ResponsePage.aspx?id=SHJZBzjqG0WKvqY47du
sgfxfscVnb11MIWE_8lqAo0IUQjcxQ0ISRjJHskRIUFBIQT12SUJEQ01LRC4u)

Housing

Vivienda

SCAG Award Announcement

Anuncio del premio SCAG

*Jose Gardea, Special Advisor on Workforce and
Economic Development, Office of Supervisor Hilda L.
Solis*

Questions?

¿Preguntas?

Equity

Equidad

LA County Measure J

Medida J del Condado de Los Ángeles

Esther Lim, Justice Deputy, Office of Supervisor Hilda L. Solis

Measure J Overview

ATI Office

ATI



YJR



ACR



Meas J



Measure J mandates at least **10%** of the County's locally generated, **UNRESTRICTED** funding be appropriated towards **DIRECT COMMUNITY INVESTMENT & ALTERNATIVES TO INCARCERATION**

LA County Voters approved **MEASURE J** in the November 2020 Election

LA County has 3 years to build up to the **10% TARGET**, so that by FY 2023-24 the full 10% allocation is incorporated annually

RESTRICTED FUNDS refer generally to \$\$ required to finance mandatory fixed costs over which County lacks discretion (e.g., legal settlements, debt service payments, public assistance, contractual agreements, and others)

DIRECT COMMUNITY INVESTMENT

1. Youth Development & Education
2. Workforce Development
3. Small Business Development For Minority-Owned Businesses
4. Rental Assistance & Housing Supportive Services
5. Capital Funding (Housing)

ALTERNATIVES TO INCARCERATION

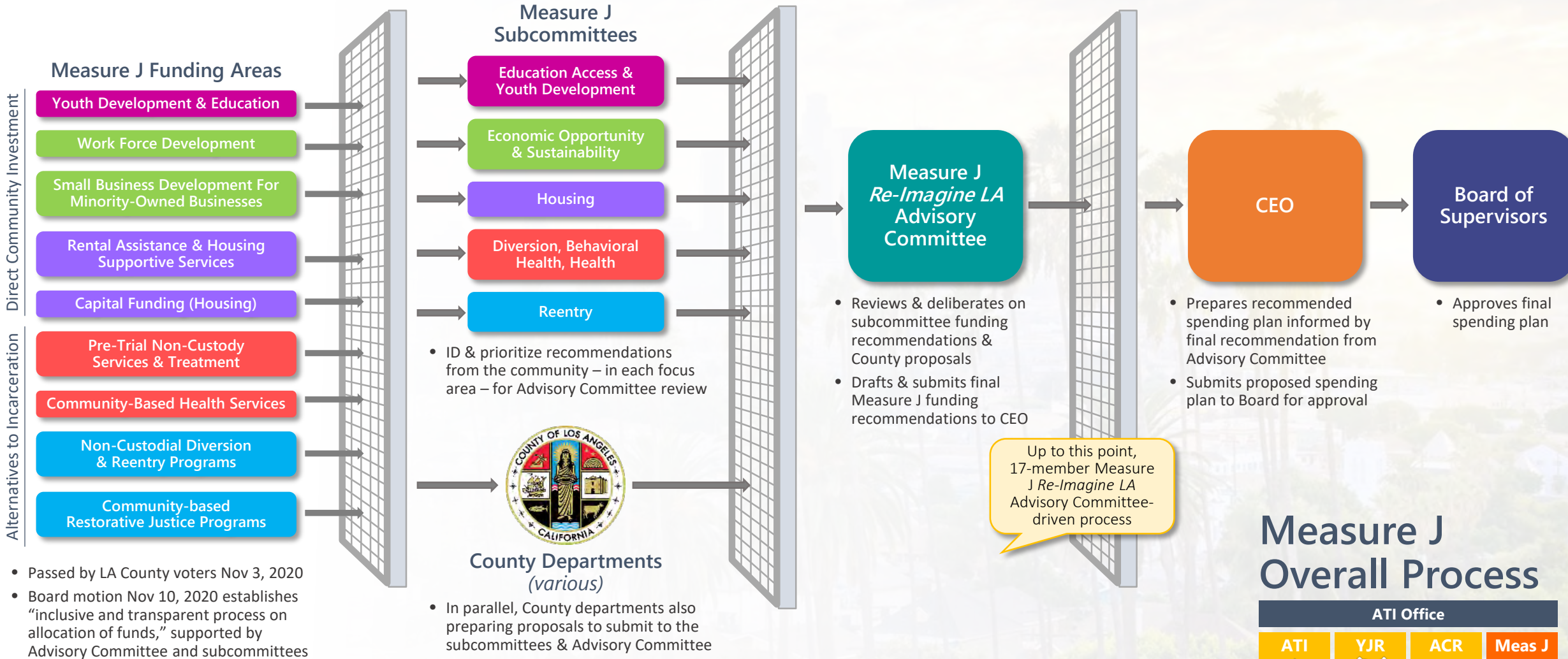
6. Pre-Trial Non-Custody Services & Treatment
7. Community-Based Health Services
8. Non-Custodial Diversion & Reentry Programs
9. Community-Based Restorative Justice Program

Nov 2020

Feb – Mar 2021

Mar – Apr 2021

May – Jun 2021
FY2021-22 Final Changes Budget



- Passed by LA County voters Nov 3, 2020
- Board motion Nov 10, 2020 establishes "inclusive and transparent process on allocation of funds," supported by Advisory Committee and subcommittees

Community-Led Process (1/2)

Re-Imagine LA Advisory Committee

Measure J

ATI Office



2021-2022 Advisory Committee

Board Appointees

- Veronica Lewis, *Chair*
SSG/HOPICS
- George Andrews
NAACP, Antelope Valley Branch
- Eunisses Hernandez
La Defensa, JLA Coalition
- Dr. Robert Ross
California Endowment
- April Verrett
SEIU, Local 2015

County Department Leads

- Dr. Jon Sherin, *Vice Chair*
Department of Mental Health (DMH)
- Judge Peter Espinoza (ret)
Office of Diversion & Reentry (ODR)
- Dr. Barbara Ferrer
Department of Public Health (DPH)
- Dr. Christina Ghaly
Department of Health Services (DHS)
- Dr. Gary Tsai
Substance Abuse Prevention & Control (SAPC)

Lived Experience Members

- Mandie Dixon
A New Way of Life Reentry Project
- Ta (Duc) Huynh
API RISE
- Roberto Luca
Mass Liberation
- Hector Ramirez
Disability Rights California
National Disability Rights Network
- Bill Tarkanian
LA Center for Alcohol & Drug Abuse (LACADA)

Labor Representatives

- Daniel Langford
Southwest Regional Council of Carpenters
- Bob Schoonover
SEIU, Local 721

- 17-member committee, comprised of
 - Board appointees (5)
 - County department leads (5)
 - Individuals with lived experience (5)
 - Labor representatives (2)
- 2-year term, ending September 2022
- Develop spending plan recommendation process

Community-Led Process (2/2)

Re-Imagine LA Subcommittees

Measure J

ATI Office



Co-chairs

From Advisory Committee

Elected by Subcommittee



Economic Opportunity

Mondays 4-6:30pm (Feb 8-Mar 15)

Daniel Langford

SW Regional Council of Carpenters

Ivette Alé

Dignity and Power Now, JLA Coalition



Diversion, Behavioral Health & Health

Tuesdays 4-6:30pm (Feb 9-Mar 9)

Eunisses Hernandez

La Defensa, JLA Coalition

Brian Kaneda

CURB, JLA Coalition



Education Access & Youth Development

Tuesdays 6-8:30pm (Feb 9-Mar 9)

Mandie Dixon

A New Way of Life Reentry Project

Anthony Robles

Youth Justice Coalition, JLA Coalition



Housing

Wednesdays 4-6:30pm (Feb 10-Mar 10)

Bill Tarkanian

LACADA

Sophia Li

Brilliant Corners, JLA Coalition



Reentry

Wednesdays 6-8:30pm (Feb 10-Mar 10)

Roberto Luca

Mass Liberation

Raymundo Zacarias

Coalition for Engaged Education, JLA Coalition

Questions?

¿Preguntas?

Housing
Vivienda

LA City Housing Element Plan

**Plan de elementos de vivienda de la
ciudad de Los Ángeles**

Matthew Glesne, City Planner, LA City Planning



LOS ANGELES
CITY PLANNING

Los Angeles Housing Element Update

Health Innovation Community Partnership (HICP)

May 7, 2021

LOS ANGELES
CITY PLANNING

Partnering Agencies



Government Agencies That Regulate Housing in the City of Los Angeles?



Agenda

1. Housing Element Background
2. Housing Needs (the State of Housing in LA)
3. RHNA
4. Vision and Draft Concepts
5. Draft Plan and Next Steps
6. Q&A

Housing Element Background



General Plan Update to Two Elements



LAND USE
(35 Community Plans)



AIR QUALITY



CONSERVATION



HEALTH



SAFETY



MOBILITY



**INFRASTRUCTURE
SYSTEMS**



OPEN SPACE



**PUBLIC
FACILITIES &**



NOISE

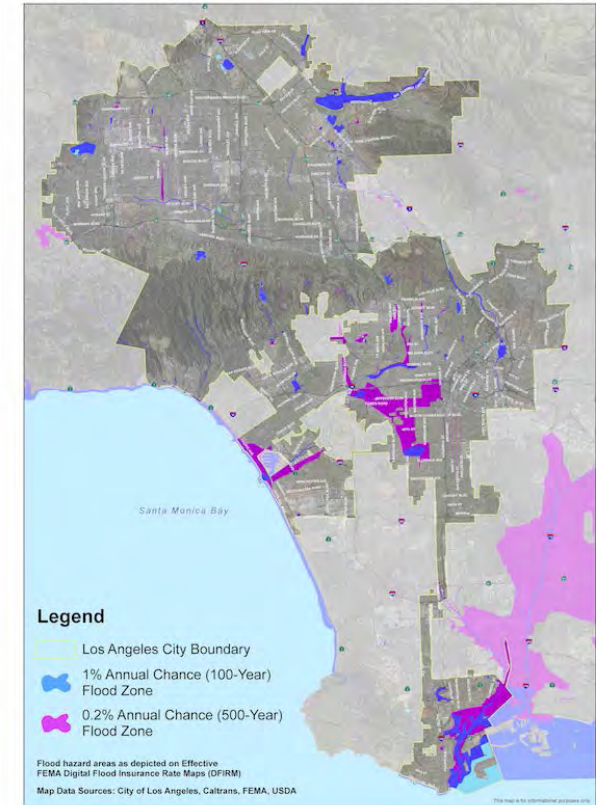


HOUSING

Safety Element Updates

- Certain reviews and updates to the Safety Element triggered alongside Housing Element Update
- Expanded focus on planning for **fire, flooding, and climate change**
- Integration of other plans, including **Local Hazard Mitigation Plan, Floodplain Management, Sustainability pLAN (GND) and Resilient Los Angeles**

City of Los Angeles - FEMA DFIRM Flood Hazard Areas



State Housing Element Law

- Established in 1969 to address **housing equity/“fair share”**
- 8 Year Plan for adequate, affordable housing (**RHNA**)
- Mandatory and **must be approved** by the State (HCD)
- **Affirmatively Further Fair Housing (AFFH)**
- **Penalties** for non-compliance

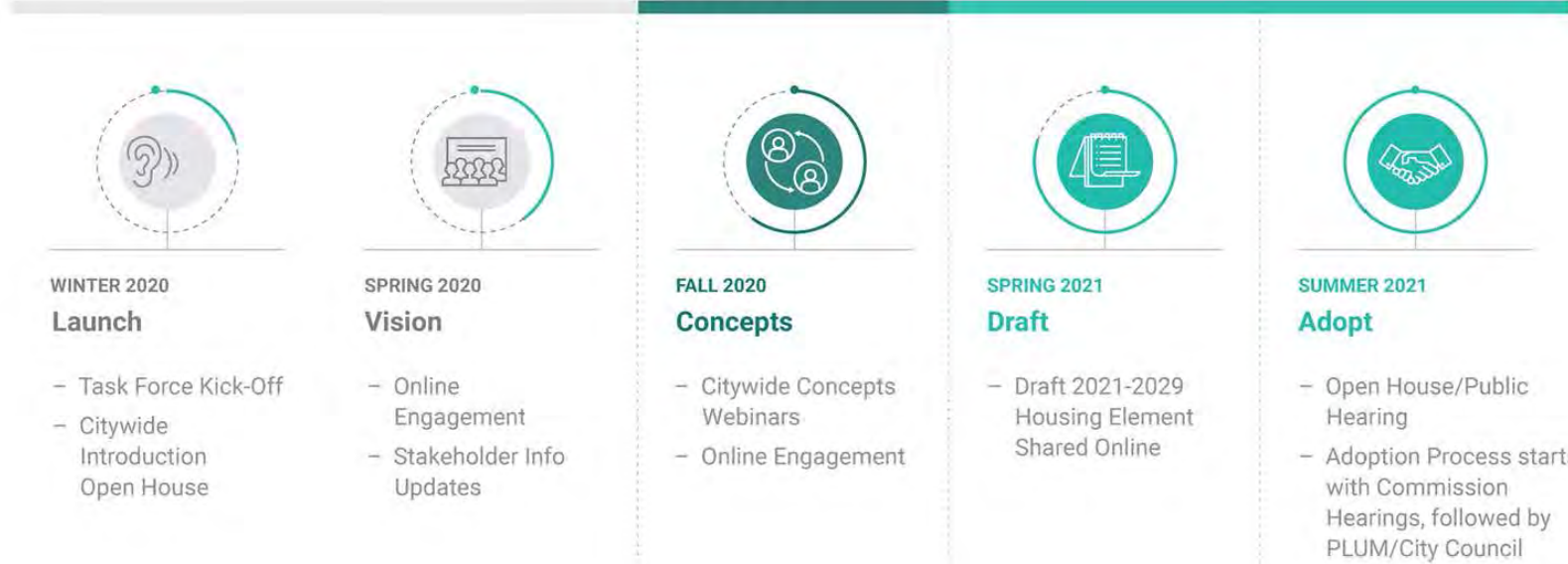


Housing Element Components



Housing Element Update - Process

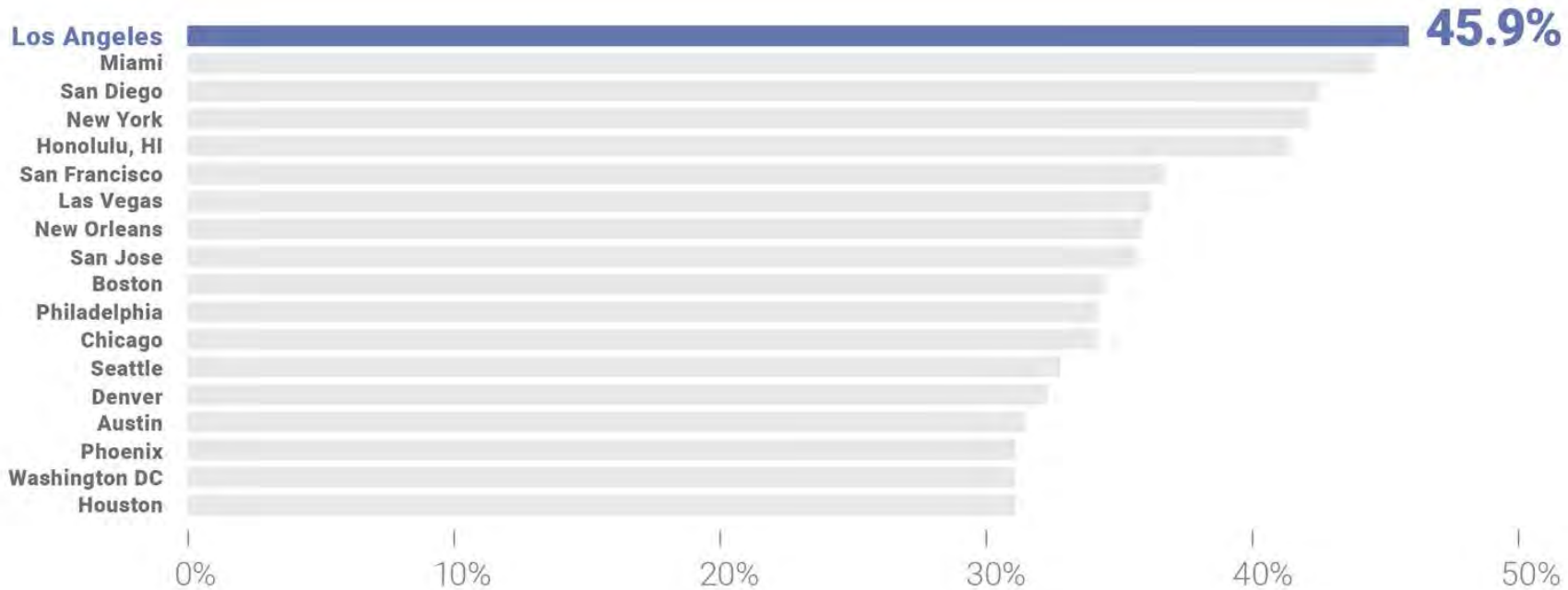
We Are Here



Housing Needs and Barriers

The background of the slide features a blue-tinted image of a city skyline with several skyscrapers. In the foreground, a large, white, classical-style building with three prominent domes is situated on a grassy hillside. The building has a central entrance and several windows. The overall scene is viewed from an elevated perspective.

LA has a higher percentage of “cost burdened” households than any other major American city



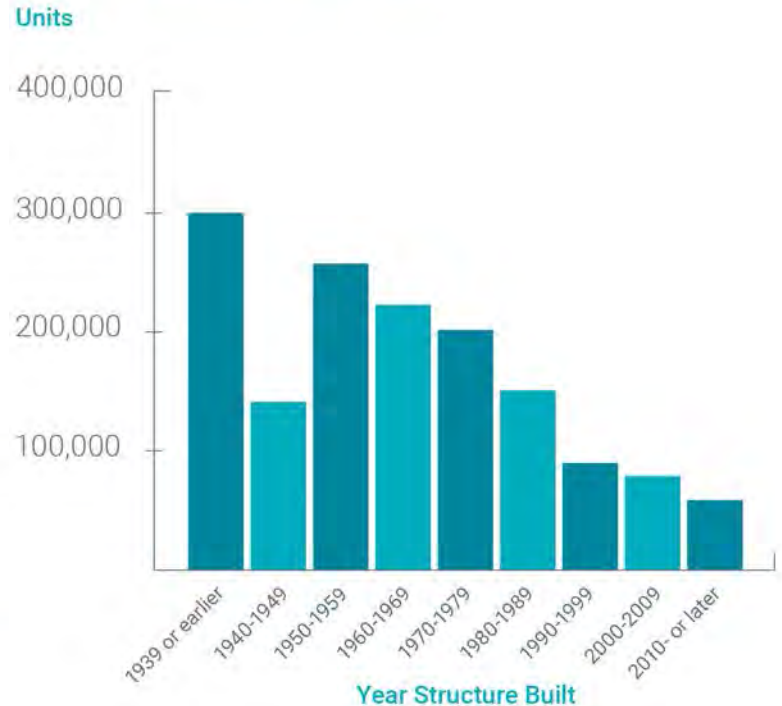
LA's Housing Stock

LA is a City of Renters



Source: U.S. Census Bureau, 2014-2018 American Community Survey 5-Year Estimates

Age of Housing Units

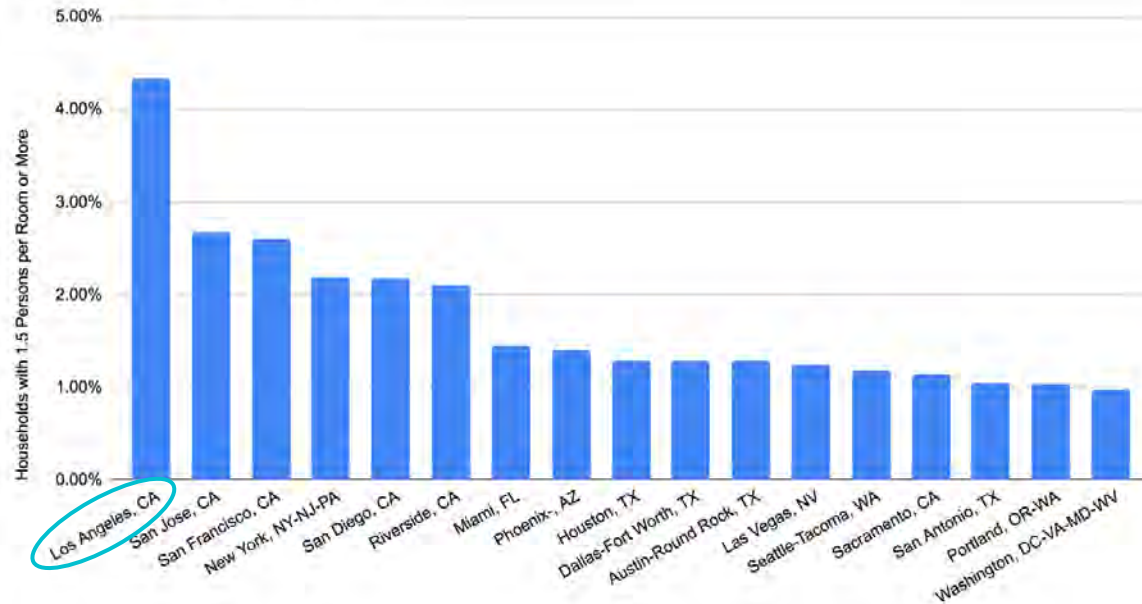


LA is the Most Overcrowded Region in the Country

A shortage of affordable housing options and has lead to disparate health outcomes

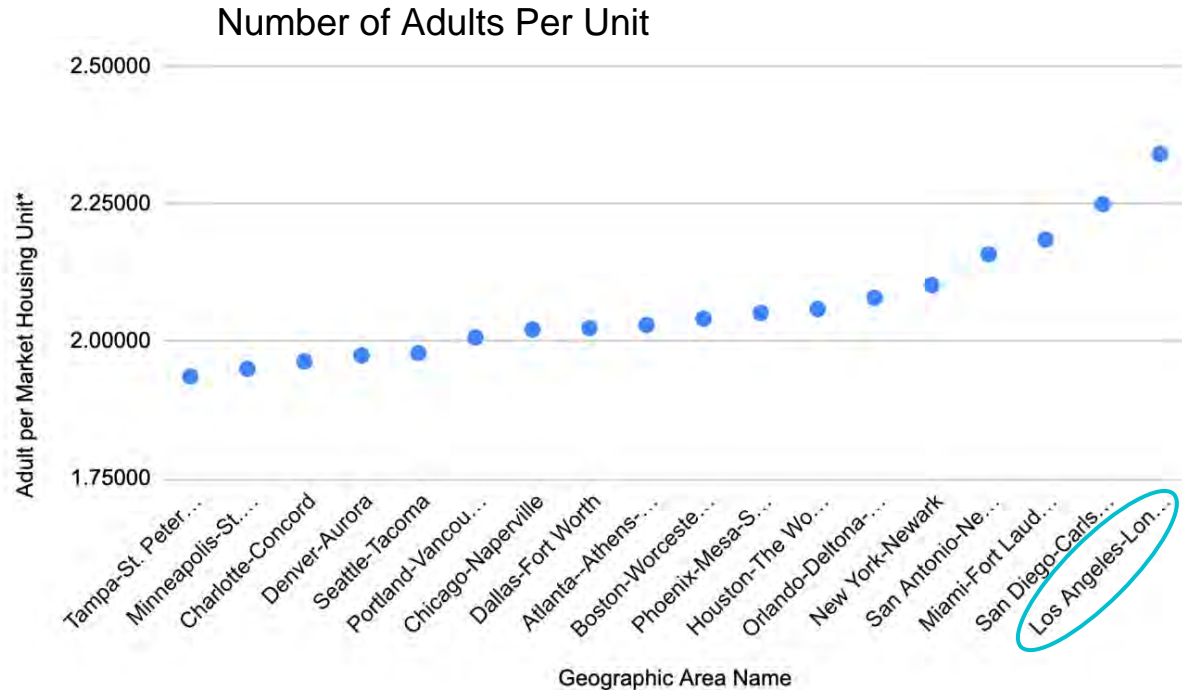
Most Severely Overcrowded: MSAs

Metropolitan Areas Over 500,000 (2018)



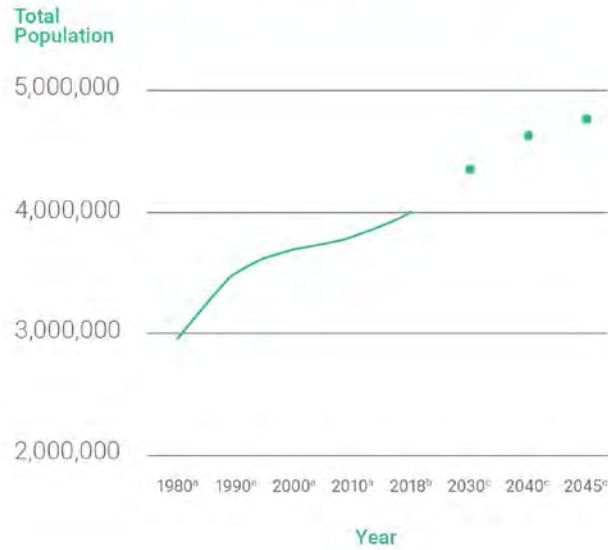
LA Has the Fewest Homes/Capita in the Country

If the City of Los Angeles had the same number of homes per adult as the national average it would have an **additional 130,000 homes.**



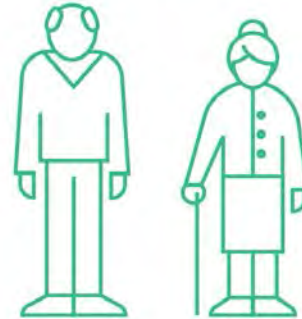
Demographics

Population Growth Up from Last Decade & Projected to Grow Faster

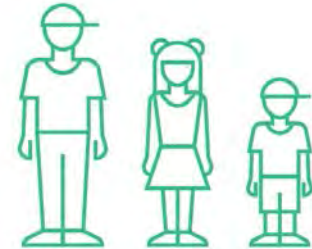


Angelenos are Aging

Between 2000 and 2018...



The population of seniors ages 55-75 increased 37%



The population of children ages 0-19 declined 16%

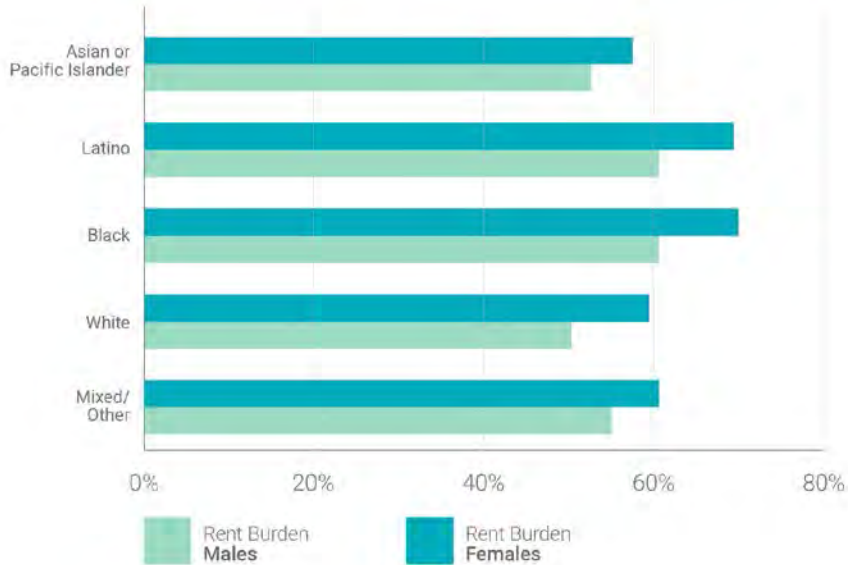
Source: U.S. Census Bureau, 2014-2018 American Community Survey 5-Year Estimates/Bureau of Census, Decennial Census 2000, Summary Tape File2, H30

^a US Decennial Census
^b Source: U.S. Census Bureau 2018 American Community Survey 1-Year Estimates
^c SCAG 2020 RTP/SCS

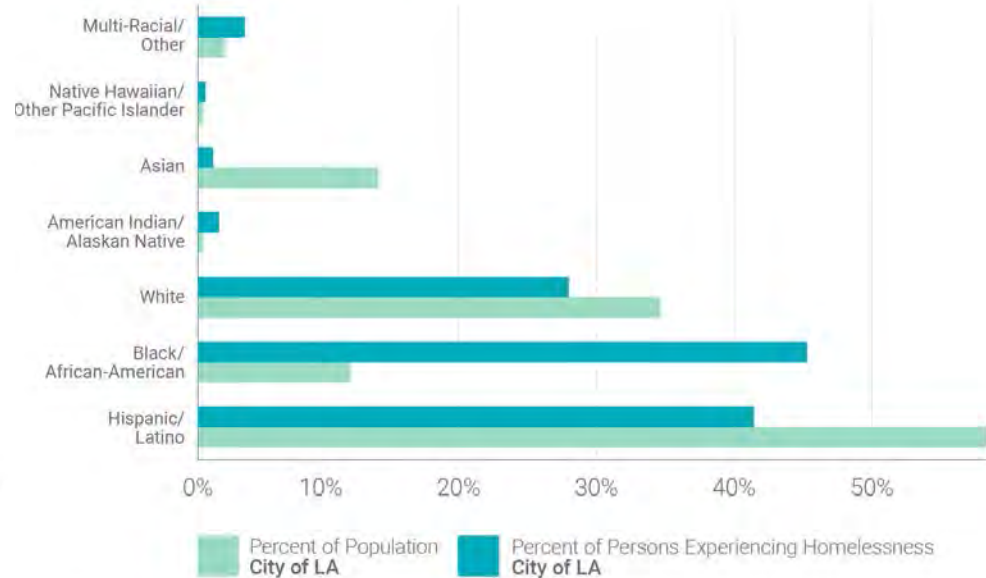
Impacts Are Felt Most Dramatically Among Women and People of Color

Visit our [Digital Workshop](#) for more data and background on the current Housing Element

Rent Burden in LA by Race/Ethnicity and Gender



Homelessness in LA



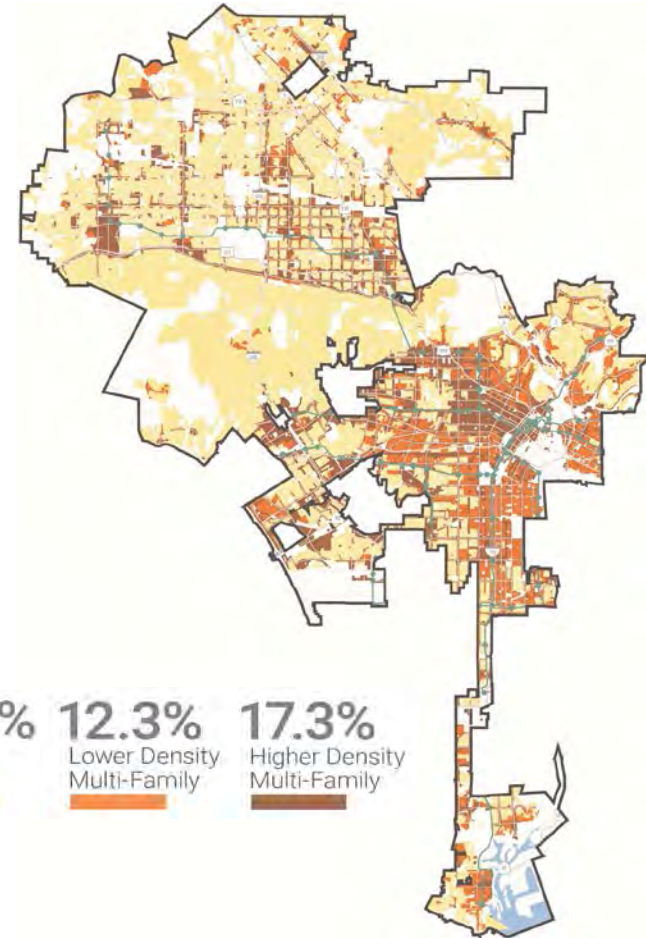
Housing Barriers

Lack of **financial resources** for affordable housing


Lack of **suitable land** where affordable housing can be built

Cumbersome and costly **process**

+ **Loss** of affordable housing



Regional Housing Needs Assessment (RHNA)

The background of the slide features a blue-tinted aerial view of a city. In the foreground, a large, white, classical-style building with two prominent domes sits atop a grassy hillside. The city skyline, with various skyscrapers, is visible in the distance behind the building.

RHNA Allocation and Site Inventory Process

HCD Issues
Regional
Determination

*1,341,827 unit
determination*

SCAG Develops RHNA
Allocation Methodology

***Factors:** projected growth,
greenhouse gas, jobs access,
transit access, social equity*

SCAG Issues
RHNA Allocation
to Jurisdictions

Each jurisdiction must
identify **sufficient sites**
to meet its RHNA or
rezone within three
years to meet the
shortfall

Regional Housing Needs Assessment (RHNA)

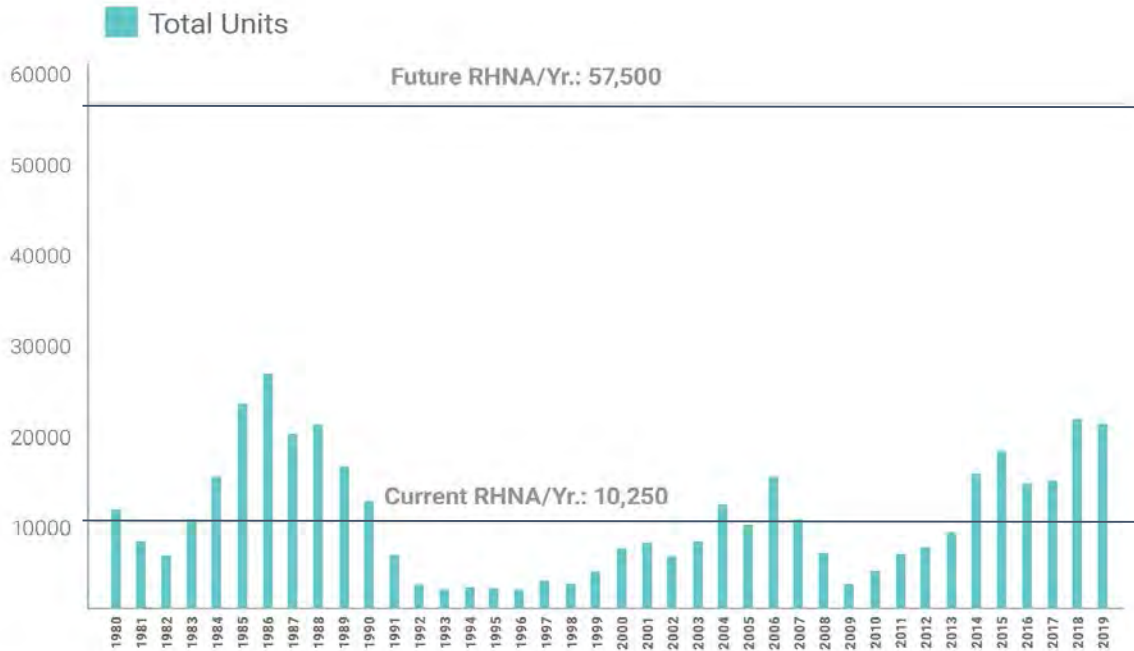
How much housing do we need to plan for?

		2013- 2021 Allocation	2021-2029 *Draft
		Projected Needs	
Existing Needs (NEW)			
Units in SCAG Region		421,137	1,341,827
Units in Los Angeles		82,002	*455,577
Lower Income Units in Los Angeles		32,862	*184,270

*All LA City 2021-2029 figures are estimated, based on the 9/3/20 draft allocation. A final allocation is expected in February 2020.

How much more housing?

Housing Units Permitted, Compared to RHNA Goals



To reach our estimated RHNA target, Los Angeles would need to permit an average of **57,000 units each year.**

Affordable Housing

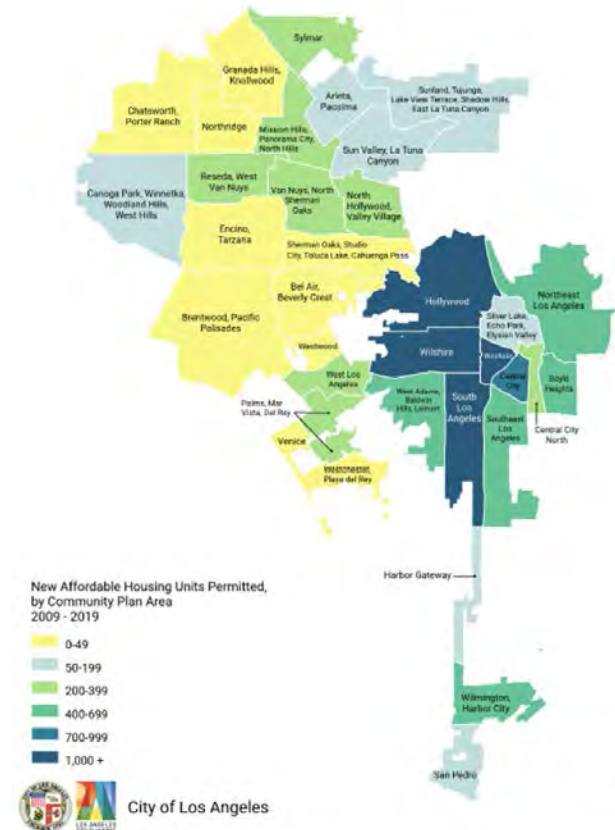
Affordable housing is **up** but not enough

Mixed-income developments are playing an increasingly important role in creating affordable housing

Affordable Housing Production, 2009-2019. by Source of Affordability



New Affordable Housing Units Permitted, by Community Plan Area, 2009-2019



RHNA Site Selection

Site Selection Background

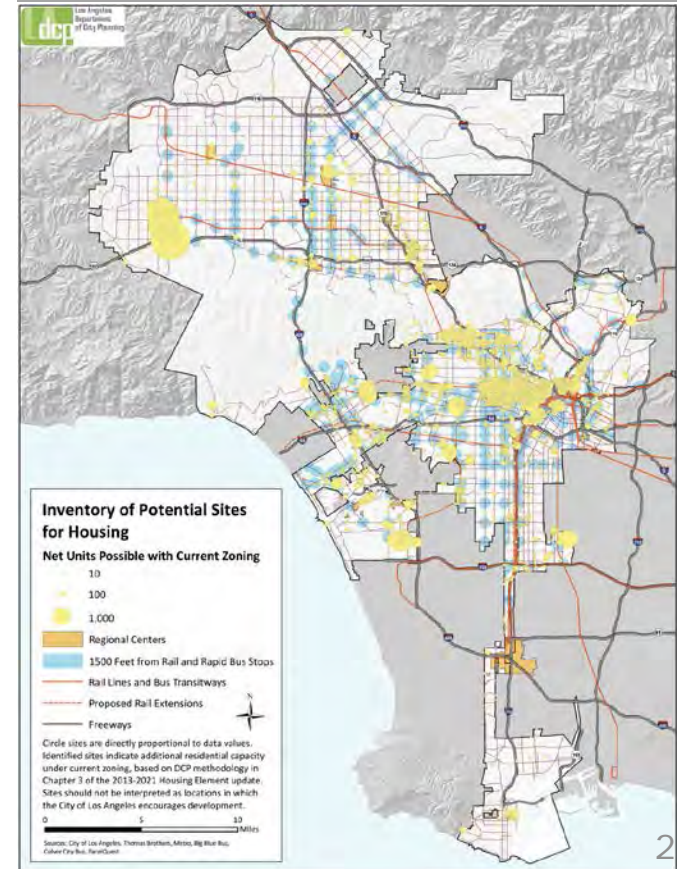
A City must identify enough suitable sites to meet the RHNA, or re-zone within 3 years.

Available and suitable sites must:

- Reflect “**realistic capacity**”
- Be **likely to redevelop (NEW)**
- **Affirmatively Further Fair Housing (NEW)**, or create a program to address

The lower-income portion of the RHNA must be zoned at densities (30u/acre) to allow for affordable housing

Sites Identified in the 2013-2021 Housing Element



Site Selection and Rezoning

- Site selection is a reflection of **existing zoning/capacity**
- If there are not adequate sites to accommodate the RHNA, **rezoning** must occur within **three years** (2024)
 - Community Plan updates
 - Other rezoning programs
- RHNA related rezonings will **affirmatively further fair housing (AFFH)**

In Progress

Central
Downtown (Central City, Central City North) | Hollywood

East
Boyle Heights

South Valley
Canoga Park - Winnetka - Woodland Hills - West Hills | Encino - Tarzana, Reseda - West Van Nuys | North Hollywood - Valley Village | Sherman Oaks - Studio City - Toluca Lake - Caluenga Pass | Van Nuys - North Sherman Oaks

West Los Angeles
Venice | Palms - Mar Vista - Del Rey | Westchester - Playa Del Rey | West Los Angeles

Harbor
Harbor Gateway | Wilmington-Harbor City

Upcoming

Central
Wilshire | Westlake

East
Northeast Los Angeles | Silver Lake | Echo Park | Elysian Valley

North Valley
Arleta - Pacoima | San Valley - La Tuna Canyon | Sunland - Tujunga - Lake View Terrace - Shadow Hills - East La Tuna Canyon | Chatsworth - Porter Ranch | Northridge | Mission Hills | Panorama City - North Hills

West Los Angeles
Bel Air - Beverly Crest | Brentwood - Pacific Palisades | Westwood

Completed

North Valley
Granada Hills - Knollwood | Sylmar

South Los Angeles
West Adams | South Los Angeles | Southeast Los Angeles

Harbor
San Pedro



From Developing a Vision to Draft Concepts

Vision Summary

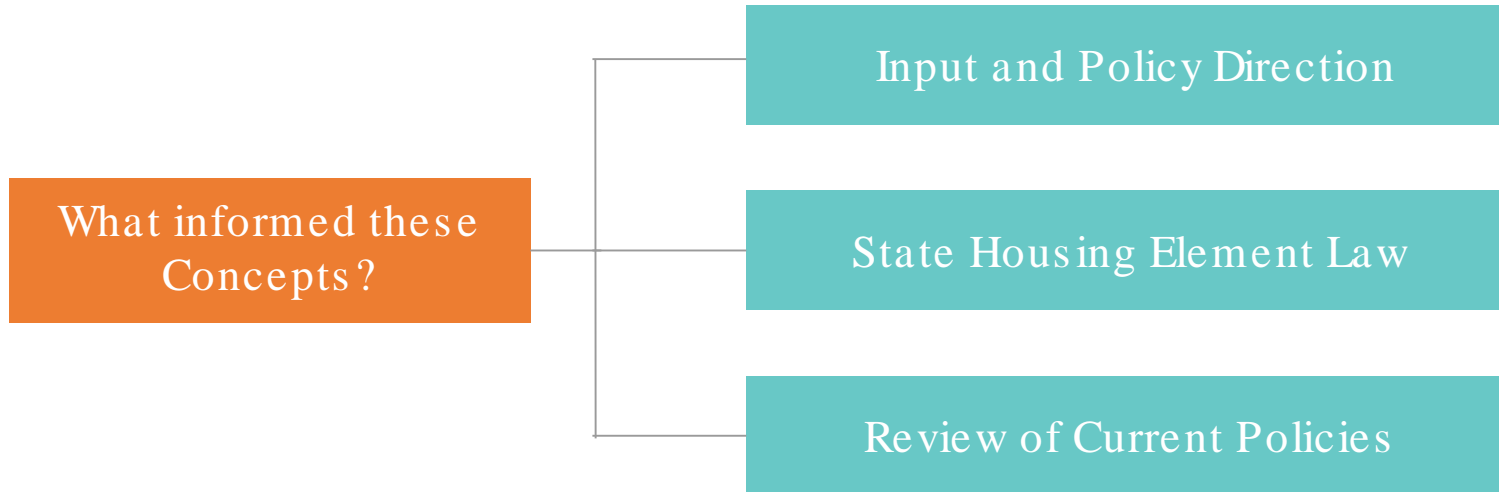
- Protect Renters & Prevent Displacement
- Produce More Housing, Especially Affordable Housing
- Plan and Zone for Inclusive Communities
- Prioritize the Most Vulnerable
- Address the Homelessness Crisis
- Promote Livable and Resilient Neighborhoods
- Promote More Affordable Ownership Opportunities



[View the post-vision outreach summary here](#)

Housing Element Concepts

Six Concepts were developed to help guide **“How we want the Housing Element to address the housing related issues in LA”**



Progress Since the Last Housing Element

- Resources for Housing
 - Affordable Housing Linkage Fee
 - Measure HHH and H
 - Greater use of public land
- Homelessness
 - Comprehensive Homeless Strategy
 - Emergency Shelter Ordinance
 - State Law Exemptions
 - Supportive Housing/Motel Conversion Ordinances
- Production
 - Transit Oriented Communities (TOC)
 - Accessory Dwelling Units (ADUs)
 - Value Capture
- Preservation
 - Replacement requirements
 - Home-Sharing Ordinance
 - Unapproved Dwelling Units (UDU)
- Tenant Protections:
 - Right to return
 - Source of income protection
 - Strengthen Ellis Act
- Community Plans and Transit Neighborhood Plans
- Urban Design Studio/Citywide Design Guidelines
- Parks Fee
- *LA Sustainability pLAN/Green New Deal*
- *Resilient LA*

What are the Overarching Priorities for each of the Concepts?

Addressing the Housing Shortage

Advancing Racial Equity & Access to Opportunity

Promoting Sustainability & Resilience

Balancing Production, Preservation and Protection

Housing Element “Concepts”



Housing Stability &
Anti-Displacement



Housing
Production (Esp.
Affordable)



Access to
Opportunity



Prevent and End
Homelessness



Built Environment
(Health, Livability,
Sustainability)



Meeting the
Unique Needs
of All
Angelenos

Concepts to Goals, Objectives, Policies and Programs

Concepts established areas to focus attention

Goals, Objectives and Policies

- Guides future policy and programmatic development
- Guides review of discretionary projects

Programs

- Establish an action plan to meet our housing needs
- Establishes metrics for program implementation that are reported annually

Next Steps

Next Steps

Continue to gather feedback on the Concepts

Develop draft Goals, Policies, and Programs

Develop Site Selection and rezoning programs.

Release Draft Plan this Spring



Resources Available Online



Draft Plan Materials

Outreach and community engagement are fundamental to the Housing Element update. Find materials from each phase of outreach below.

- Post-Vision Outreach and Comment Summary (PDF)
- Vision Digital Workshop
- Concepts Webinar Recording
- Concepts Webinar Presentation (PDF)
- Vision Webinar Recording
- Vision Webinar Presentation (PDF)



Housing Resources

Below are the City's resources for securing housing and protecting tenant's rights.

- Affordable Housing Listserv
- Covid-19 Resources
- Rent Income Schedule
- Information on Renter Protections
- Current and Proposed Housing Policy



Task Force

The Housing Element is guided by a **Task Force** of housing professionals and community leaders. Find summaries from Task Force meetings below.

- Meeting Summary- October
- Meeting Summary- July
- Meeting Summary- May
- Meeting Summary- April
- Meeting Summary- January
- Announcement of Task Force Members

Visit: planning4la.org/plan2housela

Quick Links:

[Resource Folder](#)

[Vision Digital Workshop](#)

[Vision Webinar Recordings \(English and Spanish\)](#)

[Task Force Meeting Summaries](#)

[Vision Feedback and Comment Summary](#)

[Concepts Webinars](#)

[Concepts Survey](#)

[Notice of Preparation for the EIR](#)

The Plan to House LA

Housing Element Update 2021-2029



Get involved!

**LEARN MORE & SIGN UP
FOR UPDATES AT**

<https://planning4la.org/Plan2HouseLA>

Sign up for
our email list

Attend a
Webinar

Share your
input on our
surveys

Spread the
word

Questions?

Matthew.Glesne@lacity.org

housing.element@lacity.org

Civic
Engagement

Compromiso
civil

LAC+USC Campus Civic Arts

**Artes cívicas del campus de LAC +
USC**

Iris Regn, LA County Department of Arts and Culture

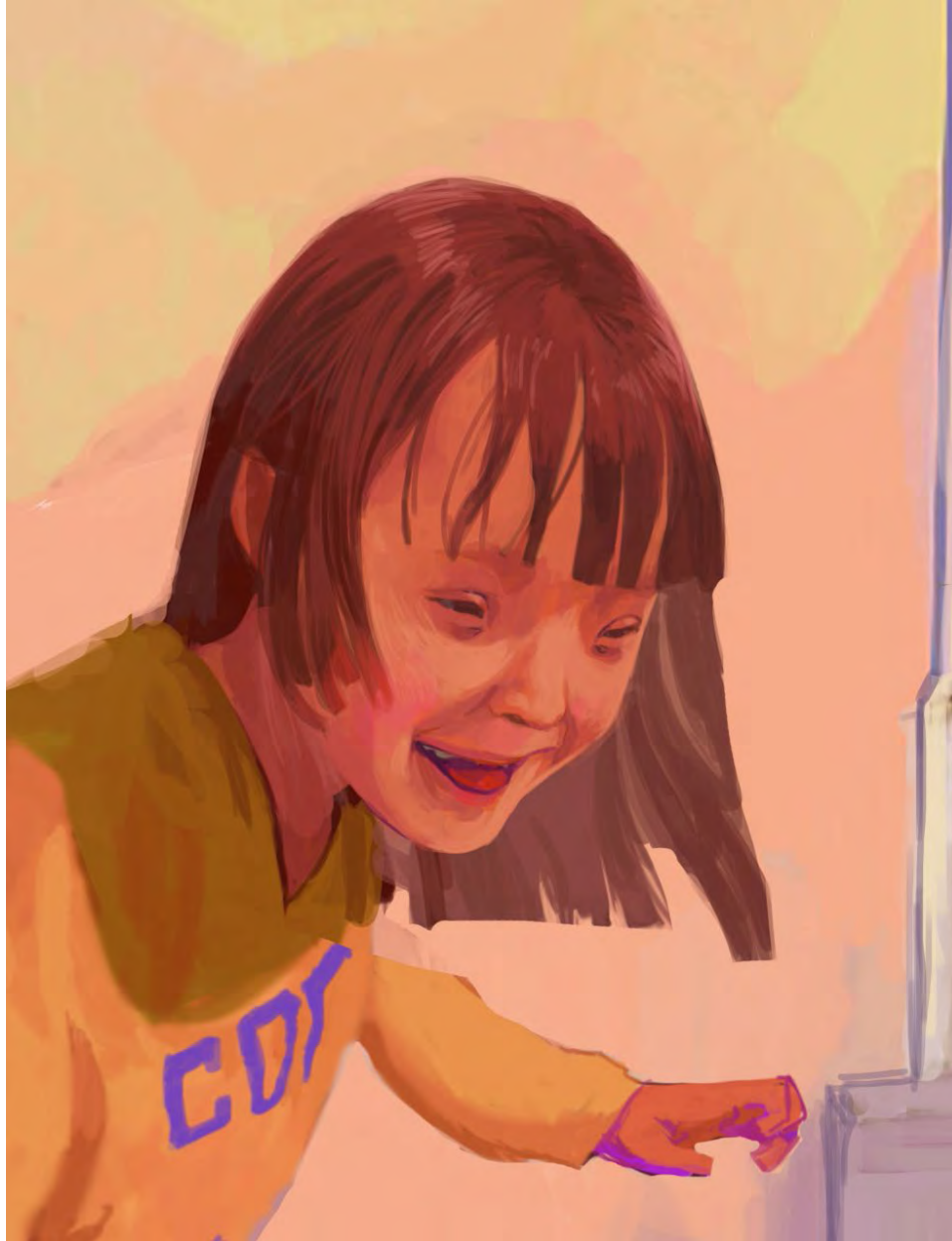


- Welcoming, inclusive, reflective of local community
- Energetic, hopeful, playful, accessible to children
- Inspiring trust, reassuring, healing, warm [colors]

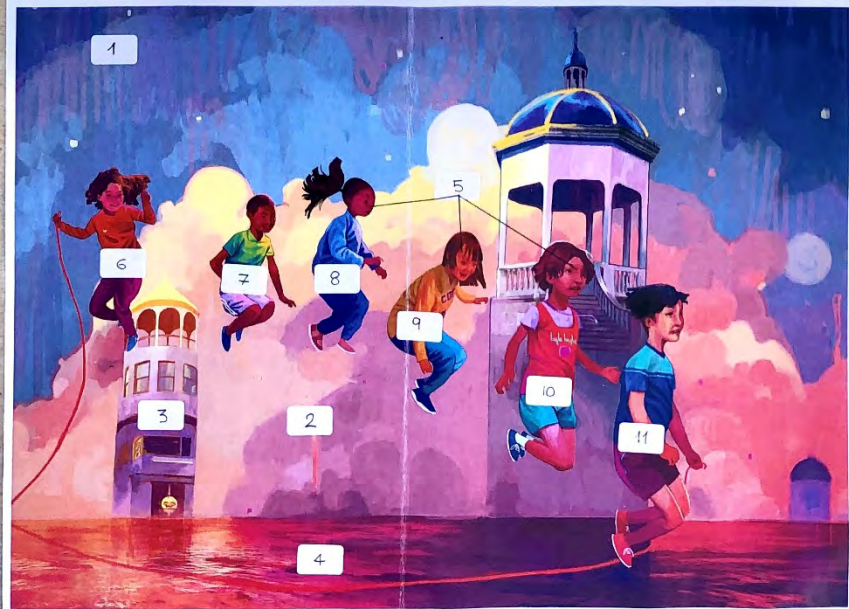




LAC+USC CHILD CARE CENTER: FINAL DESIGN FOR MURAL



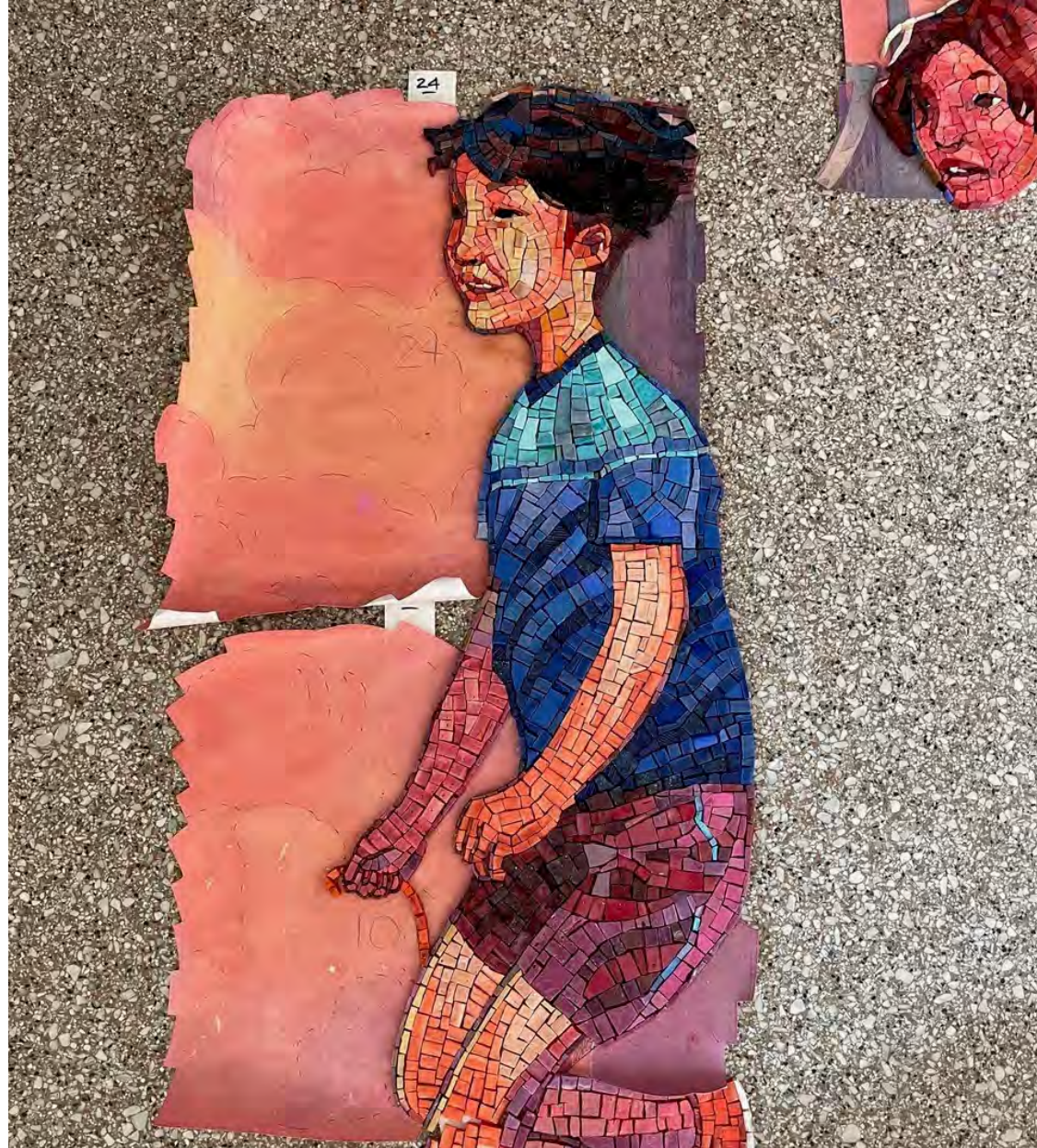
LAC+USC CHILD CARE CENTER: MURAL DETAIL



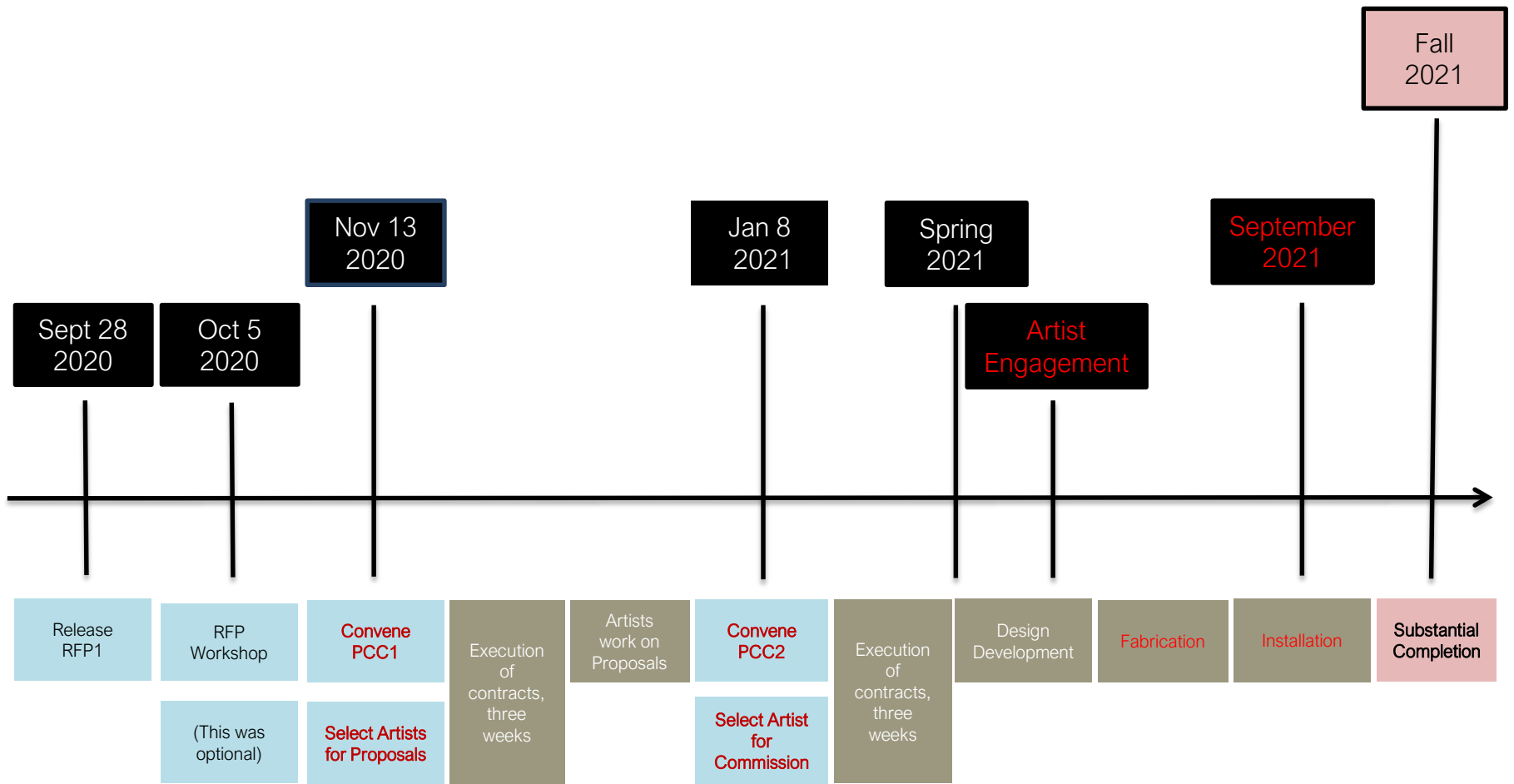
LAC+USC CHILD CARE CENTER: GLASS MOSAIC



LAC+USC CHILD CARE CENTER: MOSAIC DETAIL



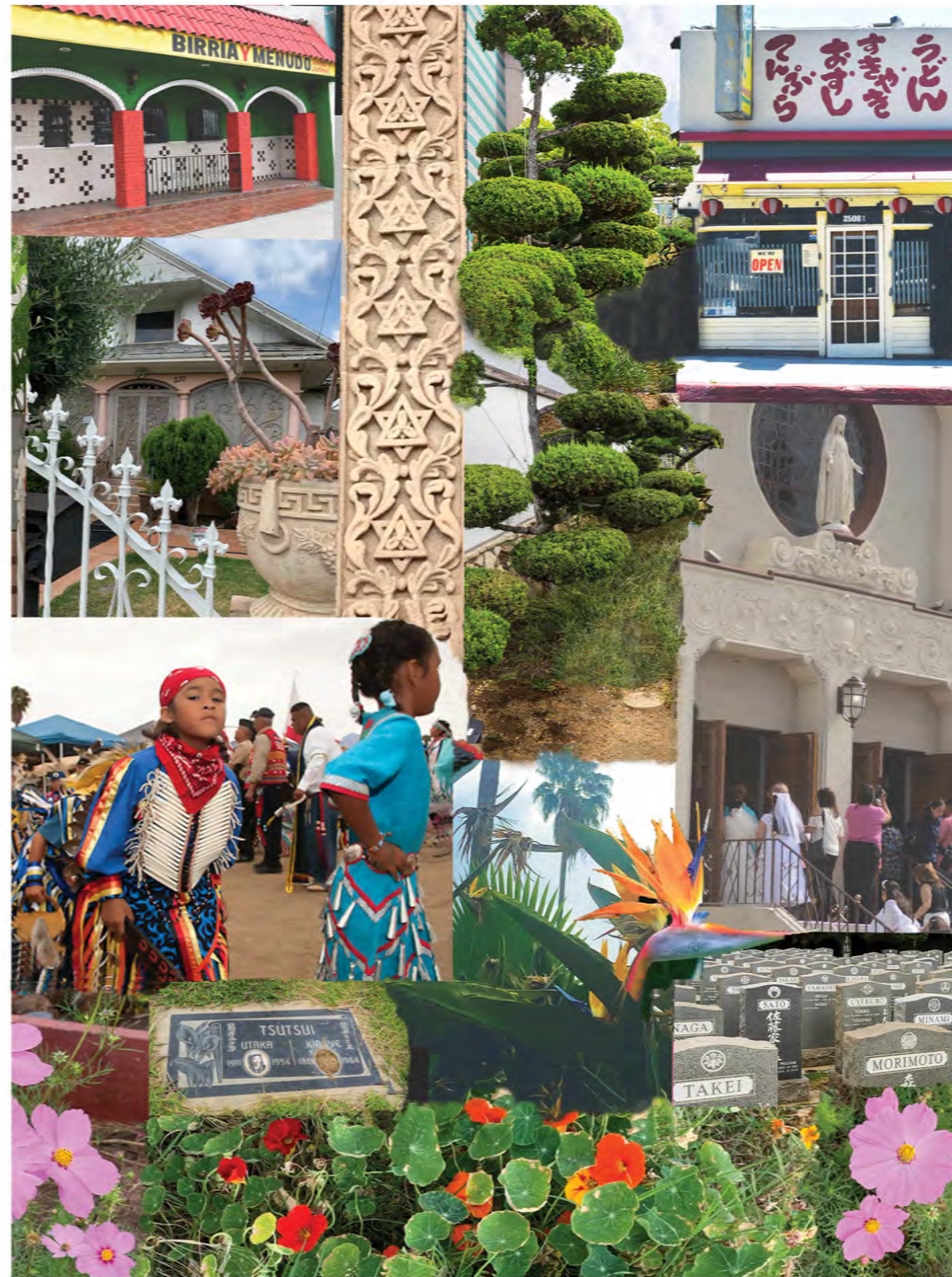
LAC+USC CHILD CARE CENTER: JUMPING BOY WITH ROPE AND GIRL



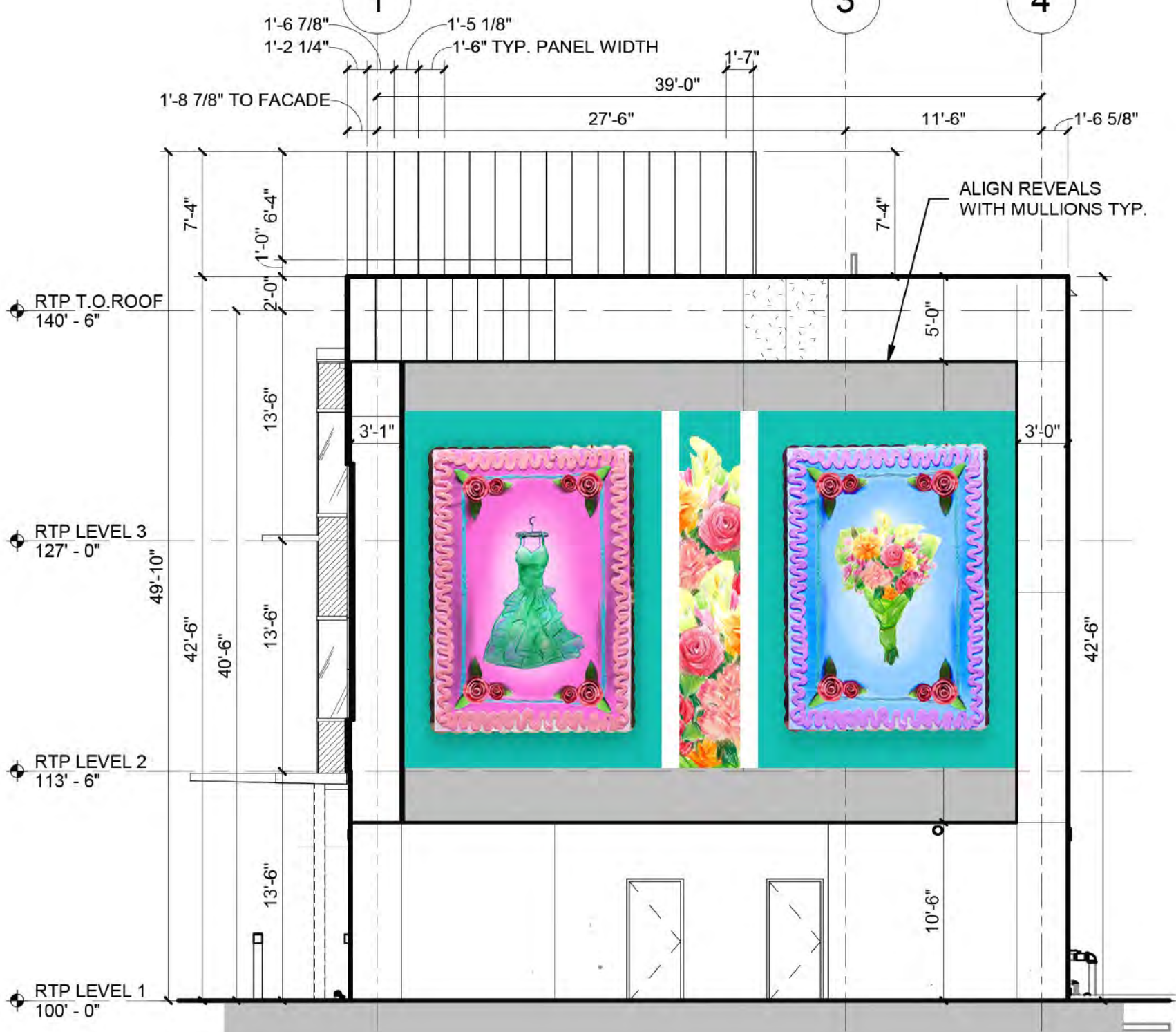


Restorative Care Village
seen from Zonal Avenue











Star Montana - LAC+USC Restorative Care Village



RCC

RTP A
LHS

RTP B
JS

RTP C
PM

RTP D
SM

ZONAL AVENUE

N STATE STREET



THANK YOU

Feel free to send questions and comments to:
iregn@arts.lacounty.gov

Partner
Announcements
Anuncios de socios

Meeting Feedback Poll

Encuesta de reunión

Next Meeting:
Friday, June 4, 2021

Próxima reunión: viernes
4 de junio de 2021

www.hicpla.org

HHEALTH
IINNOVATION
CCOMMUNITY
PPARTNERSHIP