

HEALTH INNOVATION COMMUNITY PARTNERSHIP

Monthly Meeting
February 5, 2021

Reunión mensual
5 de febrero
de 2021



Agenda

8:45	Welcome, Meeting Overview and Guiding Principles	Bienvenida, resumen de la junta y principios rectores
8:50	RCV Permanent Supportive Housing Update	Actualización de vivienda de apoyo permanente de RCV
9:00	Mental Health During COVID	Salud mental durante COVID
9:15	COVID Vaccine Roll-Out	Lanzamiento de la vacuna COVID
9:35	LAC+USC Medical Center Update	Actualización del Centro Médico LAC + USC
9:50	Workforce Development	Desarrollo de la fuerza laboral
10:10	Housing Projects Update	Proyectos de vivienda
10:25	LAC+USC Campus Projects	Proyectos Campus LAC + USC

LAC+USC

Restorative Care Village Permanent
Supportive Housing

**Restorative Care Village Vivienda de
apoyo permanente**

*Lynn Katano, Fernanda Palacios and Matt Lust, Los
Angeles County Development Authority*

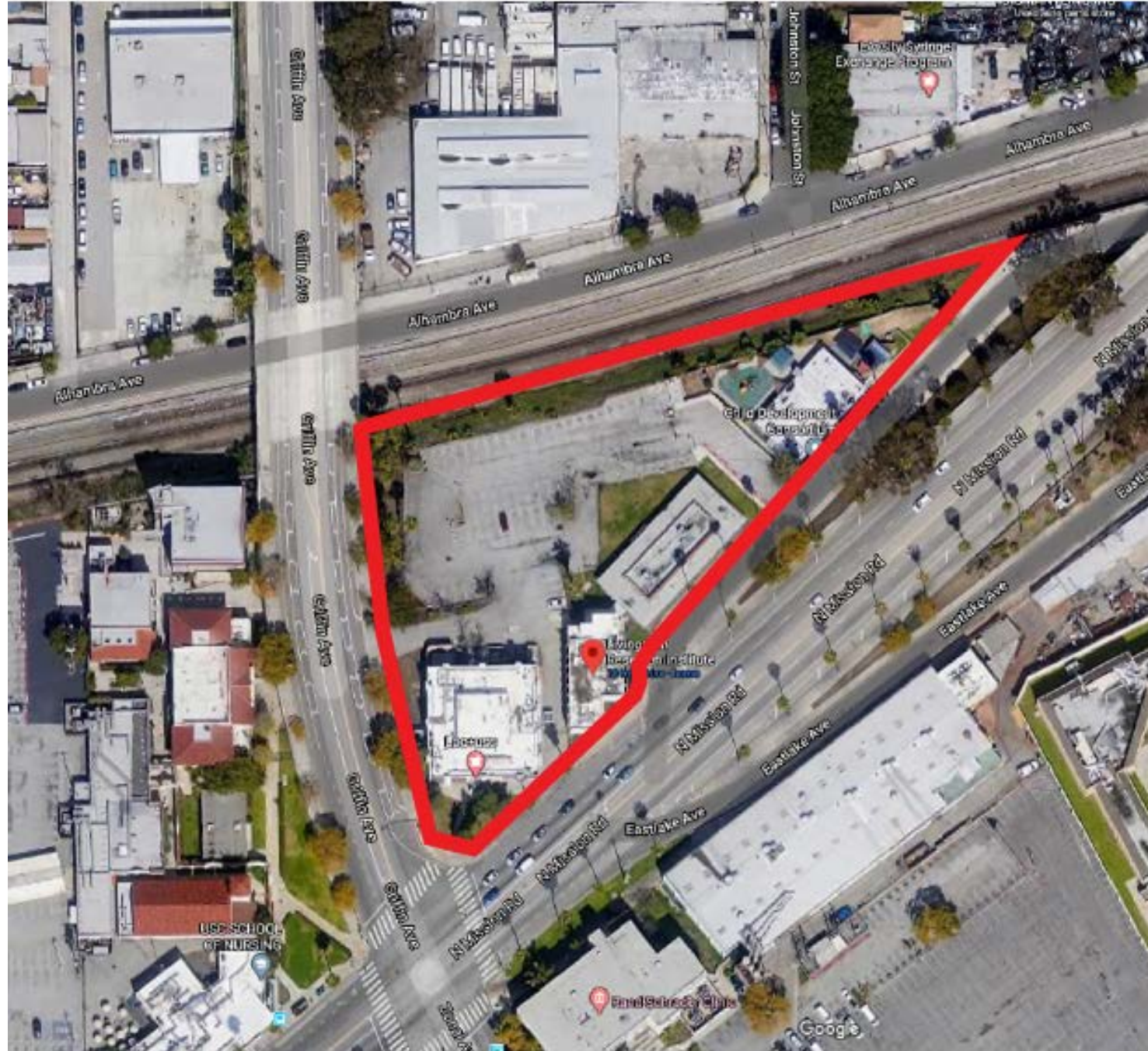


Permanent Supportive Housing Request for Proposals

Health Innovation Community Partnership (HICP) Meeting

February 5, 2021

Site Characteristics



- Site owned by the County of Los Angeles (located in City of Los Angeles)
- Four parcels ~ 2.3 acres (100,268 sf)
- Triangular shape - bounded by Alhambra Avenue, Mission Road, and Griffin Avenue
- Contains four structures associated with LAC+USC Medical Center (three medical research buildings and a Child Care Center)
- Historical uses include manufacturing and industrial - Phase II underway to determine if environmental remediation is required
- EIR for LAC+USC Medical Campus – identifies site as workforce housing

RFP Objectives

- Solicit qualified developer to construct and operate a permanent supportive/affordable housing project that will serve homeless populations who would qualify under the No Place Like Home (NPLH) Program
- Project may also serve:
 - Homeless veterans
 - General special needs populations
 - Low-income seniors and families
- RFP will award NPLH Program funding and Section 8 Project-Based Vouchers for rental assistance

Next Steps

- Phase II Report findings - County Department of Public Works estimates report to be complete by March 2021
- Formation of HICP working group for RFP review
- Receive feedback from working group regarding RFP and options for development of the site
- Issue RFP

Estimated RFP Timeline

Activity	Date
Phase II Results/Working Group Comments on RFP	April 2021
Release Request for Proposals	May 2021
Mandatory Pre-Proposal Conference	June 2021
Issue Q&A	June 2021
Proposals Due	June 2021
Select Proposer	September 2021
County Board Approves ENA	November 2021

COVID-19

Update on Mental Health During
COVID-19

**Actualización sobre salud mental
durante COVID-19**

*Dr. Jorge Partida, Chief of Psychology, LA County
Department of Mental Health*



COVID-19 Vaccine Update

February 5, 2021





Disclaimer

- Information about COVID-19 and vaccination changes frequently.
- This information was current as of 2/3/20.

For up-to-date information please visit:

[VaccinateLACounty.com](https://www.vaccinatelacounty.com)



Vaccine Distribution Plan

Phase 1 Began: Mid-December Estimated everyone will have been offered at least one dose: Late Jan/Early Feb.*		<ul style="list-style-type: none"> • Healthcare workers (who have the potential for direct or indirect exposure to patients or infectious materials) • Long-term care residents
Phase 1B Estimated to begin: Early Feb. Estimated everyone will have been offered at least one dose: Late March*	Tier 1	<ul style="list-style-type: none"> • Persons 75 years and older • Those at risk of exposure at working the following sectors: <ul style="list-style-type: none"> • Education • Childcare • Emergency services • Food and agriculture
	Tier 2	<ul style="list-style-type: none"> • Persons 65-74 years of age • Those at risk of exposure at work in the following sectors: <ul style="list-style-type: none"> • Transportation and logistics • Critical manufacturing • Industrial, commercial, residential, & sheltering facilities & services • Congregate settings with outbreak risk: incarcerated & homeless
Phase 1C Estimated to begin: March Estimated everyone will have been offered at least one dose: Late April/Early May*		<ul style="list-style-type: none"> • Persons 50-64 years old • People 16-49 years of age and have an underlying health condition or disability which increases their risk of severe COVID-19 • Those at risk of exposure at work in the following sectors: <ul style="list-style-type: none"> • Water and wastewater • Defense • Chemical and hazardous materials • Energy • Communications and IT • Financial services • Government operations / community-based essential functions
Phase 2 (Proposed) Estimated to begin: Mid-May/Early June*		<ul style="list-style-type: none"> • Persons 16-49 years old without high-risk medical conditions

*Timings are estimates and may change. The phases and tiers will overlap

*Proposed but not voted on by the CDC Advisory Committee on Immunization Practices (ACIP) and may be modified by CDC and/or CDPH



Current Phases

ACTIVELY VACCINATING

PHASE 1A

- **Healthcare Workers**
- **Staff & Residents at Skilled Nursing Facilities**
- **Staff & Residents at Long-Term Care Facilities**

PHASE 1B

Tier 1

- **LA County Residents 65 and Older**



Upcoming Phases and Changes

ESTIMATED TIMELINE FOR REST OF

PHASE 1B

February

Tier 1

- Education and Childcare
- Emergency Services
- Food and Agriculture

Tier 2

- Transportation and logistics
- Industrial, Commercial, Residential, and Sheltering Facilities and Services
- Critical Manufacturing
- Incarcerated Settings
- Homeless Settings

State Move to Age-Based Eligibility and Centralized Allocation and Distribution of Vaccine



COVID-19 VACCINATIONS IN LA COUNTY

AS OF JANUARY 29, 2021 (UPDATED WEEKLY)

DOSES ADMINISTERED*
AS OF 1/25/2021
790,902
Second Doses: 124,163

Year	Arrival week	Weekly Doses Arriving*	Cumulative Doses in County*	Cumulative # of Doses Administered**	% of Doses Administered
2020	14-Dec	82,875	82,875	63,566 (as of 12/24)	76.7
2020	21-Dec	165,350	248,225	114,522 (as of 12/31)	46.1
2020	28-Dec	109,325	357,550	217,831 (as of 1/7)	60.9
2021	4-Jan	133,575	491,125	344,563 (as of 1/14)	70.2
2021	11-Jan	193,950	685,075	441,430 (as of 1/21)	64.4
2021	18-Jan	168,575	853,650	719,138 (as of 1/28)	84.2
2021	25-Jan	146,225	991,375		



COVID-19: Vaccine Dashboard



Administered

3,984,752

County

(All) ▼

Doses Administered by County of Residence



Delivered *

6,438,225



Los Angeles 992,620

San Diego 401,463

Orange 328,874

Santa Clara 208,713

Riverside 186,977

San Bernardino 166,507

Alameda 159,398

Contra Costa 146,044

Sacramento 132,100

San Francisco 95,802

San Mateo 86,821

Ventura 83,819



Shipped *

6,965,675

CDC Long Term Care Facility Pharmacy Partnership **



813,150
Delivered

823,875
Shipped

* Doses shipped and delivered include doses that were distributed as part of the CDC Long Term Care Facility Pharmacy Partnership (LTCF) program to vaccinate residents at California's Skilled Nursing Facilities and other congregate living facilities. Data files downloaded from Operation Warp Speed Tiberius platform at 9am daily.

** CDC Long Term Care Facility Pharmacy Partnership Doses are subset of the total.

Data Last Updated on 2/3/2021 11:59pm



Vaccine Administration





Current Vaccination Sites

- **Point of Dispensing Sites (PODS)**
 - L.A. City Fire Department PODS
 - LAC Public Health PODS & Mega-PODS
- **Community Clinics & Hospitals**
- **Pharmacies**



LA City Vaccination Sites

Dodger
Stadium

Lincoln Park

Crenshaw
Christian
Center

San Fernando
Park

Hansen Dam
Rec Center

LA City Vaccine Registration Site:
<https://carbonhealth.com/covid-19-vaccines>



LA County Vaccination Sites

Mega PODs

The Forum

Cal State
University
Northridge

LACOE

Pomona
Fairplex

Magic
Mountain

PODs

Balboa Sports
Complex

El Sereno

**LA County Vaccine Registration Site:
[VaccinateLACounty.com](https://www.vaccinatelacounty.com)**

Mega PODs



Now Vaccinating

- 2,400 people a day per site

Capacity

- 4,000 people a day per site

Barrier

- Limited and unknown supply

Staff/Volunteers

- Approx. 1000/day



Community Clinics & Hospitals

Community Clinics and Hospitals Serving Community Members

- Hide

- Vaccination is offered by a variety of community healthcare partners including Federally Qualified Health Centers. Please check the listings carefully as some locations offer the *Moderna vaccine* and some offer the *Pfizer vaccine*.
- **All vaccinations are by appointment only.** Please be advised that Public Health is unable to provide information on appointment availability for the Kedren, UCLA, Culver City/West Side, and El Camino College locations.

St. Johns - Dr. Kenneth Williams Health Center

Pfizer

808 W. 58th St.
Los Angeles, CA 90037

Show on map

More appointments coming soon.

JWCH Wesley Health Center – Bellflower

Moderna

14371 Clark Ave
Bellflower, CA 90706

Show on map

More appointments coming soon.

For more information visit:

<http://publichealth.lacounty.gov/acd/ncorona2019/vaccine/hcwsignup/pods/>



Pharmacies

Pharmacies

- Hide

- Vaccination is offered at several pharmacy chains in Los Angeles County. The pharmacies all offer the *Moderna vaccine*.
- **Vaccinations are by appointment only:**
 - **Must be scheduled through each pharmacy's appointment system.**
 - **Second Dose appointments** will be scheduled while you are at your initial first-dose appointment.
 - Please be advised, Public Health is unable to provide information on appointment availability for Pharmacies.

Albertsons Pharmacies

+ View

Pavilions Pharmacies

+ View

Ralphs Pharmacies

+ View

Rite Aid Pharmacies

+ View

Vons Pharmacies

+ View

For more information visit:

<http://publichealth.lacounty.gov/acd/ncorona2019/vaccine/hcwsignup/pods/>



To Make an Appointment

VaccinateLACounty.com

The screenshot shows the website interface for booking a COVID-19 vaccine appointment. At the top, there is a search bar and social media icons for Instagram, Facebook, Twitter, and YouTube. The navigation menu includes links for COVID-19 Home, About COVID-19, Guidances, Protection, News Updates, and Help. The main heading is "COVID-19 VACCINE". Below this, there is a section for "Información en español". The primary action is a "Book an Appointment" button, with a note that "Appointments & Doses are Limited." Below this is a link to "Learn How to Secure Second Dose Appointments". To the right, there is a "Sign up for the VACCINE NEWSLETTER" section with an "Email Address" input field and a "Submit" button.

For those without access to a computer or the internet or with disabilities, please call us at: **833-530-0473 (open daily from 8am and 8:30pm)**



New Opportunities

- **Community Vaccination Site Pilot
FEMA and State of CA**
 - Cal State LA
 - 2 mobile vaccination clinics
 - Expected to open February 16th
 - Registration available on MyTurn
- **Federal Pharmacy Initiative**
 - Direct allocations each week
 - CVS and Rite Aide



Stay Informed

COVID-19 VACCINE

Sign up for the
Vaccine Newsletter at
VaccinateLACounty.com



 COUNTY OF LOS ANGELES
Public Health 

Follow DPH on Social Media
@lapublichealth



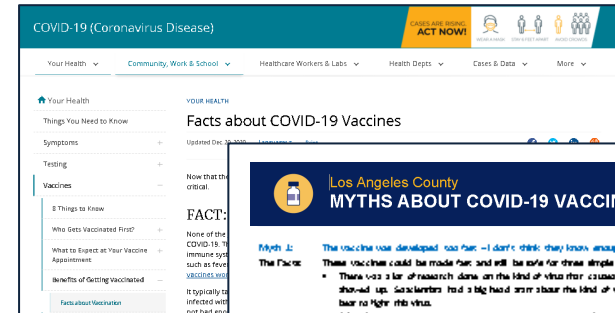
Watch Virtual Briefings
every Monday at 2pm

Beware of the myths. Get the facts!

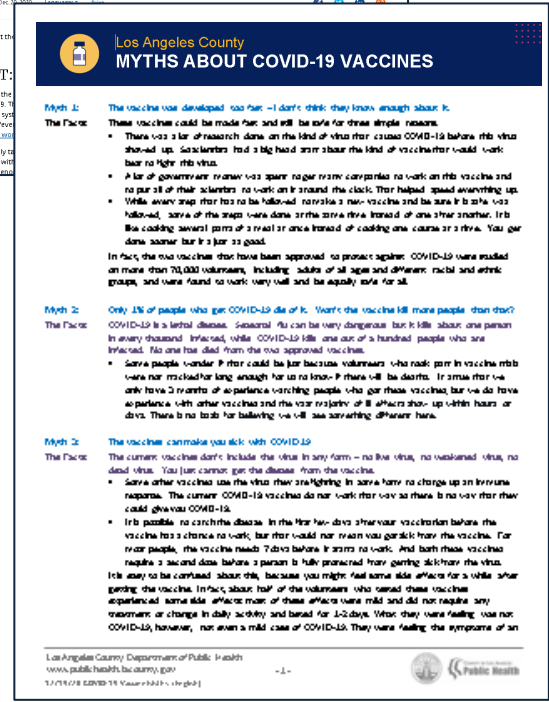
Common myths:

- It was developed too fast
- It will kill more people than COVID-19
- It can give you COVID-19
- It can affect our genes
- It contain dangerous chemicals
- It contains a micro chip that can be used to track my movements.
- It is being pushed on people against their will.
- You can't trust the people who made these vaccines.
- Black and Latinx communities are being singled out to get the vaccine
- I don't need the vaccine if I already had COVID-19

MYTHS!



CDC website



DPH website



When can I get the vaccine?



Sign up for COVID-19 vaccine notifications

Get notified when it's your turn to get the COVID-19 vaccine. If you're in Los Angeles or San Diego, you can also schedule your appointment.

[Sign up now](#)



<https://myturn.ca.gov/>

Community Engagement



- **Community Health Worker Outreach Initiative**
- **LA County COVID-19 Vaccine Workgroup & Committees**
 - **Ensuring Equity** in vaccine distribution for general populations
 - **Effective Communication** with sectors and residents for general populations
 - **Aligning Resources** to support massive vaccination administration
- **COVID-19 Vaccine Listening Sessions**
 - Healthcare workers
 - Community Health workers
 - Essential workers—manufacturing, food and agriculture, transportation
 - Communities of Color—AANHPI, Latinx, African American communities
 - People living with disabilities
 - People with underlying health conditions



COVID-19 DAILY UPDATE

Los Angeles County*

February 4, 2021

5,028

NEW CASES

(1,134,338 to date)

239

NEW DEATHS

(17,539 to date)

4,990

**CURRENT
HOSPITALIZATIONS**

Continue to take steps to stop the spread

While you wait for a vaccine and even after you are vaccinated it is important to:

- Wear a face covering
- Avoid close contact and crowded spaces
- Wash your hands often
- Clean and disinfect frequently touched surfaces
- **Follow isolation and quarantine guidance**



Getting 'Back to Normal'
Is Going to Take **All of Our Tools**

If we use all the tools we have, we stand the best chance of getting our families, communities, schools, and workplaces "back to normal" sooner:

- Get vaccinated.
- Wear a mask.
- Stay 6 feet from others, and avoid crowds.
- Wash hands often.

 www.cdc.gov/coronavirus/vaccines

12/09/20

More information from DPH



- **Dial 2-1-1**
 - Links you to health and human services
 - Available 24/7 in many different languages



- **Visit our website** publichealth.lacounty.gov



- **Send an email** phinfo@ph.lacounty.gov

- **Follow us on social media:**



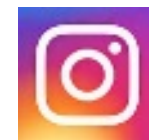
- www.facebook.com/lapublichealth



- www.twitter.com/lapublichealth



- www.youtube.com/lapublichealth



- @lapublichealth

Questions



COVID-19

LAC+USC Medical Center
Update

**Actualizaciones del Centro Medico de
LAC+ USC**

Jorge Orozco, Chief Executive Officer

Workforce
Development

Desarrollo de la
fuerza laboral

Workforce Development Opportunities
Update

**Actualización de oportunidades de
desarrollo de la fuerza laboral**

*Isidro Villanueva, LA County Workforce Development,
Aging and Community Services (WDACS)*

Pathways for Economic Recovery in LA County



wdacs
workforce development
aging & community services



Institute for Applied Economics



Economic Impact of COVID-19

716,000

Jobs initially were lost in LA County from Safer @Home

30%

Jobs recovered

500,000

Jobs remain unrecovered

28%

Decline in the # of open small Businesses in LA County

15,000

Businesses in LA that have reported closure from March – August

738,672

Living Wage Jobs need to be created

Occupations **Projected** to be in Demand

Growing Industries:

- **Construction**
- **Healthcare**
- **Public Administration**
- **Personal Services**
- **Advanced Manufacturing**
- **Transportation and Logistics**

Middle skilled in-demand jobs:

- **Medical Assistants, Nurses, Patient Care, Budgeting, Project Managers, Information Clerks, Laborers & Movers, Truck Drivers, Supply Chain Strategist, Welding, Carpenters, Electricians,**

Middle-Skill Occupations	Projected Jobs Added 2020-2024
Laborers and Freight, Stock and Material Movers	9,110
Heavy and Tractor-Trailer Truck Drivers	8,240
Registered Nurses	7,870
First-Line Supervisors of Food Preparation and Serving Workers	7,070
Customer Service Representatives	5,340
Secretaries and Administrative Assistants, Except Legal, Medical, and Executive	5,100
Medical Assistants, Medical Secretaries & Administrative Assistants	4,530
Stockers & Order Fillers	3,460
Postal Service Mail Carriers	2,890
Construction Laborers	2,590
Electricians	1,770
First-Line Supervisors, Const Trades/Extraction Workers	1,390
Plumbers, Pipefitters, and Steamfitters	1,220

Healthcare & Social Services Industry

As of November 2020, offering 9,905 job openings

Workers interested in securing jobs in the healthcare and social services industries would benefit in developing specialized skills in:

Patient Care;
Scheduling; and
Cardiopulmonary Resuscitation (CPR).

Healthcare: COVID-19 Vaccine

Community Organized Relief Effort CORE

Los Angeles County:

- **Program Associate**
(Spanish/ Chinese a plus)
- **Inventory Assistants**
- **Community Mobilizer**

Los Angeles (City):

- **Community Canvasser**
- **Program Associate**

Healthcare: COVID-19 Vaccine

CVS Health, County of Los Angeles Workforce Development, Aging, and Community Services, and Los Angeles County America's Job Centers of California are collaborating to support CVS Health to fulfill the urgent need for Pharmacy Technicians at various CVS and Target locations throughout LA County.

**CVS Health Pharmacy Tech
Career Virtual Orientation**

**Every Wednesday
(starting 02/ 10/ 2021)**

1:00 PM to 2:00 PM

Regional Strategy: Building Regional Capacity

On Tuesday February 2, 2021. Community Colleges and WDACS convened to develop and implement a successful regional strategy to move our healthcare workforce forward.

Pharmacy Technician Pipeline

- CVS Health
- Walgreens
- Los Angeles County
- AltaMed?

Thanks!

- Full report live next week
- Social media: @LACBIZDEV



Housing

Vivienda

Vignes Street Housing Project Update

Actualización del proyecto de Vignes Street

Soheila Kalhor, P.E., M.S., Los Angeles County Public Works



VIGNES STREET HOUSING PROJECT

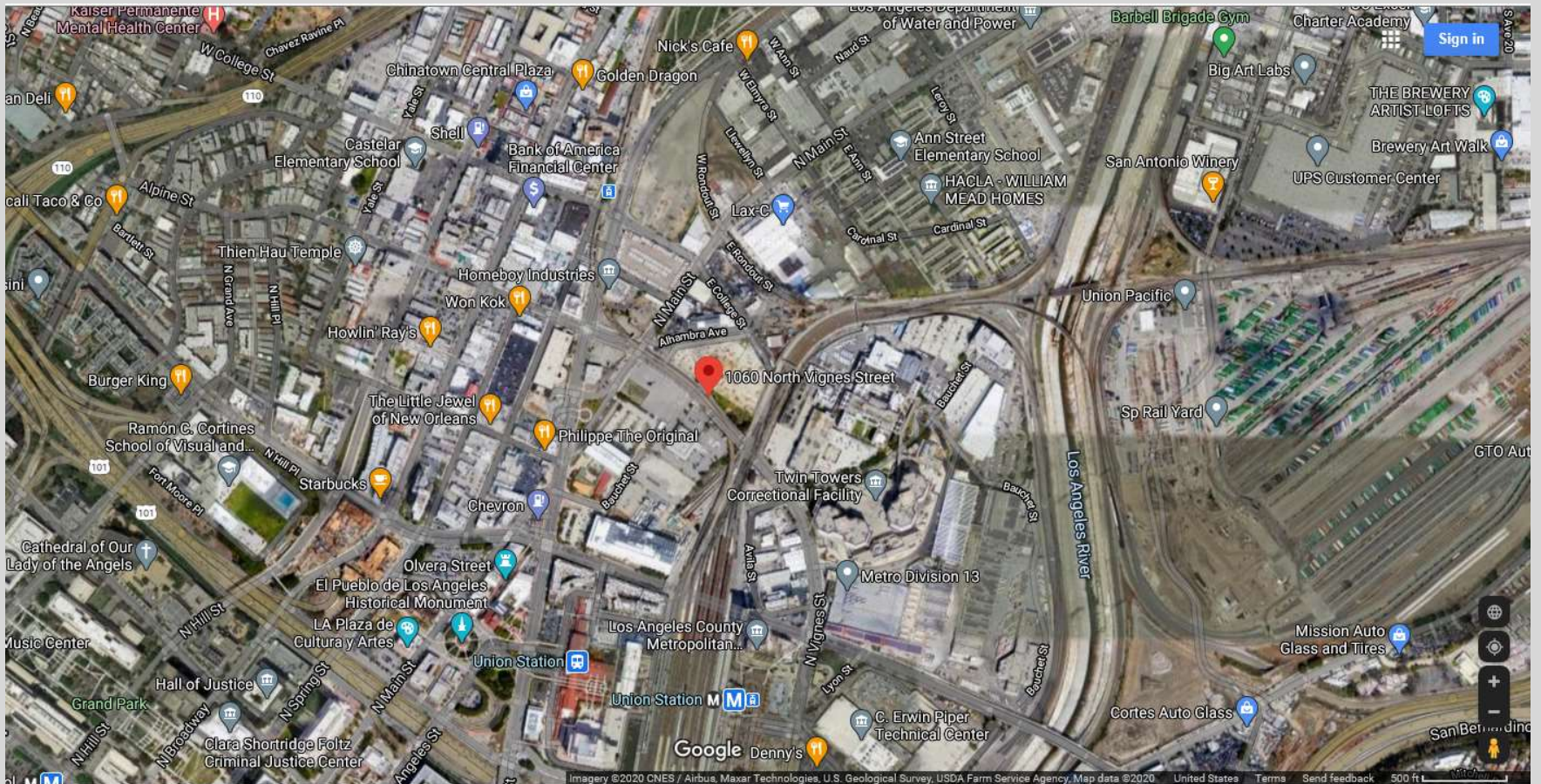
February 5, 2021

Presented to Health Innovation Community Partnership

Project Overview

- Board of Supervisors passed a Motion on 9/29/20 to transform the Vignes site into a 232-bed housing project for people experiencing homelessness that are most vulnerable to COVID-19 in Los Angeles County.
- Project is funded by CARES Act Funding which mandated the facility to be occupiable by 12/30/20. The deadline has since been extended.
- Vignes Team had 90 days to substantially deliver the project. Due to the deadline extension, the project will be substantially complete by 2/28/21.
- County took jurisdiction and plan check all onsite work.
- City of Los Angeles has been assisting with expediting all offsite work.
- City of Los Angeles will operate and provide supportive services

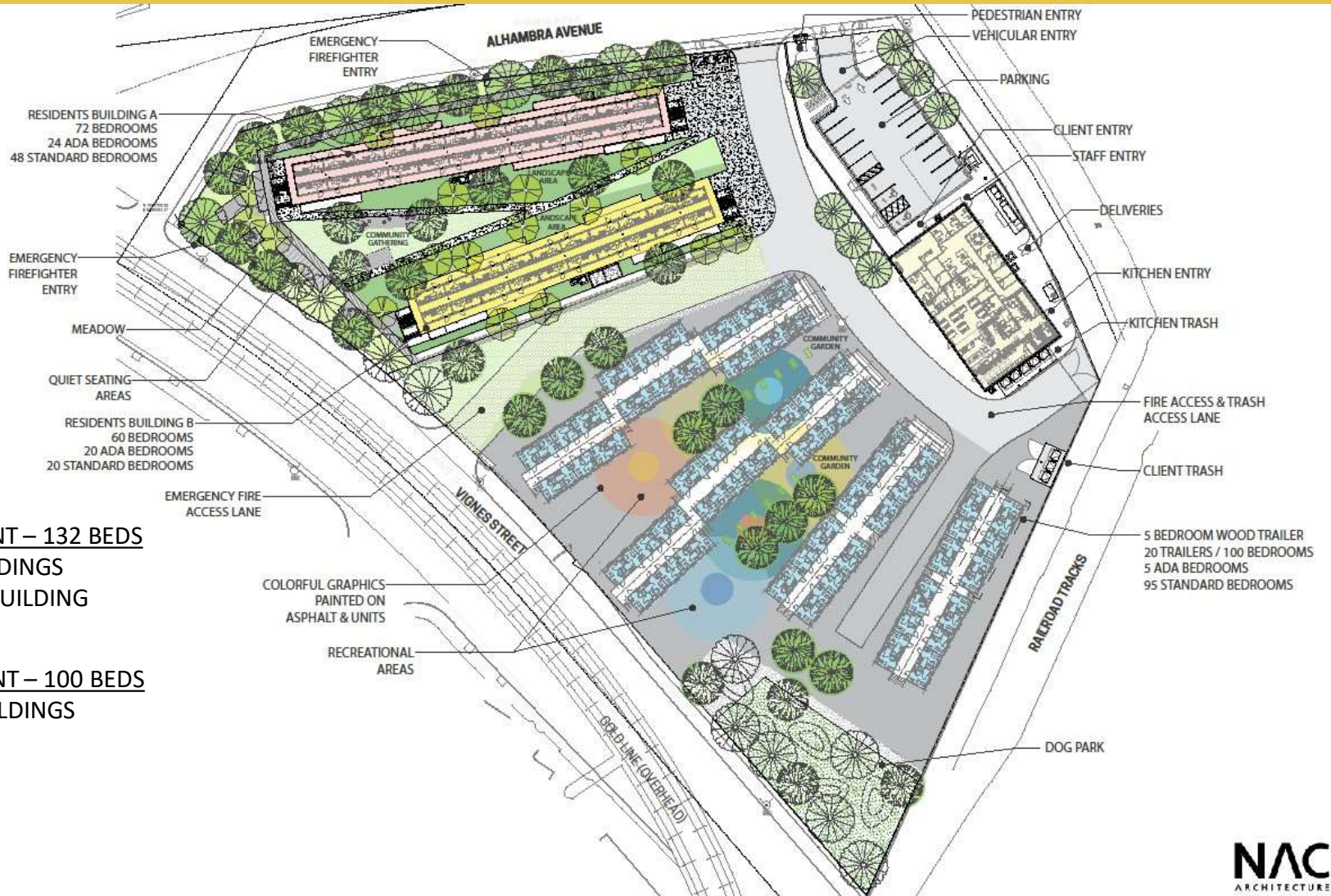
Location of the Vignes Project



Site Aerial View



Conceptual Site Design & Layout



Conceptual Site Design



Residential Buildings - Courtyards



Residential Building – Exterior Walkway



Administration Building – Dining Area



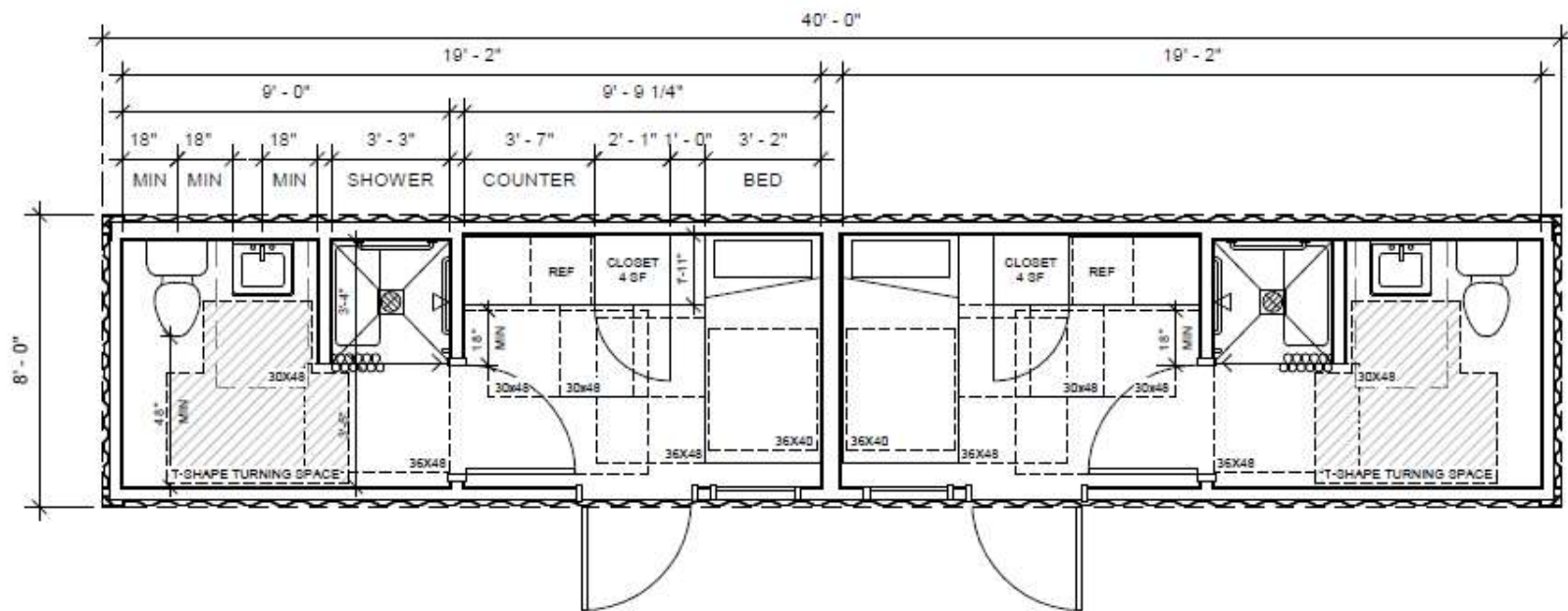
Typical Bedroom Unit Layout – Site 1



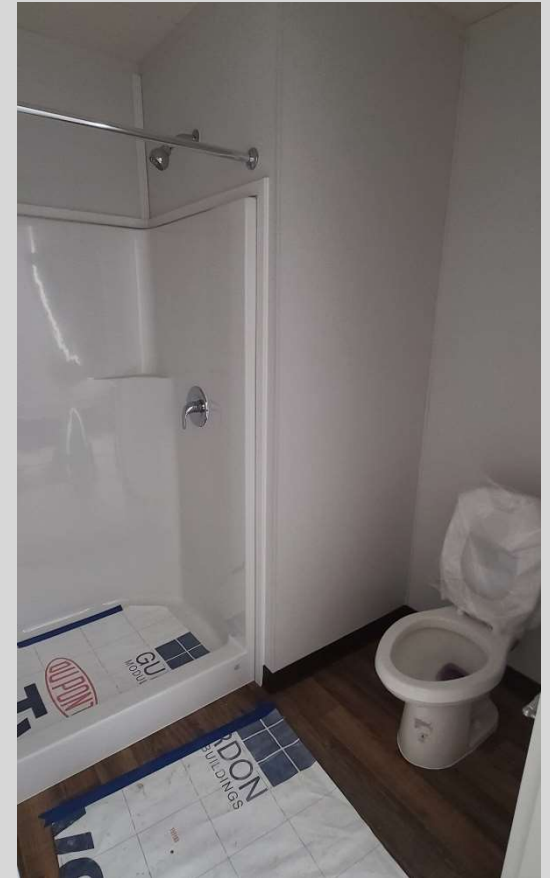
Typical Bedroom Unit Layout – Site 1



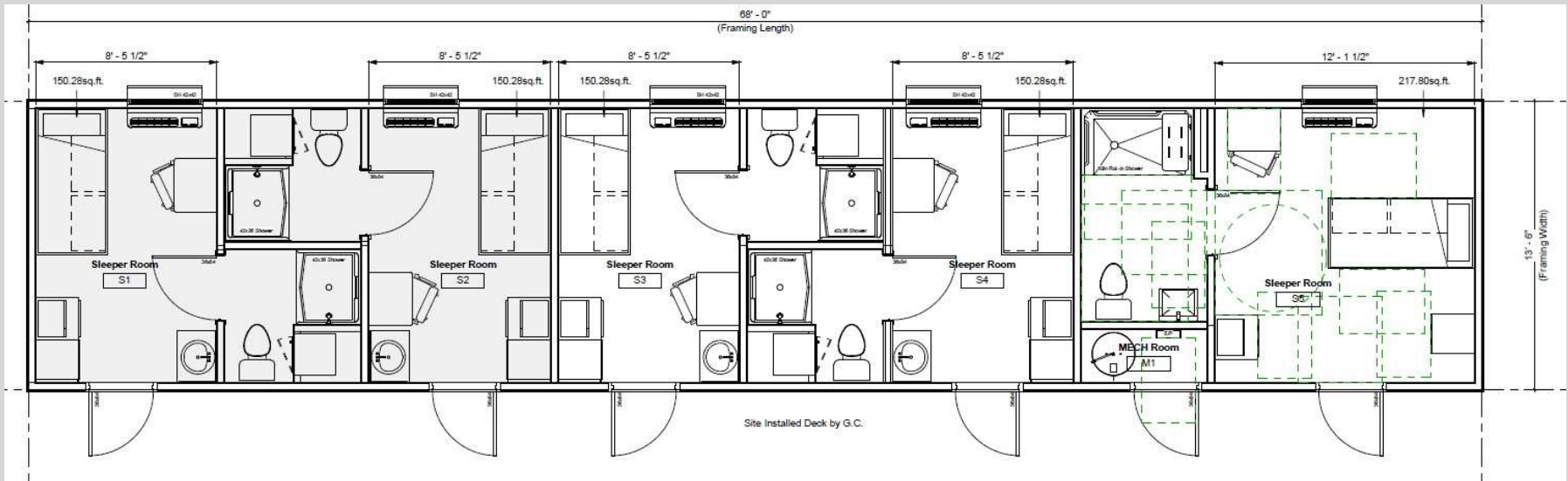
Typical Bedroom Unit Layout – Site 1



Typical Bedroom Unit Layout – Site 2



Typical Bedroom Unit Layout – Site 2



Project Timetable

Work to be completed in February 2021

- Complete kitchen installation
- Punch-list items for housing and kitchen/administration building

Work continuing into March 2021

- Hardscape and landscaping
- Fencing

Substantial completion expected on February 28, 2021

Ongoing offsite development

- Obtain permit from City of Los Angeles to use North Alhambra for dedicated facility parking

Operations

Service Providers

- The People Concern
- Weingart Center

Services to start in April 2021

Target Population

- People experiencing homelessness (PEH) within the City of L.A., with priority in CD 14; includes PEH within 500' of freeway overpasses, underpasses, and/or ramps, PEH aged 65 years or older, and other vulnerable PEH.

Funding of Operations

- City of LA will fund \$55/bed/night for 232 units until 6/30/25; County will cover costs above \$55/bed/night.

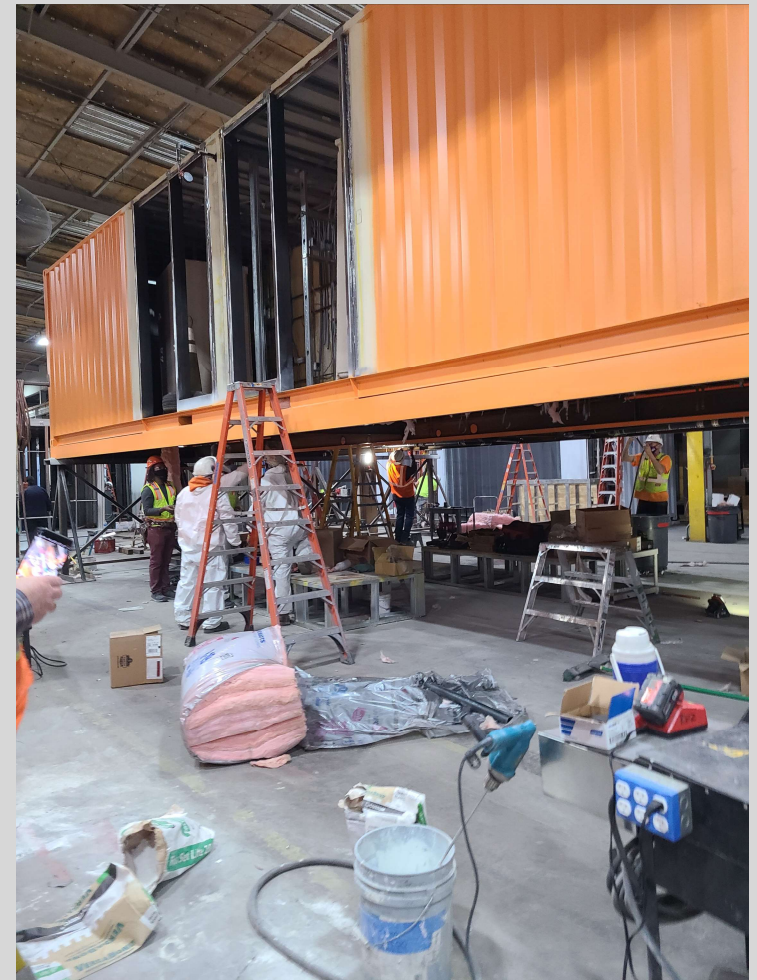
Construction Photos



Site Preparation and
Underground Utilities



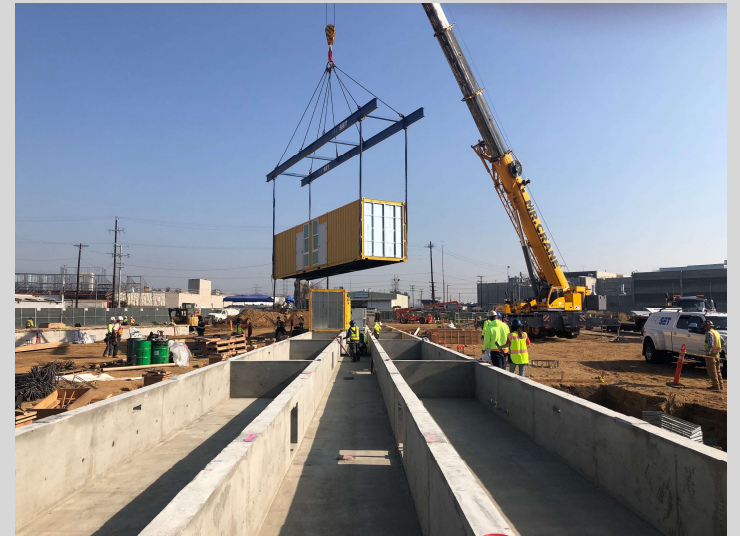
Construction Photos



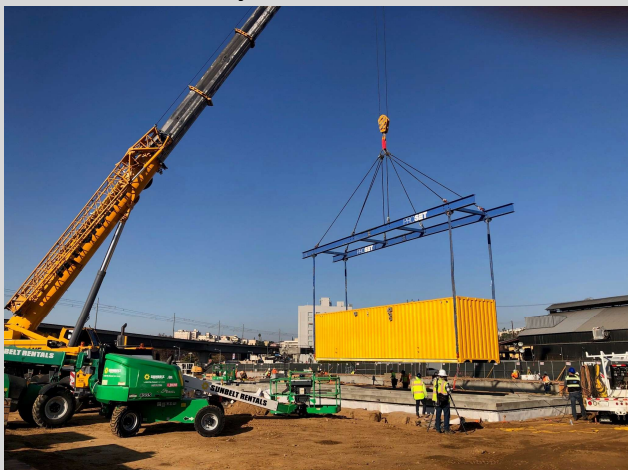
Repurposing shipping containers to homes at the Crate Modular Factory in Carson, Calif.



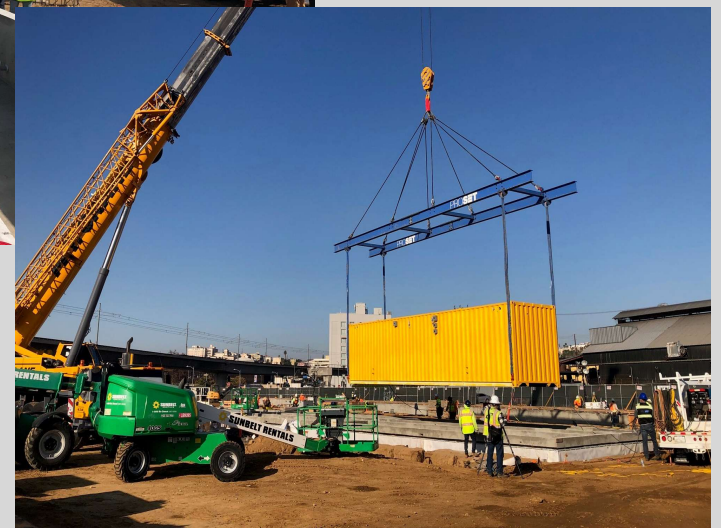
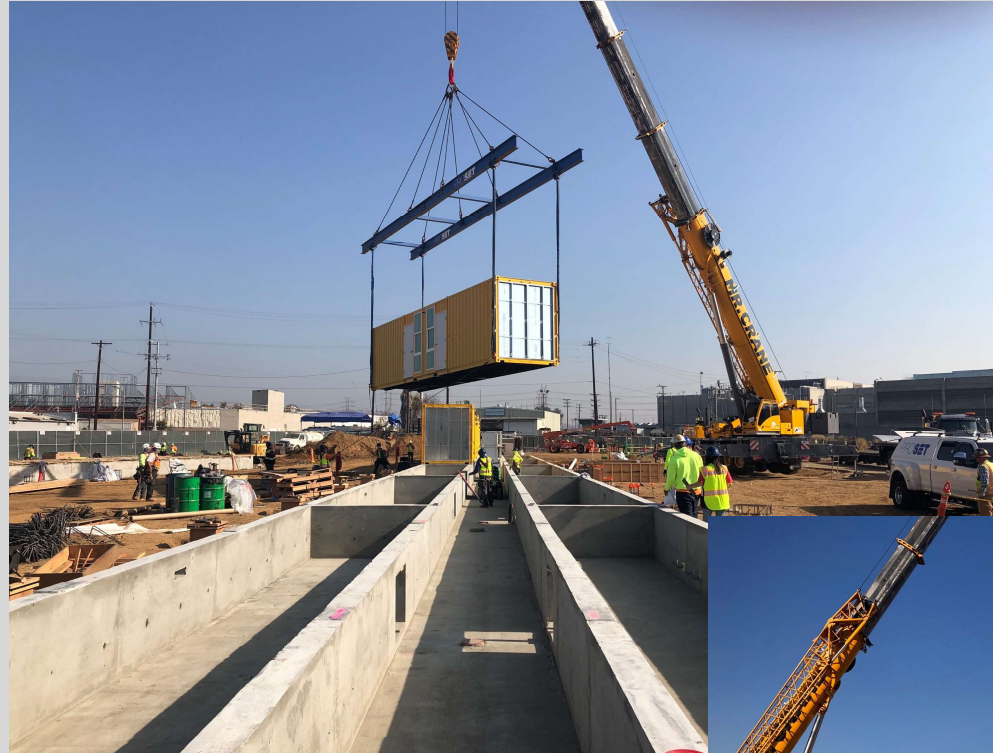
Construction Photos



From factory to home.



Construction Photos



Construction Photos



As fast as a speeding train

Construction Photos



Construction Photos



Construction Photos



Construction Photos



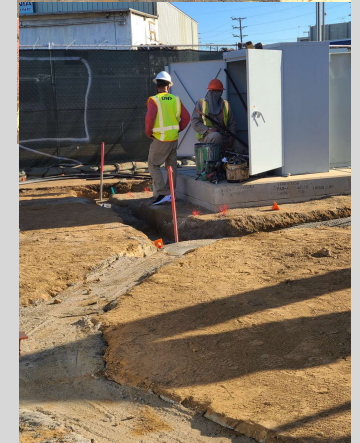
Construction Photos



Construction Photos



Construction Photos



Hard work to make Los Angeles a better place

Vignes Street Housing

QUESTIONS?

Questions?

¿Preguntas?

Campus Projects Update

Actualización del proyectos de campus

Alicia Ramos, Los Angeles County Public Works

Iris Regn, Los Angeles County Department of Arts and Culture



Public Works

LOS ANGELES COUNTY

LAC+USC MEDICAL CAMPUS Projects Update

Health Innovation Community Partnership (HICP) Meeting
February 5, 2021

LAC+USC MEDICAL CAMPUS PROJECTS UPDATE



Restorative Care Village

LAC+USC MEDICAL CAMPUS PROJECTS UPDATE



LAC+USC MEDICAL CAMPUS PROJECTS UPDATE

Women's and Children's Hospital Demolition

(1240 North Mission Road – Corner of Zonal and Mission)



LAC+USC MEDICAL CAMPUS PROJECTS UPDATE



LAC+USC MEDICAL CAMPUS PROJECTS UPDATE



LAC+USC MEDICAL CAMPUS PROJECTS UPDATE



Plaque Removal

LAC+USC MEDICAL CAMPUS PROJECTS UPDATE



**Time Capsule
Behind the Plaque**

LAC+USC MEDICAL CAMPUS PROJECTS UPDATE

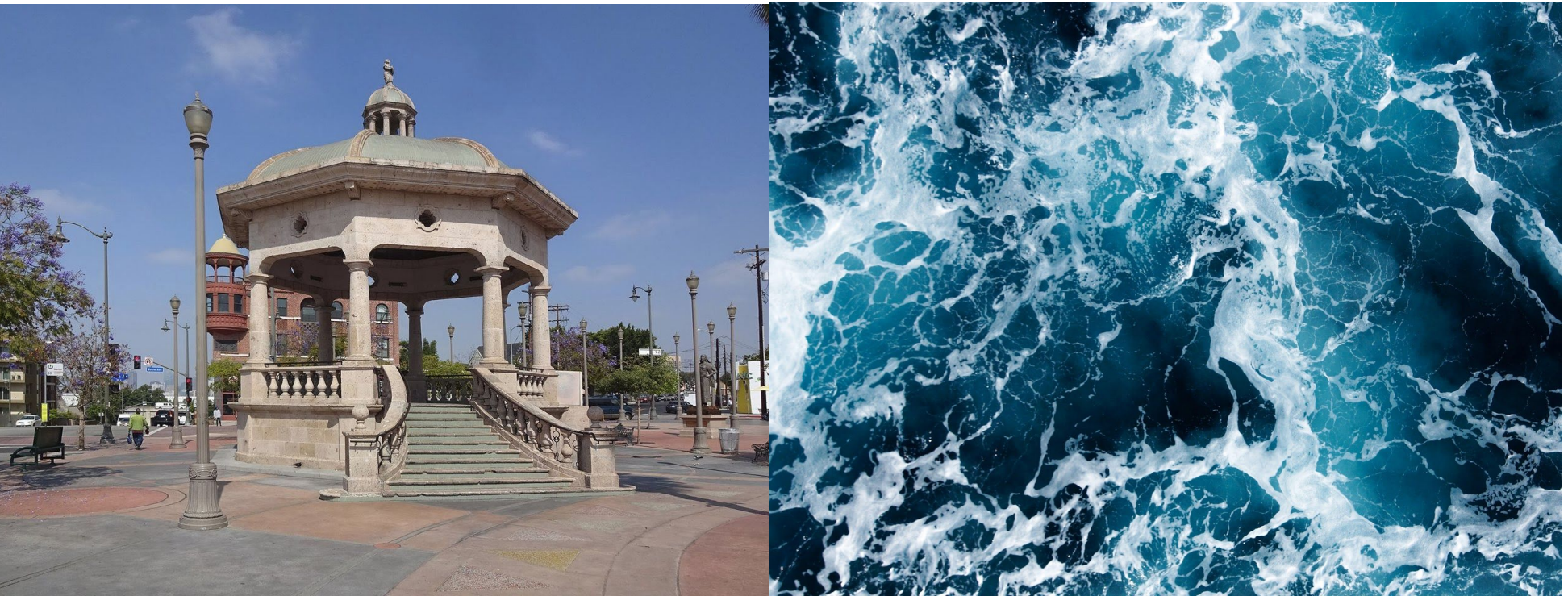


- **Time capsule and plaque will remain with the Medical Center until it is reset in a future project**




LAC + USC Child Care Center

—Andrew hem



I wanted to incorporate some sort of landmark from Boyle Heights. After exploring the area for a full day I thought this architecture from Mariachi Plaza fit the vision I was looking for. Water can move you in any direction without trying. You have to put in effort just to stay still. If you don't put in effort the ripple will just move to new directions instantly.





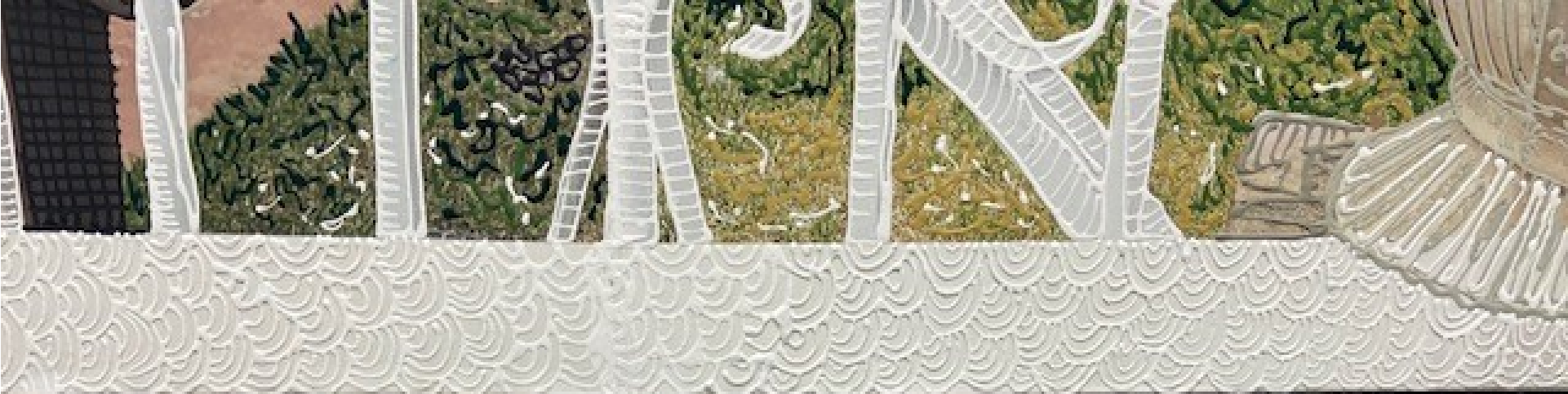
When I think of energy and trust, the first thing that comes to mind is jump rope. Playing solo jump rope is a great way to get exercise but when you jump with multiple people it becomes playful and filled with energy. Group jump rope is one of the only games where there is no rivalry or competitiveness that comes along with it. There's no opponents to complete against. It becomes similar to dancing and you're relying on your partner to keep up with the beat. Everyone jumping is relying on each other to keep up with the rhythm. It's somewhat of an unspoken trust. This image is set in a fantastical environment. There's two famous landmark architecture from mariachi plaza that I elongated to give it more of a surreal imagery. I want the viewers to feel like Boyle Heights is based from a fairy tale. I wanted to portray the same feeling that i felt when i was a kid seeing the mural in my neighborhood. I'm not going to the extreme by showcasing blue faces like in Guam but rather a more realistic tone that is pushed. I wanted to really push the pinks and red to really welcome the viewers in.





LAC+USC RCV: Jaime Scholnick Final Design







Montana v2 - TADI Tile Mural Mock Up 2020 06 18 - 12x12-inch tiles, 0.125-inch grout, 430.308 inches by 286.872 inches (36 tiles wide by 24 tiles high)



Next Meeting:
Friday, March 5, 2021

Próxima reunión: viernes
5 de marzo de 2021

www.hicpla.org

HHEALTH
IINNOVATION
CCOMMUNITY
PPARTNERSHIP