

HHEALTH
IINNOVATION
CCOMMUNITY
PPARTNERSHIP

Welcome!

For the best meeting experience, please:

- Mute your microphone unless speaking
- Enable your camera
- Click on the interpretation button to select your language of choice
- Please note – this meeting is being recorded

¡Bienvenidos!

Para la mejor experiencia de reunión, por favor:

- Silencia tu micrófono a menos que estés hablando
- Habilita tu cámara
- Haga clic en el botón de interpretación para seleccionar el idioma de su elección
- Tenga en cuenta - esta reunión se está grabando

HEALTH INNOVATION COMMUNITY PARTNERSHIP

Monthly Meeting
July 8, 2022

Reunión mensual
8 de julio de 2022



Tech Tips for Zoom Meetings

Consejos técnicos para reuniones de Zoom

- This meeting is being recorded and will be posted to the hicpla.org website
 - All attendees – please mute yourself unless you are speaking!
 - Turn your audio and video on or off by clicking the microphone or camera.
 - Click the “Raise Hand” button if you want to ask a question
 - Type questions in the Chat
 - Interpretation allows you to attend in your language of choice.
- Esta reunión se está grabando y se publicará en el sitio web hicpla.org
 - Todos los asistentes, silenciense a menos que estén hablando.
 - Encienda o apague su audio y video haciendo clic en el micrófono o la cámara.
 - Haga clic en el botón "Levantar la mano" si desea hacer una pregunta.
 - Escribe preguntas en el Chat
 - La interpretación le permite asistir en el idioma de su elección.



Mute



Stop Video



Invite



Participants



Share



Chat



Record



Interpretation



More

End Meeting

3

Agenda

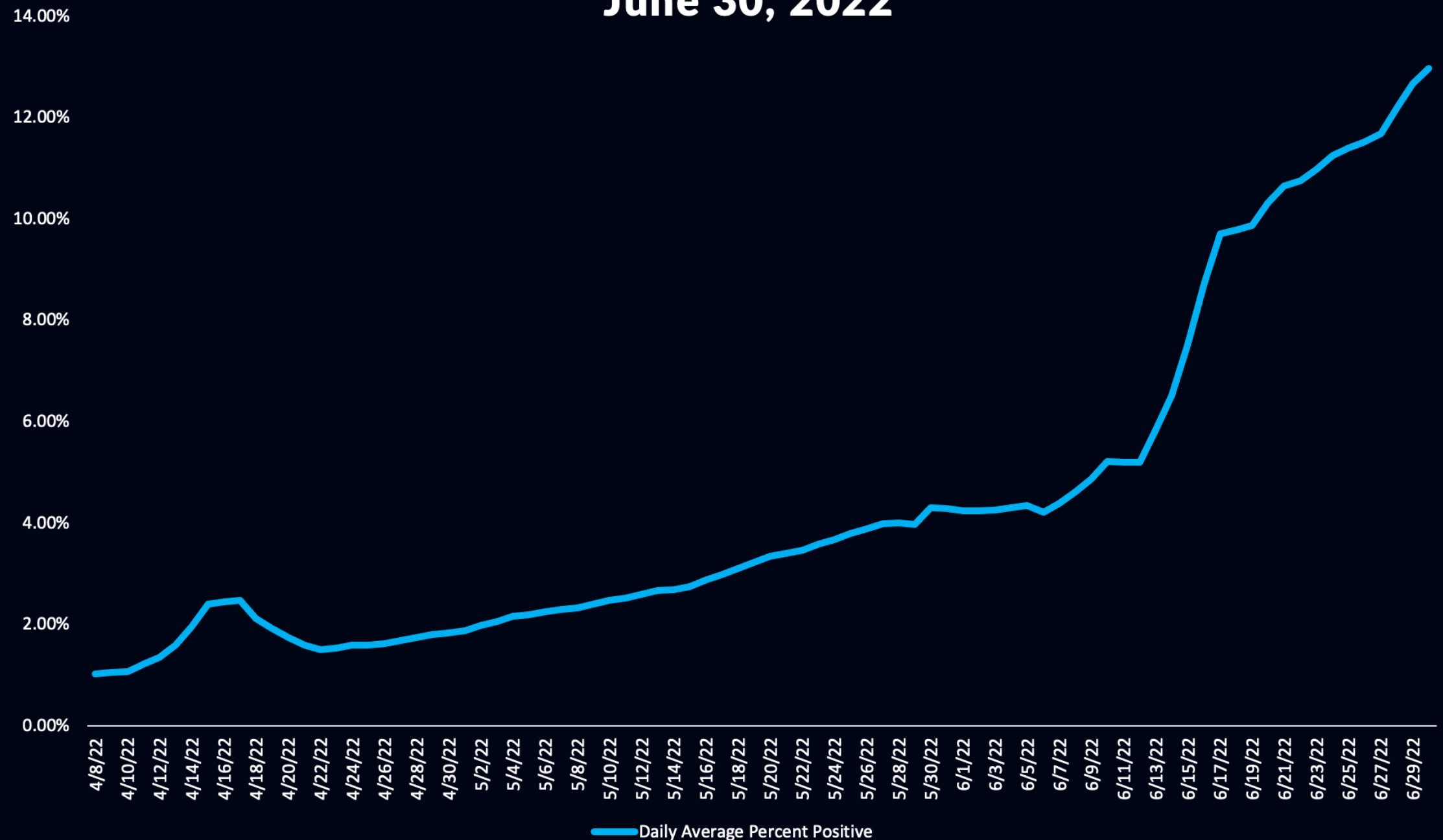
8:45	Meeting Overview, Guiding Principles and Announcement	Resumen de la reunión, principios rectores y anuncio
8:50	LAC+USC Medical Center Update	Actualización del Centro Médico LAC + USC
9:00	Civic Arts Conversations: Jaime Scholnick	Conversaciones de artes cívicas: Jaime Scholnick
9:20	Campus Projects Update	Actualización de proyectos del campus
9:50	SD1 & Metro Update	Actualización de primer distrito y transporte
10:30	Partner Announcements	Celebración y conmemoración de BHC

COVID-19 Update

New Cases Reported
June 2, 2022 - 5,047
July 7, 2022 - 5,316

Positivity Rate 7-Day
Daily Average: 12.69%
(compared with 3.88%
one month ago)

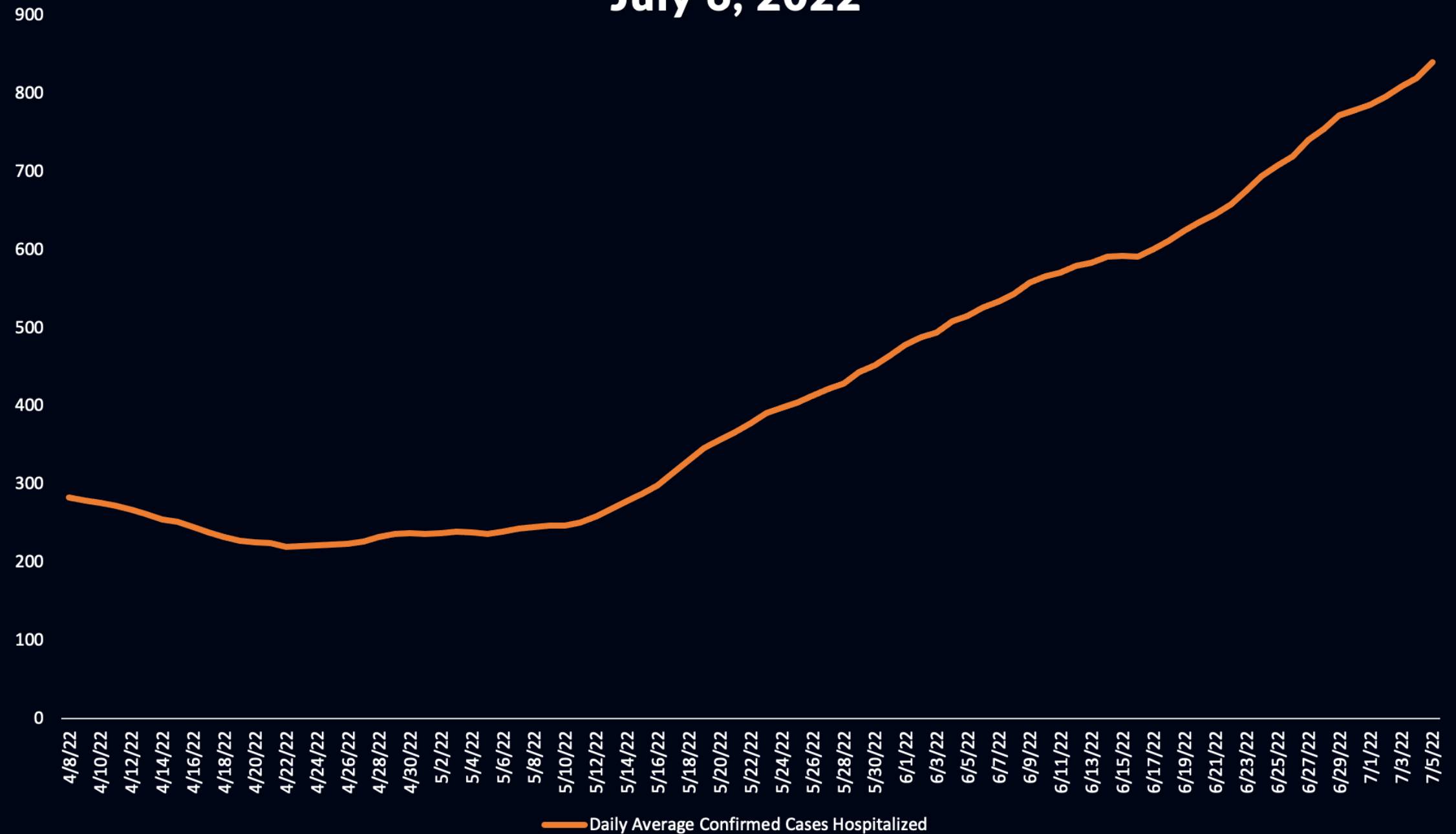
Daily Reported Percent of COVID-19 Diagnostic Tests that are Positive, Past 7-day Average June 30, 2022



COVID-19 Update

989 people hospitalized with COVID-19

Daily Number of Hospitalized COVID-19 Confirmed Patients, Past 7-day Average July 6, 2022



HICP Guiding Principles

(from our Vision
and Mission
document)

1. All participants agree to basic principles prioritizing equity, community resilience, and health in all programs and projects.
2. All participants agree to approach issues with an open mind, be willing to engage in dialogue, and commit to thinking boldly about solutions.
3. Participants will state views and ask genuine questions.
4. Participants will seek to avoid monologues and arguments; move to conversations where participants are curious and seek to understand various points of view.
5. Participants will explain reasoning and intent; share how we reach our conclusions so that others can understand our divergent reasoning.
6. Participants will attack the problem and not the person, organization, or institution.
7. Participants will define key terms so that we can attain a shared understanding.
8. Participants will share all relevant information.
9. Participants will always arrive prepared for the meeting.
10. During meetings, only one person speaks at a time; we will not engage in sidebar conversations.
11. Participants will work to develop a comprehensive, common set of information with which to solve problems and make decisions.
12. Participants will jointly design next steps.

LAC+USC

LAC+USC Medical Center
Update

**Actualizaciones del Centro Medico de
LAC+ USC**

Jorge Orozco, Chief Executive Officer



LAC+USC
MEDICAL CENTER

LAC+USC Medical Center Updates

Health Innovation Community Partnership (HICP) Meeting
July 8, 2022



“Sobrevivir” Virtual Unveiling

Followed by: Women’s Health & Resource Fair

- On August 7, 2018, Los Angeles County apologized to more than 200 women who experienced coerced sterilization at LAC+USC Medical Center. In their apology, Los Angeles County instructed the Department of Health Services and the Department of Arts and Culture to design and install a civic artwork on the campus of LAC+USC Medical Center to express their sincere apologies to the women and families that were harmed by the County’s coercive sterilization practices.
- Los Angeles-based artist Phung Huynh was commissioned to create “Sobrevivir” through the Los Angeles County Civic Art Policy and a community-engagement process

Date: Monday, July 11th, 2022

Time: 1:00 pm – 2:00 pm Ceremony
2:00 pm – 3:00 pm Reception and Women's Health Fair

In Person-Location: The Historic General Hospital

Virtual Link: <https://youtu.be/J6nqzle7tfo>



Los Angeles County Arts & Culture | LAC+USC MEDICAL CENTER | The Wellness Center AT THE HISTORIC GENERAL HOSPITAL | Los Angeles County Supervisor HILDA L. SOLIS First District

LAC+USC Medical Center and The Wellness Center in collaboration with Los Angeles County Supervisor Hilda L. Solis

INVITE YOU TO THE UNVEILING OF NEW CIVIC ART WORK

“SOBREVIVIR”
BY ARTIST PHUNG HUYNH

JULY 11, 2022 | 1:00PM - 3:00PM

RECEPTION AND RESOURCE FAIR TO FOLLOW

THE WELLNESS CENTER AT THE HISTORIC GENERAL HOSPITAL
1200 N. STATE ST, LOS ANGELES, CA 90033

On August 7, 2018, Los Angeles County apologized to more than 200 women who experienced coerced sterilization at LAC+USC Medical Center. In their apology, Los Angeles County instructed the Department of Health Services and the Department of Arts and Culture to design and install a civic artwork on the campus of LAC+USC Medical Center to express their sincere apologies to the women and families that were harmed by the County’s coercive sterilization practices. Los Angeles-based artist Phung Huynh was commissioned to create “Sobrevivir” through the Los Angeles County Civic Art Policy and a community-engagement process.

TO RSVP AND TO WATCH LIVE SCAN QR CODE

@WeAreLAHealth | @LAHealthEnEspañol

Coerced Sterilization

- Virtual panel discussion on the history and legacy of the coerced sterilizations of over 200 women who underwent sterilizations at LAC+USC Medical Center
- Panelists provided first hand testimony of their fight for justice for the survivors through *Madrigal v. Quilligan*, and the aftermath of the events still relevant today.
- Replay available: https://youtu.be/FnUD_vQjs4I



**COERCED
STERILIZATION**
at
**LAC+USC
MEDICAL CENTER**

MODERATOR
Lalena Vellanoweth

PANELIST
Jorge Orozco
Antonia Hernandez
Dr. Bernard Rosenfeld
Virginia Espino

DISCUSSION PANEL
Who:
SD1, LAC+USC Medical Center,
Department of Arts and Culture

What:
LAC+USC will host a virtual panel discussion
on the Coerced Sterilization at LAC+USC Medical Center

When | Time:
July 7, 2022 | 10:30am

Where:
Virtual link will be shared with staff, community and media.

Virtual LAC+USC Restorative Care Village – Phase 1 Grand Opening Ceremony

- July 6th Virtual Grand Opening
- Virtual Tour:
<https://vimeo.com/715654025/fbff3756e3>

Please Join the Virtual LAC+USC Restorative Care Village – Phase 1 Grand Opening Ceremony



**Wednesday, July 6, 2022
9:00 a.m.**

Join Virtually!
Click [Here](#) or Visit the Link:
<https://vimeo.com/event/2245217/d7e8757819>





Health &
Wellness

Salud y
bienestar

Civic Arts Conversations with Jaime
Scholnick

**Conversaciones de artes cívicas con
Jaime Scholnick**

*Iris Regn, LA County Department of Arts and Culture and
Jaime Scholnick*

Health &
Wellness

Salud y
bienestar

Campus Projects Update

Actualización de proyectos del campus

Alicia Ramos, LA County Department of Public Works



Public Works
LOS ANGELES COUNTY

LAC+USC MEDICAL CAMPUS Construction Projects Update

HICP Meeting
July 8, 2022

Courtyard Renovation & Elevator Addition Project



- **New elevator at courtyard stair, connecting Outpatient Building Level to Hospital Level**
- **2 New elevator cabs**

Courtyard Renovation & Elevator Addition Project



- **Steel framing underway**
- **Elevator cab equipment on site**
- **Completion in September 2022**

Courtyard Renovation & Elevator Addition Project



Women's and Children's Hospital Demolition Project

- Demolition of WCH building complete
- Backfill activities complete in August 2022
- Initial demolition at Griffin Avenue and Mission Road, complete
- Demolition of existing Child Care Center Fall 2022



Women's and Children's Hospital Demolition Project



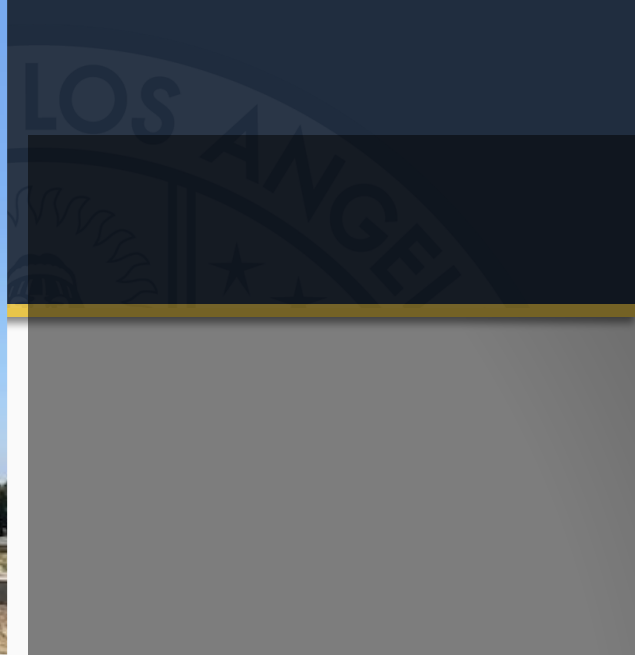
Child Care Center Project

- **Building and site utilities complete, foundations and building pad complete; Now working on vertical construction and framing**
- **Completion September 2022**





Child Care Center
Project



Restorative Care Village Projects



- Complete
- Ribbon Cutting
July 2022

Restorative Care Village Projects



Restorative Care Village Projects





Restorative Care Village
Projects

LAC+USC

General Hospital and West Campus Project Update

Actualización del proyecto del hospital general y west campus

Heather Hays, LAC+USC Medical Center Foundation, Inc.

After three years of community engagement and technical analysis, the Final Feasibility Study is available!!

Visit our Website to read or download the Study:
[hicpla.org/general-hospital-feasibility-study](https://www.hicpla.org/general-hospital-feasibility-study)



LAC+USC Medical Center General Hospital & West Campus Feasibility Study

"When I look at this iconic structure, I see much more than an architectural gem: I envision a thriving community facility proactively helping people suffering from homelessness and other disadvantages get back on their feet."

– Supervisor Hilda L. Solis, First District, Los Angeles County

Después de tres años de participación comunitaria y análisis técnico, ¡el reporte Final del Estudio de Factibilidad está disponible!

Visite nuestro Sitio Web para leer o descargar el Estudio:
<https://www.hicpla.org/es/general-hospital-feasibility-study>



LAC+USC Medical Center Hospital General y Campus Oeste Estudio de factibilidad

"Cuando observo esta estructura icónica, veo mucho más que una joya arquitectónica: imagino una instalación comunitaria próspera que ayude de manera proactiva a las personas que no tienen hogar y otras desventajas a recuperarse".

– Supervisora Hilda L. Solis, Primer Distrito, Condado de Los Ángeles

After three years of community engagement and technical analysis, the Final Feasibility Study is available!!

The LAC+USC Medical Center General Hospital and West Campus Feasibility Study report was submitted to the Board of Supervisors on April 29, 2022.

Click here to download your copy:

CEO Cover Letter

Study in English

Estudio en Español

Después de tres años de participación comunitaria y análisis técnico, ¡el reporte Final del Estudio de Factibilidad está en vivo!

El reporte del Estudio de Factibilidad del LAC+USC Medical Center Hospital General y Campus Oeste fue presentado a la Junta de Supervisores el día de 29 de abril de 2022.

Haga click aquí para descargar su copia:

CEO Cover Letter

Estudio en Inglés

Estudio en Español

Final Community at Large Meeting #5

HICP	General Hospital Feasibility Study	Restorative Care Village	Women's & Children's Hospital	Child Care Center	EDIA Initiative Resources
------	------------------------------------	--------------------------	-------------------------------	-------------------	---------------------------

- **Thursday, June 2nd, 2022,
5:00 PM - 7:00 PM**
- **Via Zoom and In-person
Livestream at LAC+USC**
- **131 attendees via Zoom | 10
attendees in person**
- **Meeting materials are available on
the project website**
- **Feasibility Study has concluded!**

Resource Library

Digital Documents

[11.13.18 General Hospital Feasibility Study Board Motion](#)

[Affordable Housing Fact Sheet in English](#)

[Hoja Informativa sobre Vivienda Asequible en Español](#)

[Frequently Asked Questions about the Study in English](#)

[Preguntas Frecuentes sobre el Estudio in Español](#)

Community Meetings

Community Meeting 5 (Virtual)

June 2, 2022, 5:00PM - 7:00PM | Via Zoom

Flyers:

[English](#) | [Spanish](#)

The final Community At-Large Meeting for the General Hospital and West Campus Feasibility Study to present the Study to the public will be held on Thursday, June 2nd from 5:00 - 7:00 PM via Zoom.

All are welcome -
Spanish interpretation will be provided!

Community Meeting 4 (Virtual)

February 17, 2022 | Via Zoom

Flyers and Handouts:

[2/17 Meeting Announcement](#)
[Meeting Questions and Answers in English](#)
[Reunión de Preguntas y Respuestas en Español](#)

Presentation:

[English & Spanish](#)

Videos:

[Meeting Video in English](#)
[Video de la Reunión en Español](#)
[Opening Remarks from Supervisor Hilda L. Solis](#)

Request for Proposal (RFP) Timeline

Cronograma de Solicitud de Propuestas (RFP, por sus siglas en inglés)



Community Participation in RFP Process

How will community input be included to shape the RFP and future phases?

- We are exploring roles for the Health Innovation Community Partnership (HICP) to participate in the request for proposals (RFP) process as well as future phases

What are the proposed roles for community guidance in the RFP Process?

- Creation of a subcommittee to help review developers' proposed Community Outreach and Community Benefits Plans

How can the public stay connected to the RFP Process?

- Join us at monthly HICP meetings to receive regular updates

Participación Comunitaria en el Proceso del RFP

¿Cómo se incluirán los aportes de la comunidad para dar forma al RFP y las fases futuras?

- *Estamos explorando roles para que el Health Innovation Community Partnership (HICP) participe en el proceso de solicitud de propuestas (RFP, por sus siglas en inglés), así como en las fases futuras.*

¿Cuáles son los roles propuestos para la orientación comunitaria en el proceso de RFP?

- *Creación de un subcomité para ayudar a revisar los Planes de Divulgación Comunitaria y Beneficios Comunitarios propuestos por los desarrolladores*

¿Cómo puede el público mantenerse conectado con el proceso RFP?

- *Únase a nosotros en las reuniones mensuales de HICP para recibir actualizaciones periódicas*

Thank You!

For more information, please contact

Heather Hays

Heather@TheWellnessCenterLA.org

or Sophia Wang

SWang@wdacs.lacounty.gov

Community
Stability

Estabilidad
Comunitaria

Updates from First District (SD1) and
Metro

Actualización de primer distrito y transporte

*Guadalupe Duran-Medina, Office of Supervisor Hilda L.
Solis*

*Dan Mahgerefteh, Mengzhao Hu and Jeanet Owens, LA
Metro*

Staffing Changes!

- Welcome Louisa Ollague to the Office of Supervisor Hilda L. Solis

Funding Announcement



LAC + USC Medical Center New Metrolink Station Feasibility Study

Stakeholder Presentation



Agenda

LAC + USC Medical Center New Metrolink Station Feasibility Study

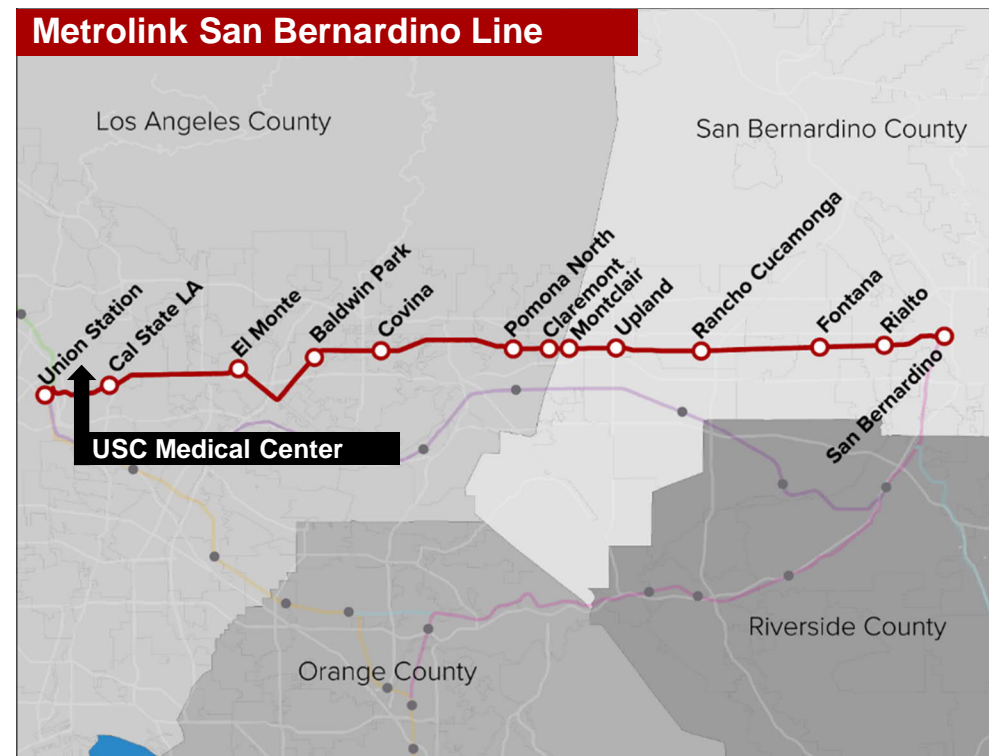
- 1. Study Overview**
- 2. Purpose and Need**
- 3. Parallel Improvement Efforts**
- 4. Station Feasibility**
- 5. Project Funding and Next Steps**

1. Study Overview

LA Metro has commissioned a feasibility study to **evaluate a potential new Metrolink station** along the San Bernardino Line (SBL) at the LAC-USC Medical Center

The feasibility study has:

- Studied project site constraints
- Analyzed Metrolink operations
- Defined purpose and need
- Provided a cost estimate
- Conducted a benefit-cost analysis
- Developed a funding strategy
- Forecasted potential ridership
- Evaluated first/last mile connectivity opportunities



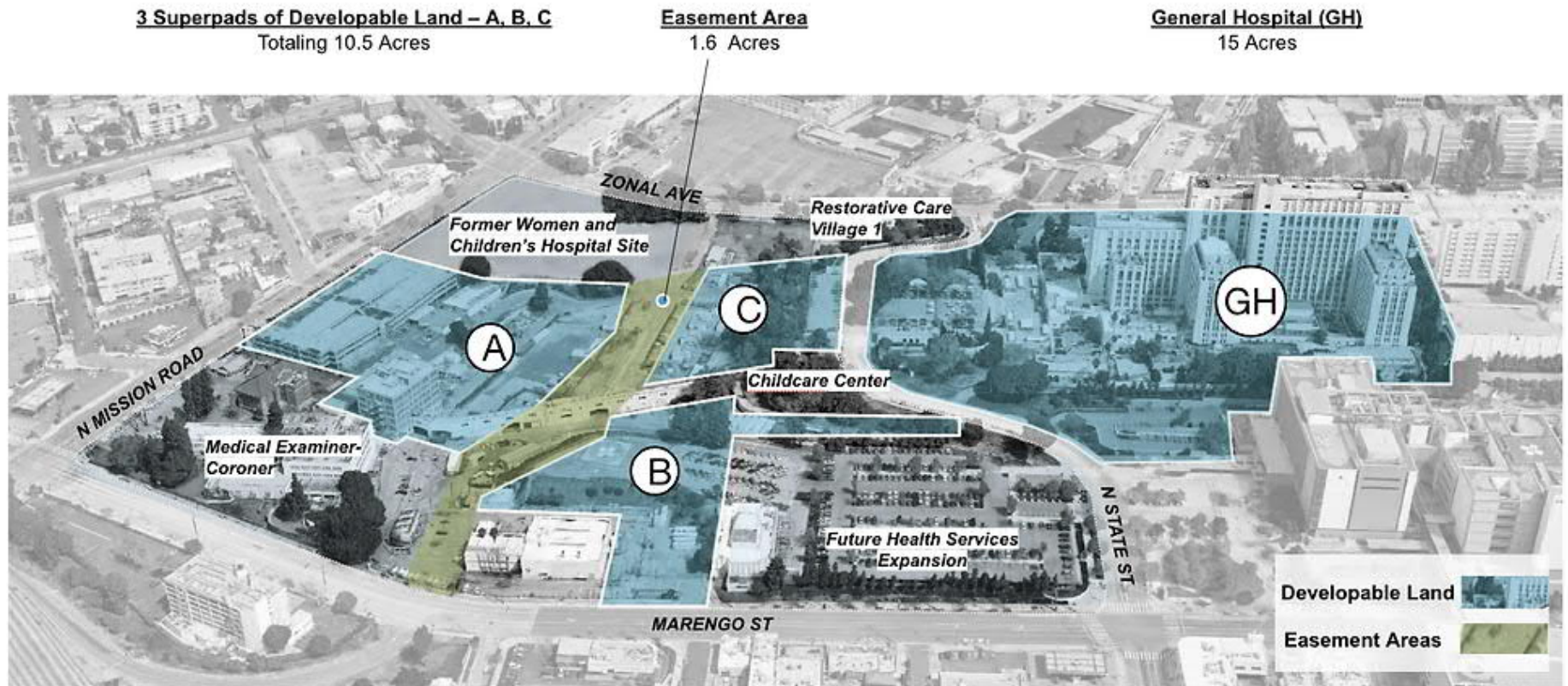
2. Purpose & Need

- Provide a reliable transit service option for the 9,000 essential workers and 600 daily visitors of LAC+USC Medical Center;
- Improve the mobility of the residents in the surrounding neighborhood, which is a Metro equity focus community;
- Support the various efforts to redevelop the medical center area to a thriving health innovation district that provides world-class integrated health delivery, while at the same time promoting health equity, wellness, and economic well-being in the surrounding neighborhoods; and
- Mitigate the high parking demand and traffic at the USC Health Sciences Campus



3. Parallel Improvement Efforts

Health Innovation Community Partnership (HICP)'s Vision



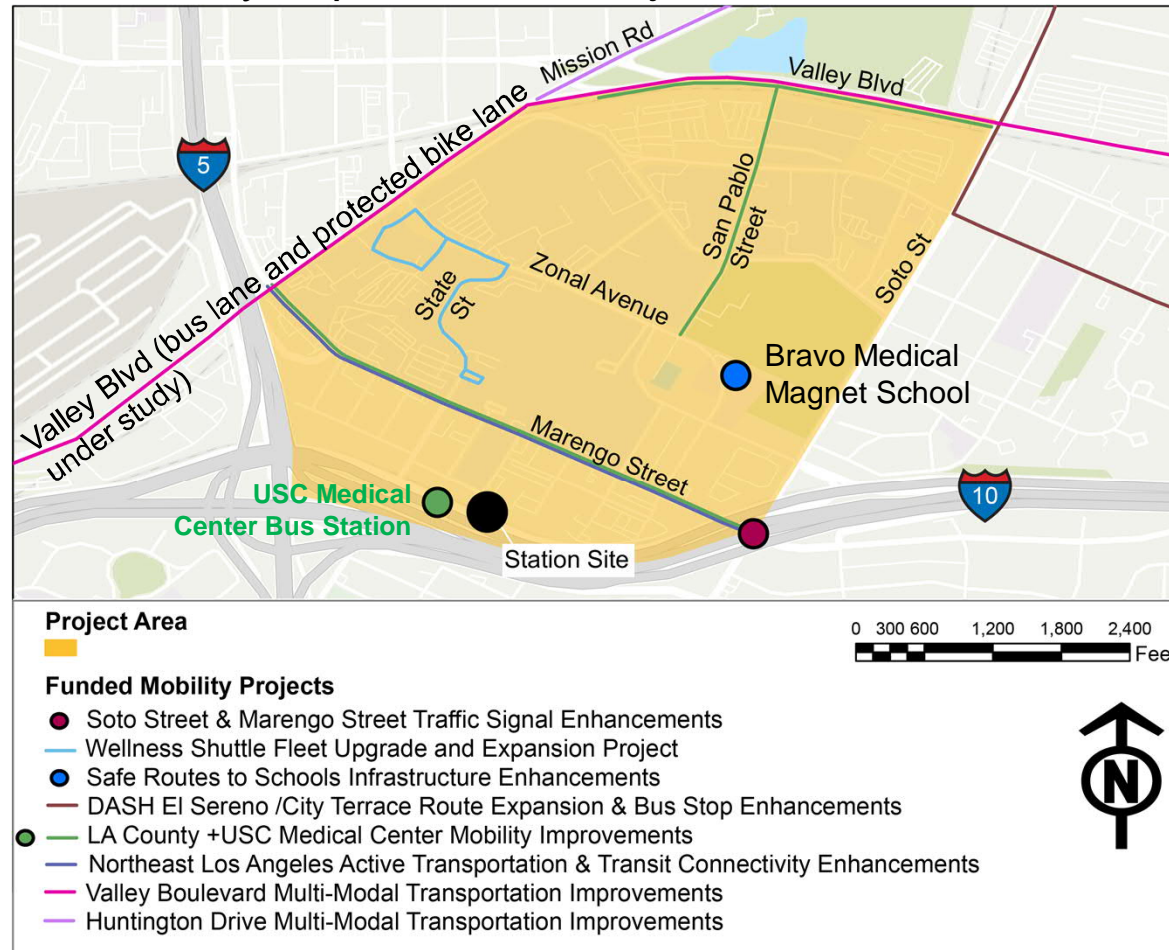
3. Parallel Improvement Efforts

General Hospital and West Campus Feasibility Study

- Re-use Feasibility Study for potential housing and mixed-use facility.
- Address the County's tremendous need for homeless, low income, and high-need population residential options.
- Plan includes affordable housing, community serving-spaces (both in-door facilities and outdoor open and green spaces), office space, restaurant, retails, hospitality.
- Study was completed recently.
- Impacts on the new Metrolink Station:
 - ✓ Potentially more riders to serve
 - ✓ First/Last mile accessibility improvements

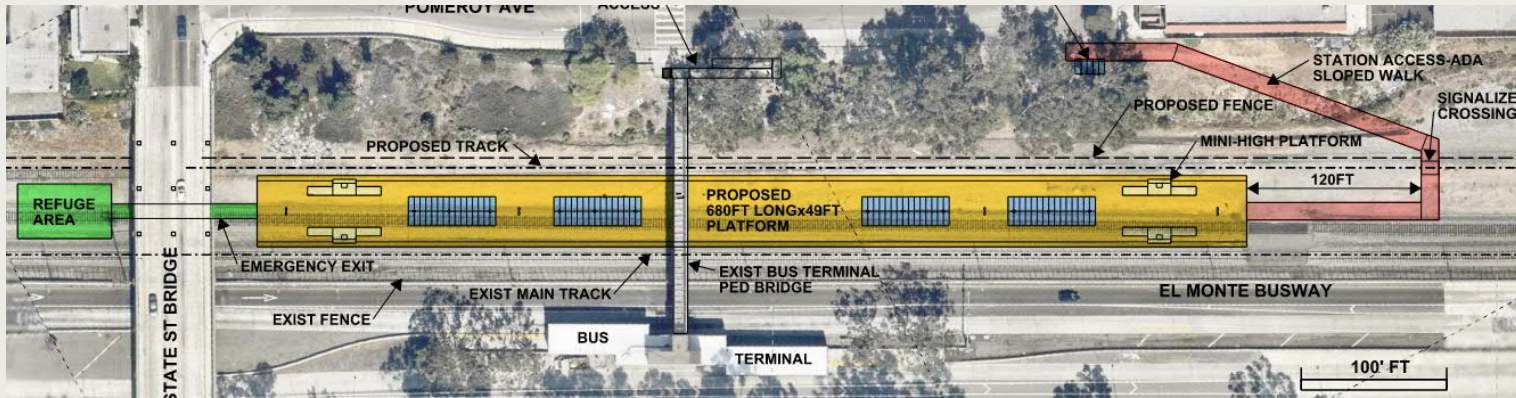
3. Parallel Improvement Efforts

SR-710 North Corridor Mobility Improvement Projects

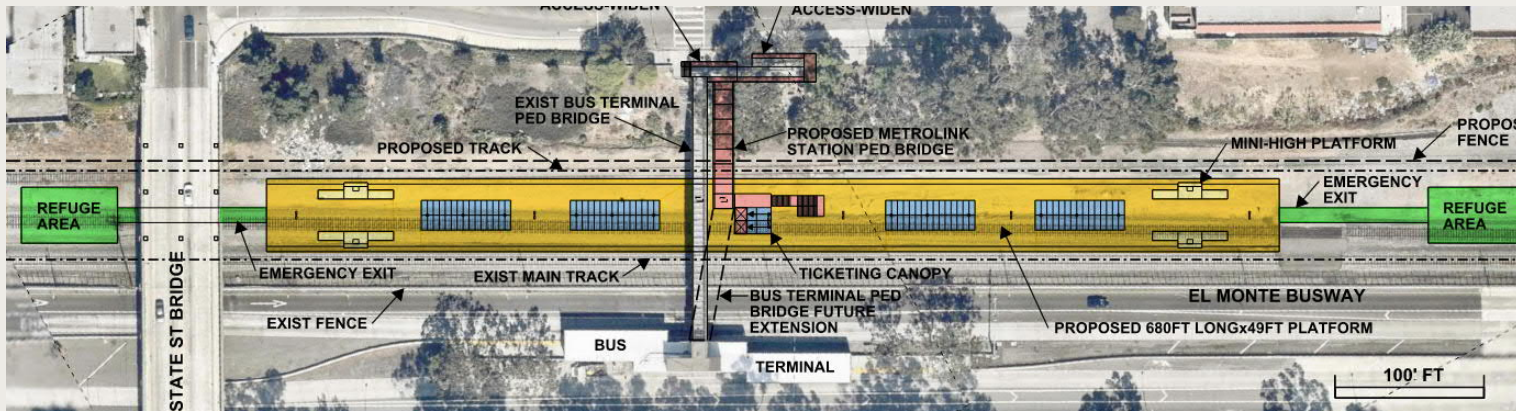


4. Station Feasibility

Three Concepts Developed (Standard, Improved Ped. Connection & Signature)



Standard



Improved
Pedestrian
Connection

Station Rendering

Standard Pedestrian Connection (conceptual design)



Station Rendering

Signature – Caterpillar Option Platform View (conceptual design)



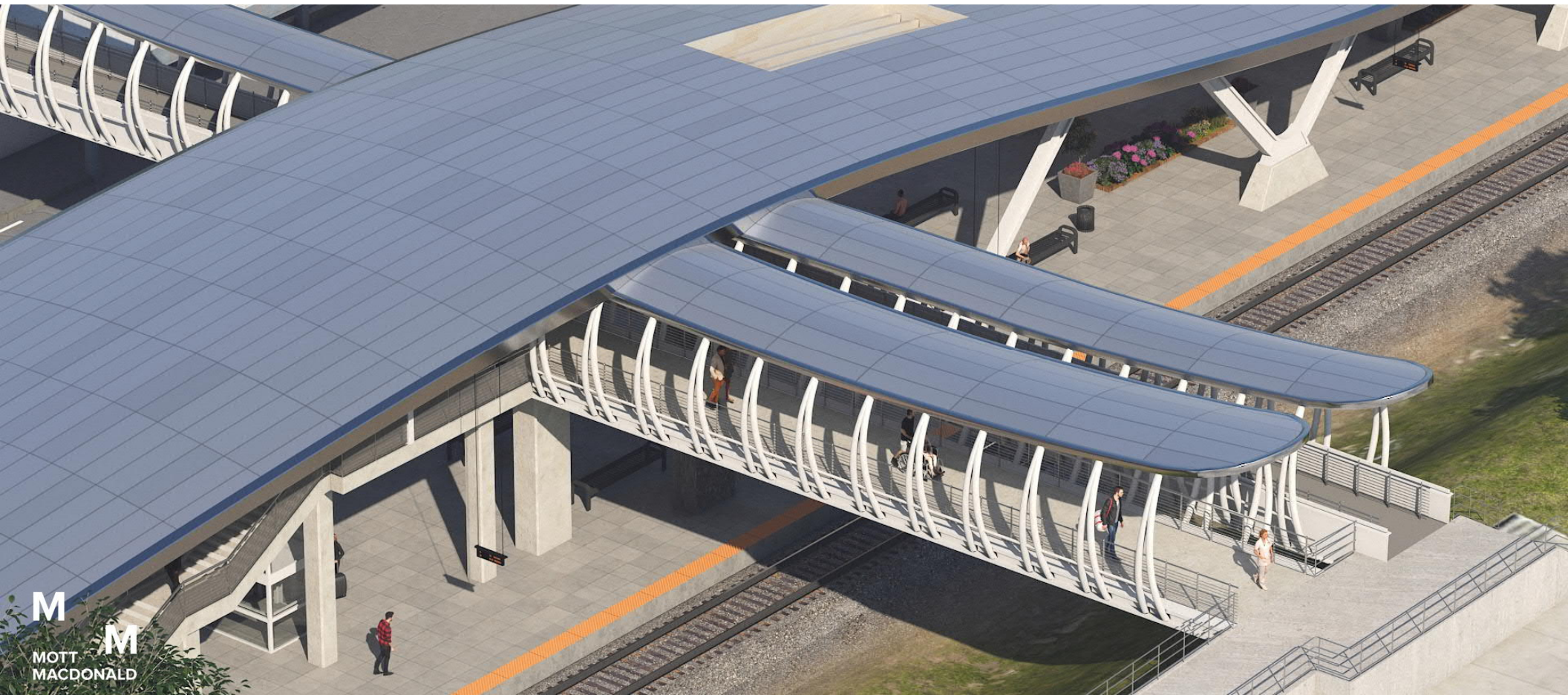
Station Rendering

Signature – Caterpillar Option Birdseye View (conceptual design)



Station Rendering

Signature – Caterpillar Option Pedestrian Bridge View (conceptual design)



Station Rendering

Signature – Butterfly Option Platform View (conceptual design)



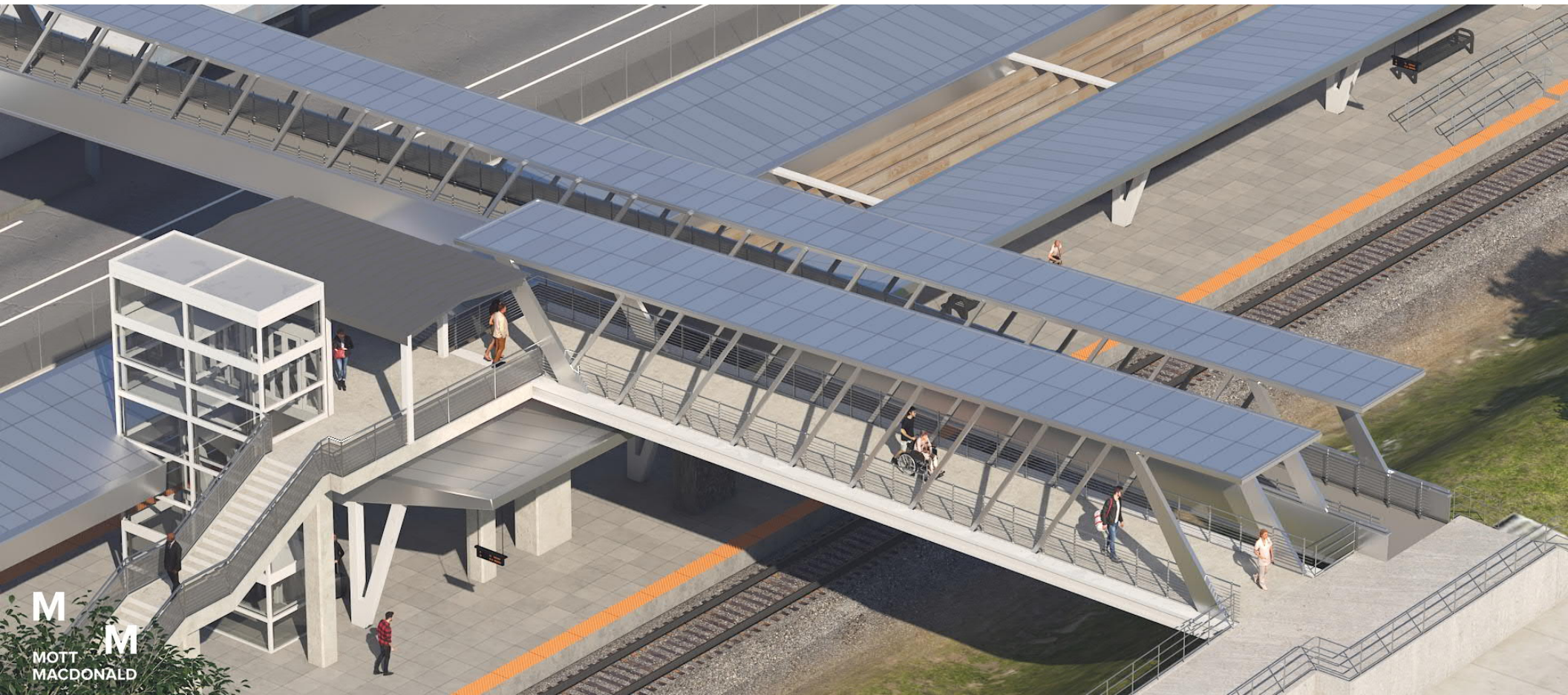
Station Rendering

Signature – Butterfly Option Birdseye View (conceptual design)



Station Rendering

Signature – Butterfly Option Pedestrian Bridge View (conceptual design)



4. Station Feasibility

Ridership potential and project benefits

- Approximately 6,700 (per day) existing middle-long distance trips going to and from the study area could be potentially served by Metrolink service with the new station
- The potential travel market for the new station will continue to grow, especially if all the redevelopment projects are implemented
- In 2045, The new Metrolink Station is estimated to attract nearly 250,000 boardings per year, among which 87,000 will be new Metrolink riders, saving the travelers approximately 29,000 hours of travel time.



4. Station Feasibility

Additional First/Last Mile Improvements

- The First/Last Mile is the start/end of a passenger's trip to and from the rail/transit station.
- Potential first/last mile improvements:
 - ✓ USC and Wellness Center Shuttle improvements
 - ✓ New class III bicycle routes on State Street and Chicago Street/Cummings Street, between Marengo Street and Zonal Avenue
 - ✓ Improved wayfinding to facilitate pedestrian access across the HSC



5. Project Funding and Next Steps

- The construction of a new Metrolink Station on the San Bernardino Line is **currently not funded (\$65M-\$110M)**
- The project team will **research potential funding sources** such as federal and state grants
- Environmental clearance and advanced conceptual engineering (30%)





Thank you



Questions?

¿Preguntas?

Partner
Announcements
Anuncios de socios

Next Meeting:
Friday, August 5, 2022

Próxima reunión: viernes
5 de agosto 2022

www.hicpla.org

HHEALTH
IINNOVATION
CCOMMUNITY
PPARTNERSHIP