

HEALTH INNOVATION COMMUNITY PARTNERSHIP

Monthly Meeting
June 3, 2022

Reunión mensual
3 de junio de 2022



Agenda

8:45	Meeting Overview, Guiding Principles and Announcement	Resumen de la reunión, principios rectores y anuncio
8:50	LAC+USC Medical Center Update	Actualización del Centro Médico LAC + USC
9:00	Civic Arts Conversations: Lorenzo Hurtado Segovia	Conversaciones de artes cívicas: Lorenzo Hurtado Segovia
9:20	Restorative Care Village Update	Actualización de Restorative Care Village
9:50	General Hospital-West Campus Development Project Update	Actualización del Proyecto de Desarrollo del Campus Oeste del Hospital General
10:10	Homelessness in Our Community: Panel Discussion	Personas sin Hogar en Nuestra Comunidad: Panel de Discusión

Monthly Themes for June

Pride Month

Men's Health Month

Juneteenth

Father's Day

Fruit and Veg Month

Headache and

Migraine Month

PTSD Month



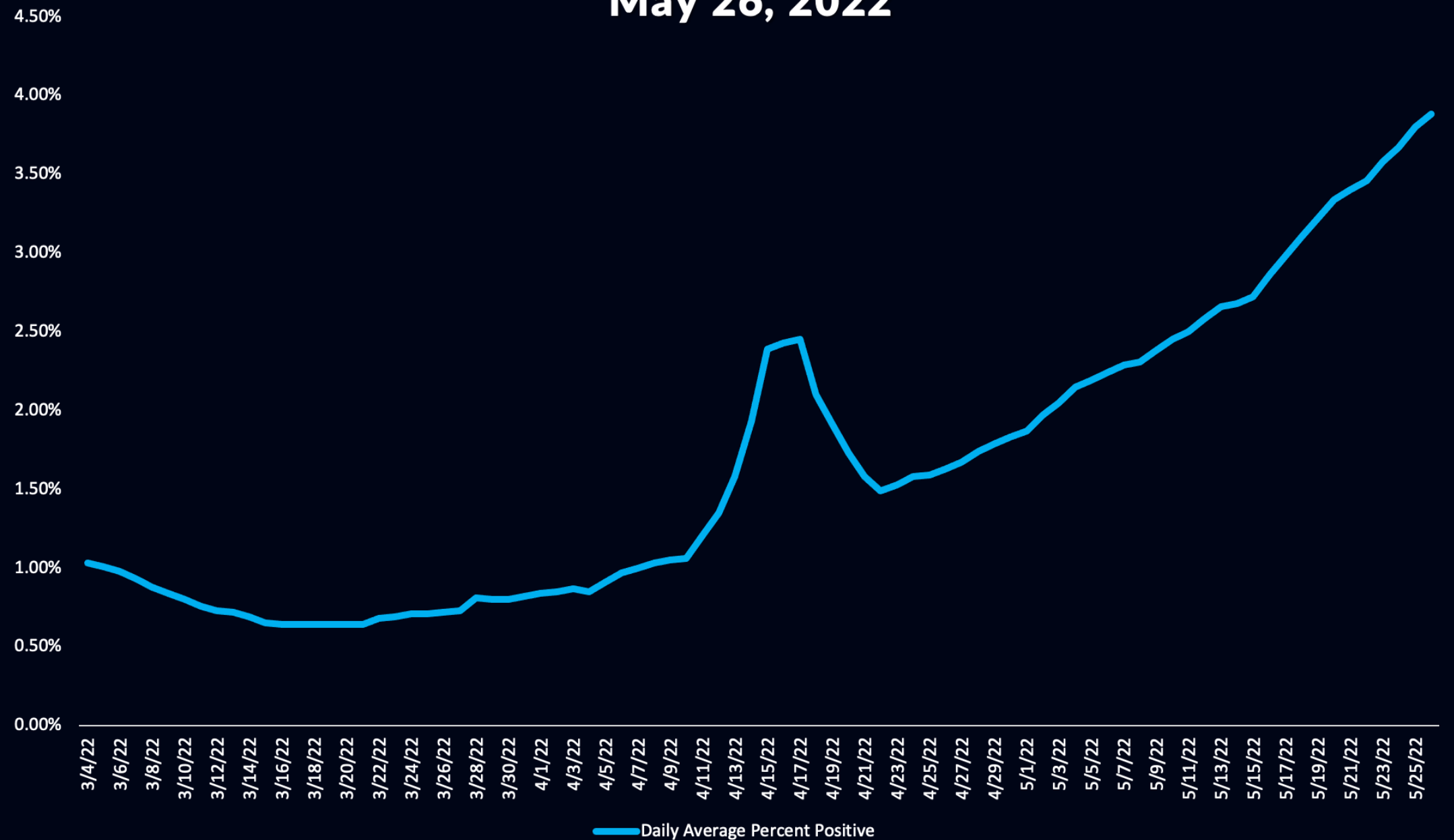
COVID-19 Update

5,047

New Cases Reported (06/02)*

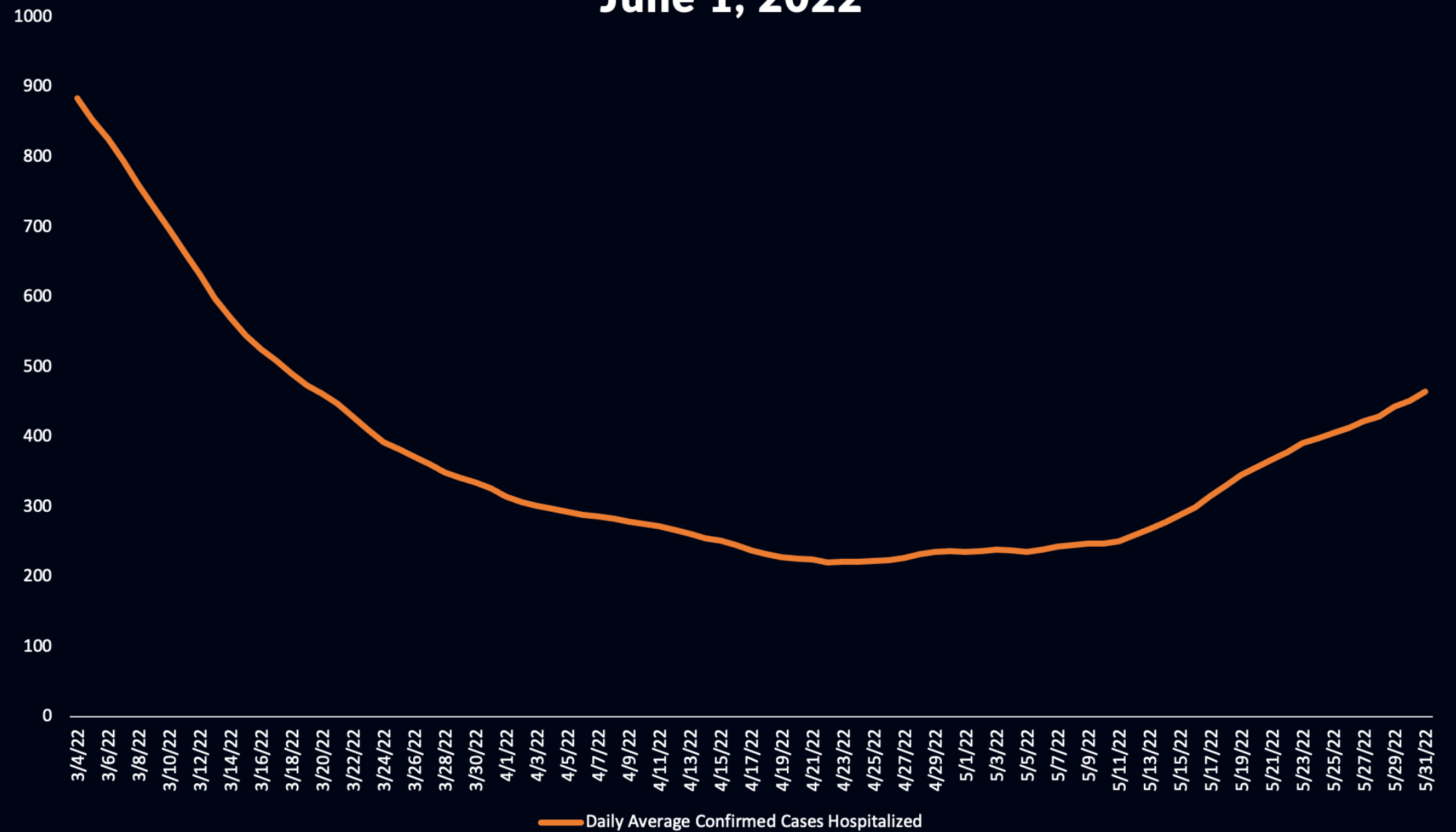
Positivity Rate – 7-day daily average: 7-Day Daily Average: 3.88%

Daily Reported Percent of COVID-19 Diagnostic Tests that are Positive, Past 7-day Average May 26, 2022



COVID-19 Update

Daily Number of Hospitalized COVID-19 Confirmed Patients, Past 7-day Average June 1, 2022



COVID-19 Update

LAC DPH Health
Update:

Isolation and
Quarantine for
General Public

June 1, 2022

- The LA County Health Officer [Isolation and Quarantine Orders](#) for the general public were recently updated
- **A person infected with COVID-19 (case) *must* have a negative COVID-19 test collected on or after Day 5 to end isolation on Day 6-Day 10.** If the case does not test or if their test remains positive, they are required to continue to isolate at least through Day 10.
- **Close contacts in the general public do not need to quarantine as long as they remain asymptomatic, get tested between Day 3-Day 5, and wear a mask through Day 10 of their last exposure with the infectious case.**
- **A close contact in the general public is any person who shared the same indoor airspace with someone with COVID-19 for a total of 15 minutes or more over a 24-hour period while the case was infectious.**

HICP Guiding Principles

(from our Vision
and Mission
document)

1. All participants agree to basic principles prioritizing equity, community resilience, and health in all programs and projects.
2. All participants agree to approach issues with an open mind, be willing to engage in dialogue, and commit to thinking boldly about solutions.
3. Participants will state views and ask genuine questions.
4. Participants will seek to avoid monologues and arguments; move to conversations where participants are curious and seek to understand various points of view.
5. Participants will explain reasoning and intent; share how we reach our conclusions so that others can understand our divergent reasoning.
6. Participants will attack the problem and not the person, organization, or institution.
7. Participants will define key terms so that we can attain a shared understanding.
8. Participants will share all relevant information.
9. Participants will always arrive prepared for the meeting.
10. During meetings, only one person speaks at a time; we will not engage in sidebar conversations.
11. Participants will work to develop a comprehensive, common set of information with which to solve problems and make decisions.
12. Participants will jointly design next steps.

LAC+USC

LAC+USC Medical Center
Update

**Actualizaciones del Centro Medico de
LAC+ USC**

Jorge Orozco, Chief Executive Officer



LAC+USC
MEDICAL CENTER

LAC+USC Medical Center Updates

Health Innovation Community Partnership (HICP) Meeting
June 3, 2022



Give the Gift of Life! LAC+USC will host monthly blood drives all 2022!

- June 7th Blood Drive
- Appointments are available from now until December.
- To Register, scan the QR code!



In partnership with:



BLOOD DRIVE

LAC+USC Medical Center Courtyard
11:00 am to 4:00 pm



Bloodmobile parked in Center Courtyard
2051 Marengo Street, Los Angeles 90033

We strongly encourage appointments
MYSCBB.org/schedule(844)380-5220

Safety measures in place. Photo ID required. Arrive hydrated

Give the Gift of Life

2022 Blood Drive Dates

- Thursday, April 28th, 2022
- Tuesday, May 10th, 2022
- Tuesday, June 7th, 2022
- Tuesday, July 19th, 2022
- Tuesday, August 9th, 2022
- Tuesday, September 6th, 2022
- Thursday, October 6th, 2022
- Tuesday, November 22nd, 2022
- Wednesday, December 21st, 2022

Celebrating PRIDE Month

Throughout the month of June, we will be celebrating PRIDE

- LA Pride Parade – Sunday June 12th,
- Employee Engagement PRIDE Raffles
 - 1 Lucky winner will win pair of LA Pride in the Park tickets
 - June 11th
 - 1 Lucky winner will win a pair of LBGBTQ+ Movie Night at Hollywood Forever
 - June 25th
- JUNE PRIDE - Virtual Town Hall Live Q&A
 - June 22, 2022, from 12pm -1pm

Title: Gender Affirming Surgery Panel Discussion



The poster features the LAC+USC logo on the left and the word "PRIDE" in large, rainbow-colored letters on the right. Below the logo is the text "LAC+USC MEDICAL CENTER". The main text reads "March with us during the PRIDE Parade!" followed by a rainbow-colored box containing "Sunday, June 12th, 2022". Below this is a "Register Now!" button with a rainbow gradient and a "Click here to register" link. At the bottom, it states "Shuttle bus will be available to transport staff from LAC+USC to parade location." and includes a small disclaimer: "Thank you to our generous funders: LAC+USC Medical Center Foundation, Diversity & Inclusion Program (DIP), The David Project".

LAC+USC
MEDICAL CENTER

PRIDE

March with us during the PRIDE Parade!

Sunday, June 12th, 2022

Register Now!

[Click here to register](#)

Shuttle bus will be available to transport staff from LAC+USC to parade location.

Thank you to our generous funders:
LAC+USC Medical Center Foundation, Diversity & Inclusion Program (DIP), The David Project



LAC+USC
MEDICAL CENTER

1st National Holiday: Juneteenth

Juneteenth

Celebration & Health Fair

Join us in celebrating the first National Juneteenth Holiday! Featuring Food, Live Entertainment, Resources, and more!

Date:

Friday, June 17th, 2022

Time:

11:00 am – 4:00 pm

Location:

LAC+USC Breezeway





LAC+USC
MEDICAL CENTER

EDIA Listening Sessions

From May 23 - June 3, 2022, Workforce Listening Sessions will be held as we continue our EDIA initiative.

EDIA INITIATIVE Equity Diversity Inclusion Antiracism

Health Services
LOS ANGELES COUNTY

WORKFORCE LISTENING SESSIONS

MAY 23 - JUNE 3

This is your final chance to give feedback on the EDIA strategic plan. Join us!

SIGN UP NOW!


[TINYURL.COM/EDIALISTENS](https://tinyurl.com/EDIALISTENS)





LAC+USC
MEDICAL CENTER

COVID-19 Campus Dashboard



COVID-19 DASHBOARD

MAY 31, 2022

PATIENT CASES IN HOUSE	LAC+USC TOTAL	ICU ONLY LAC+USC TOTAL	DHS
Positive Cases	16	3	37
Patients Under Investigation (PUI's)	0	0	0

STAFF COVID TESTING

LAC+USC Staff <u>Tested</u> for COVID ¹	5513
LAC+USC Staff Confirmed COVID <u>Positive</u> ¹	2704

*This data represents results received from tests of workforce members conducted by DHS Employee Health Services (EHS), as well as any test result submitted to EHS by workforce members, from a personal provider or other testing entity. Because workforce members may be tested outside of EHS, DHS may not be in receipt of all test results. This data is updated weekly as new test results are received and includes employees, contractors, volunteers and students. Expanded testing to any symptomatic workforce member began on April 13, 2020 which will show an increase of cases reported.

5-Day Remdesivir Courses Available

Remdesivir Supply Level G

5-Day Remdesivir Courses Available*
 GREEN – Greater than 21-days across DHS
 YELLOW – Greater than 7-days remaining across DHS, but less than 21-days
 RED – Less than 7-days remaining across DHS
 *Data assumes 10% increase from current baseline

PATIENT CASES IN LOS ANGELES COUNTY (Cumulative Total)

CONFIRMED	DEATHS
2,974,197	32,129

COVID+ PATIENTS THAT RECEIVED INPATIENT CARE AT LAC+USC
Cumulative Total 5912

DAILY CENSUS (AS OF 12:00 AM)

457


ED VISITS (YESTERDAY, Extracted)

373


COVID+ INPATIENTS DISCHARGED *
*Cumulative Total, Excluding Deaths

5173

BLOOD SUPPLY



MEDICATION SUPPLY



PPE INVENTORY

N95 Masks (Small)	G
N95 Masks (Regular)	G
Surgical Masks	G
Face Shields and Goggles	G

Inventory Days on Hand (DOH)*
 RED – 8 days or Less
 YELLOW – 9 to 29 days
 GREEN – 30 or more days
 *Calculated & adjusted based on daily utilization rates & trajectories



Health &
Wellness

Salud y
bienestar

Civic Arts Conversations with Lorenzo
Hurtado Segovia

**Conversaciones de artes cívicas con
Lorenzo Hurtado Segovia**

*Iris Regn, LA County Department of Arts and Culture
and*

Lorenzo Hurtado Segovia

Health &
Wellness

Salud y
bienestar

Restorative Care Village Update

Actualización de Restorative Care Village

*Dr. Brad Spellberg and Dr. Rebecca Trotzky-Sirr,
LAC+USC Medical Center*

Shalonda Williams, JWCH Institute

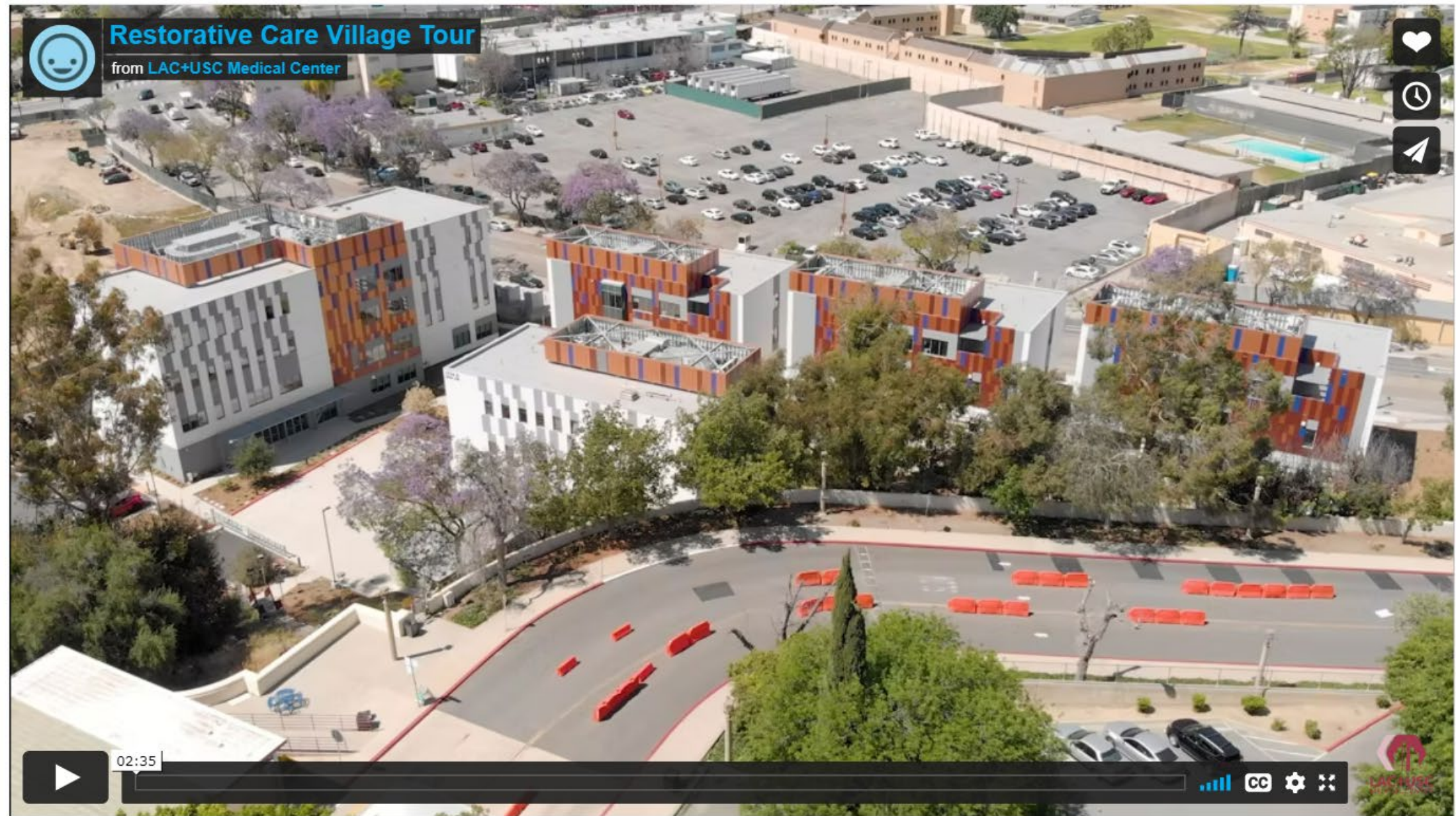
Mariela Gorosito, Telecare (tentative)

LAC+USC
Restorative
Care Village





LAC+USC Restorative Care Village



Restorative Care Village Tour

Panel
Conversation
and
Q&A



*Dr. Brad Spellberg and Dr. Rebecca Trotzky-Sirr,
LAC+USC Medical Center
Shalonda Williams, JWCH Institute
Steve Albrecht, Stars Behavioral Health Group*

Economic
Opportunity

Oportunidad
económica

Restorative Care Village - LAC+USC		
JWCH	Position	Need
	<u>LCSW</u>	2
	<u>LVN</u>	10
	<u>Housekeeping</u>	
	<u>Care Team Specialist</u>	5
	<u>Medical Assistant</u>	
	<u>Client Aide</u>	3
	<u>Food Service Worker</u>	3
	<u>CNA</u>	15
	<u>RN</u>	6
STARS Behavioral	Position	Need
	<u>Recovery Counselor</u>	8
	<u>LVN</u>	
	<u>RN</u>	
	<u>Mental Health Specialist 1 and 2</u>	
	<u>Youth Counselor 1, 2, 3 and 4</u>	
Telecare	Position	Need
	<u>Peer Recovery Coach II</u>	28
	<u>LVN</u>	5

NOW HIRING LOCAL CANDIDATES NO EXPERIENCE NEEDED

Join Our Team!

Wesley Health Center is looking for a positive, engaging, and enthusiastic individuals to join the Wesley Health Centers LAC/USC Recuperative Care Program.

We offer competitive benefits as an important part of your total compensation package. We understand that your coverage options can influence your employment decision. Wesley Health Centers offers a full range of benefits, including:

- Medical, Dental and Vision Insurance
- 401(K)
- Vacation and Sick Time accrual
- 11 Paid Holidays
- Credit Union
- Life & Disability Insurance
- Career Advancement Opportunities

Wesley Health Centers is committed to providing our staff with every opportunity to reach their ultimate potential. Join our team and help fulfill our mission of providing quality health care for all.

FOR MORE INFORMATION CONTACT:
Nestor Recinos, Human Resources Associate
(323) 201-4516 ext. 3117

Or apply online at: www.jwchinstitute.org



Wesley Health Centers, JWCH Institute is an equal opportunity employer.

Positions Available

Care Team Specialist
Starting salary:
\$31k/year

Food Service Worker
Starting Salary:
\$31k/year

Certified Nurse Assistant
Starting Salary:
\$35k/year

Housekeeper
Starting Salary:
\$31k/year

Client Aide
Starting Salary:
\$31k/year



Career Opportunity | Peer Support

Make a Difference. Reap the Rewards.

In partnership with LA County, Telecare will be the provider of three new **Crisis Residential Treatment Centers** located in Sylmar, CA, Downey, CA, and Los Angeles, CA. All programs will have program capacity for 16 adults. These programs will offer access to voluntary mental health crisis services and aim to provide a community-based, lower-level-of-care alternative to emergency rooms, acute care hospitals, and jails.

Calling all Peers

We are looking for **Certified Peer Support Specialists**—one at each program—plus on-call staff. The role of the Family Peer Support Specialist is to engage, inspire, and encourage participants and their families, families of choice, and natural supports to actively promote each participant's recovery plan. Additionally, the Family Peer Support Specialist provides information, education, and resources to the participant's support system so they can be better prepared to bring out the best in their loved one.

Shifts are typically from 7 am to 3:30 pm or 3pm to 11 pm.

Qualifications

Required:

- High School Diploma or GED required
- Certified Peer Specialist and/or completed Peer Support Training
- One (1) year or part-time equivalent of experience supporting members served with behavioral health challenges
- Experience as a beneficiary of the public Behavioral Health system of care
- Successful completion of Peer Support Training or Peer Employment Training.
- Must be at least 18 years of age

Telecare Corporation | Respect. Recovery. Results. | www.telecarecorp.com



JOIN ONE OF
CALIFORNIA'S
LARGEST BEHAVIORAL
HEALTH PROVIDERS

STAR VIEW BEHAVIORAL HEALTH AND STAR VIEW ADOLESCENT CENTER ARE SEEKING CANDIDATES

Why are we certified as an official **Great Place to Work™**?

- Employee-owned company founded in 1988
- Generous employee benefits
- Large company with 2,000+ employees statewide—room for growth
- Strong training programs
- Designated as a Great Place to Work™ five years in a row by an independent company

For questions or more info, email **Kiana Jones** at kijones@starsinc.com

FEATURED POSITIONS

- Clinicians/Therapists (English or bilingual Spanish)
Locations throughout Los Angeles County
- RNs, LVNs, and LPTs (FT, PT and on-call)
Long Beach, CA or City of Industry, CA
- Youth Counselors
Torrance, CA

SCAN TO
VIEW JOB
DETAILS



or visit: starsinc.com/careers



Partnering with People for Positive Change

General Hospital and West Campus Feasibility Study Update

Actualización del estudio de factibilidad del hospital general y west campus

Heather Hays, LAC+USC Medical Center Foundation, Inc.

*Doug Cohen, LA County Department of Workforce
Development, Aging and Community Services*

LAC+USC MEDICAL CENTER GENERAL HOSPITAL and WEST CAMPUS FEASIBILITY STUDY

April 2022

Health Innovation Community Partnership
May Meeting
May 6, 2022



Los Angeles County Supervisor

HILDA L. SOLIS

First District • Chair

County of Los Angeles
Chief Executive Office

After three years of community engagement and technical analysis, the Final Feasibility Study is available!!

Visit our Website to read or download the Study:
[hicpla.org/general-hospital-feasibility-study](https://www.hicpla.org/general-hospital-feasibility-study)



LAC+USC Medical Center General Hospital & West Campus Feasibility Study

"When I look at this iconic structure, I see much more than an architectural gem: I envision a thriving community facility proactively helping people suffering from homelessness and other disadvantages get back on their feet."

– Supervisor Hilda L. Solis, First District, Los Angeles County

After three years of community engagement and technical analysis, the Final Feasibility Study is available!!

The LAC+USC Medical Center General Hospital and West Campus Feasibility Study report was submitted to the Board of Supervisors on April 29, 2022.

Click here to download your copy:

CEO Cover Letter

Study in English

Estudio en Español

Después de tres años de participación comunitaria y análisis técnico, ¡el reporte Final del Estudio de Factibilidad está disponible!

Visite nuestro Sitio Web para leer o descargar el Estudio:
<https://www.hicpla.org/es/general-hospital-feasibility-study>



LAC+USC Medical Center Hospital General y Campus Oeste Estudio de factibilidad

"Cuando observo esta estructura icónica, veo mucho más que una joya arquitectónica: imagino una instalación comunitaria próspera que ayude de manera proactiva a las personas que no tienen hogar y otras desventajas a recuperarse".

– Supervisora Hilda L. Solis, Primer Distrito, Condado de Los Ángeles

Después de tres años de participación comunitaria y análisis técnico, ¡el reporte Final del Estudio de Factibilidad está en vivo!

El reporte del Estudio de Factibilidad del LAC+USC Medical Center Hospital General y Campus Oeste fue presentado a la Junta de Supervisores el día de 29 de abril de 2022.

Haga click aquí para descargar su copia:

CEO Cover Letter

Estudio en Inglés

Estudio en Español

Leave Feedback on the Study Website

<https://www.hicpla.org/general-hospital-feasibility-study>

We invite your feedback on the Study.

Name

Email

Phone

Affiliation *

I want to subscribe to the newsletter and receive updates.

Key interest areas (Check all that apply):

- Affordable Housing
- Jobs
- Training/School
- Local Business Growth
- Health Services
- Homelessness
- Other

Question/Comment

Send Feedback

Deje sus Comentarios en el Sitio Web del Estudio

<https://www.hicpla.org/es/general-hospital-feasibility-study>

Los/as invitamos a compartir sus comentarios sobre el Estudio

Nombre

Correo electrónico

Teléfono

Afiliación *

Quiero suscribirme a la newsletter y recibir actualizaciones.

Key interest areas (Check all that apply):

- Vivienda asequible
- Trabajos
- Formación/Escuelas
- Crecimiento de negocios locales
- Servicios de salud
- Falta de vivienda
- Otro

Pregunta/Comentario

Enviar Comentarios

Final Community at Large Meeting #5

HICP	General Hospital Feasibility Study	Restorative Care Village	Women's & Children's Hospital	Child Care Center	EDIA Initiative Resources
------	------------------------------------	--------------------------	-------------------------------	-------------------	---------------------------

- **Thursday, June 2nd, 2022, 5:00 PM - 7:00 PM**
- **Via Zoom and In-person Livestream at LAC+USC**
- **131 attendees via Zoom | 10 attendees in person**
- **Meeting materials will be posted to the project website in about 1-week**

Resource Library

Digital Documents

[11.13.18 General Hospital Feasibility Study Board Motion](#)

[Affordable Housing Fact Sheet in English](#)

[Hoja Informativa sobre Vivienda Asequible en Español](#)

[Frequently Asked Questions about the Study in English](#)

[Preguntas Frecuentes sobre el Estudio in Español](#)

Community Meetings

Community Meeting 5 (Virtual)

June 2, 2022, 5:00PM - 7:00PM | Via Zoom

Flyers:

[English](#) | [Spanish](#)

The final Community At-Large Meeting for the General Hospital and West Campus Feasibility Study to present the Study to the public will be held on Thursday, June 2nd from 5:00 - 7:00 PM via Zoom.

All are welcome - Spanish interpretation will be provided!

Community Meeting 4 (Virtual)

February 17, 2022 | Via Zoom

Flyers and Handouts:

[2/17 Meeting Announcement](#)
[Meeting Questions and Answers in English](#)
[Reunión de Preguntas y Respuestas en Español](#)

Presentation:

[English & Spanish](#)

Videos:

[Meeting Video in English](#)
[Video de la Reunión en Español](#)
[Opening Remarks from Supervisor Hilda L. Solis](#)

Funding Announcement!!

**Secured State Funding for General
Hospital Reuse**

Office of Supervisor Hilda L. Solis

Request for Proposal (RFP) Update

*Doug Cohen, LA County Department of Workforce
Development, Aging and Community Services*

What is a Request for Proposals (RFP)?

- An RFP is a document that details the project requirements for the developers
- The RFP describes the project size and the expectations from the County, the Community, and other stakeholders.
- This includes minimum required programming for **affordable housing** and **retail**; **expected timeline(s)** for the project delivery; and the **guidelines** upon which the Bidder's proposal will be evaluated.
- The RFP goal is to attract multiple qualified developers to submit their proposals for the project.
- The County will assess each proposal for:
 - The developer's **capacity** to successfully deliver their proposed development
 - **Creative solutions** that maximize the project requirements and desires as described in the RFP
 - **Financial qualifications** of the developer
 - **Maximum valuation** of public assets
- The County will ultimately select the preferred developer and contract for Developer Services

¿Qué es una Solicitud de Propuestas (RFP)?

- *El RFP es un documento que detalla los requisitos del proyecto para los desarrolladores.*
- *El RFP describe el tamaño del proyecto y las expectativas del Condado, la Comunidad y las partes interesadas*
- *Esto incluye la programación mínima requerida para **viviendas asequibles** y **tiendas minoristas**; **cronograma(s)** esperado(s) para la entrega del proyecto; y los **lineamientos** sobre los cuales se evaluará la propuesta del Licitante.*
- *La meta del RFP es atraer a varios desarrolladores calificados para que presenten sus propuestas para el proyecto.*
- *El Condado evaluará propuestas según:*
 - *La **capacidad** del desarrollador para entregar el desarrollo propuesto*
 - ***Soluciones creativas** que maximizan los requisitos y deseos como se describe en la RFP*
 - ***Calificaciones financieras** del desarrollador*
 - ***Valuación máxima** de los bienes públicos*
- *El Condado finalmente seleccionará al desarrollador preferido y contratará los Servicios del Desarrollador.*

Request for Proposal (RFP) Timeline

Cronograma de Solicitud de Propuestas (RFP, por sus siglas en inglés)



Community Participation in RFP Process

How will community input be included to shape the RFP and future phases?

- We are exploring roles for the Health Innovation Community Partnership (HICP) to participate in the request for proposals (RFP) process as well as future phases

What are the proposed roles for community guidance in the RFP Process?

- Creation of a subcommittee to help review developers' proposed Community Outreach and Community Benefits Plans

How can the public stay connected to the RFP Process?

- Join us at monthly HICP meetings to receive regular updates

Participación Comunitaria en el Proceso del RFP

¿Cómo se incluirán los aportes de la comunidad para dar forma al RFP y las fases futuras?

- *Estamos explorando roles para que el Health Innovation Community Partnership (HICP) participe en el proceso de solicitud de propuestas (RFP, por sus siglas en inglés), así como en las fases futuras.*

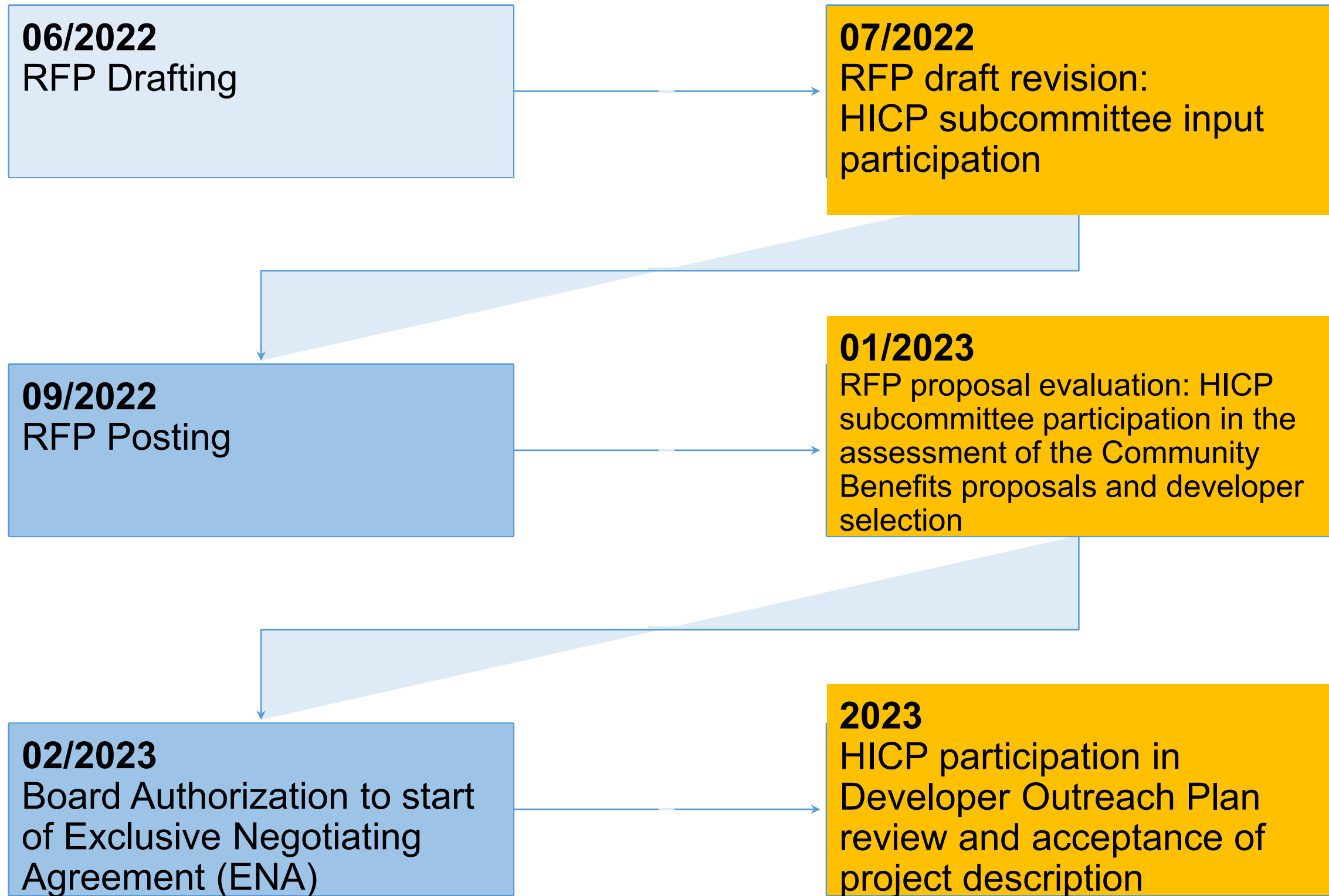
¿Cuáles son los roles propuestos para la orientación comunitaria en el proceso de RFP?

- *Creación de un subcomité para ayudar a revisar los Planes de Divulgación Comunitaria y Beneficios Comunitarios propuestos por los desarrolladores*

¿Cómo puede el público mantenerse conectado con el proceso RFP?

- *Únase a nosotros en las reuniones mensuales de HICP para recibir actualizaciones periódicas*

RFP Roadmap and Timeline



HICP Subcommittee Opportunity for RFP Process

In June 2022, HICP will open a self-nomination process for members to apply to serve on the HICP Subcommittee for the General Hospital and West Campus Development RFP. The opportunity will be emailed to the HICP distribution list in early June.

The role of committee members is likely to be fairly intensive, and will require commitment of significant time and expertise to review the Community Benefits and Outreach Plan proposals submitted by developers. The size of the committee and individual roles (reviewer vs. alternate) will be influenced by the number of proposals received to ensure a reasonable workload for committee members.

Thank You!

For more information, please contact

Heather Hays

Heather@TheWellnessCenterLA.org

or Sophia Wang

SWang@wdacs.lacounty.gov

Community
Stability

Estabilidad
Comunitaria

Homelessness in our Community: Panel
Conversation and Q&A

**Falta de vivienda en nuestra
comunidad: Panel de conversación y
preguntas y respuestas**

Monica Alcaraz, Exodus Recovery

Andrea Marchetti, Jovenes, Inc.

*Colleen Murphy, Associate Director for Unsheltered
Strategies, LAHSA*

Panel
Conversation
and
Q&A



*"...the pathway to
freedom begins
with you."*



*Monica Alcaraz, Exodus Recovery
Andrea Marchetti, Jovenes, Inc.
Colleen Murphy, LAHSA*



HEALTH
INNOVATION
COMMUNITY
PARTNERSHIP

Next Meeting:
Friday, June 3, 2022

Próxima reunión: viernes
8 de julio 2022

www.hicpla.org

HHEALTH
IINNOVATION
CCOMMUNITY
PPARTNERSHIP